

PanTher™ LS8E and LS8EQ Hand-Held Thermal Transfer Printers

The PanTher™ LS8E and LS8EQ Hand-Held Thermal Transfer Printers produce high-quality, industrial labels on a wide variety of label materials for electrical and network applications such as wire/cable, components, safety, and facility identification.

A partial cut feature provides the flexibility to create tear-apart labels for quicker installation. The printers use label cassettes that contain an integrated memory device for automatic formatting, recall of last legend used, and the number of labels remaining in the cassette. These fast-loading P1™ label cassettes include both label material and ribbon to make changing labels easy.

Part of the complete line of identification solutions from Panduit, the PanTher™ LS8E and LS8EQ Printers are compact, rugged, and easy to use on-site to meet the demanding requirements of electrical and network users, while delivering productivity gains throughout the physical infrastructure.



Key Features

Benefits

QWERTY keypad <small>PATENTED</small>	Innovative design delivers faster text entry and label design for enhanced productivity
Label cut-to-length functionality	Eliminates label waste and time associated with trimming labels
Cassettes with automatic label recognition	Label cassettes contain an integrated memory device for automatic formatting, recall of last legend used, and number of labels remaining in the cassette
Fast-loading label cassette	Contains both label material and ribbon to make changing labels easy
Unique cutter design allows full or partial label cutting	Flexibility to create individually cut labels or a strip of tear-apart labels for quicker installation
Market specific labeling tools	Simplify label creation for network components, panel building, and construction and maintenance
USB interface	Allows importing data, system upgrades, and printing labels from a wireless laptop or desktop computer

Label Types

Self-Laminating Labels
Turn-Tell® Labels
Marker Plates
Flag Labels
Die-Cut Heat Shrink Labels
Die-Cut Vinyl Cloth Labels
Die-Cut Nylon Cloth Labels
Die-Cut Component Labels

Label Types

Continuous Heat Shrink Labels
Continuous Vinyl Cloth Labels
Continuous Nylon Cloth Labels
Continuous Terminal Block Labels
Continuous Reflective Tapes
Continuous Tapes
Ultimate ID® Network Labels

PanTher™ LS8E and LS8EQ Ordering Information



LS8EQ



LS8E

Part Number	Part Description	Std. Pkg. Qty.
LS8EQ-KIT-ACS	Includes LS8EQ printer with QWERTY keypad, one cassette of S100X150VAC self-laminating labels, six AA alkaline batteries, LS8E-ACS, LS8-CASE, LS8-PCKIT, LS8-IB, LS8-WS, quick reference card, and operator's manual.	1
LS8EQ-KIT	Includes LS8EQ printer with QWERTY keypad, one cassette of S100X150VAC self-laminating labels, six AA alkaline batteries, LS8-CASE, LS8-PCKIT, LS8-IB, LS8-WS, quick reference card, and operator's manual.	1
LS8EQ	Includes LS8EQ printer with QWERTY keypad, one cassette of S100X150VAC self-laminating labels, six AA alkaline batteries, and quick reference card.	1
LS8E-KIT-ACS	Includes LS8E printer, one cassette of S100X150VAC self-laminating labels, six AA alkaline batteries, LS8E-ACS, LS8-CASE, LS8-PCKIT, LS8-IB, LS8-WS, quick reference card, and operator's manual.	1
LS8E-KIT	Includes LS8E printer, one cassette of S100X150VAC self-laminating labels, six AA alkaline batteries, LS8-CASE, LS8-PCKIT, LS8-IB, LS8-WS, quick reference card, and operator's manual.	1
LS8E	Includes LS8E printer, one cassette of S100X150VAC self-laminating labels, six AA alkaline batteries, and quick reference card.	1

Accessories for LS8E and LS8EQ printers

LS8E-ACS*	120 VAC power adapter for North America.	1
LS8-CASE	Rigid carrying case.	1
LS8-PCKIT	Includes USB cable and PC interface software for importing data, system upgrades, or printing from a wireless laptop or desktop computer.	1
LS8-IB	Protective impact bumper.	1
LS8-WS	Wrist strap.	1
LS8-CLN	Cleaning kit.	1

*Cannot be used to charge batteries. Other adapters available, replace S with A (Australia), C (China), E (Europe), and U (UK).

Self-Laminating Label Cassettes



- Fast loading P1™ Label Cassette includes both label material and ribbon to make changing labels easy
- Self-laminating adhesive labels for wire/cable identification include a colored print-on area and clear overlamine



Self-Laminating Vinyl (VA, VB, VD, VH, VI)

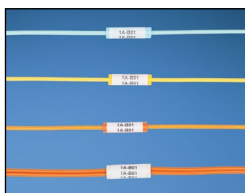


40°F to 150°F (-40°C to 66°C)

Part Number	Print-On Area color	Width		Length		Print-On Area Height		Min. Cable O.D.		Max. Cable O.D.		Wire/Cable Size Range	Labels Per Cassette	Std. Pkg. Qty.	Std. Ctn. Qty.
		In.	mm	In.	mm	In.	mm	In.	mm	In.	mm				
S050X075VAC	White	0.50	12.7	0.75	19.1	0.25	6.4	0.08	2.0	0.16	4.0	18 – 14 AWG	450	1	10
S050X125VAC	White	0.50	12.7	1.25	31.8	0.38	9.7	0.12	3.1	0.28	7.0	12 – 10 AWG	225	1	10
S050X150VAC	White	0.50	12.7	1.50	38.1	0.50	12.7	0.16	4.0	0.32	8.1	Cat. 5e/Cat. 6	200	1	10
S075X075VAC	White	0.75	19.1	0.75	19.1	0.25	6.4	0.08	2.0	0.16	4.0	18 – 14 AWG	350	1	10
S075X100VAC	White	0.75	19.1	1.00	25.4	0.38	9.7	0.12	3.1	0.16	4.0	12 – 10 AWG	275	1	10
S075X125VAC	White	0.75	19.1	1.25	31.8	0.38	9.7	0.12	3.1	0.28	7.0	12 – 10 AWG	225	1	10
S075X150VAC	White	0.75	19.1	1.50	38.1	0.50	12.7	0.16	4.0	0.32	8.1	Cat. 5e/Cat. 6	200	1	10
S100X075VAC	White	1.00	25.4	0.75	19.1	0.25	6.4	0.08	2.0	0.16	4.0	18 – 14 AWG	350	1	10
S100X125VAC	White	1.00	25.4	1.25	31.8	0.38	9.7	0.12	3.1	0.28	7.0	12 – 10 AWG	225	1	10
S100X150VAC	White	1.00	25.4	1.50	38.1	0.50	12.7	0.16	4.0	0.32	8.1	Cat. 5e/Cat. 6	200	1	10
S100X150VBC	TIA Blue	1.00	25.4	1.50	38.1	0.50	12.7	0.16	4.0	0.32	8.1	Cat. 5e/Cat. 6	200	1	10
S100X150VDC	TIA Green	1.00	25.4	1.50	38.1	0.50	12.7	0.16	4.0	0.32	8.1	Cat. 5e/Cat. 6	200	1	10
S100X150VHC	TIA Red	1.00	25.4	1.50	38.1	0.50	12.7	0.16	4.0	0.32	8.1	Cat. 5e/Cat. 6	200	1	10
S100X150VIC	TIA Yellow	1.00	25.4	1.50	38.1	0.50	12.7	0.16	4.0	0.32	8.1	Cat. 5e/Cat. 6	200	1	10
S100X225VAC	White	1.00	25.4	2.25	57.2	0.75	19.1	0.24	6.1	0.48	12.2	8 – 4 AWG	125	1	10
S100X225VBC	TIA Blue	1.00	25.4	2.25	57.2	0.75	19.1	0.24	6.1	0.48	12.2	8 – 4 AWG	125	1	10
S100X225VDC	TIA Green	1.00	25.4	2.25	57.2	0.75	19.1	0.24	6.1	0.48	12.2	8 – 4 AWG	125	1	10
S100X225VHC	TIA Red	1.00	25.4	2.25	57.2	0.75	19.1	0.24	6.1	0.48	12.2	8 – 4 AWG	125	1	10
S100X225VIC	TIA Yellow	1.00	25.4	2.25	57.2	0.75	19.1	0.24	6.1	0.48	12.2	8 – 4 AWG	125	1	10
S100X400VAC	White	1.00	25.4	4.00	101.6	1.00	25.4	0.32	8.1	0.95	24.3	2 – 1 AWG	75	1	10
S100X650VAC	White	1.00	25.4	6.50	165.1	1.50	38.1	0.48	12.2	1.59	40.4	1/0-250 MCM	50	1	10

Order number of cassettes required.

LabelCore™ Fiber Optic Cable Identification System



- Provides a larger labeling surface on small fiber cables and allows legends to be clearly seen
- Sleeve is made of flexible PVC material
- Locate sleeve on straight section of cable at least 2 inches from fiber boot

Part Number	Part Description	Std. Pkg. Qty.	Std. Ctn. Qty.
NWSLC-2Y-AQ	Aqua, cable identification sleeve for 2mm simplex cable, 1 inch long.	100	1000
NWSLC-2Y	Yellow, cable identification sleeve for 2mm simplex cable, 1 inch long.	100	1000
NWSLC-3Y	Orange, cable identification sleeve for 3mm simplex cable, 1 inch long.	100	1000
NWSLC-7Y	White, cable identification sleeve for 3mm duplex fiber cable, 1 inch long.	100	1000

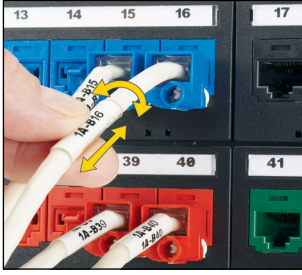
Order number of sleeves required.

Self-Laminating Label Cassettes for Use with LabelCore™ Fiber Optic Cable Identification System

Part Number	Part Description	Width		Length		Print-On Area Height		Min. Cable O.D.		Max. Wire O.D.		Std. Pkg. Qty.	Std. Ctn. Qty.
		In.	mm	In.	mm	In.	mm	In.	mm	In.	mm		
S100X160VAC	White print-on, self-laminating vinyl label 175/cassette. For use with NWSLC-2Y, NWSLC-3Y, and NWSLC-2Y-AQ	1.00	25.4	1.60	40.6	0.80	20.3	0.25	6.4	0.25	6.4	1	10
S100X220VAC	White print-on, self-laminating vinyl label, 125/cassette. For use with NWSLC-7Y.	1.00	25.4	2.20	55.9	1.10	27.9	0.35	8.9	0.35	8.9	1	10

Order number of cassettes required.

Turn-Tell® Label Cassettes



- Fast-loading P1™ Label Cassettes includes both label material and ribbon to make changing labels easy
- Innovative label design allows labels to rotate for visibility from any angle, and for repositioning on the wire/cable to align legends and improve aesthetics
- Labels can be easily installed on existing terminated wires and assemblies without disconnecting the wires/cables



Polymer Film (V1, V2, V3, V7, V8)



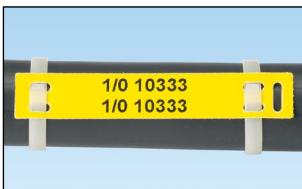
-40°F to 200°F (-40°C to 93°C)

Part Number	Part Description	Color	Width		Length		Print-On Area Height		Min. Cable O.D.		Max. Wire O.D.		Std. Pkg. Qty.	Std. Ctn. Qty.
			In.	mm	In.	mm	In.	mm	In.	mm	In.	mm		
R100X075V1C	White print-on area, 18 – 14 AWG wire/cable, 150/cassette.	White	1.00	25.4	0.75	19.1	0.25	6.4	0.12	3.1	0.16	4.1	1	10
R100X125V1C	White print-on area, 12 – 10 AWG wire/cable, Cat. 3 UTP cable, 100/cassette.	White	1.00	25.4	1.25	31.8	0.38	9.7	0.16	4.1	0.22	5.6	1	10
R100X150V1C	White print-on area, 10 – 6 AWG wire/cable, Cat. 5e/6/6A UTP and Cat. 5e FTP cable, 100/cassette.	White	1.00	25.4	1.50	38.1	0.50	12.7	0.22	5.6	0.28	7.1	1	10
R100X150V2C	Blue print-on area, 10 – 6 AWG wire/cable, Cat. 5e/6/6A UTP and Cat. 5e FTP cable, 100/cassette.	TIA Blue	1.00	25.4	1.50	38.1	0.50	12.7	0.22	5.6	0.28	7.1	1	10
R100X150V3C	Green print-on area, 10 – 6 AWG wire/cable, Cat. 5e/6/6A UTP and Cat. 5e FTP cable, 100/cassette.	TIA Green	1.00	25.4	1.50	38.1	0.50	12.7	0.22	5.6	0.28	7.1	1	10
R100X150V7C	Red print-on area, 10 – 6 AWG wire/cable, Cat. 5e/6/6A UTP and Cat. 5e FTP cable, 100/cassette.	TIA Red	1.00	25.4	1.50	38.1	0.50	12.7	0.22	5.6	0.28	7.1	1	10
R100X150V8C	Yellow print-on area, 10 – 6 AWG wire/cable, Cat. 5e/6/6A UTP and Cat. 5e FTP cable, 100/cassette.	TIA Yellow	1.00	25.4	1.50	38.1	0.50	12.7	0.22	5.6	0.28	7.1	1	10
R100X225V1C	White print-on area, 8 – 4 AWG wire/cable, Cat. 6 FTP and Cat. 6A cable, 75/cassette.	White	1.00	25.4	2.25	57.2	0.75	19.1	0.28	7.1	0.39	9.9	1	10
R100X225V2C	Blue print-on area, 8 – 4 AWG wire/cable, Cat. 6 FTP and Cat. 6A cable, 75/cassette.	TIA Blue	1.00	25.4	2.25	57.2	0.75	19.1	0.28	7.1	0.39	9.9	1	10
R100X225V3C	Green print-on area, 8 – 4 AWG wire/cable, Cat. 6 FTP and Cat. 6A cable, 75/cassette.	TIA Green	1.00	25.4	2.25	57.2	0.75	19.1	0.28	7.1	0.39	9.9	1	10
R100X225V7C	Red print-on area, 8 – 4 AWG wire/cable, Cat. 6 FTP and Cat. 6A cable, 75/cassette.	TIA Red	1.00	25.4	2.25	57.2	0.75	19.1	0.28	7.1	0.39	9.9	1	10
R100X225V8C	Yellow print-on area, 8 – 4 AWG wire/cable, Cat. 6 FTP and Cat. 6A cable, 75/cassette.	TIA Yellow	1.00	25.4	2.25	57.2	0.75	19.1	0.28	7.1	0.39	9.9	1	10

Order number of cassettes required.

Marker Plate Label Cassettes

- Fast-loading P1™ Label Cassette includes both label material and ribbon to make changing labels easy
- Marker plates are designed for use on larger diameter wire/cables and may be applied after all terminations are complete
- Meets requirements for MIL-STD-202F, Notice 12 Method 215J



Polyester/Polyolefin (Y6, Y7)



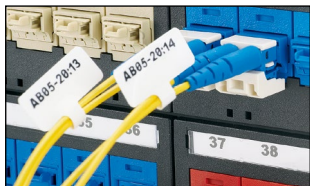
-58°F to 221°F (-50°C to 105°C)

Part Number	Color	Width		Length		Print-On Area Width		Recommended Cable Tie		Labels Per Cassette	Std. Pkg. Qty.	Std. Ctn. Qty.
		In.	mm	In.	mm	In.	mm	Vertical	Horizontal			
M300X050Y6C	Yellow	3.00	76.2	0.50	12.7	1.80	45.7	PLT2.5I-C	PLT2.5I-C	50	1	10
M300X050Y7C	White	3.00	76.2	0.50	12.7	1.80	45.7	PLT2.5I-C	PLT2.5I-C	50	1	10


Order number of cassettes required.

Flag Label Cassettes

- Fast-loading P1™ Label Cassette includes both label material and ribbon to make changing labels easy
- Provides larger label area for small cables
- Innovative design allows flag labels to be applied in either adhesive or non-adhesive orientations



 Polyester (AJ)

 -40°F to 302°F (-40°C to 150°C)


Part Number	Color	Width		Length		Min. Cable O.D.		Max. Wire O.D.		Wire Range	Labels Per Cassette	Std. Pkg. Qty.	Std. Ctn. Qty.
		In.	mm	In.	mm	In.	mm	In.	mm				
F100X150AJC	White	1.00	25.4	1.50	38.1	0.12	3.1	0.20	5.1	12 – 10 AWG	200	1	10


Non-Laminated Label Cassettes


- Fast-loading P1™ Label Cassette includes both label material and ribbon to make changing labels easy
- Non-laminated adhesive labels for wire/cable identification
- Vinyl cloth labels can be repositioned or reused



 Vinyl Cloth (CB)

 50°F to 170°F (10°C to 77°C)

 Nylon Cloth (C1, C2)

 -40°F to 285°F (-40°C to 140°C)

Die-Cut Vinyl Cloth Labels

Part Number	Color	Width		Length		Min. Cable O.D.		Max. Wire O.D.		Wire Range	Labels Per Cassette	Std. Pkg. Qty.	Std. Ctn. Qty.
		In.	mm	In.	mm	In.	mm	In.	mm				
N050X075CBC*	White	0.50	12.7	0.75	19.1	0.12	3.1	0.16	4.1	12 – 10 AWG	125	1	10
N100X075CBC	White	1.00	25.4	0.75	19.1	0.12	3.1	0.16	4.1	12 – 10 AWG	125	1	10
N050X150CBC*	White	0.50	12.7	1.50	38.1	0.24	6.1	0.40	10.2	8 – 2 AWG	75	1	10
N100X125CBC*	White	1.00	25.4	1.25	31.8	0.20	5.1	0.32	8.1	10 – 6 AWG	75	1	10
N100X150CBC	White	1.00	25.4	1.50	38.1	0.24	6.1	0.40	10.2	8 – 2 AWG	75	1	10
N100X175CBC*	White	1.00	25.4	1.75	44.5	0.28	7.1	0.48	12.2	6 – 1 AWG	50	1	10

*Perforated labels can be used as full-sized or half-sized markers.
Order number of cassettes required.

Continuous Vinyl Cloth Tape

Part Number	Color	Height		Length		Std. Pkg. Qty.	Std. Ctn. Qty.
		In.	mm	Ft.	m		
T050X000CBC-BK	White	0.50	12.7	12.5	3.8	1	10
T100X000CBC-BK	White	1.00	25.4	12.5	3.8	1	10

Order number of cassettes required.

Die-Cut Nylon Cloth Labels

Part Number	Color	Width		Length		Min. Cable O.D.		Max. Wire O.D.		Wire Range	Labels Per Cassette	Std. Pkg. Qty.	Std. Ctn. Qty.
		In.	mm	In.	mm	In.	mm	In.	mm				
N050X075C1C	White	0.50	12.7	0.75	19.1	0.12	3.1	0.16	4.1	12 – 10 AWG	250	1	10
N050X075C2C	Yellow	0.50	12.7	0.75	19.1	0.12	3.1	0.16	4.1	12 – 10 AWG	250	1	10
N050X125C1C	White	0.50	12.7	1.25	31.8	0.20	5.1	0.32	8.1	10 – 6 AWG	150	1	10
N050X125C2C	Yellow	0.50	12.7	1.25	31.8	0.20	5.1	0.32	8.1	10 – 6 AWG	150	1	10
N100X075C1C	White	1.00	25.4	0.75	19.1	0.12	3.1	0.16	4.1	12 – 10 AWG	250	1	10
N100X075C2C	Yellow	1.00	25.4	0.75	19.1	0.12	3.1	0.16	4.1	12 – 10 AWG	250	1	10
N100X125C1C	White	1.00	25.4	1.25	31.8	0.20	5.1	0.32	8.1	10 – 6 AWG	150	1	10
N100X125C2C	Yellow	1.00	25.4	1.25	31.8	0.20	5.1	0.32	8.1	10 – 6 AWG	150	1	10

Order number of cassettes required.

Non-Laminated Label Cassettes (continued)

Continuous Nylon Cloth Tape

Part Number	Color	Height		Length		Std. Pkg. Qty.	Std. Ctn. Qty.
		In.	mm	Ft.	m		
T038X000C1C-BK	White	0.38	9.7	18.0	5.5	1	10
T038X000C2C-BK	Yellow	0.38	9.7	18.0	5.5	1	10
T050X000C1C-BK	White	0.50	12.7	18.0	5.5	1	10
T050X000C2C-BK	Yellow	0.50	12.7	18.0	5.5	1	10
T075X000C1C-BK	White	0.75	19.1	18.0	5.5	1	10
T075X000C2C-BK	Yellow	0.75	19.1	18.0	5.5	1	10
T100X000C1C-BK	White	1.00	25.4	18.0	5.5	1	10
T100X000C2C-BK	Yellow	1.00	25.4	18.0	5.5	1	10

Order number of cassettes required.

Heat Shrink Label Cassettes

- Fast-loading P1™ Label Cassette includes both label material and ribbon to make changing labels easy
- Meets print performance requirements of MIL-M-81531 and MIL-STD-202G Method 215K, Solution A, C, and D
- Meets UL Standard 224 for flammability
- Shrink ratio 3:1
- Non-adhesive flattened heat shrinkable polyolefin for wire/cable identification



Heat Shrinkable Polyolefin (H1, H2)



-67°F to 275°F (-55°C to 135°C)

Die-Cut Heat Shrink Labels

Part Number	Color	Width		Length		Min. Cable O.D.		Max. Wire O.D.		Wire Range	Labels Per Cassette	Std. Pkg. Qty.	Std. Ctn. Qty.
		In.	mm	In.	mm	In.	mm	In.	mm				
H100X025H1C	White	0.25	6.4	1.00	25.4	0.04	1.0	0.13	3.3	22 – 18 AWG	100	1	10
H100X025H2C	Yellow	0.25	6.4	1.00	25.4	0.04	1.0	0.13	3.3	22 – 18 AWG	100	1	10
H100X034H1C	White	0.34	8.6	1.00	25.4	0.06	1.5	0.19	4.8	18 – 12 AWG	100	1	10
H100X034H2C	Yellow	0.34	8.6	1.00	25.4	0.06	1.5	0.19	4.8	18 – 12 AWG	100	1	10
H100X044H1C	White	0.44	11.2	1.00	25.4	0.08	2.0	0.25	6.4	16 – 10 AWG	100	1	10
H100X044H2C	Yellow	0.44	11.2	1.00	25.4	0.08	2.0	0.25	6.4	16 – 10 AWG	100	1	10
H100X064H1C	White	0.64	16.3	1.00	25.4	0.13	3.3	0.38	9.7	12 – 6 AWG	75	1	10
H100X064H2C	Yellow	0.64	16.3	1.00	25.4	0.13	3.3	0.38	9.7	12 – 6 AWG	75	1	10
H100X084H1C	White	0.84	21.3	1.00	25.4	0.17	4.3	0.50	12.7	8 – 1 AWG	75	1	10
H100X084H2C	Yellow	0.84	21.3	1.00	25.4	0.17	4.3	0.50	12.7	8 – 1 AWG	75	1	10

Order number of cassettes required.

Continuous Heat Shrink Labels


Part Number	Color	Width		Length		Min. Cable O.D.		Max. Wire O.D.		Wire Range	Std. Pkg. Qty.	Std. Ctn. Qty.
		In.	mm	Ft.	m	In.	mm	In.	mm			
H000X025H1C	White	0.25	6.4	8.0	2.4	0.04	1.0	0.13	3.3	22 – 18 AWG	1	10
H000X025H2C	Yellow	0.25	6.4	8.0	2.4	0.04	1.0	0.13	3.3	22 – 18 AWG	1	10
H000X034H1C	White	0.34	8.6	8.0	2.4	0.06	1.5	0.19	4.8	18 – 12 AWG	1	10
H000X034H2C	Yellow	0.34	8.6	8.0	2.4	0.06	1.5	0.19	4.8	18 – 12 AWG	1	10
H000X044H1C	White	0.44	11.2	6.0	1.8	0.08	2.0	0.25	6.4	16 – 10 AWG	1	10
H000X044H2C	Yellow	0.44	11.2	6.0	1.8	0.08	2.0	0.25	6.4	16 – 10 AWG	1	10
H000X064H1C	White	0.64	16.3	6.0	1.8	0.13	3.3	0.38	9.7	12 – 6 AWG	1	10
H000X064H2C	Yellow	0.64	16.3	6.0	1.8	0.13	3.3	0.38	9.7	12 – 6 AWG	1	10
H000X084H1C	White	0.84	21.3	6.0	1.8	0.17	4.3	0.50	12.7	8 – 1 AWG	1	10
H000X084H2C	Yellow	0.84	21.3	6.0	1.8	0.17	4.3	0.50	12.7	8 – 1 AWG	1	10


Order number of cassettes required.

General Component Label Cassettes


- Fast-loading P1™ Label Cassette includes both label material and ribbon to make changing labels easy
- Multi-purpose labels for identifying flat surfaces such as components, control panels, circuit boards, and general labeling
- Die-cut labels designed to provide maximum aesthetic quality and appearance
- Vinyl cloth labels can be repositioned or reused
- Super tack adhesive labels are ideal for rough, textured, or coated surfaces
- Tamper-resistant, destructible labels are designed to prevent easy removal





 Vinyl Cloth (CB)

 50°F to 170°F (10°C to 77°C)


 Polyester (YJ, YL, YM)

 -40°F to 302°F (-40°C to 150°C)

 Polyester Super Tack (YP)

 -40°F to 302°F (-40°C to 150°C)

 Tamper Resistant Polyolefin (FN)

 -40°F to 176°F (-40°C to 80°C)

Polyester Component Labels

Part Number	Color	Width		Height		Labels Per Cassette	Std. Pkg. Qty.	Std. Ctn. Qty.
		In.	mm	In.	mm			
C060X020YJC	White	0.60	15.2	0.20	5.1	750	1	10
C075X025YLC	Yellow	0.75	19.1	25.4	6.4	500	1	10
C100X025YJC	White	1.00	25.4	0.25	6.4	500	1	10
C100X025YLC	Yellow	1.00	25.4	0.25	6.44	500	1	10
C100X050YJC	White	1.00	25.4	0.50	12.7	500	1	10
C100X050YMC	Silver	1.00	25.4	0.50	12.7	500	1	10
C150X075YJC	White	1.50	38.1	0.75	19.1	250	1	10
C200X050YJC	White	2.00	50.8	0.50	12.7	200	1	10
C200X100YJC	White	2.00	50.8	1.00	25.4	200	1	10
C200X100YMC	Silver	2.00	50.8	1.00	25.4	150	1	10

Order number of cassettes required.

Vinyl Cloth Component Labels

Part Number	Color	Width		Height		Labels Per Cassette	Std. Pkg. Qty.	Std. Ctn. Qty.
		In.	mm	In.	mm			
C100X050CBC	White	1.00	25.4	0.50	12.7	175	1	10
C200X050CBC	White	2.00	50.8	0.50	12.7	50	1	10

Order number of cassettes required.

Super Tack Polyester Component Labels

Part Number	Color	Width		Height		Labels Per Cassette	Std. Pkg. Qty.	Std. Ctn. Qty.
		In.	mm	In.	mm			
C100X050YPC	White	1.00	25.4	0.50	12.7	250	1	10
C150X075YPC	White	1.50	38.1	0.75	19.1	175	1	10
C200X050YPC	White	2.00	50.8	0.50	12.7	150	1	10
C200X100YPC	White	2.00	50.8	1.00	25.4	150	1	10

Order number of cassettes required.

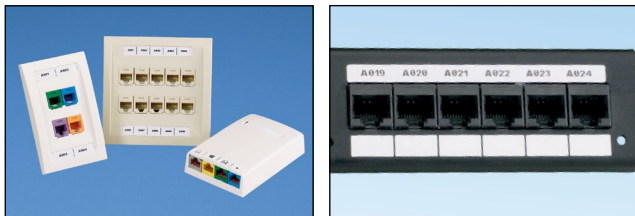
Tamper Resistant Component Labels

Part Number	Color	Width		Height		Labels Per Cassette	Std. Pkg. Qty.	Std. Ctn. Qty.
		In.	mm	In.	mm			
C189X047FNC	White	1.89	48.0	0.47	12.0	175	1	10

Order number of cassettes required.

Network Component Label Cassettes


- To find the suggested label solutions for a specific network component, refer to the Physical Infrastructure Systems Catalog (SA-NCCB51)
- Fast-loading P1™ Label Cassette includes both label material and ribbon to make changing labels easy
- Use for identifying patch panels, faceplates, punchdown blocks, and other network systems hardware
- Die-cut labels designed to provide maximum aesthetic quality and appearance



 Polyolefin (FJ)

 -40°F to 180°F (-40°C to 82°C)

 Non-Adhesive Polyester (Y1)

 -10°F to 311°F (-23°C to 155°C)

Polyolefin Component Labels

Part Number	Color	Width		Height		Application	Labels Per Cassette	Std. Pkg. Qty.	Std. Ctn. Qty.
		In.	mm	In.	mm				
C061X030FJC	White	0.61	15.5	0.30	7.6	1-port	500	1	10
C125X030FJC	White	1.25	31.8	0.30	7.6	2-port	200	1	10
C138X019FJC	White	1.38	35.1	0.19	4.8	module	200	1	10
C188X030FJC	White	1.88	47.8	0.30	7.6	3-port	150	1	10
C200X100FJC	White	2.00	50.8	1.00	25.4	SLCT	150	1	10
C252X030FJC	White	2.52	64.0	0.30	7.6	4-port	125	1	10
C261X030FJC	White	2.61	66.3	0.30	7.6	4-port	125	1	10
C315X030FJC	White	3.15	80.0	0.30	7.6	5-port	100	1	10
C379X030FJC	White	3.79	96.3	0.30	7.6	6-port	75	1	10

Order number of cassettes required.

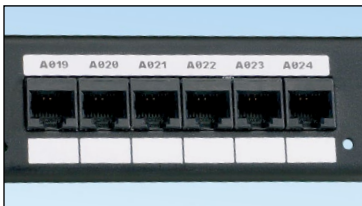
Non-Adhesive Polyester Component Labels

Part Number	Color	Width		Height		Application	Labels Per Cassette	Std. Pkg. Qty.	Std. Ctn. Qty.
		In.	mm	In.	mm				
C150X030Y1C	White	1.50	38.1	0.30	7.6	3-port	200	1	10
C195X040Y1C	White	1.95	49.5	0.40	10.2	Single-gang faceplate	100	1	10
C261X035Y1C	White	2.61	66.3	0.35	8.9	4-port	75	1	10
C282X030Y1C	White	2.82	71.6	0.30	7.6	4-port	75	1	10
C288X040Y1C	White	2.88	73.2	0.40	10.2	Double-gang faceplate	75	1	10
C390X030Y1C	White	3.90	99.1	0.30	7.6	6-port	50	1	10
C750X050Y1C	White	7.50	190.5	0.50	12.7	110 Punchdown Block	30	1	10
C788X050Y1C	White	7.88	200.2	0.50	12.7	GP6™ PLUS Punchdown System	30	1	10

Order number of cassettes required.

Ultimate ID® Network Label Cassette

- Fast-loading P1™ Label Cassette includes both label material and ribbon to make changing labels easy
- Label cassette designed for use with the Ultimate ID® Faceplates, Patch Panels, Marker Ties, Modular Furniture Faceplates, and Surface Mount Boxes
- Labels assist in the compliance of TIA-606-B labeling standard



Non-Adhesive Polyester

-10°F to 311°F (-23°C to 155°C)

Part Number	Ribbon and Material Color	Height		Length		Std. Pkg. Qty.	Std. Ctn. Qty.
		In.	mm	Ft.	m		
UILS8BW	Black on White	0.24	6.0	25.0	7.6	1	10

Order number of labels required in multiples of Std. Pkg. Qty.

Continuous Terminal Block Label Cassettes

- Fast-loading P1™ Label Cassette includes both label material and ribbon to make changing labels easy
- Print terminal block labels ranging in size from 0.19 inches to 0.38 inches



Polyolefin (FJ)

-40°F to 180°F (-40°C to 82°C)

Part Number	Ribbon and Material Color	Height		Length		Std. Pkg. Qty.	Std. Ctn. Qty.
		In.	mm	Ft.	m		
T019X000FJC-BK	Black on White	0.19	4.8	25.0	7.6	1	10
T024X000FJC-BK	Black on White	0.24	6.1	25.0	7.6	1	10
T031X000FJC-BK	Black on White	0.31	7.9	25.0	7.6	1	10
T038X000FJC-BK	Black on White	0.38	9.7	25.0	7.6	1	10

Order number of labels required in multiples of Std. Pkg. Qty.

Continuous Reflective Tape Cassettes

- Fast-loading P1™ Label Cassette includes both label material and ribbon to make changing labels easy
- Reflective material improves label visibility in low light conditions
- For flat label applications only



Reflective Polymer Film (R)

-40°F to 180°F (-40°C to 82°C)

Part Number	Ribbon and Material Color	Height		Length		Std. Pkg. Qty.	Std. Ctn. Qty.
		In.	mm	Ft.	m		
T100X000RPC-BK	Black on White	1.00	25.4	18.0	5.5	1	10
T100X000RUC-BK	Black on Orange	1.00	25.4	18.0	5.5	1	10
T100X000RXC-BK	Black on Yellow	1.00	25.4	18.0	5.5	1	10


Order number of labels required in multiples of Std. Pkg. Qty.

Continuous Tape Cassettes

- Fast-loading P1™ Label Cassette includes both label material and ribbon to make changing labels easy
- Print custom pipe markers, voltage markers, signs, bin markers, and network identification labels on demand
- For flat label applications only




 Polyester (YK)

 -40°F to 302°F (-40°C to 150°C)

 VPC (White Vinyl only)

 -58°F to 176°F (-50°C to 80°C)

 Vinyl (V, Colored Vinyl; non-White)

 -50°F to 225°F (-46°C to 107°C)



Part Number	Ribbon and Material Color	Height		Length		Std. Pkg. Qty.	Std. Ctn. Qty.
		In.	mm	Ft.	m		
T024X000VPC-BK	Black on White	0.24	6.1	25.0	7.6	1	10
T024X000VYC-WH	White on Black	0.24	6.1	25.0	7.6	1	10
T024X000YKC-BK	Black on Clear	0.24	6.1	25.0	7.6	1	10
T038X000VPC-BK	Black on White	0.38	9.7	25.0	7.6	1	10
T038X000VQC-BK	Black on Blue	0.38	9.7	25.0	7.6	1	10
T038X000VQC-WH	White on Blue	0.38	9.7	25.0	7.6	1	10
T038X000VSC-BK	Black on Green	0.38	9.7	25.0	7.6	1	10
T038X000VSC-WH	White on Green	0.38	9.7	25.0	7.6	1	10
T038X000VUC-BK	Black on Orange	0.38	9.7	25.0	7.6	1	10
T038X000VWC-BK	Black on Red	0.38	9.7	25.0	7.6	1	10
T038X000VWC-WH	White on Red	0.38	9.7	25.0	7.6	1	10
T038X000VXC-BK	Black on Yellow	0.38	9.7	25.0	7.6	1	10
T038X000VYC-WH	White on Black	0.38	9.7	25.0	7.6	1	10
T038X000YKC-BK	Black on Clear	0.38	9.7	25.0	7.6	1	10
T050X000VPC-BK	Black on White	0.50	12.7	25.0	7.6	1	10
T050X000VPC-RD	Red on White	0.50	12.7	25.0	7.6	1	10
T050X000VQC-BK	Black on Blue	0.50	12.7	25.0	7.6	1	10
T050X000VQC-WH	White on Blue	0.50	12.7	25.0	7.6	1	10
T050X000VSC-BK	Black on Green	0.50	12.7	25.0	7.6	1	10
T050X000VSC-WH	White on Green	0.50	12.7	25.0	7.6	1	10
T050X000VUC-BK	Black on Orange	0.50	12.7	25.0	7.6	1	10
T050X000VWC-BK	Black on Red	0.50	12.7	25.0	7.6	1	10
T050X000VWC-WH	White on Red	0.50	12.7	25.0	7.6	1	10
T050X000VXC-BK	Black on Yellow	0.50	12.7	25.0	7.6	1	10
T050X000VYC-WH	White on Black	0.50	12.7	25.0	7.6	1	10
T050X000YKC-BK	Black on Clear	0.50	12.7	25.0	7.6	1	10
T050X000YKC-WH	White on Clear	0.50	12.7	25.0	7.6	1	10
T075X000VPC-BK	Black on White	0.75	19.1	25.0	7.6	1	10
T075X000VQC-BK	Black on Blue	0.75	19.1	25.0	7.6	1	10
T075X000VQC-WH	White on Blue	0.75	19.1	25.0	7.6	1	10
T075X000VSC-BK	Black on Green	0.75	19.1	25.0	7.6	1	10
T075X000VSC-WH	White on Green	0.75	19.1	25.0	7.6	1	10
T075X000VUC-BK	Black on Orange	0.75	19.1	25.0	7.6	1	10
T075X000VWC-BK	Black on Red	0.75	19.1	25.0	7.6	1	10
T075X000VWC-WH	White on Red	0.75	19.1	25.0	7.6	1	10
T075X000VXC-BK	Black on Yellow	0.75	19.1	25.0	7.6	1	10
T075X000VYC-WH	White on Black	0.75	19.1	25.0	7.6	1	10
T075X000YKC-BK	Black on Clear	0.75	19.1	25.0	7.6	1	10
T100X000VPC-BK	Black on White	1.00	25.4	25.0	7.6	1	10
T100X000VPC-RD	Red on White	1.00	25.4	25.0	7.6	1	10
T100X000VQC-BK	Black on Blue	1.00	25.4	25.0	7.6	1	10
T100X000VQC-WH	White on Blue	1.00	25.4	25.0	7.6	1	10
T100X000VSC-BK	Black on Green	1.00	25.4	25.0	7.6	1	10
T100X000VSC-WH	White on Green	1.00	25.4	25.0	7.6	1	10
T100X000VUC-BK	Black on Orange	1.00	25.4	25.0	7.6	1	10
T100X000VWC-BK	Black on Red	1.00	25.4	25.0	7.6	1	10
T100X000VWC-WH	White on Red	1.00	25.4	25.0	7.6	1	10
T100X000VXC-BK	Black on Yellow	1.00	25.4	25.0	7.6	1	10
T100X000VYC-WH	White on Black	1.00	25.4	25.0	7.6	1	10
T100X000YKC-BK	Black on Clear	1.00	25.4	25.0	7.6	1	10
T100X000YKC-WH	White on Clear	1.00	25.4	25.0	7.6	1	10

Order number of labels required in multiples of Std. Pkg. Qty.

Label Material Selection Guide

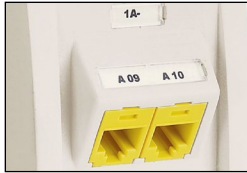
Material Type	Temperature Range	Description	Color(s)	Outdoor Rated	UL Recognized	RoHS Compliant†
Heat Shrinkable Polyolefin [^]	-67°F to 275°F (-55°C to 135°C)	Polyolefin heat shrink for wire and cable marking applications, excellent print quality.	White Yellow	Yes	UL 224	Yes
Nylon Cloth, Adhesive	-40°F to 285°F (-40°C to 140°C)	General purpose material for wire and cable marking as well as flat surfaces; superior legibility; not repositionable.	White Yellow	No	No	Yes
Polyester, Adhesive	-40°F to 302°F (-40°C to 150°C)	General purpose material for component labeling; excellent print quality; does not stretch or easily tear.	Clear	Yes	UL 969	Yes
	-10°F to 302°F (-23°C to 150°C)	General purpose material for component labeling; excellent print quality; does not stretch or easily tear.	Silver White	Yes	Yes	Yes
			Yellow	Yes	No	Yes
Polyester, Non-Adhesive	-10°F to 311°F (-23°C to 155°C)	Non-adhesive material ideal for network systems labeling; provides durability, high temperature resistance, and dimensional stability.	White	Yes	No	Yes
Polyester, Super-Tack Adhesive	-40°F to 302°F (-40°C to 150°C)	Extra strength adhesive material ideal for rough, textured, or coated surfaces.	White	Yes	Yes	Yes
	-40°F to 302°F (-40°C to 150°C)	Ideal for flag type, wire and cable marking; unique design can be applied in adhesive and non-adhesive orientations.	White	Yes	Yes	Yes
Polyester/Polyolefin, Combination Non-Adhesive	-58°F to 221°F (-50°C to 105°C)	Non-adhesive marker plates offer crisp, clear legends with superior legibility; attachable in a horizontal or vertical orientation.	White Yellow	Yes	No	Yes
Polymer Film, Adhesive	-40°F to 180°F (-40°C to 82°C)	Indoor/outdoor rated; heavy duty reflective material for flat applications and safety and facility identification; resistant to UV light, chemical atmosphere and abrasion.	White Orange Yellow	Yes	Yes	Yes
	-40°F to 150°F (-40°C to 66°C)	Self-laminating film for wire and cable labeling; unique design allows labels to rotate or slide after installation.	White TIA Blue TIA Green TIA Red TIA Yellow Print-On	Yes	No	Yes
Polyolefin, Adhesive	-40°F to 180°F (-40°C to 82°C)	Durable, pliable material with permanent adhesive for terminal block and network component labels.	White	Yes	No	Yes
Polyolefin, Tamper Resistant	-40°F to 176°F (-40°C to 80°C)	Tamper resistant, destructible material designed to prevent easy removal.	White	No	UL 969	Yes
Self-Laminating Vinyl, Adhesive	-40°F to 150°F (-40°C to 66°C)	Self-laminating film for most general wire and cable labeling; conformable material.	White TIA Blue TIA Green TIA Red TIA Yellow Print-On	Yes	UL 969	Yes
Vinyl Cloth, Adhesive	50°F to 170°F (10°C to 77°C)	General purpose material, vinyl impregnated cloth resists oil and abrasion; material can be removed, repositioned, and reused.	White	Yes	UL 969	Yes
Vinyl, Adhesive	-58°F to 176°F (-50°C to 80°C)	General purpose material for pipe marking, bin marking and facility identification; conformable material for flat applications in indoor or outdoor environments.	White	Yes	UL 969	Yes
	-50°F to 225°F (-46°C to 107°C)		Black Blue Green Orange Red Yellow	Yes	UL 969	Yes

[^]Product meets print performance requirements of MIL-M-81531 and MIL-STD-202F Method 215A, Solution A, C, and D.

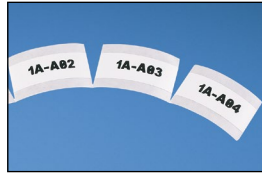
†Material is RoHS compliant per European Directive 2002/95/EC on the Restriction of Hazardous Substances (RoHS).

Label Design Flexibility

- Label cut-to-length functionality eliminates label waste and label trimming labor
- Partial-cut feature available to provide tear-apart strips of labels
- Large graphic display with backlight for improved visibility
- User interface available in English, French, German, Italian, Spanish, and Portuguese
- Market specific labeling tools simplify label creation for network components, panel building, and construction and maintenance
- Customize your labels with these advanced features:
 - Alpha and numeric serialization
 - Date and time stamp
 - Lines
 - Bar codes
 - Frames
 - Symbols
 - Data lists



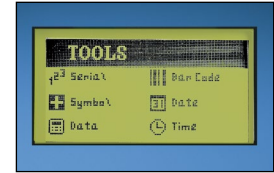
Cut-to-length labels



Partial-cut strip of labels



Graphic display with backlight



Customize labels with advanced features

PC Interface

Connect the PanTher™ LS8E or LS8EQ printer to a wireless laptop or desktop computer for importing data, system upgrades, and printing labels.



USB compatible

- Download and print label files from Microsoft Excel[^]
- Archive label files on a computer for later use or sharing
- Install LS8E or LS8EQ operating system upgrades
- Print labels directly from Panduit® Easy-Mark™ Labeling Software
- LS8-PCKIT includes a USB cable and CD-ROM with software and operator's manual

[^]Excel is a registered trademark of Microsoft Corporation in the United States and/or other countries.

Related Products

Easy-Mark™ Labeling Software

- Easy-Mark™ Labeling Software simplifies label creation for the specific needs of your applications
- Instructions and user interface are available in English, French, German, Italian, Spanish, Korean, Chinese, Portuguese, and Japanese
- Intuitive interview process allows automatic generation of compliant labels and signs
- Software selects and formats the optimum label for your specific project
- WYSIWYG (What You See Is What You Get) user interface, alpha/numeric serialization, data import, symbol import
- Easy-Mark™ Labeling Software is part of a complete line of innovative identification solutions from Panduit
- Supports most Windows[^] fonts drivers for standard thermal transfer, dot matrix, laser, and inkjet, including Panduit thermal transfer printers

System Requirements:

Windows[^] 2000, XP, Vista, Windows 7, or Windows 8; 64MB hard drive space and 64MB RAM (256MB RAM recommended); Microsoft.NET Framework 2.0 or higher; mouse or compatible device, CD-ROM drive, or USB port



Part Number	Part Description	Std. Pkg. Qty.	Std. Ctn. Qty.
PROG-EMCD3	Easy-Mark™ Labeling Software, CD-ROM.	1	10
PROG-EM2GO	Easy-Mark™ Portable Application, USB Flash Drive.	1	10

[^]Windows is a registered trademarks of Microsoft Corporation in the United States and/or other countries.

WORLDWIDE SUBSIDIARIES AND SALES OFFICES

PANDUIT CANADA
Markham, Ontario
cs-cdn@panduit.com
Phone: 800.777.3300

PANDUIT EUROPE LTD.
London, UK
cs-emea@panduit.com
Phone: 44.20.8601.7200

PANDUIT SINGAPORE PTE. LTD.
Republic of Singapore
cs-ap@panduit.com
Phone: 65.6305.7575

PANDUIT JAPAN
Tokyo, Japan
cs-japan@panduit.com
Phone: 81.3.6863.6000

PANDUIT LATIN AMERICA
Guadalajara, Mexico
cs-la@panduit.com
Phone: 52.33.3777.6000

PANDUIT AUSTRALIA PTY. LTD.
Victoria, Australia
cs-aus@panduit.com
Phone: 61.3.9794.9020

For a copy of Panduit product warranties, log on to www.panduit.com/warranty

For more information

Visit us at www.panduit.com

Contact Customer Service by email: cs@panduit.com
or by phone: 800.777.3300

©2016 Panduit Corp.
ALL RIGHTS RESERVED.

Printed in the U.S.A.

Product Bulletin Number **IDCB79--SA-ENG**

Replaces IDCB72--SA-ENG

1/2016