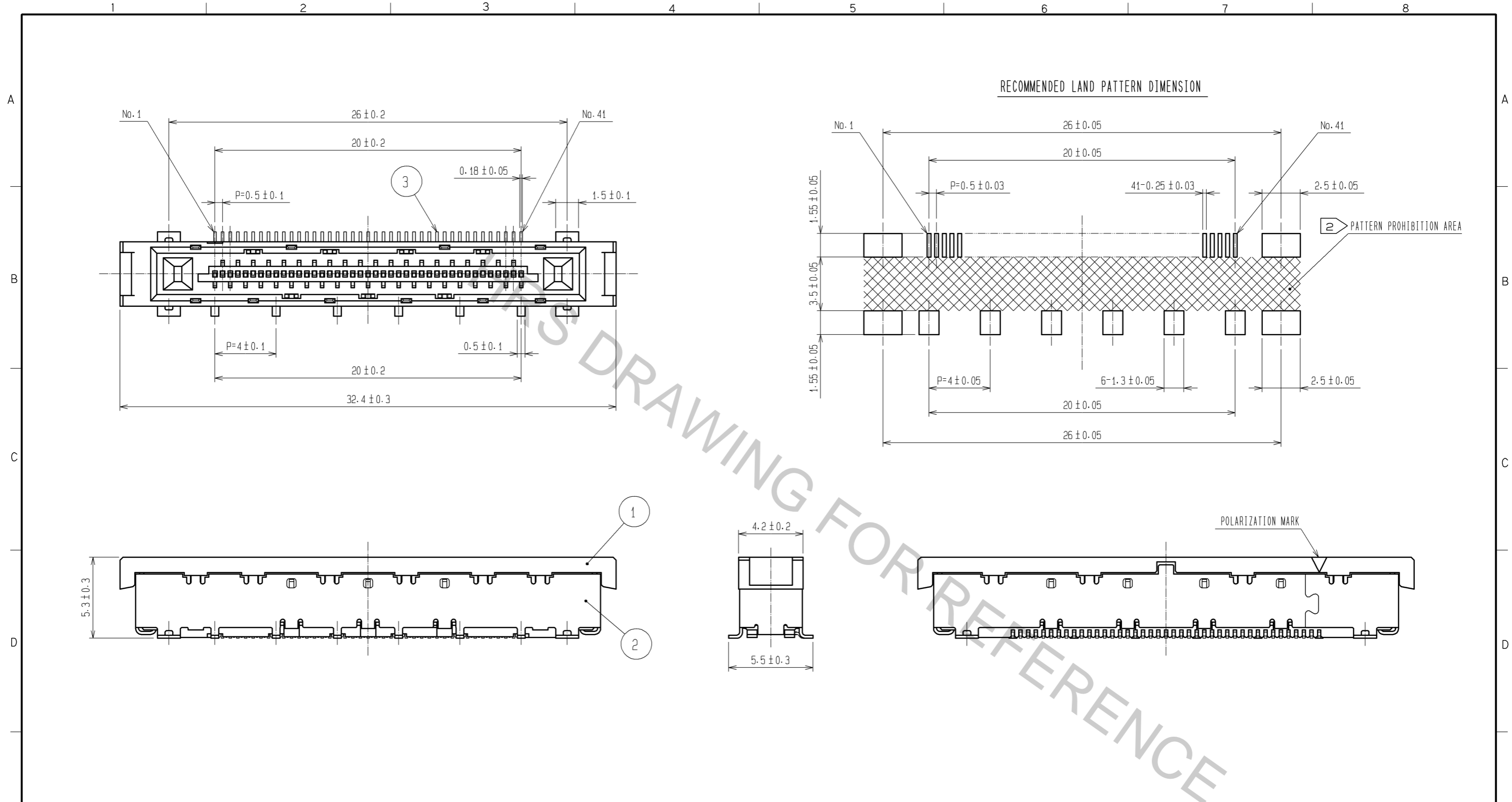


Apr.1.2017 Copyright 2017 HIROSE ELECTRIC CO., LTD. All Rights Reserved.

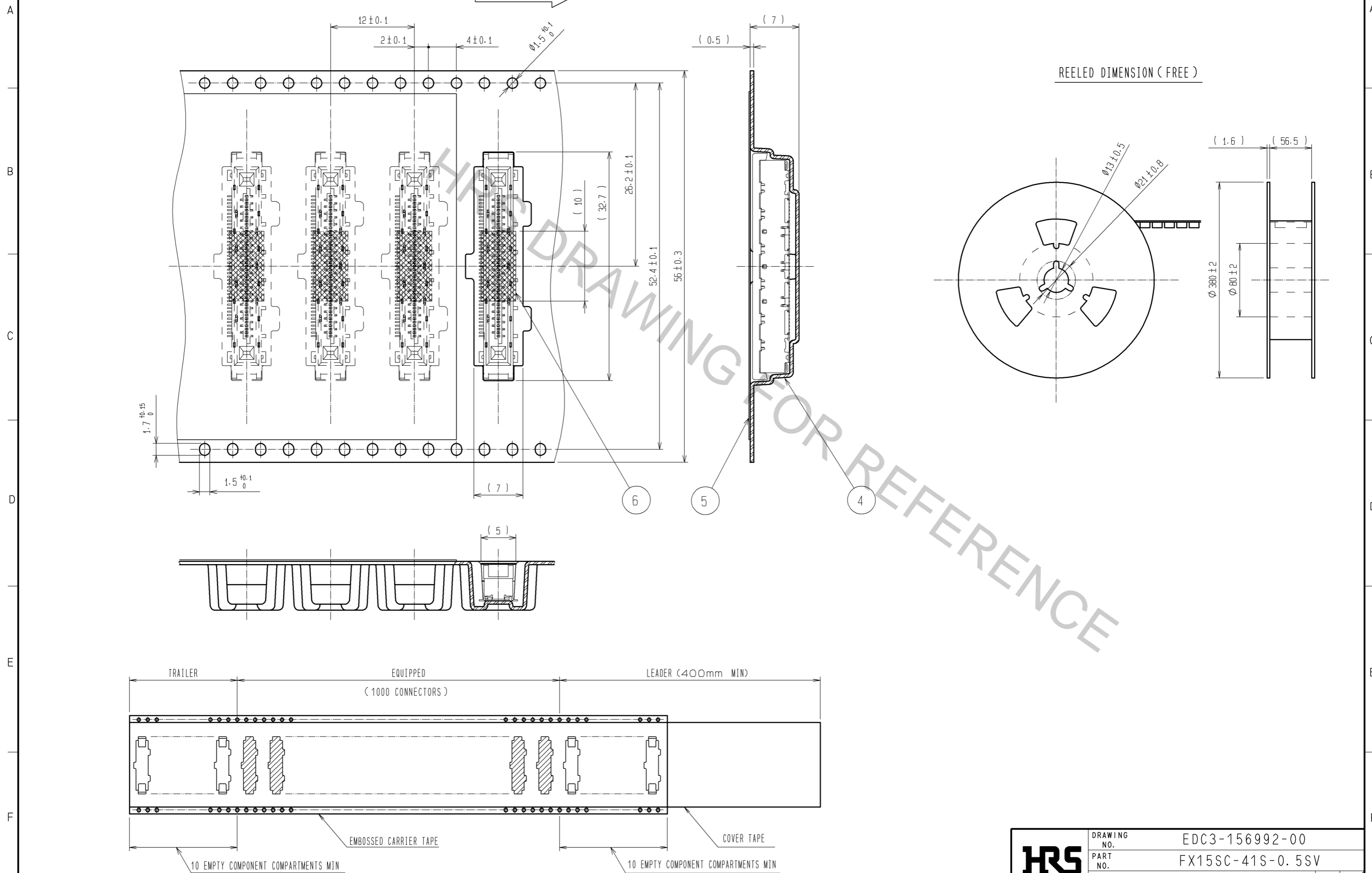
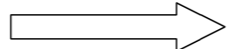


NOTE 1 LEAD CO-PLANARITY OF THIS PRODUCT TO BE 0.1MAX.  
 2 AREA OF INNER SMT LAND REQUIRES PATTERN PROHIBITION OR RESIST TREATMENT TO PREVENT THE PATTERN TOUCHING TO THE CONTACTS.  
 3 PACKAGING FOR THIS PRODUCT APPLIES EMBOSSED CARRIER TAPE PACKAGING. SEE SHEET 2/2 FOR DETAILS.  
 4 FINE SCRATCHES COULD BE FOUND ON THE SURFACE OF REF. ②GROUND PLATE, WHICH DOES NOT AFFECT THE PERFORMANCE.

| 3                                | COPPER ALLOY    | CONTACT AREA: GOLD 0.1μm min.<br>LEAD AREA: TIN PLATING 1μm min.<br>UNDER PLATING: NICKEL 0.5μm min. | 6                          | PI                       | (TAPE FOR VACUUM PICKUP) |
|----------------------------------|-----------------|--|----------------------------|--------------------------|--------------------------|
| 2                                | STAINLESS STEEL | TIN PLATING  | 5                          | PE                       | (COVER TAPE)             |
| 1                                | PA              | BLACK UL94V-0  | 4                          | PS                       | (EMBOSSED CARRIER TAPE)  |
| NO.                              | MATERIAL        | FINISH . REMARKS   | NO.                        | MATERIAL                 | FINISH . REMARKS         |
| UNITS mm                         |                 | SCALE 4 : 1  | COUNT                      | DESCRIPTION OF REVISIONS |                          |
| DESIGNED                         |                 | CHECKED  |                            | DATE                     |                          |
| APPROVED : HS. OKAWA 08.05.07    |                 |  | DRAWING NO. EDC3-156992-00 |                          |                          |
| CHECKED : HT. YAMAGUCHI 08.05.07 |                 |  | PART NO. FX15SC-41S-0.5SV  |                          |                          |
| DESIGNED : KN. SHIBUYA 08.05.07  |                 |  | CODE NO. CL575-2205-8-00   |                          |                          |
| DRAWN : AH. EDASHIGE 08.05.07    |                 |  | 1/2                        |                          |                          |

SPECIFICATION DRAWING OF PACKING (2 : 1)

THE DIRECTION OF PULLING OUT



|            |             |                  |
|------------|-------------|------------------|
| <b>HRS</b> | DRAWING NO. | EDC3-156992-00   |
|            | PART NO.    | FX15SC-41S-0.5SV |
|            | CODE NO.    | CL575-2205-8-00  |
|            |             | $\triangle$ 2/2  |

Apr.1.2017 Copyright 2017 HIROSE ELECTRIC CO., LTD. All Rights Reserved.