

SPECIFICATIONS

FITS:  
RB1 Series

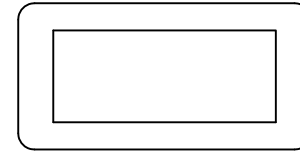
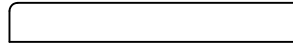
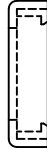
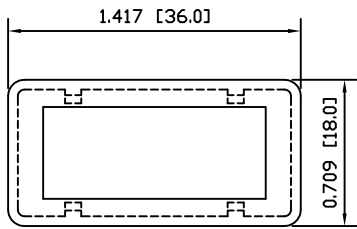
APPROVALS:  
**RoHS**  
COMPLIANT

MATERIALS

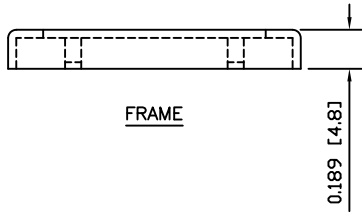
FRAME:  
Polyamide 6/6 (PA66)  
CAP:  
Polyvinyl Chloride (PVC)

COLORS

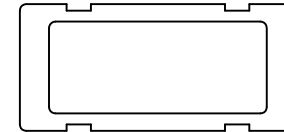
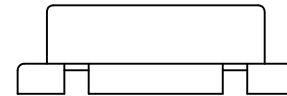
FRAME:  
White  
CAP:  
Clear



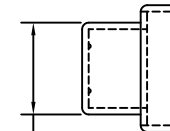
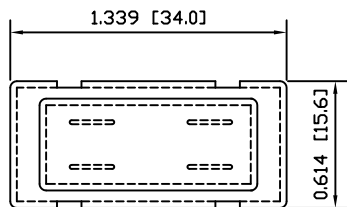
FRAME



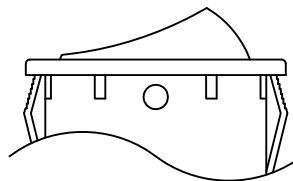
FRAME



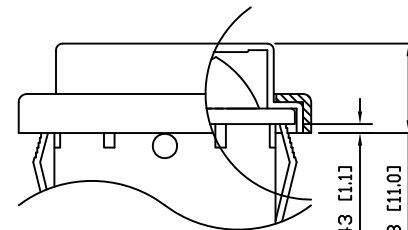
CAP



0.445 [11.3]



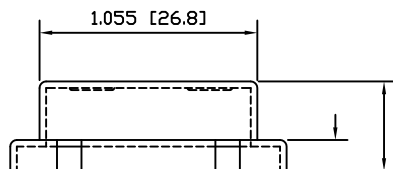
EXPLODED VIEW



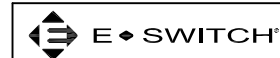
ASSEMBLED VIEW

0.043 [1.1]

0.433 [11.0]



CAP



ACC-F01-2

THE INFORMATION CONTAINED IN THIS DOCUMENT IS PROPRIETARY TO E-SWITCH AND IS NOT TO BE COPIED OR TRANSFERRED

A	INITIAL RELEASE	18758	10/01/19	CAB
REV.	DESCRIPTION	PCR	DATE	DRAWN BY

DIMENSIONS	INCHES [MILLIMETERS]
GENERAL TOLERANCES	±0.012 [±0.3] / ±1'
SCALE	DRAWING NOT TO SCALE
PROJECTION	1st Angle

DRAWING NUMBER	DATE	REVISION
38-ACCF012	JANUARY 19, 2010	A