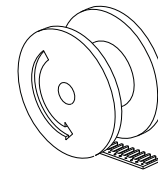
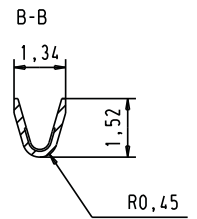
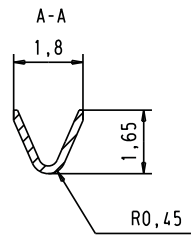
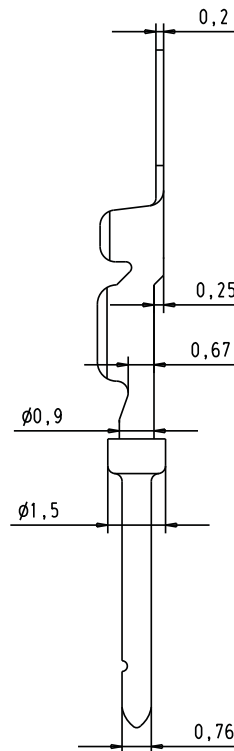
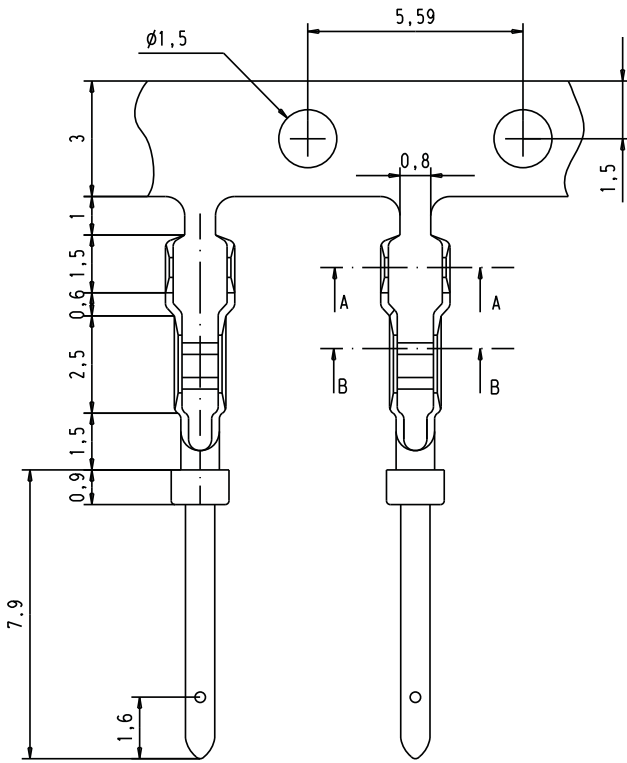


Alle Rechte vorbehalten/ All rights reserved



09560008155	0.76 $\mu\text{m Au}$
09560008157	3
Part number	Performance level

				Det.	Name
				16-SEP-02	CV
				Insp.	
31376	20-JAN-03	S.H.	Stand.		
31356	30-OCT-02	S.H.			
31064	16-SEP-02	CV			
Mod.	Det.	Name			


 All Dim. in mm
 Orig. Size DIN A 4

D-Sub, high density,
 stamped male contact
 for AWG 24-26
 10 Kpcs reel, unrolling left

TB 0956000815x
 Sub.

Maßstab/
 Scale
 7 : 1
 Blatt / Page
 1