

THIS DRAWING IS UNPUBLISHED.

RELEASED FOR PUBLICATION

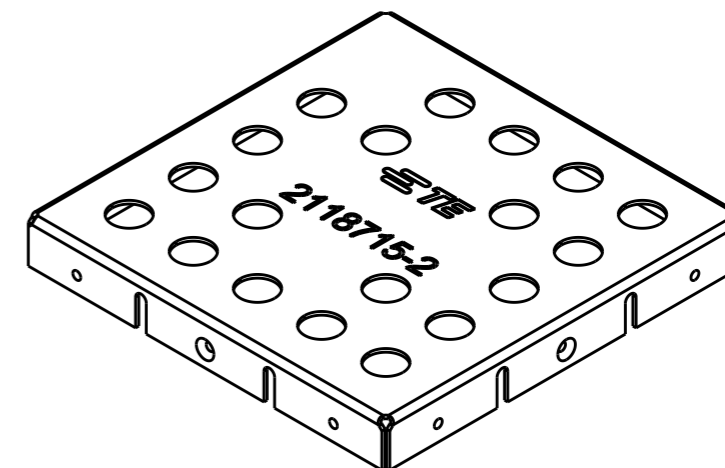
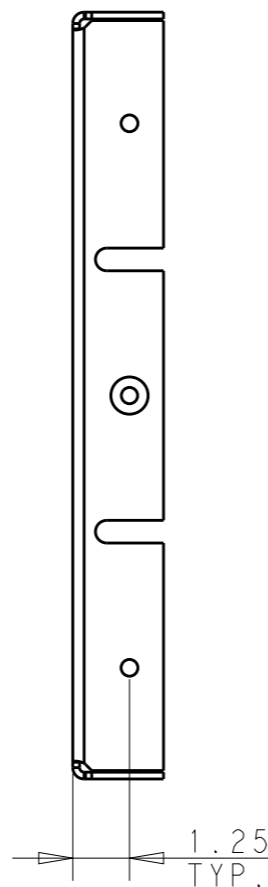
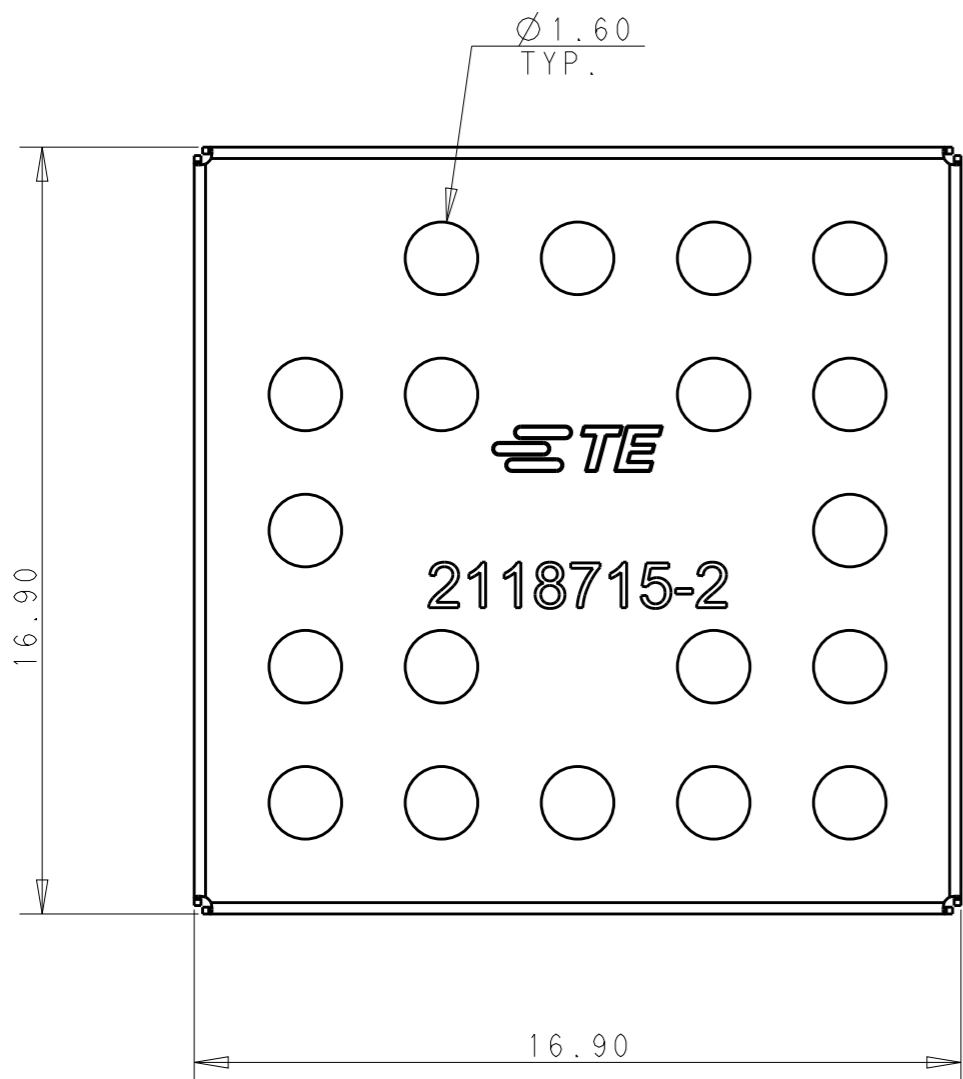
20

© COPYRIGHT 20 BY -

ALL RIGHTS RESERVED.

REVISIONS

P	LTR	DESCRIPTION	DATE	DWN	APVD
	4	INCREASE MATERIAL THICKNESS	11OCT2016	VL	SS
	A	DRAWING RELEASED	24APR2017	VL	SS
	A1	REVISED PER ECO-17-007644	26MAY2017	VL	SS
	A2	REVISED PER ECO-17-013857	20SEP2017	SS	HL



SCALE 4:1

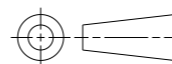
NOTES:

- 1 MATERIAL: 0.15mm CRS. 1,25 - 3.00µm MATTE TIN FINISH.
- 2 MATERIAL: 0.15mm AL. 1.20 - 2.00µm MATTE TIN FINISH OVER NICKEL FLASH.
- 3 STAMPING BURR OUTSIDE OF PART, MAX 0.05mm.
- 4 PARTS TO BE FREE OF OIL AND CONTAMINENTS.
- 5 PART IS RoHS COMPLIANT PER TE CONNECTIVITY STANDARD TEC-138-702.
- 6 REFER TO 3D MODEL FOR UNSPECIFIED DIMENSIONS.
- 7 PACKAGING: BULK

7	2	2118715-4
7	1	2118715-2
PACKAGING	MATERIAL	PART NUMBER

THIS DRAWING IS A CONTROLLED DOCUMENT.

DIMENSIONS:  
mm



TOLERANCES UNLESS OTHERWISE SPECIFIED:

- 0 PLC ±0.20
- 1 PLC ±0.15
- 2 PLC ±0.10
- 3 PLC ±
- 4 PLC ±
- ANGLES ±2

MATERIAL  
SEE TABLE

FINISH  
SEE TABLE

DWN V. LAC 06APR2016

CHK S. SU 24APR2017

APVD V. LAC 24APR2017

PRODUCT SPEC  
108-19493

APPLICATION SPEC  
114-115014

WEIGHT  
-

CUSTOMER DRAWING

**STE** TE Connectivity

NAME  
STANDARD SHIELD COVER

SIZE	CAGE CODE	DRAWING NO	RESTRICTED TO
A3	-	©-2118715	-

SCALE	SHEET	OF	REV
6:1	1	1	A2