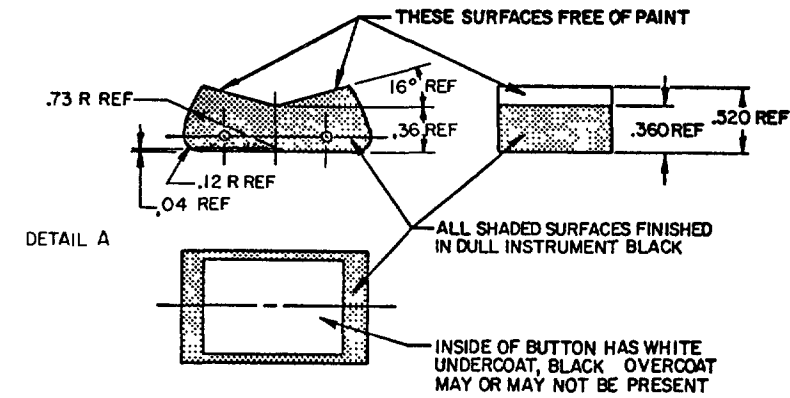
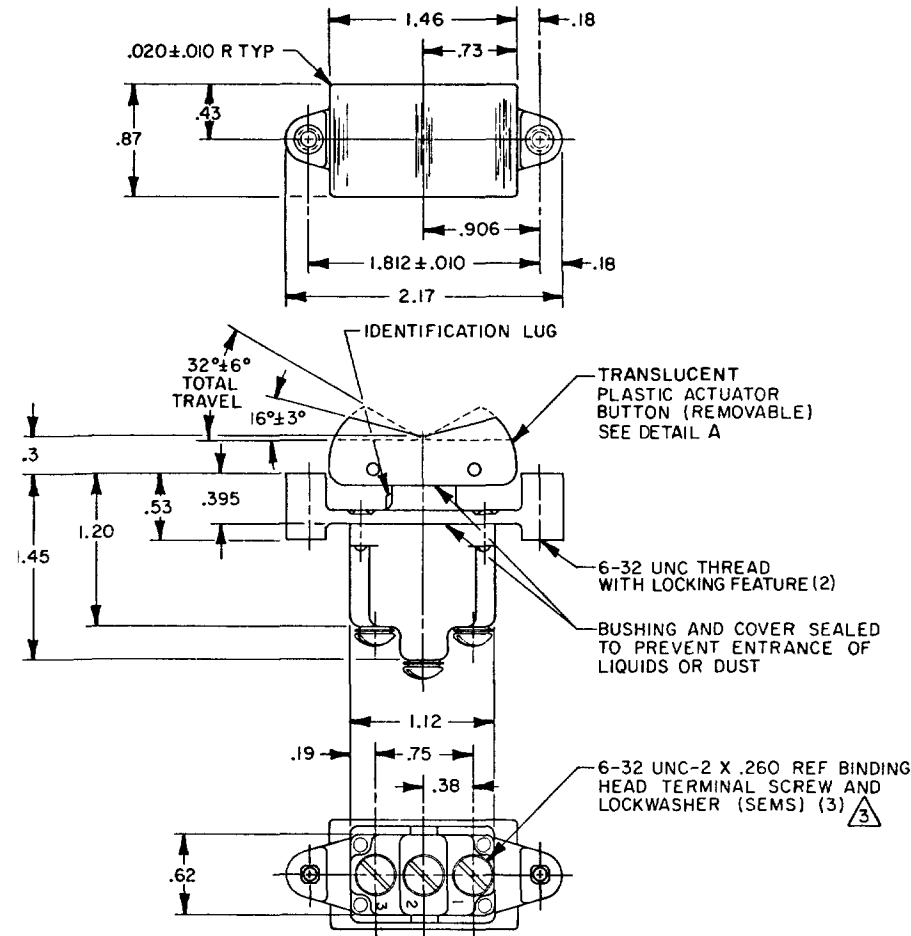


HONEYWELL  
PART NUMBER  
1TP1 SERIES CHART 1

REV	DOCUMENT	CHANGED BY	CHECK
7	0007019	KR 12AUG04	AK



- NOTES  
 1 - MICRO SWITCH CATALOG LISTING MARKED ON SIDE OF SWITCH  
 2 - SWITCHES WILL WITHSTAND TEMPERATURE OF 160°F  
 3 - SCREWS FURNISHED UNASSEMBLED  
 4 - FAA-PMA MUST BE MARKED ON SWITCH  
 5 - FOR MANUFACTURING DETAIL SEE ASSEMBLY DRAWING 1TP1-2 FOR FAA-PMA  
 6 - WEIGHT: .10 LB EST

REPLACES 1TP1 SERIES

4	CATALOG LISTING	CIRCUIT WITH BUTTON IN			ELECTRICAL DATA
		LUG SIDE (1-2)	CENTER (1-2)	OPPOSITE LUG (2-3)	
	1TP1-1	ON	OFF	ON	15A-125, 250 OR 277 VAC 1/2HP-125VAC; 1HP-250, 277VAC 5A-125VAC "L" CODE L191
FAA-PMA	1TP1-2	OFF	NONE	ON	
	1TP1-3	ON	NONE	ON	
	1TP1-2I	NONE	OFF	ON	
	1TP1-3I	NONE	ON	ON	
	Ⓟ	MOM OFF	NONE	ON	10A-125, 250, 277 VAC 1/4HP-125VAC; 1/2HP-250, 277 VAC 3A-125VAC "L" CODE L192
	1TP1-5	MOM ON	OFF	ON	
	1TP1-6	MOM ON	NONE	OFF	
	1TP1-7	MOM ON	OFF	MOM ON	
	1TP1-8	MOM ON	NONE	ON	
	Ⓞ	NONE	ON	MOM ON	
	1TP1-6I	MOM ON	OFF	NONE	

DESIGN UNITS: INCH  
 TOLERANCES UNLESS NOTED:  
 NO PLACE X ±  
 ONE PLACE .X ± 0.030  
 TWO PLACE .XX ± 0.015  
 THREE PLACE .XXX ± 0.005  
 FOUR PLACE .XXXX ±  
 ANGLES ±  
 THIRD ANGLE PROJECTION

DRAWN	GJW	12MAY97
CHECK		
THIS DRAWING COVERS A PROPRIETARY ITEM AND IS THE PROPERTY OF HONEYWELL. THIS DRAWING IS NOT TO BE COPIED OR USED WITHOUT THE PERMISSION OF HONEYWELL.		
INTERPRET PER ASME Y14.5M-1994 OTHER HONEYWELL ENGINEERING STANDARDS MAY APPLY		

**Honeywell**

TITLE  
**SWITCH - TOGGLE FLUSH KEY**

SIZE	TYPE	DRAWING NAME	REV
<b>B</b>	<b>I</b>	1TP1 SERIES CHART 1	7
SCALE	1:1	SHEET	1 OF 1