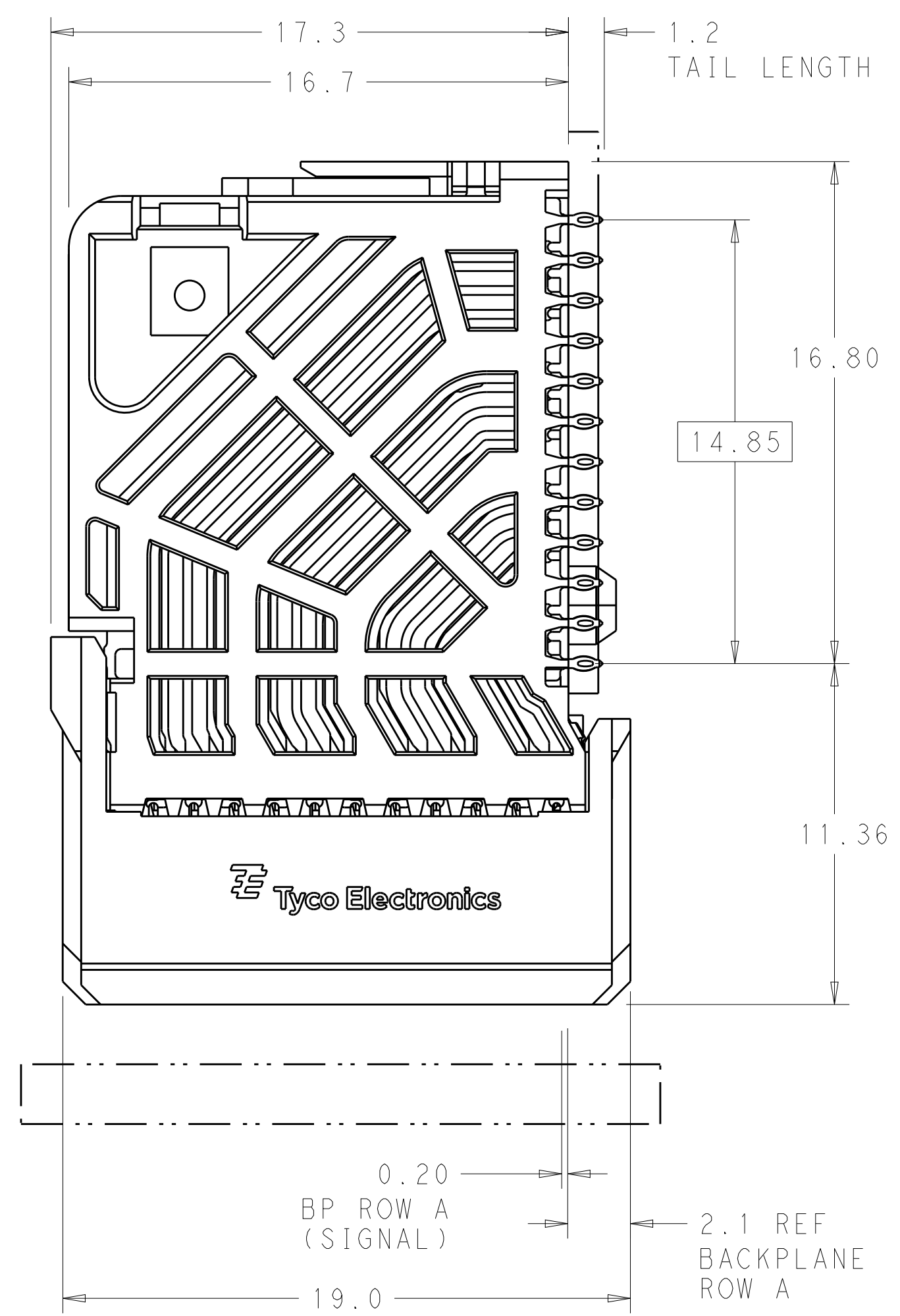
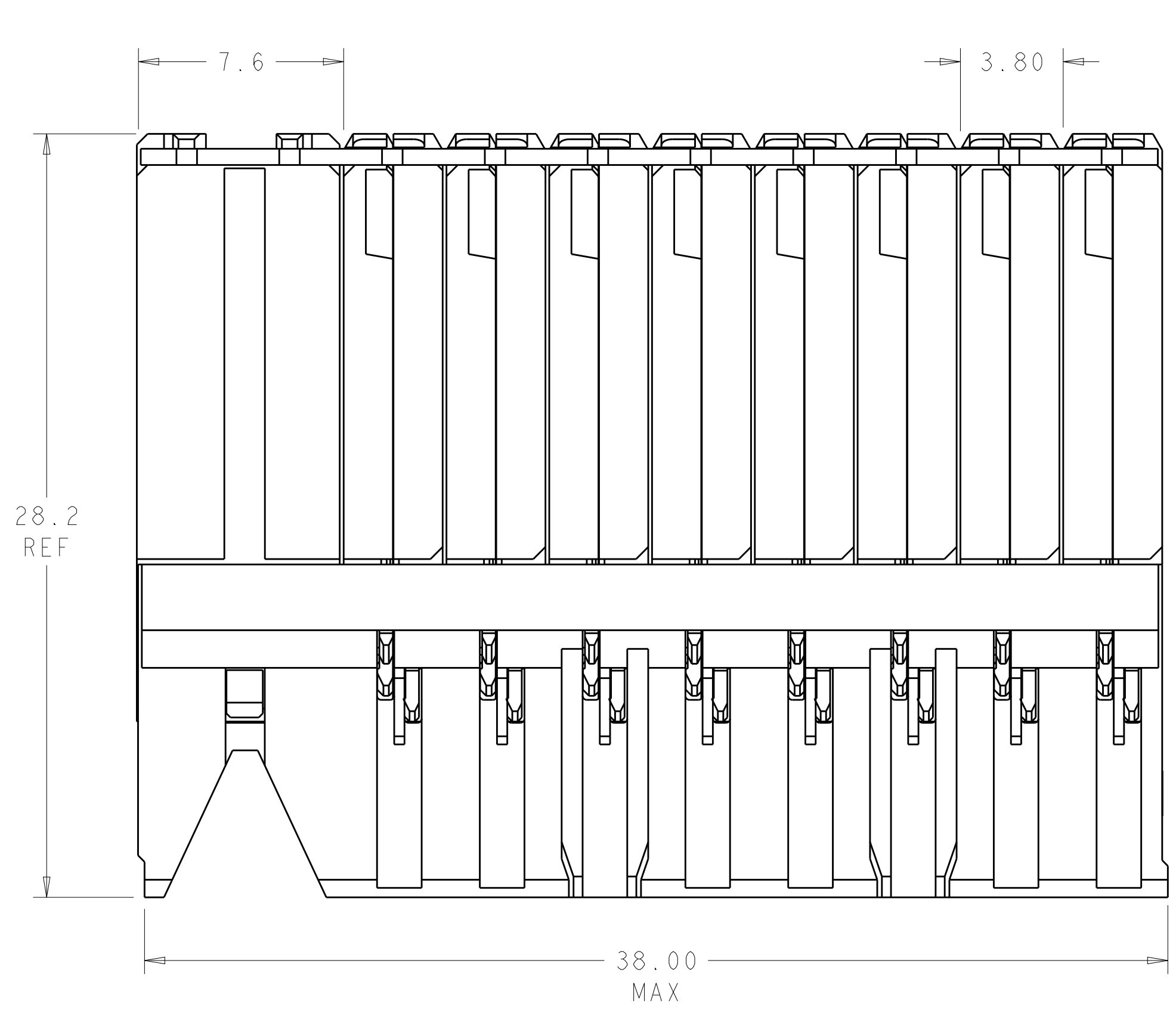


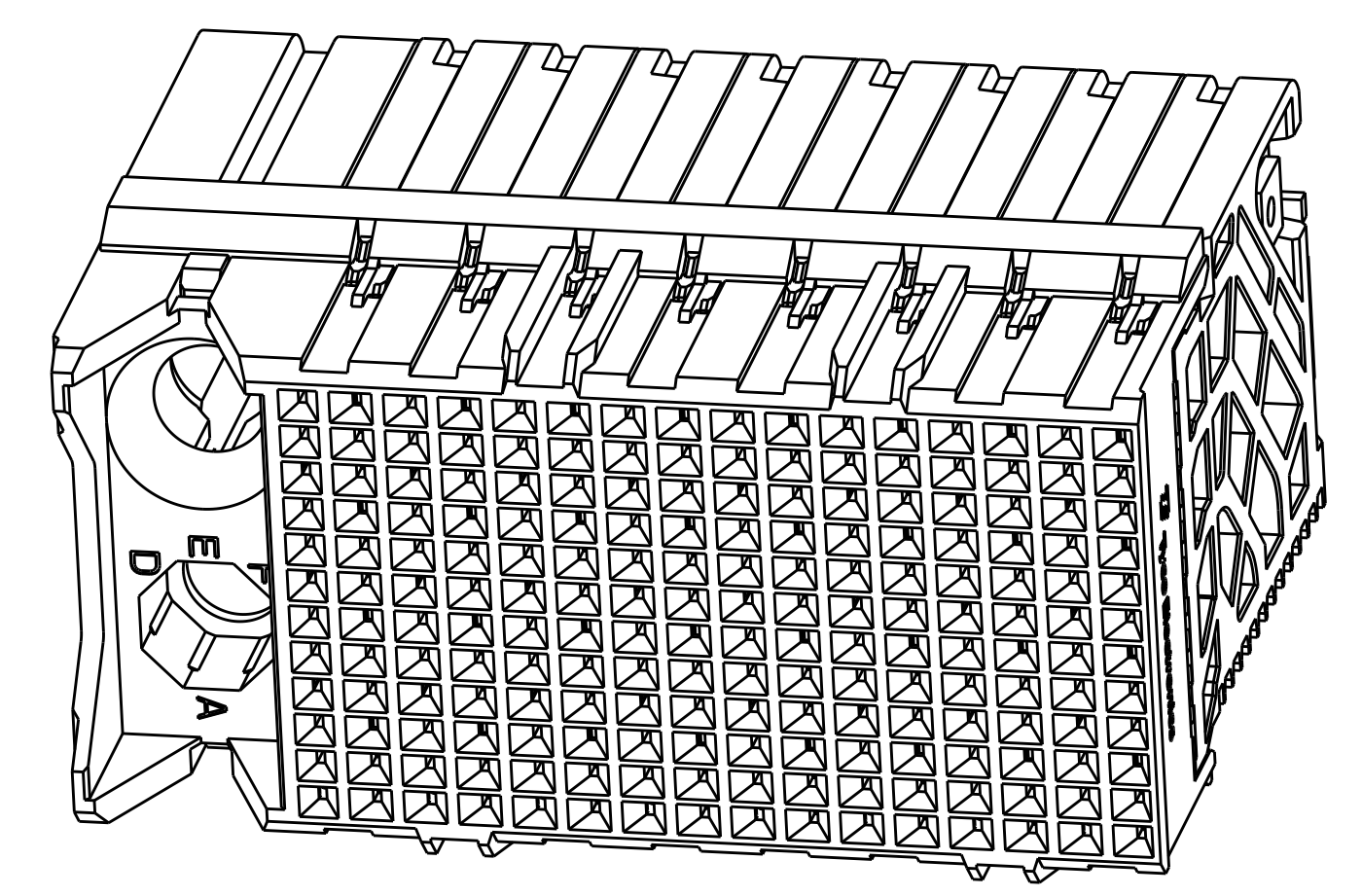
LOC	DIST	REVISIONS			
P	LTN	DESCRIPTION	DATE	DWN	APVD
B1		REVISED PER ECO-14-018036	17FEB2015	AP	DD



⚠ MATERIAL:
HOUSING: LCP, GLASS FILLED, UL94V-0.
TERMINALS: HIGH PERFORMANCE COPPER ALLOY.

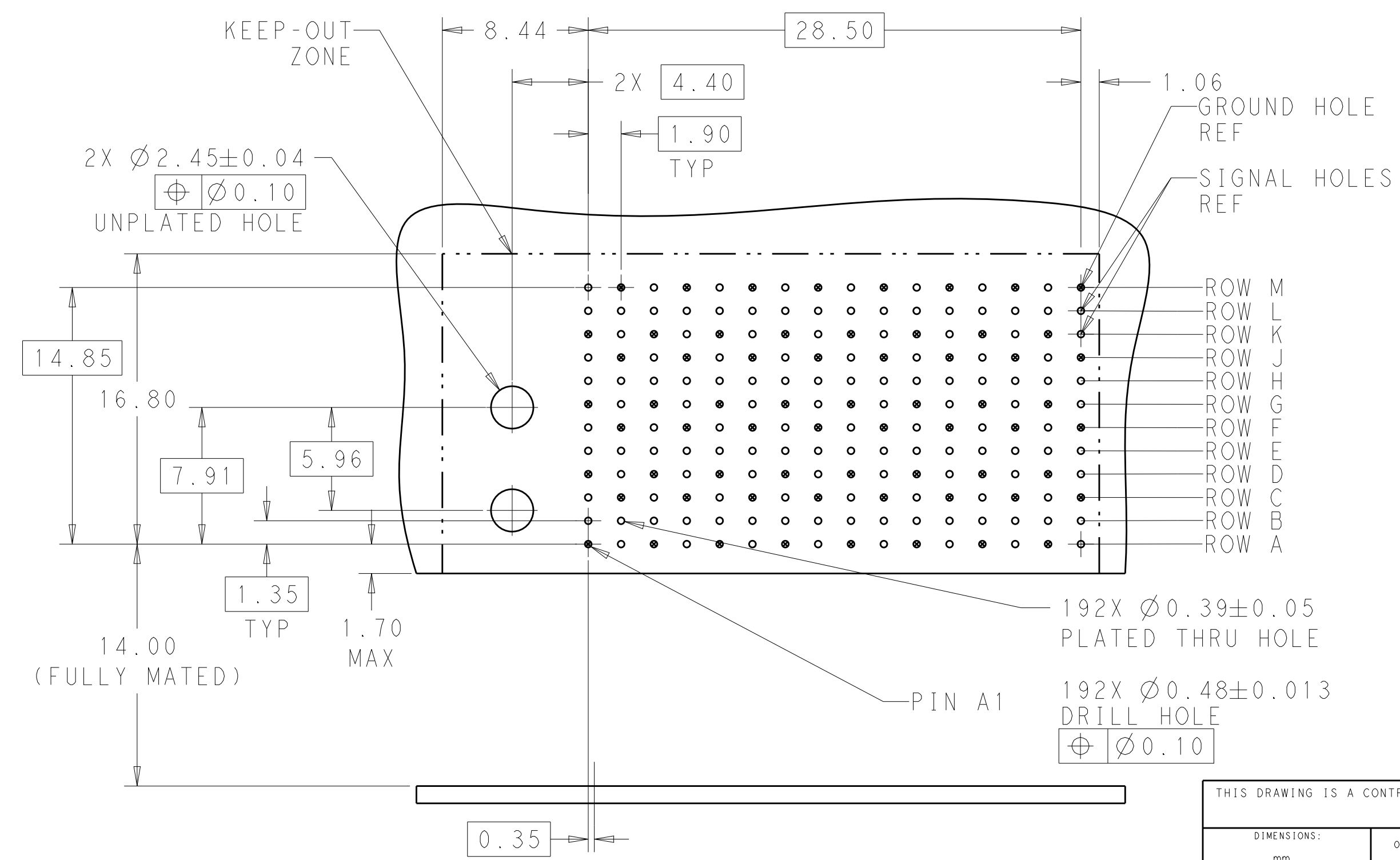
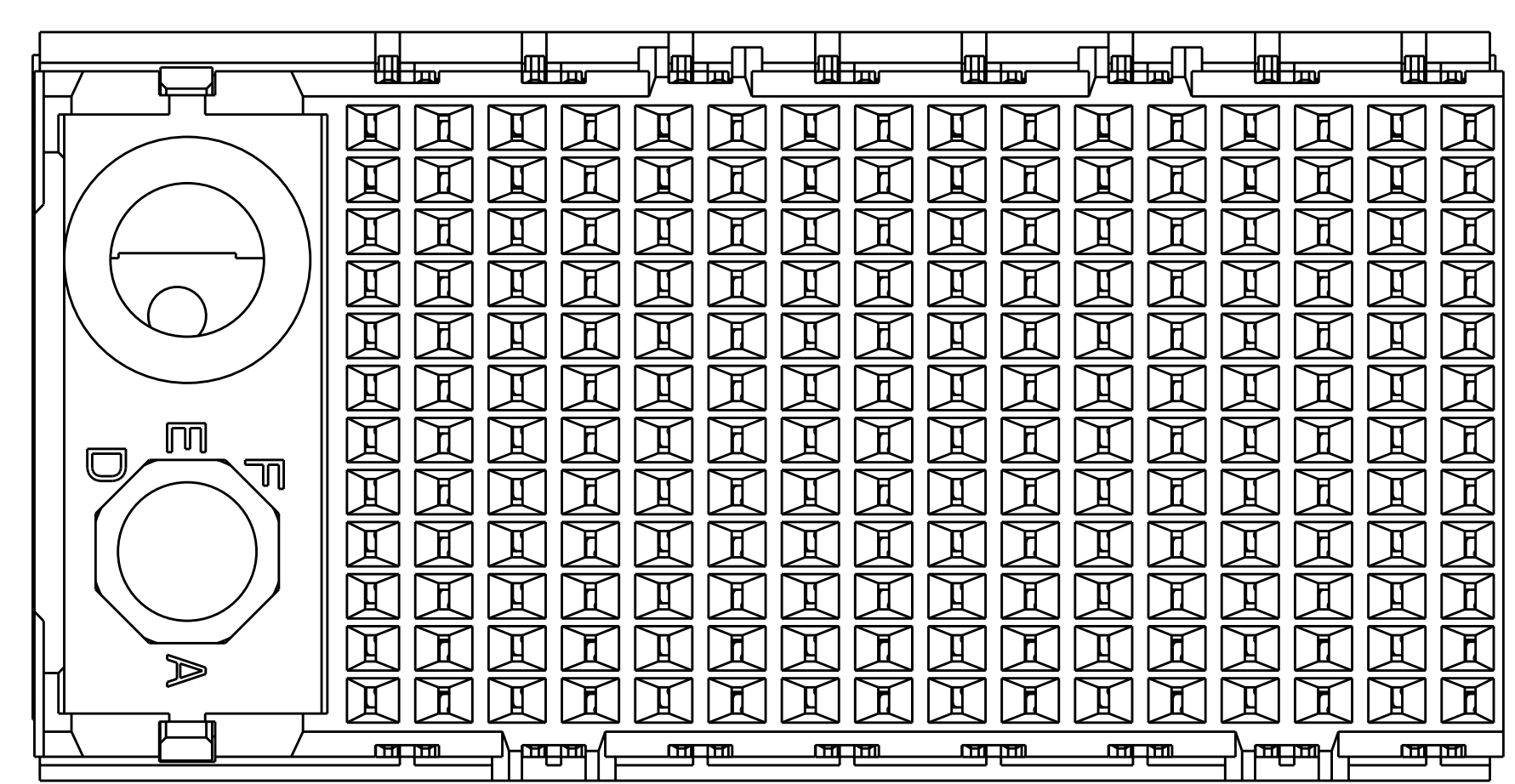
⚠ FINISH:
30µ" SELECTIVE GOLD IN CONTACT AREA. SELECTIVE TIN ON PCB TAILS, NICKEL OVERALL.

3. CONNECTORS SUPPLIED WITH MOUNTING SCREWS.



SCALE 4:1

REFER TO WWW.TE.COM FOR PRODUCT AVAILABILITY



KEY POSITION CHART	
	NONE
	A
	B
	C
	D
	E
	F
	G
	H

KEY POSITION	FINISH	PART NUMBER
H	⚠	8-2007721-1
G	⚠	7-2007721-1
F	⚠	6-2007721-1
E	⚠	5-2007721-1
D	⚠	4-2007721-1
C	⚠	3-2007721-1
B	⚠	2-2007721-1
A	⚠	1-2007721-1
NONE	⚠	2007721-1

OFFSET BETWEEN BOARD AND BACKPLANE HOLE COLUMNS

RECOMMENDED PCB LAYOUT
MIN BOARD THICKNESS 1.0

THIS DRAWING IS A CONTROLLED DOCUMENT.

DIMENSIONS: mm

TOLERANCES UNLESS OTHERWISE SPECIFIED:

0 PLC	±	
1 PLC	±0.2	
2 PLC	±0.13	
3 PLC	±	
4 PLC	±	
ANGLES	±	

MATERIAL: SEE TABLE

FINISH: SEE TABLE

THIS DRAWING IS A CONTROLLED DOCUMENT. DWN: 18MAY2011, CHK: D. DIXON, 18MAY2011, APVD: D. DIXON, 18MAY2011

NAME: IMPACT, 4 PAIR, DAUGHTERCARD 16 COLUMN, LEFT GUIDED, SIGNAL MODULE, 0.39 EYELET

SIZE: A1, CAGE CODE: 00779, DRAWING NO: 2007721, RESTRICTED TO: B1

CUSTOMER DRAWING, SCALE: 6:1, SHEET: 1 OF 1, REV: B1