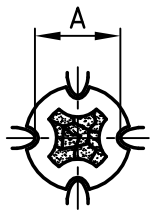
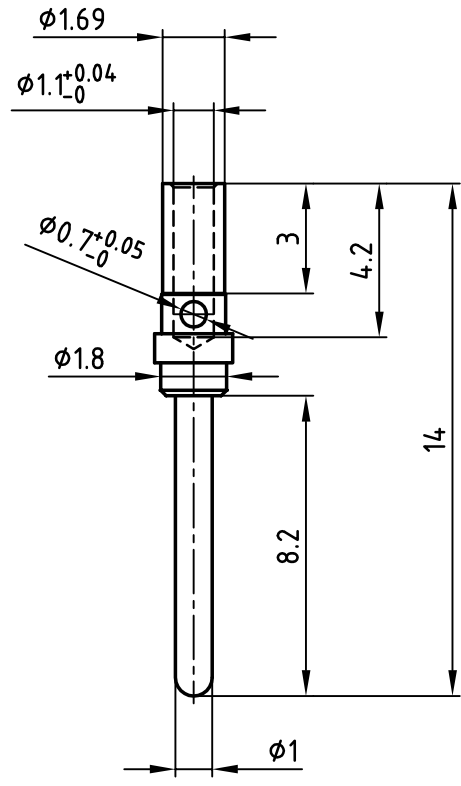


used for: D-SUB COMBINATION



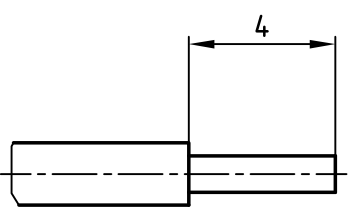
Selector settings	Crimp height A
7 for AWG 20	0.87 - 0.98
6 for AWG 22	0.77 - 0.88
5 for AWG 24	0.67 - 0.78



Plating	Part-NO.
min. 8µin HARD GOLD OVER min. 50µin NICKEL	<b>131A15019X</b>
min. 20µin HARD GOLD OVER min. 50µin NICKEL	<b>131B15019X</b>
min. 30µin HARD GOLD OVER min. 50µin NICKEL	<b>131C15019X</b>
min. 50µin HARD GOLD OVER min. 50µin NICKEL	<b>131J15019X</b>

Directive 2002/95/EC  
"RoHS"  
Compliant

**(b) STRIPPING DIMENSION**



**NOTES:**

1. MATERIAL: COPPER ALLOY
2. PLATING: SEE TABLE
- (b) 3. CRIMPING: USE CRIMP TOOL 360X10329X WITH TOOL INSERT 360X20039X  
SELECTOR SETTINGS: 7 FOR AWG 20  
6 FOR AWG 22  
5 FOR AWG 24

THIS DRAWING MAY NOT BE COPIED OR REPRODUCED IN ANY WAY, AND MAY NOT BE PASSED ON TO A THIRD PARTY WITHOUT WRITTEN PERMISSION. OWNERSHIP AND COPYRIGHT OF CONEC GmbH DO NOT ALTER CAD DRAWING BY HAND

				tolerance				scale: 5:1	
				material: SEE NOTES					
				2002	date	name		<b>SIGNAL CRIMP CONTACT</b> MALE CONTACT Wire Size 20-24	
				drawn	30.01.	Parei			
				appd.	30.01.	E. Mickenbecker			
				norm					
1 x d	Ä 3703	02.08.2010	K.H.	d-old				dwg no:	AutoCAD 2000
1 x c	Ä 2197	01.04.2005	Lehmen					<b>16K1A470A</b>	
2 x b	Ä 2177	02.03.2005	Lehmen						
rev.	description	date	name					part no:	SEE TABLE
								sh:	1/1

