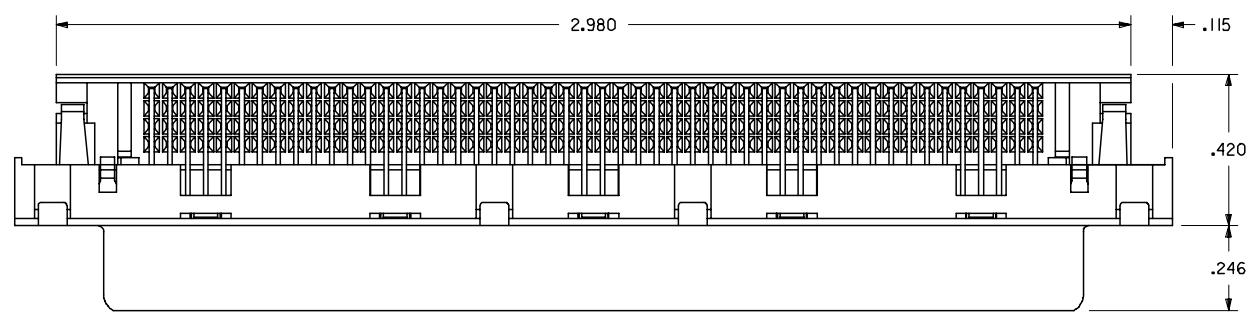
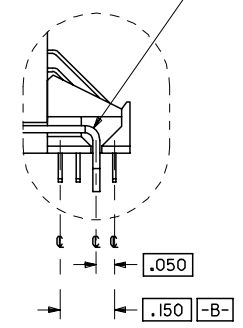


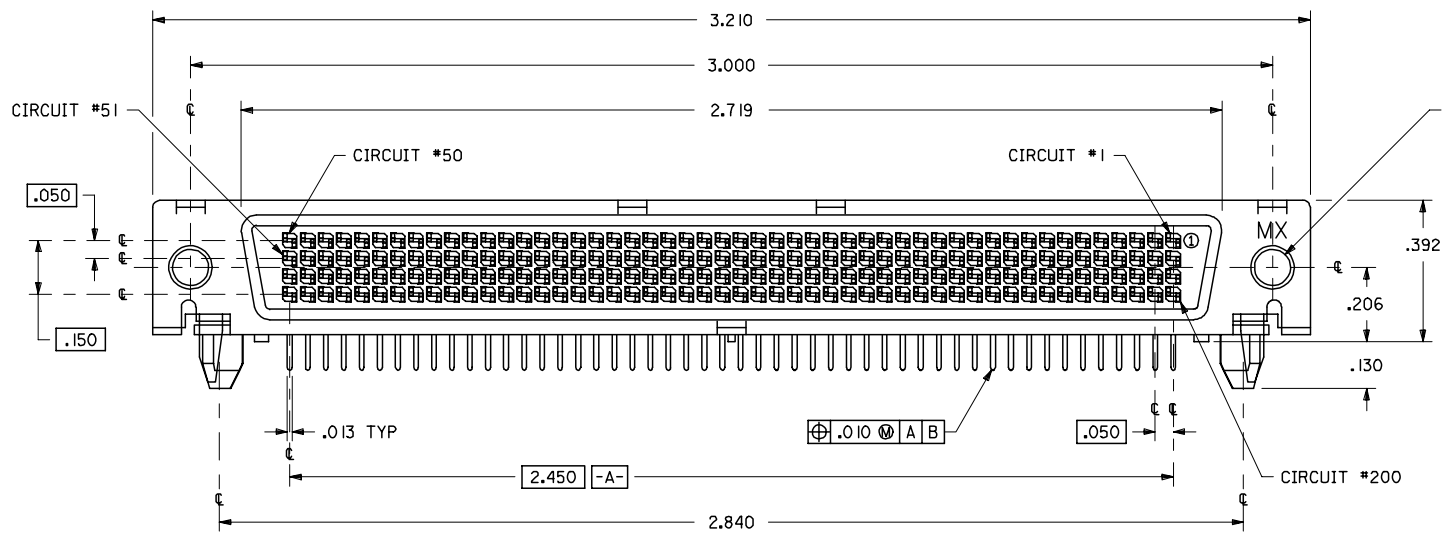
13 12 11 10 9 8 7 6 5 4 3 2 1



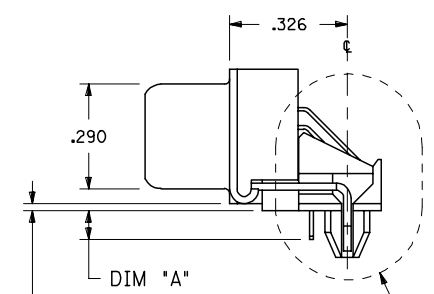
GROUNDING STRAP (2 PLCS)



PARTIAL END VIEW
(MOUNTING PEG OMITTED FOR CLARITY)



M3 THREADED INSERT (2 PLCS)



SEE "PARTIAL END VIEW" FOR SOLDER TAIL LOCATIONS

NOTES:

- MATERIALS:**
HOUSING, TAIL ALIGNER, AND INSERT-MOLDED STICKS ARE GLASS FILLED LCP (LIQUID CRYSTAL POLYMER), U.L. 94 V-0, COLOR IS BLACK; THE FEMALE TERMINALS ARE BERYLLIUM COPPER, 0.010" THICK; AND THE OUTER SHELL IS LOW-CARBON STEEL, .020" THICK.
- TERMINAL PLATING:**
30 MICROINCHES/(0.76 MICROMETER) MINIMUM OF GOLD IN SELECTIVE AREA; 100 MICRO-INCHES MINIMUM OF TIN IN SELECTIVE AREA; ALL OVER NICKEL UNDERPLATE OVERALL.
- OUTER SHELL FINISH:**
150 MICROINCHES/(3.81 MICROMETER) MINIMUM OF BRIGHT TIN; OVER 50 MICROINCHES/(3.81 MICROMETER) OF NICKEL; OVER COPPER FLASH (OPTIONAL).
- PARTS CONFORM TO MOLEX PRODUCT SPECIFICATION *PS-71718-9999.
- PACKAGING PER MOLEX SPECIFICATION *PK-70873-0299.
- SEE SHEET #2 FOR PART NUMBERS, RECOMMENDED BOARD LAYOUT AND PANEL CUT-OUT.
- PART COMPLIES WITH CLASS B OF COSMETIC SPECIFICATION PS-45499-002

NOTE FOR LEAD FREE CONVERSION:

THE PRIMARY SHIPPING CARTON WILL BE LABELED "COMPLIANT TO RoHS DIRECTIVE 2002/95/EC AND ELV ANNEX II OF DIRECTIVE 2000/53/EC". CARTONS WITHOUT THIS LABEL MAY CONTAIN PRODUCT WITH LEAD.

| | |
|-------------|-----------|
| 71718-2001 | .120±.010 |
| 71718-2000 | .079±.010 |
| ITEM NUMBER | DIM. A |

| | |
|-----|-----|
| 2 | F1 |
| 1 | H |
| SHT | REV |

| | | | | | | | |
|---|---|---|--|---|---------------------|--------------|------------------------|
| ADD NOTE 7 EC NO: UCP2006-3051 2006/07/10 DRW:MS:BARRA 2006/07/10 CHKD:DMORGAN 2006/07/11 APPR:SMILLER 2006/07/11 | DESCRIPTION .050 PITCH LFH 200 CKT RIGHT ANGLE I/O RECEPTACLE SALES ASSY | QUALITY SYMBOLS | GENERAL TOLERANCES (UNLESS SPECIFIED) | DIMENSION STYLE | SCALE | DESIGN UNITS | THIRD ANGLE PROJECTION |
| | | =0 =0 | mm INCH 4 PLACES ± --- ± --- 3 PLACES ± --- ± .010 2 PLACES ± --- ± --- 1 PLACE ± --- ± --- ANGULAR ±1/2° | INCH ONLY DRAWN BY DATE GLT 1995/05/15 CHECKED BY DATE GLT 1995/05/15 APPROVED BY DATE JWF 1995/05/15 | 4:1 | INCH | THIRD ANGLE PROJECTION |
| | | DRAFT WHERE APPLICABLE MUST REMAIN WITHIN DIMENSIONS | MATERIAL NO. SEE TABLE | MOLEX INCORPORATED | SHEET NO. 1 OF 2 | | |
| | | THIS DRAWING CONTAINS INFORMATION THAT IS PROPRIETARY TO MOLEX INCORPORATED AND SHOULD NOT BE USED WITHOUT WRITTEN PERMISSION | | | | | |

12 11 10 9 8 7 6 5 4 3 2 1

