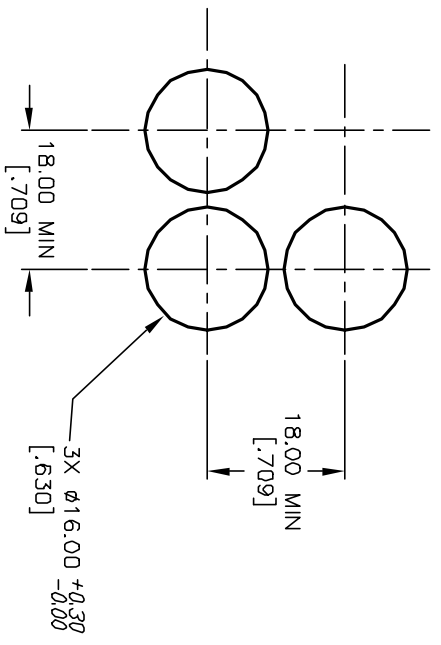
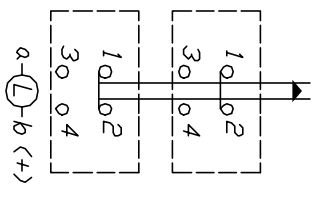


PARTS LIST			
ITEM	QTY.	PART NO.	PART DESCRIPTION
1	1	F040020	D16 EE S12
2	1	F050305	50-003-05 (WHITE TRANSPARENT)



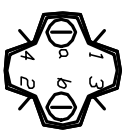
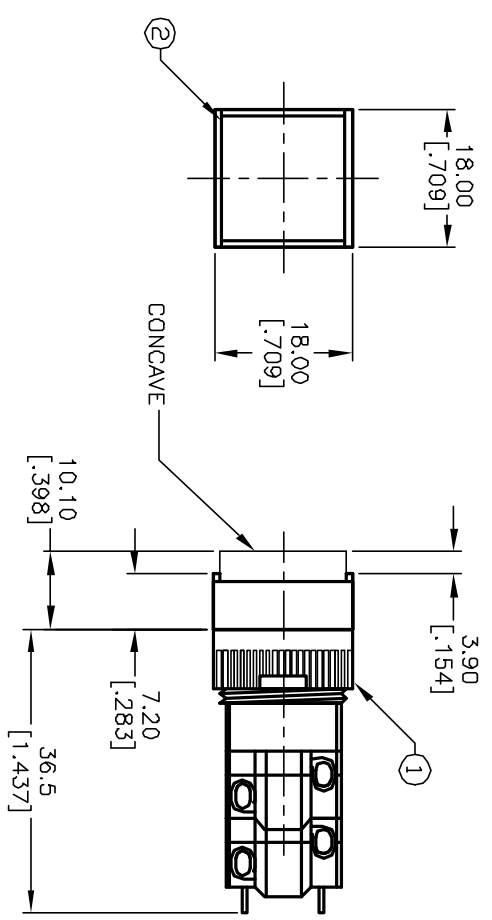
RECOMMENDED
PANEL MOUNTING



CONTACT CONFIGURATION

NOTES:

1. ALL DIMENSIONS IN MM [INCH]
2. GENERAL TOLERANCE: X.X=±0.4
X.XX=±0.25
3. TERM. NOS. FOR REFERENCE ONLY.
4. RATINGS: 5A@250V AC/ 8A@125V AC
5. TRAVEL: 3.0MM
6. MECHANICAL LIFETIME: > 2 MILLION OPERATIONS
7. LAMP VOLTAGE: 110V AC



REV.	ECN No.	DESCRIPTION	DATE	CHKD
A	12951	RELEASED FOR PRODUCTION	3/24/03	AR

TITLE	SCALE	DATE	DR	DWG	REV
D16EES120WHT	1.5:1	3/24/03	AR	XF0549P	A

E-SWITCH®

THE INFORMATION CONTAINED IN THIS DOCUMENT IS PROPRIETARY TO E-SWITCH AND IS NOT TO BE COPIED OR TRANSMITTED