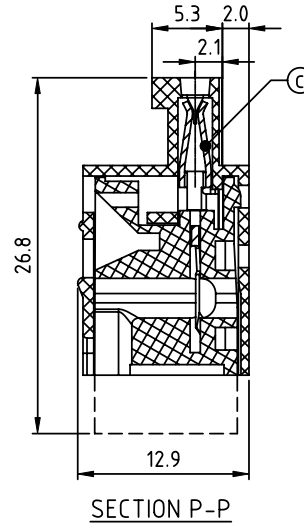
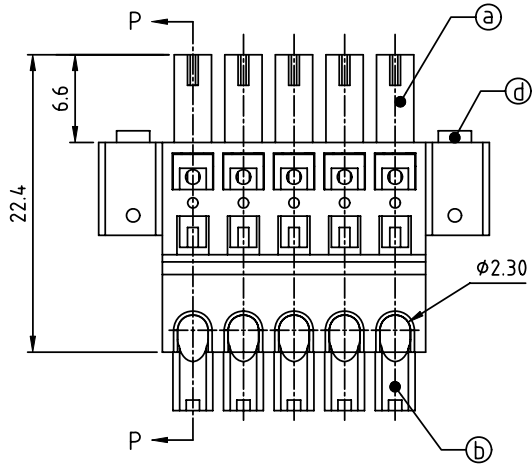
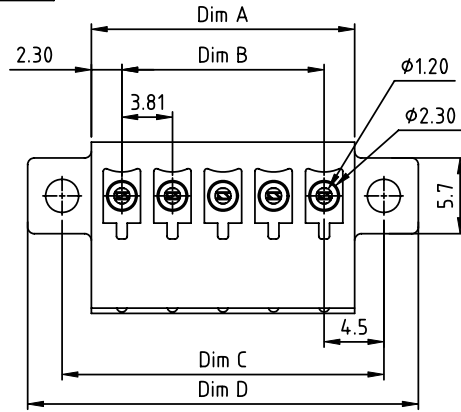


PRODUCT NUMBER	PITCH
HPxx30x200J0G	3.81 mm



Material:

- Item a Terminal body: Thermoplastic (UL94V-0)
- Item d Terminal lever: Thermoplastic (UL94V-0) Orange(RAL 2011/P)
- Item c Female contact: PhBz (CuSn) Tin plated
- Item b Flange screw: Steel M2.5 plated zinc

Electrical cULus

- Voltage rating: 300V
- Current rating: 5A
- Wire range:
 - Solid wire(AWG): 20-22
 - Stranded wire(AWG): 20-22
- Withstanding Voltage: 1.6KV
- Operating temperature: -40°C to +115°C
- Safety Approval:

N=Number of poles
 Dim A=(N-1)x3.81+4.6
 Dim B=(N-1)x3.81
 Dim C=(N-1)x3.81+9.0
 Dim D=(N-1)x3.81+14.2

PART NO.: HP xx 30 x 2 00J0 G

		Color	RoHS compliant
Solid block	0	Black (RAL9005)	(lead<4%)
No. of poles	2	Red (RAL3001/D)	In copper Alloy
02	2 poles	3 Orange(RAL2011/P)	
03	3 poles	4 Yellow(RAL1018/A)	
...	...	5 Green(RAL6018/T)	
24	24 poles	6 Blue (RAL5015/A)	
		8 Grey(RAL7035/D)	
		9 White(RAL1102)	
		C Green(RAL6018/U)	

Poles	Tolerance
2P-6P	±0.15
7P-12P	±0.20
13P-18P	±0.25
19P-24P	±0.30

mat'l. code		surface ASME Y14.5	tolerance ASME Y14.5	projection	product family TERMINAL BLOCK
ltr	ecn no	dr	date		title TERMINAL BLOCK
tolerances unless otherwise specified					
angles		X.±0.5		scale	dwg no HPxx30x200J0G
X°±1'		X.XX±0.1			
dr		EVIN ZHONG 051414			size A4
enr		EVIN ZHONG 051414			
chr		HANKE FENG 051414			
appd		SHI JUN 051414		type CUSTOMER Drawing	
sheet index	revision	A			
	sheet	1			