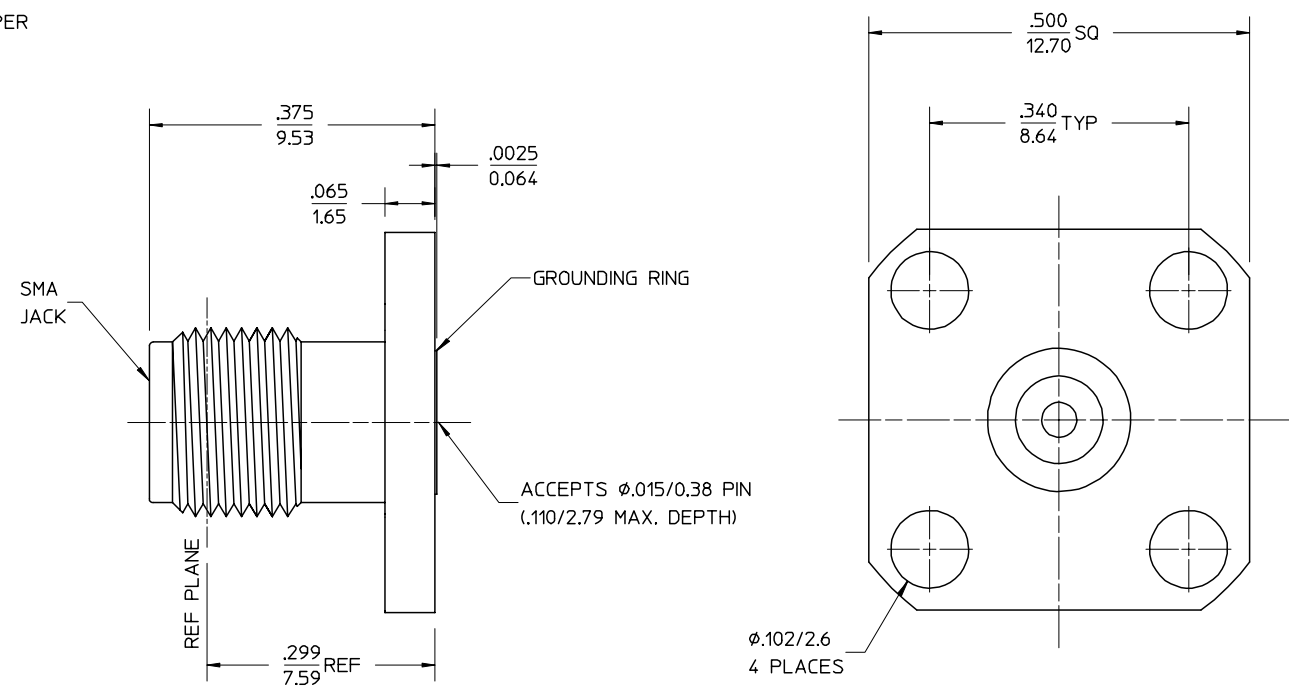


MATERIALS AND FINISHES:
 BODY STAINLESS STEEL
 PASSIVATED

 CENTER CONTACT BERYLLIUM COPPER
 PLATED GOLD

 INSULATOR TEFLON



PART # 73251-0820

MIL-STD-348, FIGURE 310-2	INTERFACE
PS-89675-2910	ELECTRO/MECH PERFORMANCE
SPECIFICATION	DESCRIPTION

CHG: NEW RELEASE	EC NO. URF-0233	DESCRIPTION
	DRWN: TEF 06/21/99	
A	CHK: DHG 06/21/99	UNLESS OTHERWISE SPECIFIED DIMS ARE INCHES AND ANGLES ARE DEGREES.
	APPR: GMH 06/21/99	1. √ 63 ALL OVER.
		2. NO CHATTER OR NON-UNIFORM SURFACE FINISH ALLOWED.
		3. PARTS TO BE FREE OF BURRS & SHARP EDGES .005 MAX BREAK.
		4. EXTERNAL THREADS TO BE ROLLED OR SINGLE POINT.
		5. DIAMETERS TO BE CONCENTRIC WITHIN .003 TIR.

UNLESS OTHERWISE SPECIFIED DIMS ARE INCHES AND ANGLES ARE DEGREES.
 1. √ 63 ALL OVER.
 2. NO CHATTER OR NON-UNIFORM SURFACE FINISH ALLOWED.
 3. PARTS TO BE FREE OF BURRS & SHARP EDGES .005 MAX BREAK.
 4. EXTERNAL THREADS TO BE ROLLED OR SINGLE POINT.
 5. DIAMETERS TO BE CONCENTRIC WITHIN .003 TIR.

QUALITY SYMBOLS	GENERAL TOLERANCES: (UNLESS SPECIFIED)	SCALE	DESIGN UNITS
MAJOR	mm INCH	—	mm <input checked="" type="checkbox"/> INCH
CRITICAL	4 PLACES ± .0005		
	3 PLACES ± .005		
	2 PLACES ± .01		
	1 PLACE ± .1		
	ANGULAR: ±2°		
	DRAFT WHERE APPLICABLE MUST REMAIN WITHIN DIMENSIONS		

DRAWN BY & DATE	EDC 02/19/99
CHECKED BY & DATE	DHG 02/19/99
APPROVED BY & DATE	GMH 02/19/99
CAD FILENAME	

THIRD ANGLE PROJECTION	DIMENSIONS: mm INCH <input checked="" type="checkbox"/> mm ONLY	1	A
TITLE: SMA JACK, RECEPTACLE, 4 HOLE FLANGE MOUNT, ACCEPTS .015 DIA PIN SMA-JR/F		SHT	REV
MATERIAL NO. SEE NOTE		REVISE ON CAD ONLY	
DRAWING NO. SD-73251-082		SHEET NO. 1 of 1	
THIS DRAWING CONTAINS INFORMATION THAT IS PROPRIETARY TO MOLEX INCORPORATED AND SHOULD NOT BE USED WITHOUT WRITTEN PERMISSION.		SIZE B	