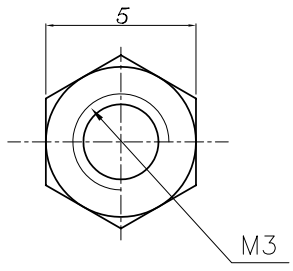
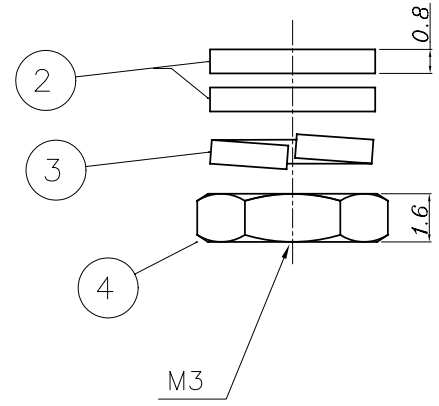
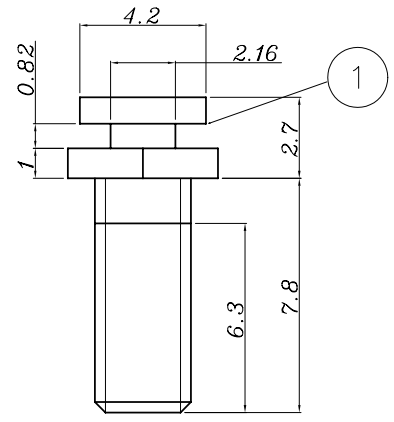


This document is the property of Amphenol Corporation and is delivered on the express condition that it is not to be disclosed, reproduced or used, in whole or in part, for manufacture or sale by anyone other than Amphenol Corporation without its prior consent, & that no right is granted to disclose or to use any information in this document.

REVISIONS				
SYM	ECN	DESCRIPTION	DATE	APPROVED
A			03/06/08	



- ① 10 LOCKING SCREWS
- ② 20 WASHERS
- ③ 10 LOCK WASHERS
- ④ 10 NUTS



Customer drawing

D-SUB TECHNICAL DATA

*Plating : 100u" min. tin over
50u" min. nickel.
delivered separately
1 P/N = 10 sets*

*MARKING:
Amphenol...(Series No.)
Commercial reference
Manufacturing date*

UNLESS OTHERWISE SPECIFIED		APPROVAL		DATE	Amphenol	
TOLERANCES		DRAWN	SUNNY LI	03/06/08		
	U.S.	METRIC	CHECKED	TH. WANG	03/06/08	TITLE Accessory for L17D53018M3X
.X	+/-	0.50	CHECKED			
.XX	+/-	0.30				
.XXX	+/-	0.20				
FRACTIONS	+/-					
ANGLES	+/-	2'				
FOR MATERIALS AND FINISHES SEE NOTES		DRAWING FILE :				
REMOVE SHARP EDGES		ANGLE OF PROJECTION				
DIMENSIONS				SIZE DRAWING NO.		
U.S.	INCHES			A4	C L17D53018M3X	REV. A
METRIC	MM	SCALE		NONE	SHEET 1 OF 1	