

NOTES:

1.0 MATERIALS:

- 1.1 HOUSING: STAINLESS STEEL PER ASTM-A582, TYPE 303.
- 1.2 CENTER CONTACT: BERYLLIUM COPPER ROD ALLOY C172, PER ASTM-B196.
- 1.3 DIELECTRIC: PTFE FLUOROCARBON PER ASTM-D1710.

2.0 PLATING:

- 2.1 HOUSING & NUT: PASSIVATED PER MIL-F-14072 AND SAE AMS QQ-P-35.
- 2.2 CENTER CONTACT: GOLD PER MIL-PRF-39012,

3.0 ELECTRICAL SPECIFICATIONS:

- 3.1 FREQUENCY RANGE: DC to 18.0 GHz
- 3.2 VSWR: 1.05+.01f(GHz) MAX.
- 3.3 OPERATING TEMPERATURE RANGE: -55°C to +125°C
- 3.4 INPUT POWER
0.5 WATTS AVG.
50 WATTS PEAK
- 3.4.1 AVERAGE INPUT POWER IS DERATED LINEARLY FROM 100% AT +25°C TO 25% AT SPECIFIED MAXIMUM AMBIENT OPERATING TEMPERATURE.
- 3.5 IMPEDANCE: 50 OHMS
- 3.6 WEIGHT: .25 Oz. MAX.

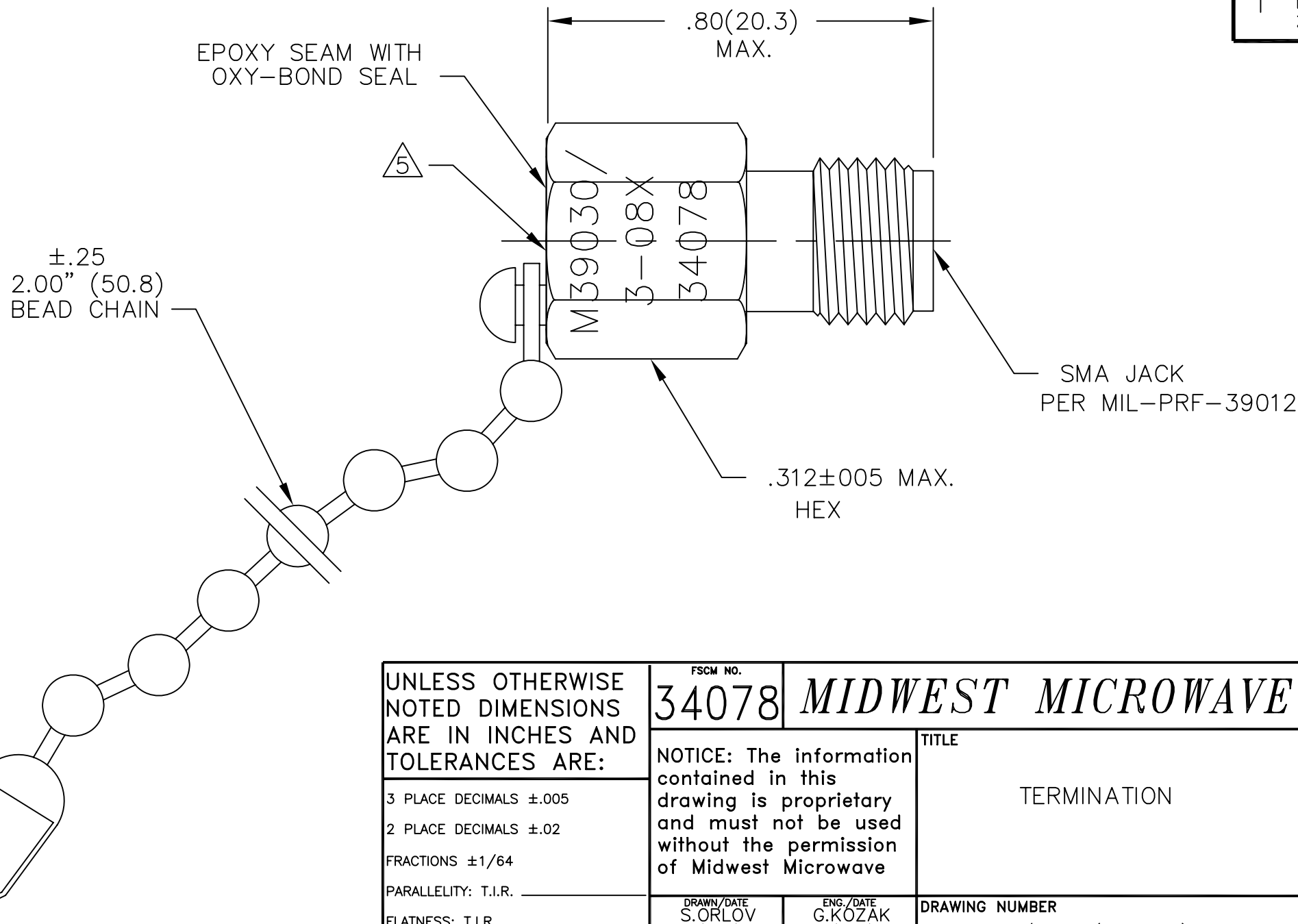
4.0 MARKING: MARK UNIT AS SHOWN (REF.: INK-09183-27-[51 or 52])

△ INK STAMP DATE CODE ON BACK FLATS AND SERIAL NUMBER ON END CAP:

XXXX — 4-DIGIT SERIAL NO.
YYWW — YEAR(YY) & WEEK(WW) OF PRODUCTION

.120/.140(3.0/3.6) DIA THRU HOLE

- 6.0 TESTING:
TEST EACH UNIT PER ATP-07840-60-02
- 7.0 DIMENSIONS IN PARENTHESIS ARE IN MILLIMETERS.



UNLESS OTHERWISE NOTED DIMENSIONS ARE IN INCHES AND TOLERANCES ARE: 3 PLACE DECIMALS ±.005 2 PLACE DECIMALS ±.02 FRACTIONS ±1/64 PARALLELITY: T.I.R. _____ FLATNESS: T.I.R. _____ CONCENTRICITY: T.I.R. _____ ANGLES AND PERPENDICULARITY: ±1'	FSCM NO. 34078	MIDWEST MICROWAVE
	NOTICE: The information contained in this drawing is proprietary and must not be used without the permission of Midwest Microwave	
TITLE TERMINATION		DRAWING NUMBER M39030/3-08(N or S)
DRAWN/DATE S.ORLOV 1/31/06		ENG./DATE G.KOZAK 1/31/06
CHECKED/DATE		APPROVED/DATE
SCALE: 5=1		SHEET 1 of 1

DATE	1/31/05
DESCRIPTION	RELEASED
REV.	1