

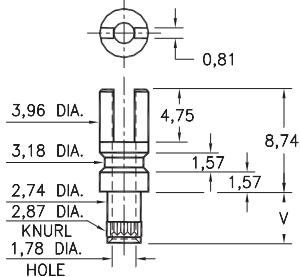
MALE PCB PINS

SOLDER TERMINALS SLOTTED

2715

2715-X-01-XX-00-00-07-0

Swage mount in 2,95 hole

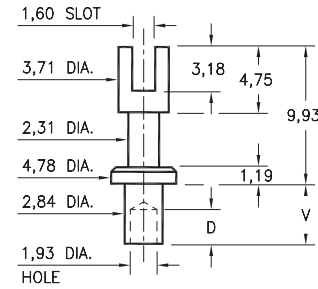


Basic Part Number	Board Thickness	Length V
2715-2	1,57	2,77
2715-3	2,39	3,58
2715-4	3,18	4,37

2809

2809-X-01-XX-00-00-07-0

Swage mount in 2,95 hole

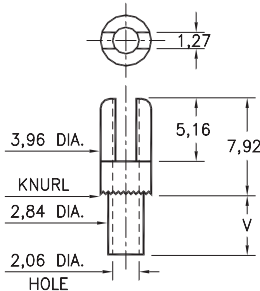


Basic Part Number	Board Thickness	Length V	Depth D
2809-1	0,79	1,98	1,73
2809-2	1,57	2,76	2,49
2809-3	2,39	3,58	2,49
2809-4	3,18	4,36	2,49

2701

2701-X-01-XX-00-00-07-0

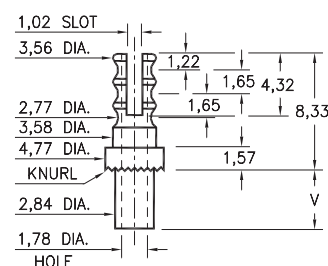
Swage mount in 2,95 hole



2808

2808-X-01-XX-00-00-07-0

Swage mount in 2,95 hole

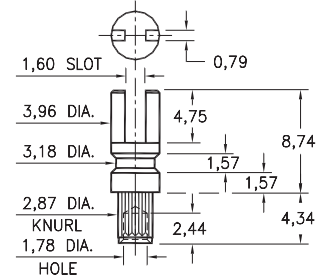


Basic Part Number	Board Thickness	Length V
2XXX-1	0,79	1,91
2XXX-2	1,57	2,67
2XXX-3	2,39	3,43
2XXX-4	3,18	4,19

2762

2762-4-01-XX-00-00-07-0

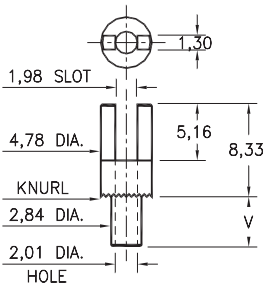
Swage mount in 2,95 hole
For a 3,18 thick board



2807

2807-X-01-XX-00-00-07-0

Swage mount in 2,95 hole

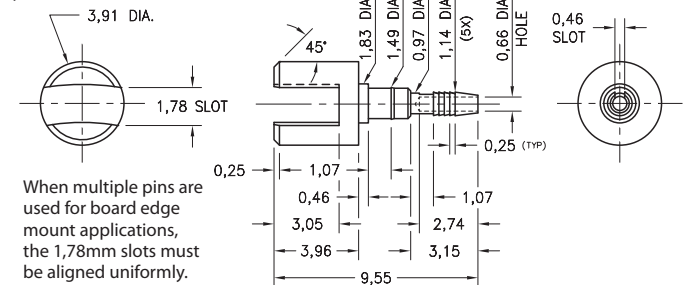


Basic Part Number	Board Thickness	Length V
2807-1	0,79	1,98
2807-2	1,57	2,77
2807-3	2,39	3,56
2807-4	3,18	4,34

3622

3622-0-32-15-00-00-03-0

Slotted compliant tail press-fit in 1,02 ± 0,08 plated hole. For 1,52 → 2,54 thick board



When multiple pins are used for board edge mount applications, the 1,78mm slots must be aligned uniformly.

SPECIFICATIONS:

Pin Material: Brass Alloy 360, 1/2 Hard
(Swage pins are annealed)

Dimensions: Millimeters

Tolerances On: Lengths: ± 0,13
Diameters: ± 0,051
Angles: ± 2°



ORDER CODE: **XXXX - X - XX - XX - 00 - 00 - 07 - 0**

BASIC PART #

SPECIFY PIN FINISH:

Part #3622 plating ONLY

- 01 5,08µm TIN/LEAD OVER NICKEL
- 15 0,25µm GOLD OVER NICKEL (RoHS)
- 80 5,08µm TIN OVER NICKEL (RoHS)
- 44 7,62µm SILVER OVER COPPER (RoHS)
- 50 7,62µm ELECTRO-SOLDER (60/40 SnPb)

