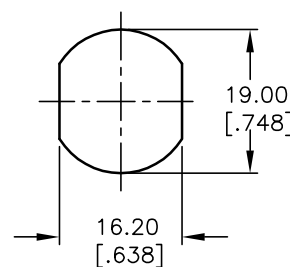
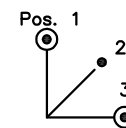


NOTES:

1. ALL DIMENSIONS IN MM [INCH]
2. GENERAL TOLERANCE: X.X=±0.4  
X.XX=±0.25
3. TERM. NOS. FOR REF. ONLY
4. CONTACT RATING: 4A @125VAC/28VDC, 2A @250VAC
5. DIELECTRIC STRENGTH: 1KV RMS min. at sea level
6. ELECTRICAL LIFE: 10,000 make-and-break cycles at full load.
7. MATERIALS:  
 CONTACTS: Silver Plated CU (Q Contact material)  
 TERMINALS: GOLD Plated Cu (Q Contact material)  
 MOUNTING NUT: Nickel Plated zinc alloy  
 CONTACT SPRING: Piano Wire  
 KEYS (2): Brass  
 LOCK: Bright NI plated zinc alloy with NI facing  
 TUMBLER Mechanism: 4-disc tumbler cylinder.
8. ▲ DENOTES CRITICAL PARAMETER.



RECOMMENDED PANEL LAYOUT



CIRCUIT: SP (45° INDEXING)  
CONTACT CONFIGURATION

SWITCH FUNCTION		
CONNECTED TERMINAL #		
POS. 1	POS. 2	POS. 3
8-1	1-2	2-3

LEGEND

- =Detent Positions (45° or 90°)
- ⊙ =Key pull possible in these positions

**E-SWITCH®**

TITLE					K0130E				
SCALE	1:1	DATE	10/10/03	DR	AR	DWG	K200214	REV	A

A	13517	RELEASED FOR PRODUCTION	10/10/03	AR
REV.	ECN No.	DESCRIPTION	DATE	CHKD

THE INFORMATION CONTAINED IN THIS DOCUMENT IS PROPRIETARY TO E-SWITCH AND IS NOT TO BE COPIED OR TRANSFERRED