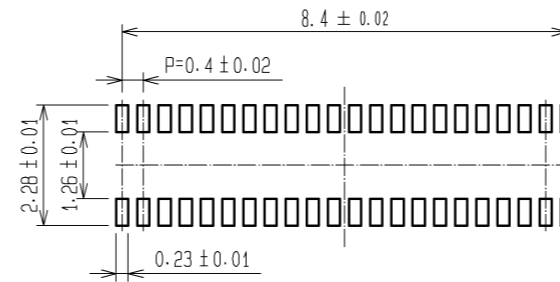
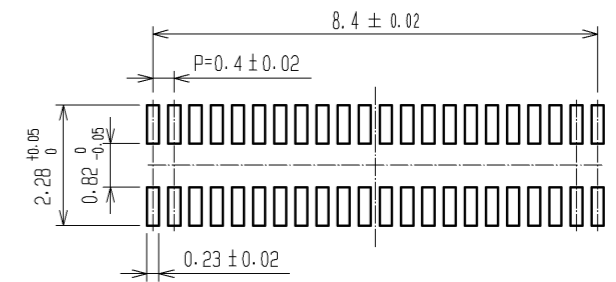


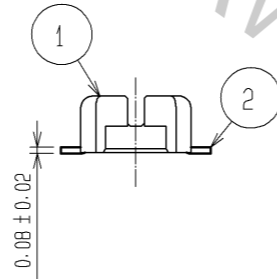
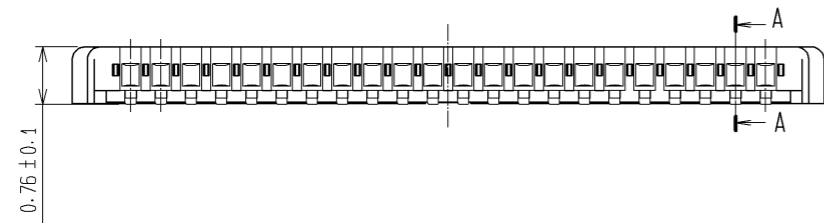
RECOMMENDED METAL MASK
OPENING PATTERN



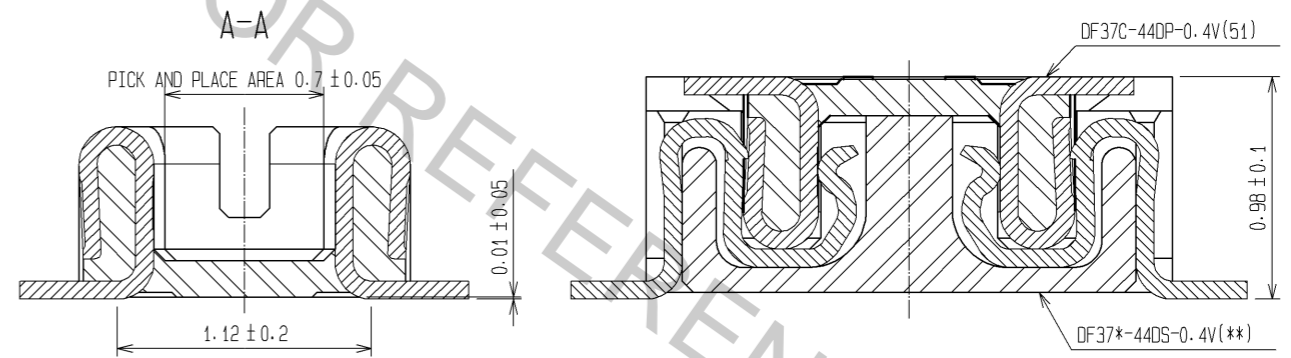
RECOMMENDED PATTERN



RECOMMENDED SOLDER PASTE THICKNESS: 120#m



ENGAGEMENT FIGURE



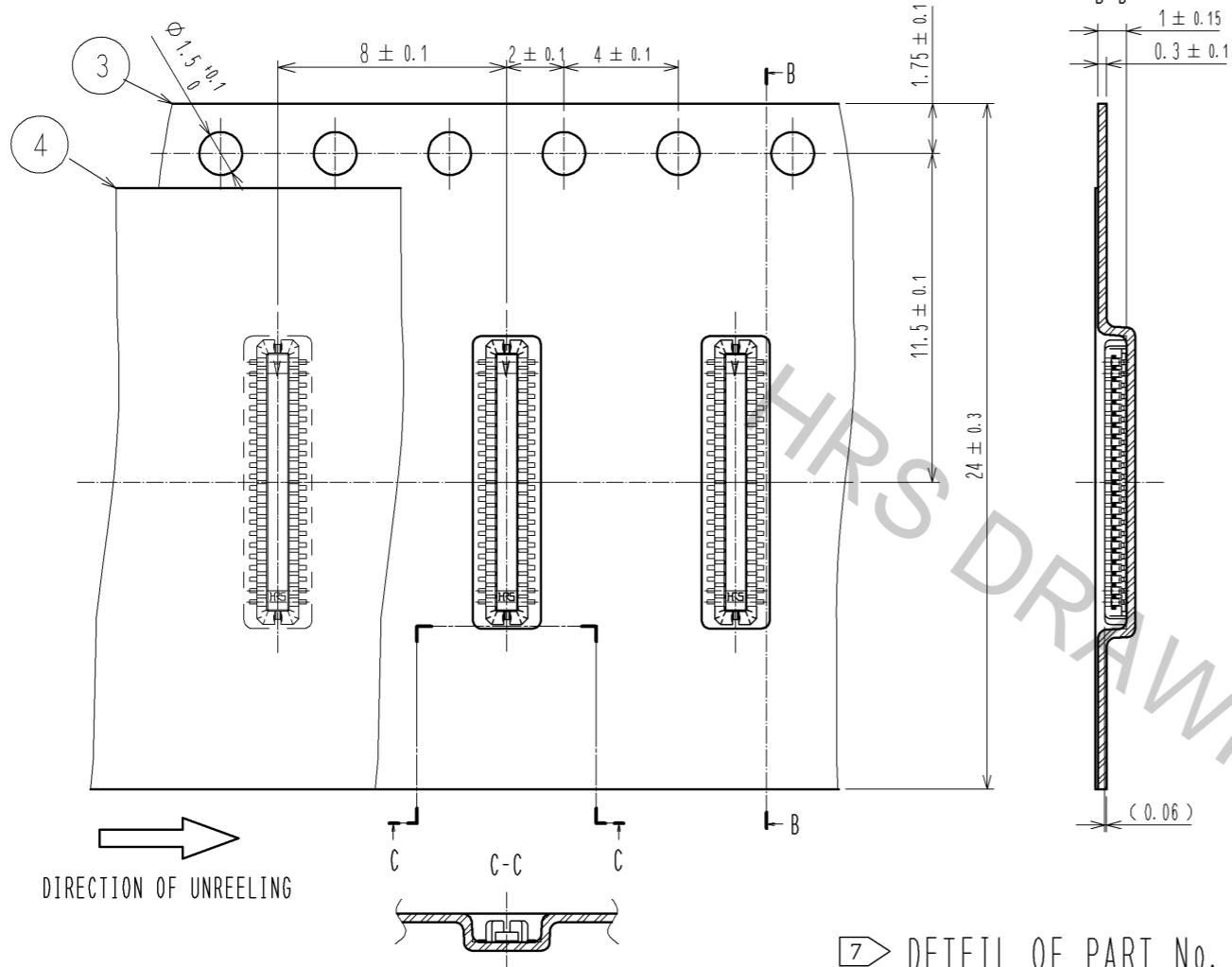
NOTE 1. ALL LEADS CO-PLANARITY SHALL BE 0.1 mm MAX.

- 2 CONTACT PLATING SPECIFICATIONS.
 CONTACT AREA : GOLD 0.05 μm MIN
 SMT LEAD : GOLD 0.05 μm MIN
 UNDER PLATING : NICKEL 1 μm MIN
 (SURFACE : SEALING)

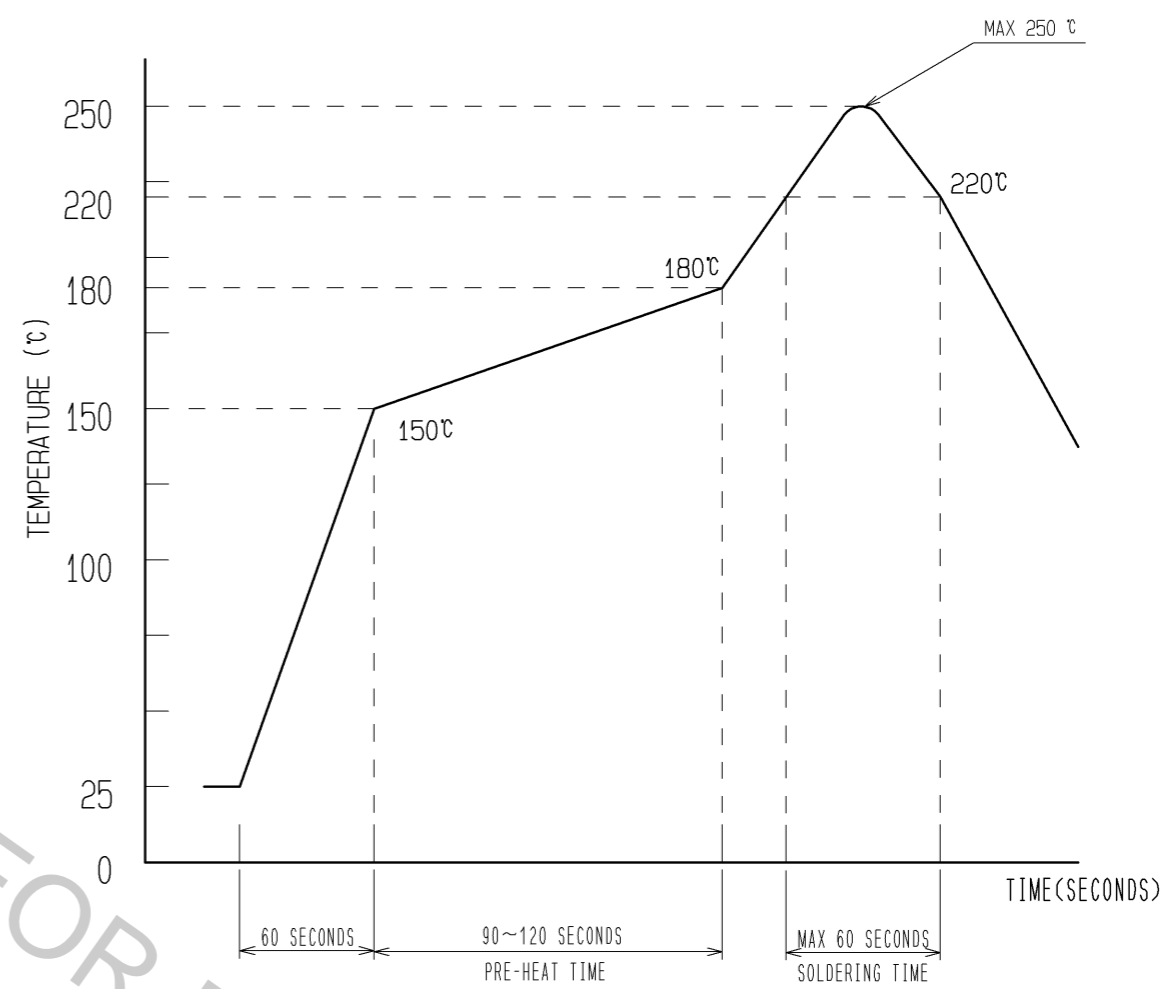
3	PS	CLEAR(EMBOSSED COVER TAPE)	6	PS	CLEAR, REINFORCING COLLAR
2	PHOSPHOR BRONZE	2	5	PS	PLASTIC REEL(BLACK)
1	LCP	UL94V-0, BLACK	4	POLYESTER	CLEAR(TOP COVER TAPE)
NO.	MATERIAL	FINISH, REMARKS	NO.	MATERIAL	FINISH, REMARKS

UNITS mm		SCALE 10:1	COUNT △	DESCRIPTION OF REVISIONS	DESIGNED	CHECKED	DATE
APPROVED : KH. IKEDA 12.10.03				DRAWING NO. EDC3-336264-01			
CHECKED : TS. MIYAZAKI 12.10.03				PART NO. DF37C-44DP-0.4V(51)			
DESIGNED : RT. SHIMIZU 12.09.28				CODE NO. CL684-3089-3-51			
DRAWN : RT. SHIMIZU 12.09.28				△ 1/2			

EMBOSSED CARRIER TAPE PACKAGING (FREE SIZE)



RECOMMENDED REFLOW TEMPERATURE PROFILE USING LEAD-FREE SOLDER PASTE.

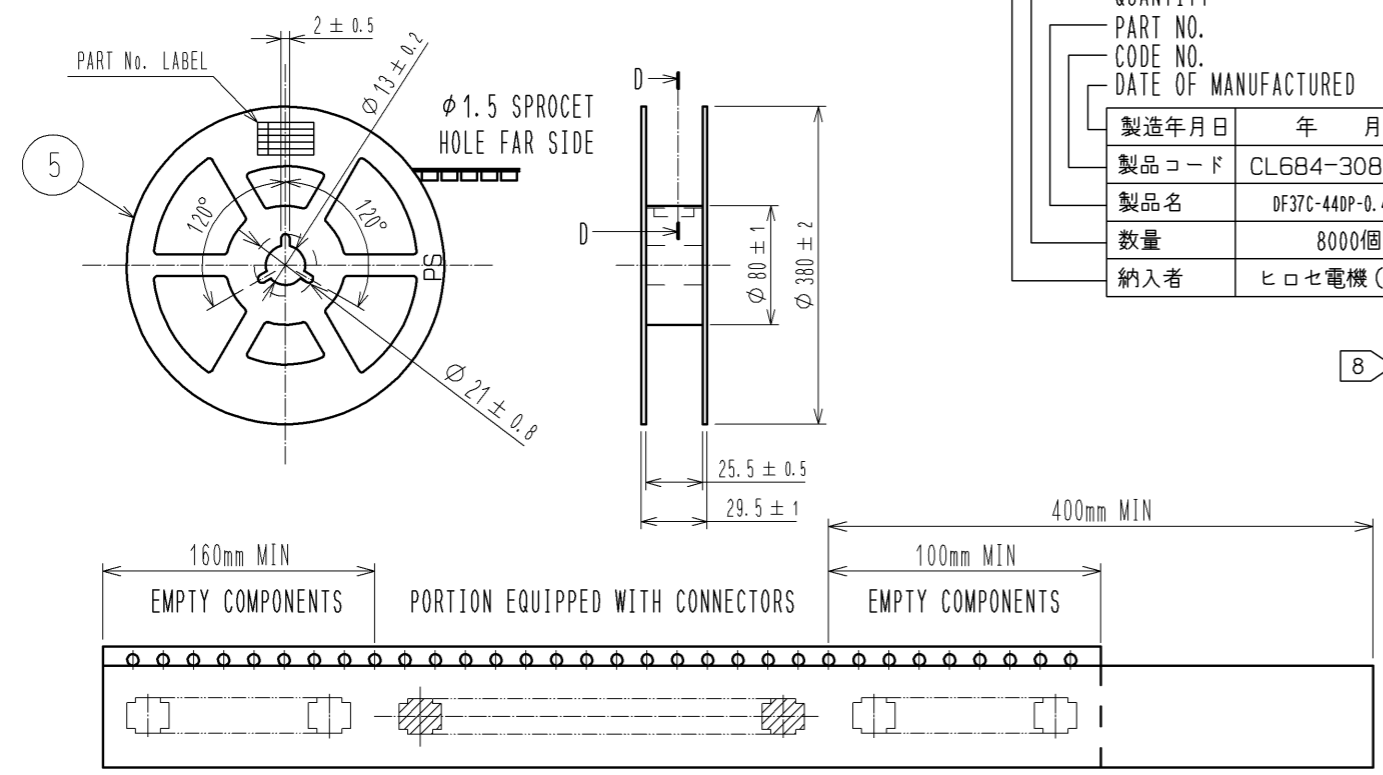


DETAIL OF PART No. LABEL

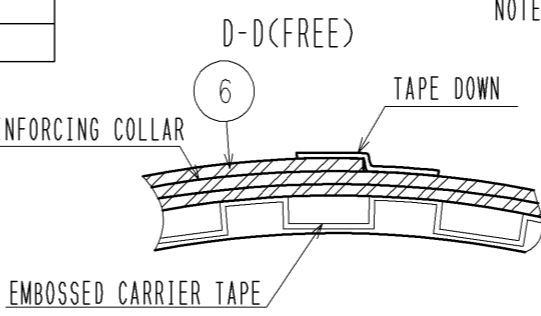
SUPPLIER	QUANTITY	PART NO.	CODE NO.	DATE OF MANUFACTURED
製造年月日	年 月 日	製品コード	CL684-3089-3-51	製品名
DF37C-44DP-0.4V(51)	数量	8000個	納入者	ヒロセ電機(株)

- 1) REFLOW TIME
REFLOW METHOD: IR REFLOW
NUMBER OF REFLOW CYCLES: 2 CYCLES MAX.
DURATION ABOVE 220 °C: 60 SEC. MAX.
(PEAK TEMPERATURE: 250°C MAX.)
- 2) PRE-HEAT TIME
PRE-HEAT TEMPERATURE(MIN) :150 °C
PRE-HEAT TEMPERATURE(MAX) :180 °C
PRE-HEAT TIME : 90~120 sec.

STYLE AND DIMENSION OF REEL (FREE SIZE)



- NOTES
- 3) THIS TEMPERATURE PROFILE IS PER THE CONDITIONS SHOWN ABOVE. ADDITIONAL FACTORS, SUCH AS SOLDER PASTE TYPE, PCB SIZE AND OTHER MOUNTED COMPONENTS COULD AFFECT THE PROFILE. THEREFORE, A THOROUGH EVALUATION OF MOUNTING CONDITION IS REQUIRED PRIOR TO PRODUCTION. TEMPERATURE IS MEASURED AT CONTACT LEAD.
 - 4. PER REEL 8000 CONNECTORS.
 - 5. THE DIMENSIONS IN PARENTHESES ARE FOR REFERENCE.
 - 6) REFER TO JIS C 0806-3 OR IEC 60286-3 (PACKING OF COMPONENTS FOR AUTOMATIC HANDLING)
 - 7) DETAIL OF PART NO. LABEL IS WRITTEN IN JAPANESE.
 - 8) AFTER FINISHING THE REELING, COVER THE SURFACE WITH 2 METERS OF REINFORCING COLLAR AND THE DOWN AT THE END.



HRS	DRAWING NO.	EDC3-336264-01
	PART NO.	DF37C-44DP-0.4V(51)
	CODE NO.	CL684-3089-3-51
		△ 2/2