

Technology to Inspire Innovation

# ***Preferred Connector Products***

# **JAE**



***JAE Electronics, Inc.***

***For Additional Information Visit [www.jae-connector.com](http://www.jae-connector.com)***

**J**apan Aviation Electronics Industry, Ltd. (JAE) is an international manufacturer and supplier of electronic components and systems. For over four decades, JAE has provided the electronics industry with solutions to complex design requirements. Since its founding, the Company has strived to contribute to society through market-driven, technology-based global business operations under the philosophy: "Technology to Inspire Innovation."

With worldwide and world-class manufacturing certified to ISO 9001 and QS 9000, JAE has made the commitment to meet the global requirements of our customer. In addition to a network of state of the art manufacturing facilities, JAE has technical service offices located around the world, staffed with experts in connector design and application.

This catalog contains a select overview of JAE Connector Products. For in-depth information on our complete product line, and information on new developments, visit JAE's online catalog at [www.jae-connector.com](http://www.jae-connector.com).

Innovative design, quality oriented manufacturing, commitment to our customers and sensitivity to the environment assures JAE's leadership position in the 21<sup>st</sup> century.

## Table of Contents

| Product Series                 | Contact Spacing                      | Pages   |
|--------------------------------|--------------------------------------|---------|
| <b>SOCKETS/MEMORY PRODUCTS</b> |                                      |         |
| PCMCIA                         |                                      |         |
| JC22.....                      | 1.27mm (.050").....                  | 5       |
| COMPACT FLASH                  |                                      |         |
| JC26C2.....                    | 1.27mm (.050").....                  | 6 - 7   |
| JC26E.....                     | 1.27mm (.050").....                  | 8       |
| JC26F.....                     | 1.27mm (.050").....                  | 9       |
| PCI EXPRESS MINI CARD          |                                      |         |
| MM60.....                      | 0.8mm (.031").....                   | 10      |
| EXPRESSCARD                    |                                      |         |
| PX10/11.....                   | 1.0mm (.039").....                   | 11 - 12 |
| PX20/22.....                   | 1.0mm (.039") / 0.635mm (.025")..... | 13 - 14 |
| SMART/SIM CARD                 |                                      |         |
| SF2.....                       | 2.54mm (.100").....                  | 15      |
| SF3.....                       | 2.54mm (.100").....                  | 16      |
| SF6.....                       | 2.54mm (.100").....                  | 17      |
| SF7.....                       | 2.54mm (.100").....                  | 18      |
| SF7 (Slim).....                | 2.54mm (.100").....                  | 19      |
| SF9.....                       | 2.54mm (.100").....                  | 20      |
| SECURE DIGITAL CARD            |                                      |         |
| SG5.....                       | 2.50mm (.098").....                  | 21      |
| MINI SECURE DIGITAL CARD (SD)  |                                      |         |
| ST4.....                       | 1.1mm (.043").....                   | 22      |
| SC1.....                       | 2.50mm (.098").....                  | 23      |
| MICRO SD/TRANSFLASH™           |                                      |         |
| ST1.....                       | 1.1mm (.043").....                   | 24      |
| ST2.....                       | 1.1mm (.043").....                   | 25      |

## **BOARD-TO-BOARD CONNECTOR PRODUCTS**

|                       |                     |         |
|-----------------------|---------------------|---------|
| <b>BOARD-TO-BOARD</b> |                     |         |
| AA03.....             | 0.40mm (.020")..... | 26      |
| WA6.....              | 0.40mm (.020")..... | 27      |
| WH1.....              | 0.40mm (.020")..... | 28      |
| AA01A.....            | 0.50mm (.020")..... | 29      |
| IL-312.....           | 0.50mm (.020")..... | 30      |
| WR.....               | 0.50mm (.020")..... | 31 - 32 |
| WB3.....              | 0.50mm (.020")..... | 33      |
| IL-WX.....            | 0.80mm (.031")..... | 34      |
| KX14/15.....          | 0.80mm (.031")..... | 35 - 36 |
| PM1.....              | 0.80mm (.031")..... | 37      |
| WM1.....              | 1.00mm (.039")..... | 38      |
| WM2.....              | 1.00mm (.039")..... | 39      |
| TX24/TX25.....        | 1.27mm (.050")..... | 40      |

## Table of Contents

| Product Series                           | Contact Spacing      | Pages   |
|--|----------------------|---------|
| <b>BOARD-TO-BOARD CONNECTOR PRODUCTS</b> |                      |         |
| WIRE-TO-BOARD                            |                      |         |
| PCB-TO-FPC/FFC                           |                      |         |
| FB3.....                                 | 0.30mm (.012").....  | 41      |
| FB5.....                                 | 0.30mm (.012").....  | 42      |
| FB6.....                                 | 0.30mm (.012").....  | 43      |
| FF02.....                                | 0.30mm (.012").....  | 44      |
| FF02S.....                               | 0.30mm (.012").....  | 45      |
| FB8.....                                 | 0.30mm (.012").....  | 46      |
| FA5.....                                 | 0.50mm (.020").....  | 47      |
| FF03.....                                | 0.50mm (.020").....  | 48      |
| IL-FPR.....                              | 0.50mm (.020").....  | 49      |
| PCB-TO-CABLE/FPC                         |                      |         |
| FI-J.....                                | 0.40mm (.016").....  | 50 - 51 |
| FI-R.....                                | 0.50mm (.020").....  | 52 - 53 |
| FI-X.....                                | 1.00mm (.039").....  | 54 - 55 |
| FI.....                                  | 1.25mm (.049").....  | 56 - 58 |
| PCB-TO-CABLE                             |                      |         |
| DX2/3.....                               | 0.80mm (.031").....  | 59      |
| FI-E.....                                | 1.00mm (.039").....  | 60 - 61 |
| CN10.....                                |                      | 62 - 63 |
| CV10.....                                |                      | 64      |
| IL-Z.....                                | 1.25mm (.049").....  | 65 - 66 |
| IL-S.....                                | 2.00mm (.079").....  | 67 - 68 |
| LY.....                                  | 2.00mm (.079").....  | 69      |
| KD10/20.....                             | 2.00mm (.079").....  | 70      |
| IL-G.....                                | 2.50mm (.098").....  | 71      |
| <b>INPUT/OUTPUT CONNECTOR PRODUCTS</b>   |                      |         |
| PCB-TO-CABLE                             |                      |         |
| DD1.....                                 | 0.50mm (.020").....  | 72 - 73 |
| DD2.....                                 | 0.50mm (.020").....  | 74 - 75 |
| DG1.....                                 | 0.50mm (.020").....  | 76      |
| RA1.....                                 | 0.50mm (.020").....  | 77      |
| RC1.....                                 | 0.50mm (.020").....  | 78      |
| DA1.....                                 | 0.60mm (.024").....  | 79      |
| DE1.....                                 | 1.27mm (.050").....  | 80      |
| TX20A.....                               | 1.27mm (.050").....  | 81      |
| DV2.....                                 | 1.905mm (.075")..... | 82 - 84 |
| CIRCULAR                                 |                      |         |
| JN1.....                                 |                      | 85 - 86 |
| JN2.....                                 |                      | 87 - 88 |
| JB5.....                                 |                      | 89      |

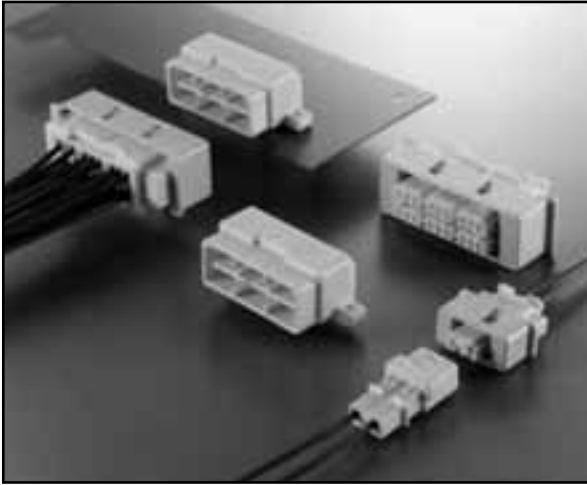
## Table of Contents

| <i>Product Series</i>                      | <i>Contact Spacing</i> | <i>Pages</i> |
|--|------------------------|--------------|
| <br><b>INPUT/OUTPUT CONNECTOR PRODUCTS</b> |                        |              |
| <b>CIRCULAR</b>                            |                        |              |
| JL04V .....                                |                        | 90 - 91      |
| JL05 .....                                 |                        | 92 - 93      |
| JB1 .....                                  |                        | 94 - 95      |
| SRCN .....                                 |                        | 96 - 97      |
| N/MS .....                                 |                        | 98 - 99      |
| <br><b>FIBER OPTIC PRODUCTS</b>            |                        |              |
| FO-FC .....                                |                        | 100          |
| FO-EX .....                                |                        | 101          |
| <br><b>AUTOMOTIVE CONNECTOR PRODUCTS</b>   |                        |              |
| <b>PCB-TO-CABLE</b>                        |                        |              |
| MX34 .....                                 | 1.1mm (.043") .....    | 102          |
| MX7 .....                                  | 2.30mm (.091") .....   | 103          |
| IL-AG7 .....                               | 2.50mm (.098") .....   | 104          |
| MX17 .....                                 | 2.50mm (.098") .....   | 105 - 106    |
| MX23A .....                                | 2.50mm (.098") .....   | 107 - 108    |
| MX10 .....                                 | 2.50mm (.098") .....   | 109          |
| MX5 .....                                  | 3.00mm (.118") .....   | 110          |
| <br><b>PCB-TO-CABLE/CABLE-TO-CABLE</b>     |                        |              |
| IL-AG5 .....                               | 2.50mm (.098") .....   | 111          |
| IL-AG6 .....                               | 2.50mm (.098") .....   | 112          |
| MX9 .....                                  | 3.50mm (.138") .....   | 113          |
| MX25 .....                                 | 6.7mm (2.64") .....    | 114          |
| MX36 .....                                 | 2.50mm (.098") .....   | 115          |
| <br><b>CABLE-TO-CABLE</b>                  |                        |              |
| IL-AG9 .....                               | 2.50mm (.098") .....   | 116 - 118    |
| MX19 .....                                 | 2.50mm (.098") .....   | 119          |

- All JAE connector products shown in this catalog are lead free.
- We reserve the right to modify designs in order to improve quality, keep pace with technological advancements or meet particular requirements in production.
- Products shown in this catalog are made for the applications specified. However, if the above-mentioned products are to be used in aerospace devices, marine cable-connection devices, atomic power control systems, medical equipment for life-support systems, or any other specific application requiring extremely high reliability, please contact JAE for further information. Recommended Applications: Computers, Office Machines, Measuring Devices, Telecommunications Devices (Terminals, Mobile Devices) AV Devices, Household Applications, FA Devices, etc.
- Refer to end of catalog for alphabetical index of products.

# MX9 SERIES CONNECTORS

Board-to-Cable Connectors • 7.0mm (.276") Cable-to-Cable Connectors



## FEATURES

- Reliable box contact designed with overstress prevention feature
- Socket contacts have dual points of contact to assure stable electrical continuity
- Conductor and insulation crimps assure mechanical integrity
- Socket contacts are secured in the insulator with integral lances to avoid damage and assure reliability
- Multiple keying arrangements afford maximum versatility
- A spring loaded in the collar housing provides tactile and audible assurance of mating
- Selective gold plating on contacts assures a cost effective and electrical connection
- Positive locking mechanism and polarization assure proper mating
- Mating lever design provides increased vibration resistance and prevents accidental separation

.....

This advanced automotive connector series is designed specifically to meet the stringent reliability standards associated with inflatable safety restraints and engine control units.

## GENERAL SPECIFICATIONS

|                                 |   |
|---------------------------------|---|
| Number of Contacts              | 2 (cable-to-cable)<br>18 (cable-to-board)             |
| Contact Spacing                 | 7.0mm (.276") 2 position<br>3.5mm (.138") 18 position |
| Current Rating                  | 5 Amp per contact                                     |
| Dielectric Withstanding Voltage | 1000 VAC r.m.s. (for one minute)                      |
| Insulation Resistance           | 100 megohms min.                                      |
| Contact Resistance              | 10 milliohms max.                                     |
| Operating Temperature           | -40°C to +85°C  |
| Applicable PCB Thickness        | 1.6mm (.063")   |

## Applicable Wire (Stranded)

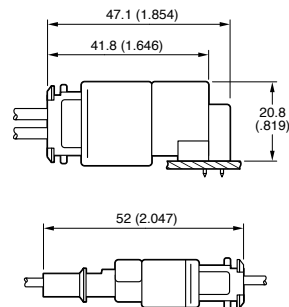
| Contact Type                 | Signal                                     | Power                                      |
|------------------------------|--|--|
| Wire Type (JIS)              | AVX, AVS                                   | AVX, AVS, AVSS, CAVS                       |
| AWG                          | #19  | #20  |
| Conductor Cross Section Area | 0.75mm <sup>2</sup> (.00116 <sup>2</sup> ) | 0.75mm <sup>2</sup> (.00116 <sup>2</sup> ) |
| Insulation Outer Diameter    | 2.2mm (.087")                              | 2.2mm (.087")                              |

## MATERIALS AND FINISHES

|             |                                      |
|-------------|--------------------------------------|
| Description | Materials/Finishes                   |
| Insulator   | PBT (UL94HB, Yellow)                 |
| Pin Contact | Copper Alloy, selective Gold Plating |

Consult JAE for "Ordering Information".

Connector Profile (Ref.)



Dimensions in mm (inches).

Technology to Inspire Innovation

# JAE

***“Building Technologies  
to Connect Your World”***



## **Japan Aviation Electronics Industry, Limited**

1-19, Aobadai 3-chome, Meguro-ku  
Tokyo 153-8539, Japan  
Telephone: 03-3780-2736  
Fax: 03-3780-2883

## **JAE Electronics, Inc.**

142 Technology Drive, Suite 100  
Irvine, California 92618-2430, U.S.A.  
Telephone: 949-753-2600  
Fax: 949-753-2699  
800-523-7278 Toll free in the U.S.A.

## **JAE Europe**

Coliseum Business Centre  
Riverside Way, Camberley  
Surrey, GU15 3YL, England  
Telephone: 44-1276-404000  
Fax: 44-1276-404010

## **JAE Taiwan, Ltd.**

4F-1, No. 88, Chung Hsiao E. Rd.  
Sec. 2, Taipei, Taiwan, R.O.C.  
Telephone: 886-2-2396-7676  
Fax: 886-2-2392-5929

## **JAE Hong Kong, Ltd.**

Suites 1407-11, 14/F, Tower 2, The Gateway,  
25 Canton Road, Tsimshatsui, Kowloon, Hong Kong  
Telephone: 852-2723-7782  
Fax: 852-2723-9028

## **JAE Korea, Inc.**

1602, Korea City Air Tower  
159-9 Samsung-Dong, Kangnam-ku  
Seoul, 135-973, Korea  
Telephone: 82-2-551-8959  
Fax: 82-2-551-8958

## **JAE Philippines, Inc.**

PEZA Zone, Gateway Business Park, Javalera  
General Trias, 4107 Cavite, Philippines  
Telephone: 63-46-433-0285  
Fax: 63-46-433-0287

## **JAE Singapore Pte., Ltd.**

33 Tannery Lane, #02-01 Hoesteel  
Industrial Building  
Singapore 347789  
Telephone: 65-6748-1332  
Fax: 65-6748-2920

## **JAE Shanghai Co., Ltd.**

RM 1407, Shanghai Mart 2299 Yanan Rd.  
West Shanghai 200336 P.R.C.  
Telephone: 86-21-6236-0322  
Fax: 86-21-6236-1292