

**Technical specification:**

Rated voltage:	160 V
IEC 61076-2-101	
Current rating:	4 A at 40°C
IEC 61076-2-101	
Insulation resistance:	>=100 MΩ
IEC 60512	
Pollution degree:	3/2
IEC 60664-1	
Degree of protection:	IP 67, in mated condition
IEC 60529	
Temperature range:	-30°C ... +70°C
Mating cycles:	>=100
IEC 60512-9a	

**Materials:**

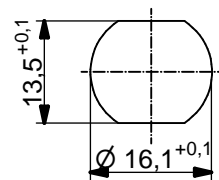
Contact:	CuZn
Contact plating:	Nickel, gold plated
Contact carrier:	PBT GF, UL 94
Sealing connector:	FPM
chassis:	NBR
Counternut:	CuZn, nickel plated
Socket housing:	CuZn, nickel plated

**Installation specification:**

Recommended torque:	1-1,2 Nm
Conec installation tool:	Torque wrench: 36-000200 Insert across flats 19: 36-000250

**Contact assignment:**

- 1) yellow
- 2) white
- 3) orange
- 4) blue
- Shielding socket housing



Minimum wall thickness 1,5mm, alternativ panel cut-out d=16,1

Part no:	Description:	Length L:	Cable:
43-01660	SAL - 12D - FKH4.2 - 0,5 / G6	0,5m	TPU, UL, green, 4xAWG22 Cable: 781-G63400
43-01661	SAL - 12D - FKH4.2 - 1 / G6	1m	
43-01662	SAL - 12D - FKH4.2 - 2 / G6	2m	
43-xxxxx	SAL - 12D - FKH4.2 - ... / G6	x	

D see data sheet cable

DO NOT ALTER CAD DRAWING BY HAND Directive 2002/95/EC RoHS compliant	Index: a 07.01.13 MG Ä4555 Data sheet revised, technical specification changed, materials corrected	dim. in mm	title: <b>Female socket M12x1 with Cable, backmounting, Ethernet 100MHz</b>	
	tolerance of cable: L ≤ 4m: L + 40mm L > 4m: L + 1%	date name		
	general tolerance: 0 ± 0,50mm 0,0 ± 0,25mm 0,00 ± 0,10mm	drawn 23.09.10 Fromm appd. 23.09.10 W.Schmidt	dwg no:	43K1A1187
	THIS DRAWING MAY NOT BE COPIED OR REPRODUCED IN ANY WAY, AND MAY NOT BE PASSED ON TO A THIRD PARTY WITHOUT WRITTEN PERMISSION. OWNERSHIP AND COPYRIGHT OF CONEC GmbH	<b>CONEC</b> ®	part no:	see table