

MATERIALS AND FINISHES

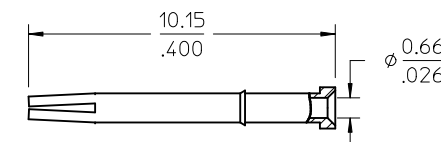
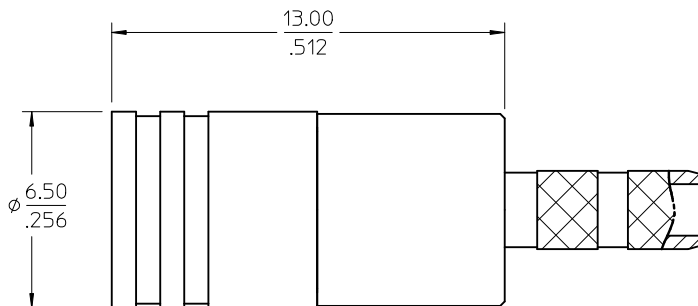
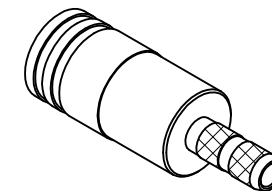
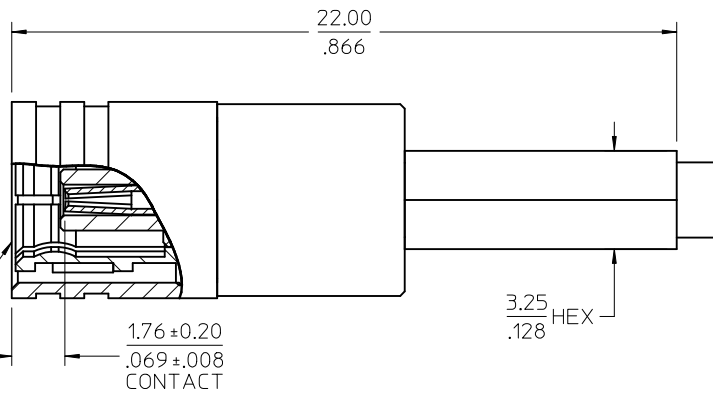
BODY, FERRULE: BRASS  
PLATED GOLD

CENTER CONTACT: BERYLLIUM COPPER  
PLATED GOLD

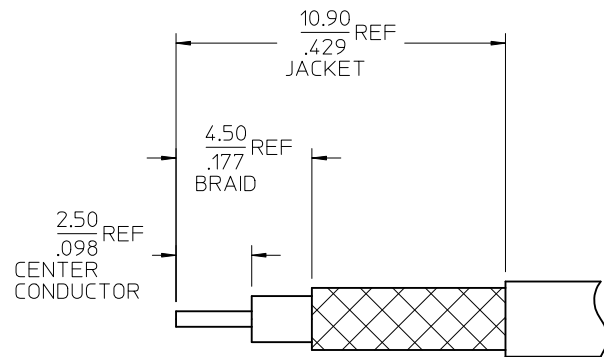
INSULATOR: TEFLON

RETAINING RING: BERYLLIUM COPPER

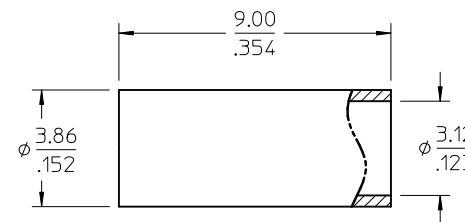
SMB PLUG  
INTERFACE



CENTER CONTACT



RECOMMENDED CABLE STRIP



FERRULE

73396-0600	SMALL TRAY PACKING
73404-2310	73100-0248, ONE PER BAG
73100-0248	TRAY
PART NO.	PACKAGING

PS-89675-3540	ELECTRO/MECH PERFORM.
SPECIFICATION	DESCRIPTION

CHG: ADD INTERFACE  
DIMENSION  
PS WAS 73598-0099

EC NO: URF2011-0323  
DRAWN: JWIENER 2010/12/06  
CHKD: SSS 2010/12/06  
APPR: JWIENER 2010/12/07

QUALITY  
SYMBOLS  
▽=0  
▽=0

GENERAL TOLERANCES  
(UNLESS SPECIFIED)

	mm	INCH
4 PLACES	± .005	± .0004
3 PLACES	± .003	± .0002
2 PLACES	± .002	± .0001
1 PLACE	± .001	± .00005

ANGULAR ± 2 °

DRAFT WHERE APPLICABLE  
MUST REMAIN  
WITHIN DIMENSIONS

DIMENSION STYLE  
MM/IN

DRAWN BY DATE  
FIELDS 1995/08/10

CHECKED BY DATE

APPROVED BY DATE  
JWIENER 2010/12/07

MATERIAL NO.  
SEE TABLE

SIZE  
C

SCALE  
DESIGN UNITS  
METRIC

THIRD ANGLE  
PROJECTION

TITLE  
SMB PLUG STR FOR RG316  
CABLE 50 OHMS  
SMB-PC

MOLEX INCORPORATED

DOCUMENT NO.  
SD-73100-0248

SHEET NO.  
1 OF 1