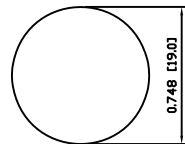
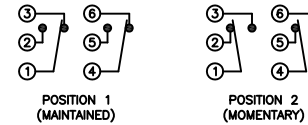


SUGGESTED PANEL CUTOUT



MAXIMUM PANEL THICKNESS: 0.433 [11.0mm]

SCHEMATIC



SPECIFICATIONS

FUNCTION:
2P2T ON-(ON)
RATING:
2A 48VDC
CONTACT RESISTANCE:
Initial: 50mΩ Max. at 1A 12VDC
INSULATION RESISTANCE:
1,000mΩ Min. at 500VDC
DIELECTRIC STRENGTH:
2,000VAC Min. for 1 Minute
ELECTRICAL LIFE:
50,000 Cycles
MECHANICAL LIFE:
1,000,000 Cycles
TEMPERATURE:
Operating: -20°C to 70°C
INGRESS PROTECTION:
IP65

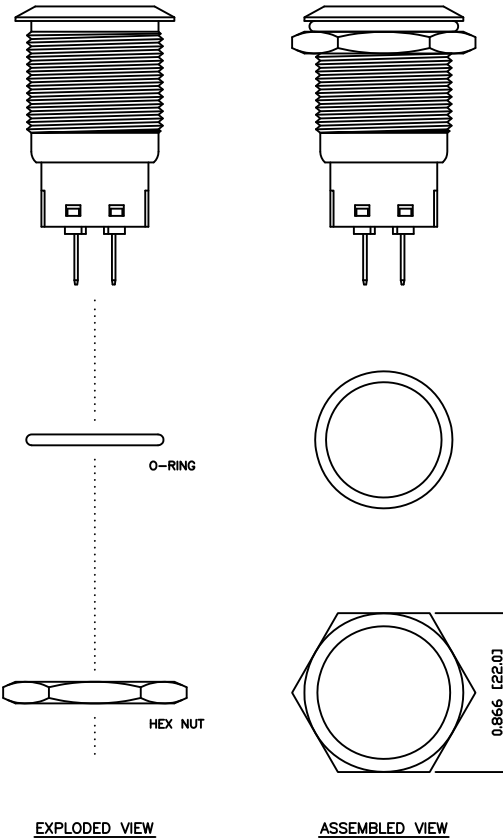
APPROVALS:
RoHS
COMPLIANT

MATERIALS

BUSHING:
Stainless Steel (304)
BASE:
Polycarbonate (PC)
Polybutylene Terephthalate (PBT), UL94 V-2
ACTUATOR:
Stainless Steel (304)
Polycarbonate (PC)
HARDWARE:
Nickel Plated Brass (H59)
SEALING:
Silicone Rubber
INNER ASSEMBLY:
Polyoxymethylene (POM)
Phosphor Bronze
SPRING:
Spring Steel
CONTACTS:
Silver/Cadmium Oxide (AgCdO)
TERMINALS:
Silver Plated Brass (H62)
O-RING:
Silicone Rubber

COLORS AND FINISH

BEZEL:
Stainless Steel
Machine Finish
ACTUATOR:
Stainless Steel
Machine Finish
ILLUMINATION:
None
MARKING:
None



BODY	A	09/07/24	CAB
COLORS	A	09/07/24	CAB
MATERIALS	B	09/10/16	CAB
SPECIFICATIONS	A	09/07/27	CAB
REFERENCE	REV.	DATE	BY

THE INFORMATION CONTAINED IN THIS DOCUMENT IS PROPRIETARY TO E-SWITCH AND IS NOT TO BE COPIED OR TRANSFERRED

A	INITIAL RELEASE	19641	11/02/01	CAB
REV.	DESCRIPTION	PCR	DATE	DRAWN BY

DIMENSIONS	INCHES [MILLIMETERS]
GENERAL TOLERANCES	±0.008 [±0.2] / ±1'
SCALE	DRAWING NOT TO SCALE
PROJECTION	1st Angle

PV4F2HOSS		
ITEM NUMBER	DATE	REVISION
52-PV4F2HOSS	FEBRUARY 1, 2011	A