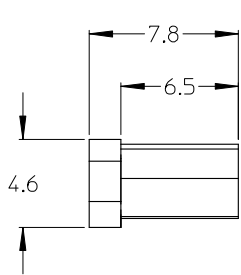
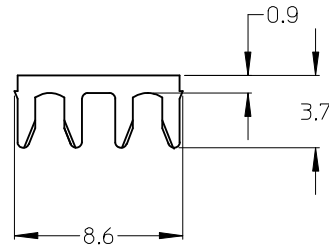


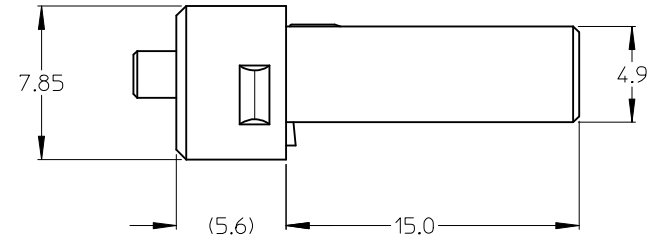
10	9
P/N	STOPPER-MATERIAL
106108-6004	SS 304
106108-6012	BeCu C17200



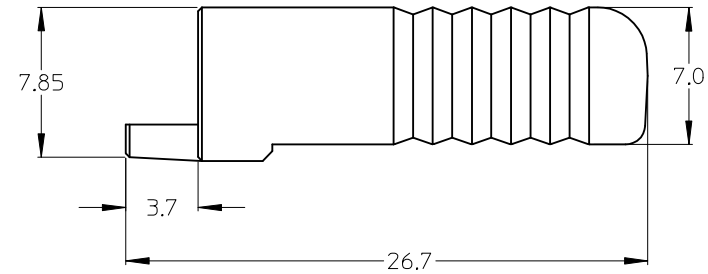
NEW SMI PLG CAP (2X )



NEW SMI CONNECTOR FIBER STOPPER



NEW SMI CONNECTOR PLUG HOUSING



NEW SMI CONNECTOR COVER HOUSING

NOTES:

1. ALL DIMENSIONS ARE FOR REFERENCE ONLY.
2. CONNECTOR SHALL BE BULK PACKED IN QUANTITY OF 50.

<b>ENTER DESCRIPTION</b> EC NO: MF2014-0622 DRWN: SBOJANIC 2014/04/06 CHKD: APPR: IGUMIN 2014/04/11 REV:	QUALITY SYMBOLS ▽=0 ▽=0	GENERAL TOLERANCES (UNLESS SPECIFIED)		DIMENSION STYLE <b>MM ONLY</b>		SCALE	DESIGN UNITS INCH	THIRD ANGLE PROJECTION	
		mm	INCH	DRAWN BY	DATE	TITLE			
	4 PLACES	±---	±---	JSZEWCK	2007/04/19	SMI LONG BODY CONNECTOR KIT (BULK PACK)			
	3 PLACES	±---	±---	CHECKED BY	DATE	MOLEX INCORPORATED			
2 PLACES	±---	±---	APPROVED BY		DATE	DOCUMENT NO.		SHEET NO.	
1 PLACE	±---	±---	I. GUMIN		2007/04/19	SD-106108-6004		1 OF 01	
ANGULAR ±1/2°			MATERIAL NO.		SEE TABLE		THIS DRAWING CONTAINS INFORMATION THAT IS PROPRIETARY TO MOLEX INCORPORATED AND SHOULD NOT BE USED WITHOUT WRITTEN PERMISSION		
DRAFT WHERE APPLICABLE MUST REMAIN WITHIN DIMENSIONS			SIZE		B				