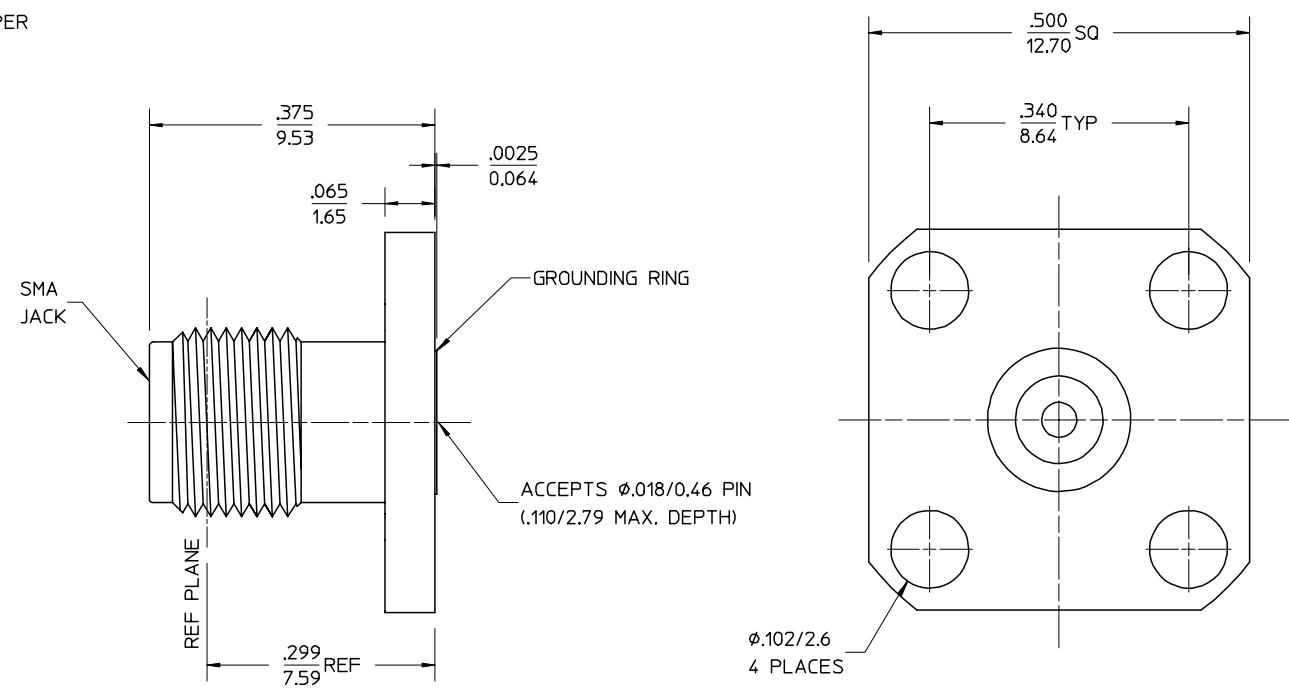


MATERIALS AND FINISHES:  
 BODY STAINLESS STEEL  
 PASSIVATED  
  
 CENTER CONTACT BERYLLIUM COPPER  
 PLATED GOLD  
  
 INSULATOR TEFLON



PART # 73251-0800

MIL-STD-348, FIGURE 310-2	INTERFACE
PS-89675-2910	ELECTRO/MECH PERFORMANCE
SPECIFICATION	DESCRIPTION

CNG: NEW RELEASE	EC NO. URF-0233	DESCRIPTION	UNLESS OTHERWISE SPECIFIED DIMS ARE INCHES AND ANGLES ARE DEGREES. 1. √ 63 ALL OVER. 2. NO CHATTER OR NON-UNIFORM SURFACE FINISH ALLOWED. 3. PARTS TO BE FREE OF BURRS & SHARP EDGES .005 MAX BREAK, & EXTERNAL THREADS TO BE ROLLED OR SINGLE POINT. 4. EXTERNAL THREADS TO BE ROLLED OR SINGLE POINT. 5. DIAMETERS TO BE CONCENTRIC WITHIN .003 TIR.
	DRWN: TEF 06/21/99 CHK: DHG 06/21/99 APPR: GMH 06/21/99		
A	REV		

UNLESS OTHERWISE SPECIFIED DIMS ARE INCHES AND ANGLES ARE DEGREES.  
 1. √ 63 ALL OVER.  
 2. NO CHATTER OR NON-UNIFORM SURFACE FINISH ALLOWED.  
 3. PARTS TO BE FREE OF BURRS & SHARP EDGES .005 MAX BREAK, & EXTERNAL THREADS TO BE ROLLED OR SINGLE POINT.  
 4. EXTERNAL THREADS TO BE ROLLED OR SINGLE POINT.  
 5. DIAMETERS TO BE CONCENTRIC WITHIN .003 TIR.

QUALITY SYMBOLS
MAJOR ▽*
CRITICAL ▽C*

GENERAL TOLERANCES: (UNLESS SPECIFIED)	SCALE	DESIGN UNITS
	mm INCH	<input type="checkbox"/> mm <input checked="" type="checkbox"/> INCH
4 PLACES * .0005	DRAWN BY & DATE	EDC 02/19/99
3 PLACES * .005	CHECKED BY & DATE	DHG 02/19/99
2 PLACES * .01	APPROVED BY & DATE	GMH 02/19/99
1 PLACE * .1	ANGULAR: ±2°	CAD FILENAME
DRAFT WHERE APPLICABLE MUST REMAIN WITHIN DIMENSIONS	THIS DRAWING CONTAINS INFORMATION THAT IS PROPRIETARY TO MOLEX INCORPORATED AND SHOULD NOT BE USED WITHOUT WRITTEN PERMISSION.	

THIRD ANGLE PROJECTION	DIMENSIONS:
<input type="checkbox"/> mm INCH <input checked="" type="checkbox"/> INCH mm <input type="checkbox"/> mm ONLY	

TITLE: SMA JACK, RECEPTACLE, 4 HOLE FLANGE MOUNT, ACCEPTS .018 DIA PIN SMA-JR/F	MATERIAL NO. SEE NOTE	DRAWING NO. SD-73251-080	SHEET NO. 1 of 1
MOLEX MOLEX INCORPORATED			SIZE B