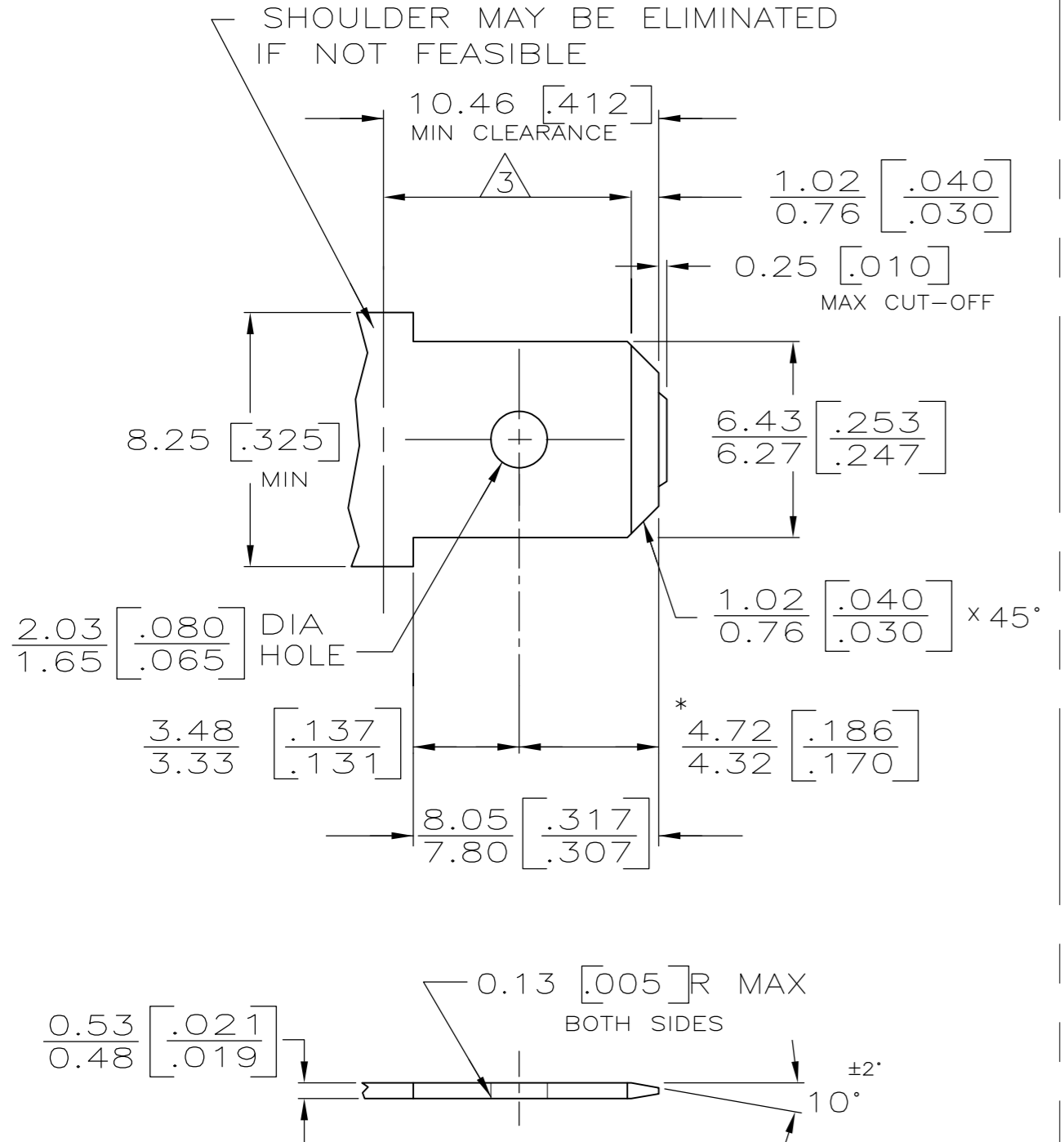


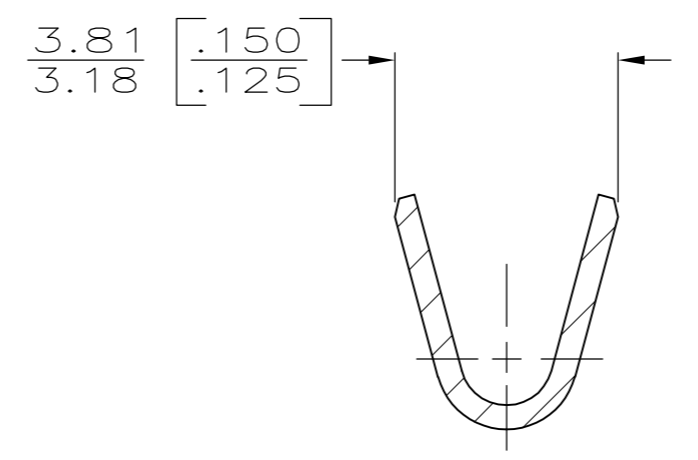
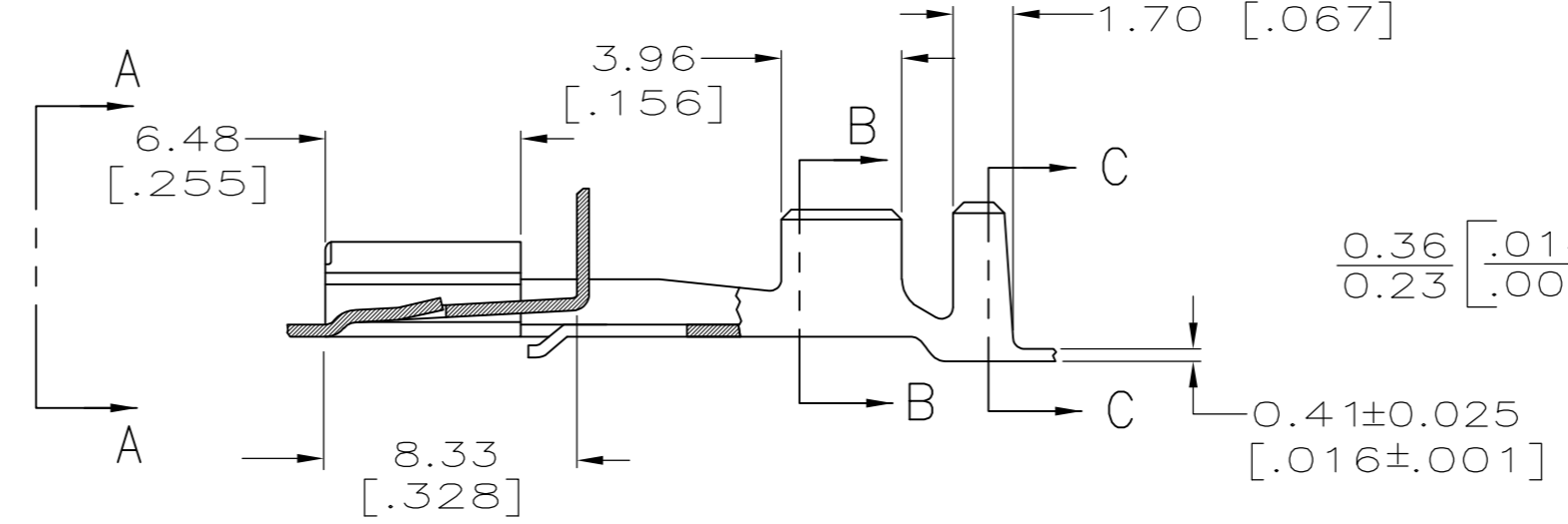
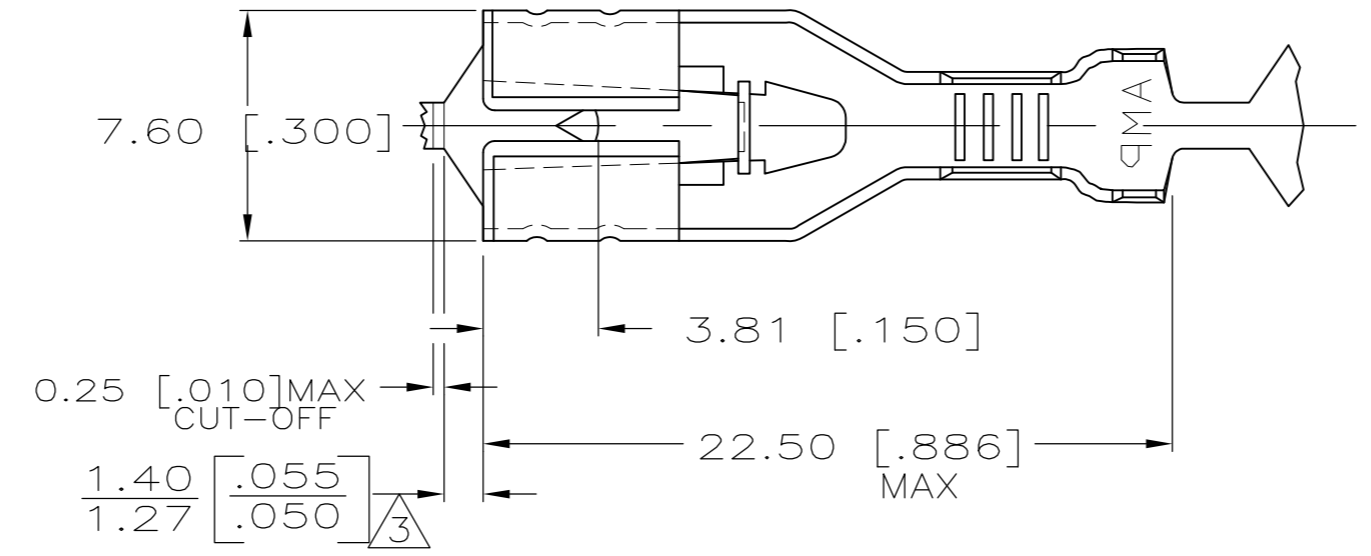
THIS DRAWING IS UNPUBLISHED. RELEASED FOR PUBLICATION
 © COPYRIGHT - By - ALL RIGHTS RESERVED.

LOC		DIST		REVISIONS			
P	LTR	DESCRIPTION		DATE	DWN	APVD	
AF	50	F		REVISED PER ECR-12-013486	08JAN13	KH	KR

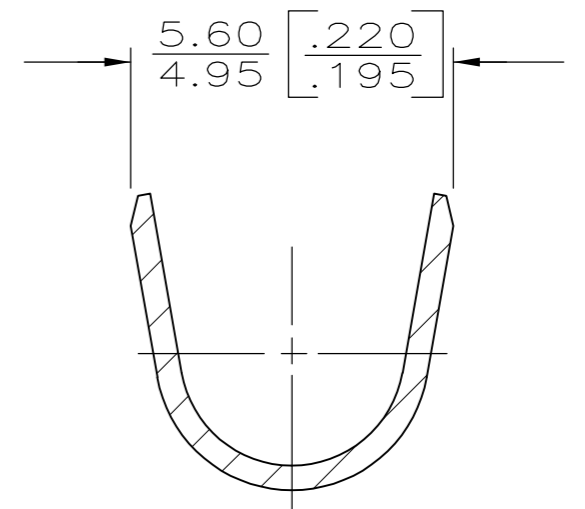
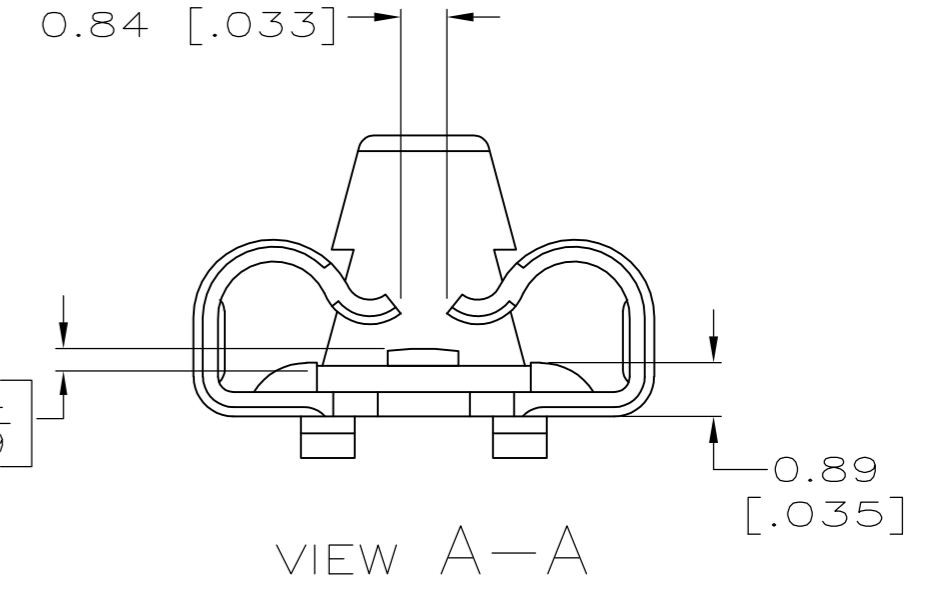
SUGGESTED MATING TAB



- MATL: 1/2H BRASS OR NICKEL PL STEEL.
- NO BURRS PERMISSIBLE AT HOLE.
- MUST BE FLAT WITHIN 0.076 [0.003] OVER THIS LENGTH.
- TIN PLATING IS REQUIRED ON BRASS WHEN TERMINAL TEMP. IS OVER 225°F
- HOLE MUST BE SYMMETRICAL ABOUT TAB Q WITHIN 0.076 [0.003]
- * TO BE USED ONLY WHEN SHOULDER IS ELIMINATED.



SECTION B-B



SECTION C-C

- CONTINUOUS STRIP ON REELS.
- WIRE SIZE IS [#18-#14] AWG.
- THE 1.40 [0.055] / 1.27 [0.050] DIMENSION MUST BE MAINTAINED BY THE APPLICATOR CUT-OFF TO ENSURE THE PROPER LOCKING FUNCTION OF THE RECEPTACLE.
- INSULATION RANGE IS 2.29-3.94 [0.090-.155] DIA.

63442-1
PART NO.



RECEPTACLE, POSI-LOCK,
6.35 [0.250] SERIES

THIS DRAWING IS A CONTROLLED DOCUMENT.		DWN	JR RUTH	10/29/98	NAME	SIZE	CAGE CODE	DRAWING NO	RESTRICTED TO	
DIMENSIONS:		CHK	MS FEHER	10/29/98						
mm [INCHES]		APVD	D DECKER	10/29/98						
TOLERANCES UNLESS OTHERWISE SPECIFIED:		PRODUCT SPEC								
0 PLC ± -		APPLICATION SPEC			SCALE	4:1	SHEET	1 of 1	REV	F
1 PLC ± -		WEIGHT			A2	00779	C=63442			
2 PLC ± 0.25 [0.010]		CUSTOMER DRAWING								
3 PLC ± -										
4 PLC ± -										
ANGLES ± -										
FINISH										
MATERIAL										
BRASS										
FINISH										
TIN										