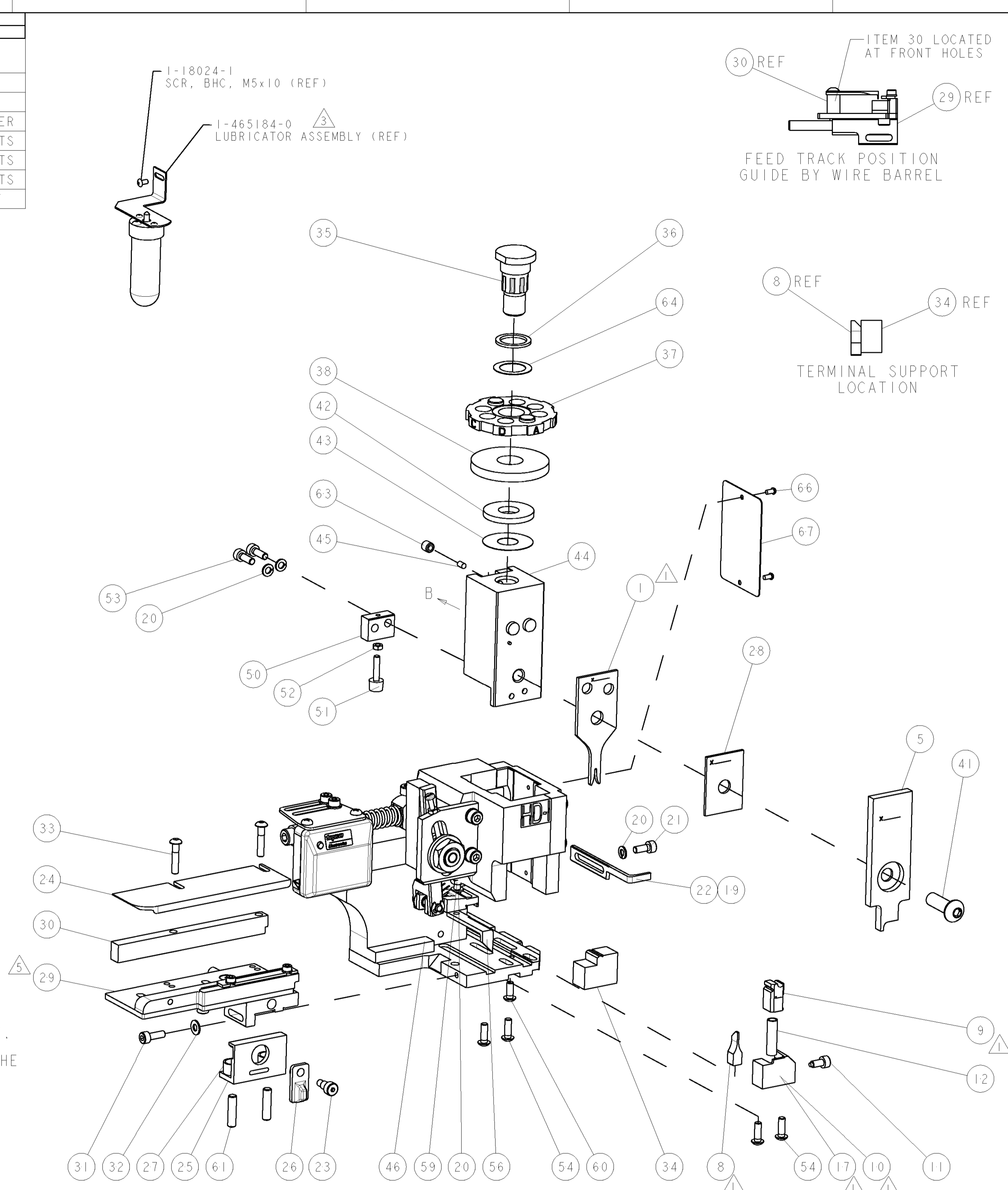
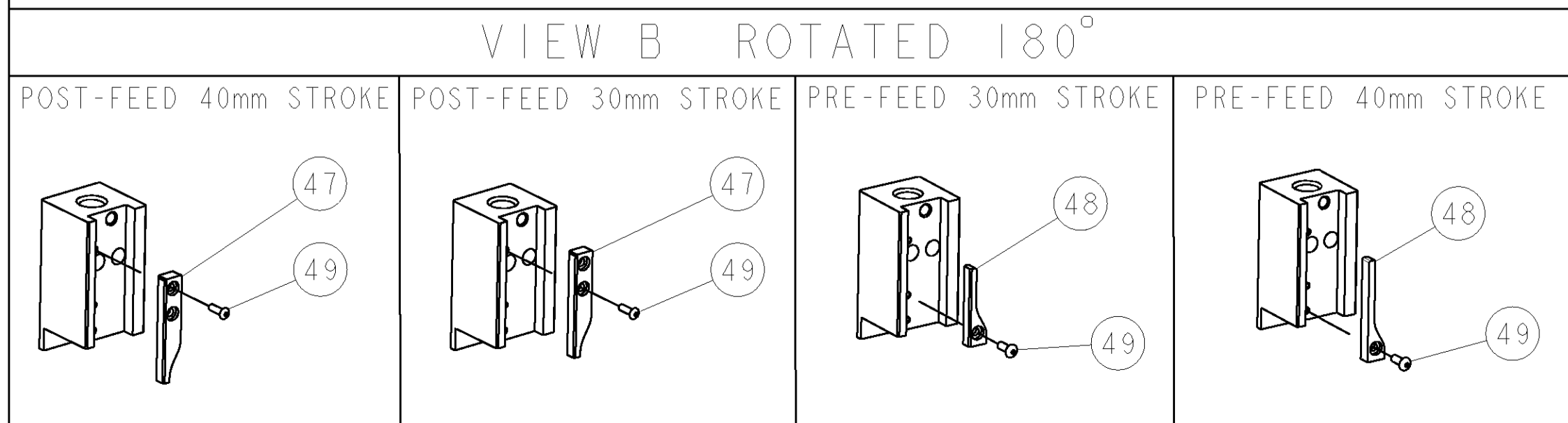


PART NUMBER	REV	TERMINATOR	FEED TYPE	DESCRIPTION
1426649-1	A	LEADMAKER	MECH POST FEED	CUTS CARRIER
1426649-2	A	BENCH	MECH PRE FEED	CUTS CARRIER
1426649-6	A	LEADMAKER	MECH POST FEED	CONTINUOUS CARRIER
7-1426649-1	A	LEADMAKER	MECH POST FEED	-1 AND SPARE PARTS
7-1426649-2	A	BENCH	MECH PRE FEED	-2 AND SPARE PARTS
7-1426649-6	A	LEADMAKER	MECH POST FEED	-6 AND SPARE PARTS
7-1426649-7	A	-	-	SPARE PARTS KIT

CRIMP DATA		TE TERMINAL		TE CRIMP SPECS	
TERMINAL NAME: CENTER CONTACT, JACK HF FAKRA 2, RG174					
CRIMP	SIZE	TYPE	RANGE		
WIRE	0.94 [1.037 IN]	F	0.14mm ²		
INSUL	.00 [1.000 IN]	-	-		
WIRE STRIP LENGTH SEE APPL SPECS		APPL INSTRUCTIONS 408-8322			
TERMINAL 114-18622 (A)		-		FEED	
APPL SPEC 114-18623 (B)		-		5.00 [1.97 IN]	
TERMINALS APPLIED					
1418970 (A)	-	-	-	-	-
1418971 (A)	-	-	-	-	-
1719685 (B)	-	-	-	-	-
-	-	-	-	-	-
-	-	-	-	-	-
WIRE SIZE	CRIMP HEIGHT	PINPN & LENGTH [IN]			
0.14mm ²	0.72 ± 0.03 [1.028 ± .001 IN]	2-354779-0 [1.3090]			

- RECOMMENDED SPARE PARTS.
- GREASE RAM, CAM, CAM FOLLOWER AND FEED ROD LIGHTLY.
- CERTAIN TERMINALS REQUIRE LUBRICATION. REFER TO THE APPLICATOR INSTRUCTION SHEET FOR MORE INFORMATION.
- LUBRICATE DAILY PER THE APPLICATOR INSTRUCTION SHEET SUPPLIED WITH THE APPLICATOR.
- STRIP GUIDE MAY REQUIRE ADJUSTMENT WHEN CHANGING FROM ONE TERMINAL TO ANOTHER.



77	76	72	71	6	2	1	PART NO	DESCRIPTION	ITEM NO
-	-	-	-	-	-	-	-	-	83
-	-	-	-	-	-	-	-	-	82
-	-	-	-	-	-	-	-	-	81
-	-	-	-	-	-	-	-	-	80
-	-	-	-	-	-	-	-	-	79
-	-	-	-	-	-	-	-	-	78
-	-	-	-	-	-	-	-	-	77
-	-	-	-	-	-	-	-	-	76
-	-	-	-	-	-	-	-	-	75
-	-	-	-	-	-	-	-	-	74

SET UP GAGE 458637-3		LOC	DIST	REVISONS				DATE	DWN	APPR
P	LTR	A	66	DESCRIPTION	DATE	DWN	APPR	DP	MC	
-	-	-	-	-	-	-	-	-	-	73
-	-	-	-	-	-	-	-	-	-	72
-	-	-	-	-	-	-	-	-	-	71
-	-	-	-	-	-	-	-	-	-	70
-	-	-	-	-	-	-	-	-	-	69
-	-	-	-	-	-	-	-	-	-	68
-	-	-	-	-	-	-	-	-	-	67
-	-	-	-	-	-	-	-	-	-	66
-	-	-	-	-	-	-	-	-	-	65
-	-	-	-	-	-	-	-	-	-	64
-	-	-	-	-	-	-	-	-	-	63
-	-	-	-	-	-	-	-	-	-	62
-	-	-	-	-	-	-	-	-	-	61
-	-	-	-	-	-	-	-	-	-	60
-	-	-	-	-	-	-	-	-	-	59
-	-	-	-	-	-	-	-	-	-	58
-	-	-	-	-	-	-	-	-	-	57
-	-	-	-	-	-	-	-	-	-	56
-	-	-	-	-	-	-	-	-	-	55
-	-	-	-	-	-	-	-	-	-	54
-	-	-	-	-	-	-	-	-	-	53
-	-	-	-	-	-	-	-	-	-	52
-	-	-	-	-	-	-	-	-	-	51
-	-	-	-	-	-	-	-	-	-	50
-	-	-	-	-	-	-	-	-	-	49
-	-	-	-	-	-	-	-	-	-	48
-	-	-	-	-	-	-	-	-	-	47
-	-	-	-	-	-	-	-	-	-	46
-	-	-	-	-	-	-	-	-	-	45
-	-	-	-	-	-	-	-	-	-	44
-	-	-	-	-	-	-	-	-	-	43
-	-	-	-	-	-	-	-	-	-	42
-	-	-	-	-	-	-	-	-	-	41
-	-	-	-	-	-	-	-	-	-	40
-	-	-	-	-	-	-	-	-	-	39
-	-	-	-	-	-	-	-	-	-	38
-	-	-	-	-	-	-	-	-	-	37
-	-	-	-	-	-	-	-	-	-	36
-	-	-	-	-	-	-	-	-	-	35
-	-	-	-	-	-	-	-	-	-	34
-	-	-	-	-	-	-	-	-	-	33
-	-	-	-	-	-	-	-	-	-	32
-	-	-	-	-	-	-	-	-	-	31
-	-	-	-	-	-	-	-	-	-	30
-	-	-	-	-	-	-	-	-	-	29
-	-	-	-	-	-	-	-	-	-	28
-	-	-	-	-	-	-	-	-	-	27
-	-	-	-	-	-	-	-	-	-	26
-	-	-	-	-	-	-	-	-	-	25
-	-	-	-	-	-	-	-	-	-	24
-	-	-	-	-	-	-	-	-	-	23
-	-	-	-	-	-	-	-	-	-	22
-	-	-	-	-	-	-	-	-	-	21
-	-	-	-	-	-	-	-	-	-	20
-	-	-	-	-	-	-	-	-	-	19
-	-	-	-	-	-	-	-	-	-	18
-	-	-	-	-	-	-	-	-	-	17
-	-	-	-	-	-	-	-	-	-	16
-	-	-	-	-	-	-	-	-	-	15
-	-	-	-	-	-	-	-	-	-	14
-	-	-	-	-	-	-	-	-	-	13
-	-	-	-	-	-	-	-	-	-	12
-	-	-	-	-	-	-	-	-	-	11
-	-	-	-	-	-	-	-	-	-	10
-	-	-	-	-	-	-	-	-	-	9
-	-	-	-	-	-	-	-	-	-	8
-	-	-	-	-	-	-	-	-	-	7
-	-	-	-	-	-	-	-	-	-	6
-	-	-	-	-	-	-	-	-	-	5
-	-	-	-	-	-	-	-	-	-	4
-	-	-	-	-	-	-	-	-	-	3
-	-	-	-	-	-	-	-	-	-	2
-	-	-	-	-	-	-	-	-	-	1
-	-	-	-	-	-	-	-	-	-	1
-	-	-	-	-	-	-	-	-	-	1

DIMENSIONS: mm [IN]	TOLERANCES UNLESS OTHERWISE SPECIFIED: 0 PLC ± 1 PLC ± 2 PLC ± 3 PLC ± 4 PLC ± ANGLES ±	DWG: J2AUG2007 CHK: M. CLIFFORD APVD: J2AUG2007 PRODUCT SPEC: APPLICATION SPEC: See Table	NAME: SIDE FEED HDI APPLICATOR
MATERIAL:	FINISH:	WEIGHT:	RESTRICTED TO:
CUSTOMER DRAWING		SCALE: 3:5	SHEET 1 OF 1 REV A