

4

3

2

1

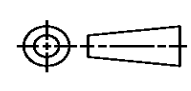
THIS DRAWING IS UNPUBLISHED. RELEASED FOR PUBLICATION
 © COPYRIGHT ALL RIGHTS RESERVED.

LOC	DIST	REVISIONS			
P	LTR	DESCRIPTION	DATE	DWN	APVD
	B1	ECR-14-003640	12MAR2014	GK	HMR

REPLACED BY OCEAN STYLE APPLICATOR PART NUMBER 2151808-2

FOR REPLACEMENT PARTS FOR APPLICATOR 1528274
 REFER TO ADDITIONAL PAGE(S). SPARE PARTS KIT (IF LISTED)
 WILL REMAIN AVAILABLE.

THE REPLACEMENT OCEAN STYLE APPLICATOR HAS THE
 SAME TERMINATOR/PRESS INTERFACE AS APPLICATOR
 1528274

THIS DRAWING IS A CONTROLLED DOCUMENT.		DWN	GOPALAKRISHNA HV		
DIMENSIONS:		CHK	RAGHAVENDRA		
		APVD	RAGHAVENDRA		
TOLERANCES UNLESS OTHERWISE SPECIFIED:		PRODUCT SPEC	NAME		
0 PLC	±	APPLICATION SPEC	FINE ADJ SIDE FD HD-I APPL		
1 PLC	±		SIZE	CAGE CODE	DRAWING NO
2 PLC	±		A3		©- 1528274
3 PLC	±				RESTRICTED TO
4 PLC	±				
ANGLES	±	WEIGHT			
MATERIAL	FINISH	CUSTOMER DRAWING	SCALE	SHEET 1 OF 2	REV B1



DRAWING MADE IN THIRD ANGLE PROJECTION

1528274 1528274

/home/us024474/tecmod

PART NUMBER	REV	FIRST USED	TERMINATOR	FEED TYPE	DESCRIPTION
1528274-1	B	-	LEADMAKER	MECH POST FEED	CUTS CARRIER
1528274-2	B	-	BENCH	MECH PRE FEED	CUTS CARRIER
1528274-6	B	-	LEADMAKER	MECH POST FEED	CONTINUOUS CARRIER
7-1528274-1	B	-	LEADMAKER	MECH POST FEED	-1 AND SPARE PARTS
7-1528274-2	B	-	BENCH	MECH PRE FEED	-2 AND SPARE PARTS
7-1528274-6	B	-	LEADMAKER	MECH POST FEED	-6 AND SPARE PARTS
7-1528274-7	A	-	-	-	SPARE PARTS KIT

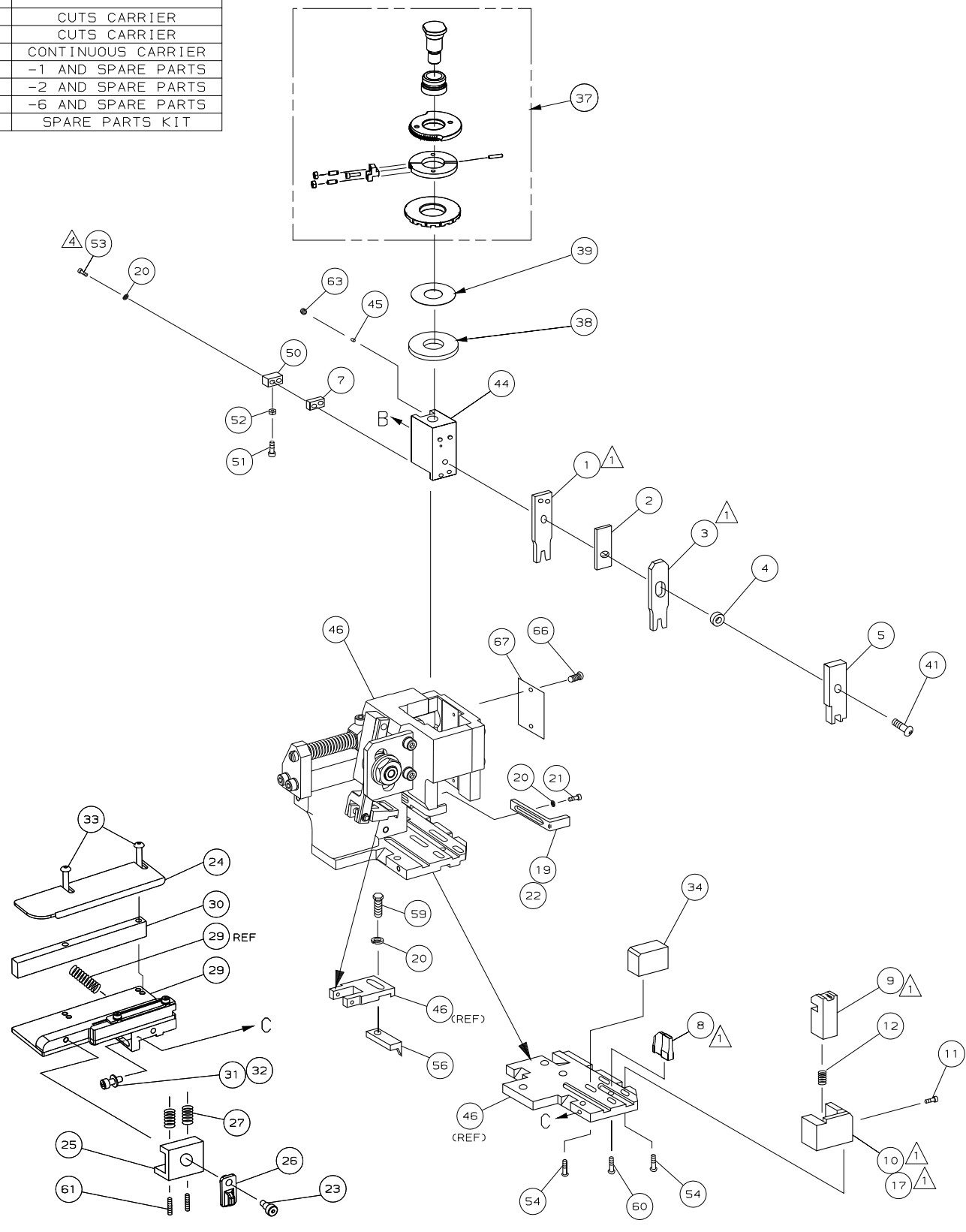
CRIMP DATA (AMP TERMINAL)
 TERMINAL NAME: JUNIOR-TIMER CONTACT

CRIMP	SIZE	TYPE	RANGE
WIRE	1.57 [.062 IN]	F	0.20-0.50mm ²
INSUL	2.29 [.090 IN]	F	1.00-1.60 [.039-.063 IN]
WIRE STRIP LENGTH		APPL INSTRUCTION	
3.40-4.00 [.134-.157 IN]		408-8322 & 408-8490	
TERMINAL	114-18079 (A)	-	FEED
APPL SPEC	114-18080 (B)	-	12.70 [.500 IN]

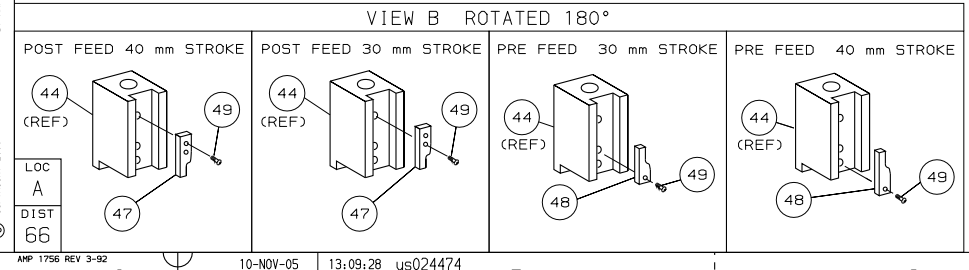
TERMINALS APPLIED

927871 (A)	-	-	-	-
926984 (B)	-	-	-	-
-	-	-	-	-
-	-	-	-	-
-	-	-	-	-
-	-	-	-	-
-	-	-	-	-
-	-	-	-	-
-	-	-	-	-
-	-	-	-	-

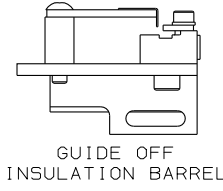
WIRE SIZE mm ² AWG	CRIMP HEIGHT	REF SETTING
0.50mm ²	1.06 ±0.05 [.042 ±.002 IN]	B 4
0.37mm ²	0.99 ±0.05 [.039 ±.002 IN]	B 9
0.35mm ²	0.98 ±0.05 [.039 ±.002 IN]	C 0
0.25mm ²	0.93 ±0.05 [.037 ±.002 IN]	C 2
0.20mm ²	0.91 ±0.05 [.036 ±.002 IN]	C 4



- 1. RECOMMENDED SPARE PARTS.
- 2. GREASE RAM, CAM, CAM FOLLOWER AND FEED ROD LIGHTLY.
- 3. LUBRICATE DAILY PER THE APPLICATOR INSTRUCTION SHEET SUPPLIED WITH THE APPLICATOR.
- 4. CUT TO LENGTH AT ASSY.
- 5. FEED ADJUSTMENT REQUIRED WHEN USING THIS TERMINAL.



*** WARNING:**
 ON INSTALLATION, SET WIRE DISC TO LARGEST WIRE SIZE SETTING. USE OF SETTINGS BELOW MIN REQ'D CRIMP HEIGHT SETTING WILL CAUSE DAMAGE TO CRIMP TOOLING.



QTY	REQD	PER	ASSY	PART NO	DESCRIPTION	ITEM NO
-	1	1	1	1	1	1528274
-	1	1	1	1	1	1338705-3
-	1	1	1	1	1	461264-5
-	2	2	2	2	2	21017-2
-	1	1	1	1	1	3-18031-0
-	2	2	2	2	2	2-18032-5
-	1	1	1	1	1	18024-7
-	1	1	1	1	1	5-18022-2
-	1	1	1	1	1	1338685-1
-	4	4	4	4	4	18024-8
-	2	2	2	2	2	9-18023-6
-	1	1	1	1	1	18030-1
-	1	1	1	1	1	811242-5
-	1	1	1	1	1	690753-2
-	1	1	1	1	1	18024-3
-	1	1	1	1	1	1338675-1
-	1	1	1	1	1	1338676-1
-	1	1	1	1	1	1320999-3
-	1	1	1	1	1	690191-1
-	1	1	1	1	1	1338660-1
-	1	1	1	1	1	2-18024-6
-	1	1	1	1	1	690125-1
-	1	1	1	1	1	469367-7
-	1	1	1	1	1	879103-3
-	1	1	1	1	1	2-1320934-5
-	2	2	2	2	2	1-18024-0
-	1	1	1	1	1	18027-2
-	1	1	1	1	1	1-18023-2
-	1	1	1	1	1	1320908-4
-	1	1	1	1	1	1633073-1
-	2	2	2	2	2	1-22284-0
-	1	1	1	1	1	356835-1
-	1	1	1	1	1	240792-1
-	1	1	1	1	1	1320928-1
-	1	1	1	1	1	980371-4
-	1	1	1	1	1	690472-2
-	1	1	1	1	1	1-18023-1
-	4	4	4	4	4	18025-2
-	1	1	1	1	1	690472-1
-	1	1	1	1	1	1338684-1
-	1	1	1	1	1	5-22280-0
-	1	1	1	1	1	356885-4
-	1	1	1	1	1	1320921-1
-	1	2	2	2	2	462006-1
-	1	1	1	1	1	1-1333202-0
-	1	1	1	1	1	5-240641-9
-	1	1	1	1	1	2-455889-0
-	1	1	1	1	1	2-238011-2
-	1	2	2	2	2	6-456134-3
-	1	1	1	1	1	455888-7
-	1	2	2	2	2	1-456403-3

QTY REQD PER ASSY		PARTS LIST	
DR	200CT05	APP	200CT05
M	CLIFFORD	M	CLIFFORD
CHK	-	REL	200CT05
NAME FINE ADJ SIDE FD HD-I APPL		MACHINE REF HD-I APPL	
SCALE	D	DWG NO	1528274
SHEET 1 of 1		REV B	

THIS DRAWING IS A CONTROLLED DOCUMENT

LAYOUT L1426075
SET UP GAGE 458637-3

2000

RELEASED FOR PUBLICATION BY AMP INCORPORATED. ALL RIGHTS RESERVED.

THIS DRAWING IS UNPUBLISHED. © COPYRIGHT 2000

AMP 1756 REV 3-92 10-NOV-05 13:09:28 us024474