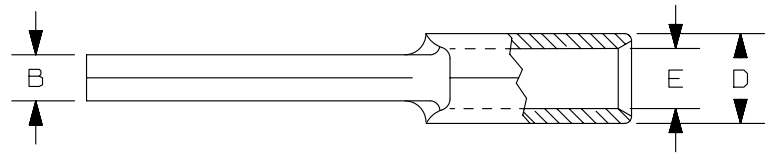


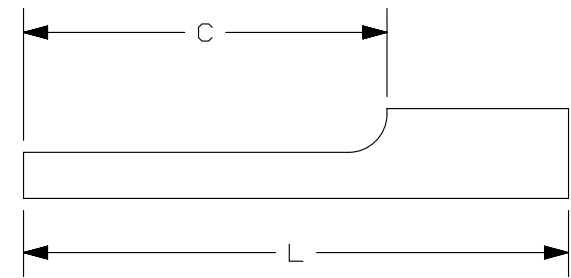
THIS COPY IS PROVIDED ON A RESTRICTED BASIS AND IS NOT TO BE USED IN ANY WAY DETRIMENTAL TO THE INTERESTS OF PANDUIT CORP.

PANDUIT PART #	WIRE SIZE		DIMENSIONS in. [mm]				
	AWG	mm <sup>2</sup>	L ± .03 [0,8]	B ± .01 [0,3]	C ± .015 [0,4]	D ± .01 [0,3]	E ± .01 [0,3]
P18-P47*	#22-18	0,5-1,0	.75 [19,1]	.07 [1,8]	.49 [12,4]	.14 [3,6]	.06 [1,5]
P14-P47*	#16-14	1,5-2,5	.75 [19,1]	.07 [1,8]	.49 [12,4]	.16 [4,1]	.08 [2,0]
P10-P55	#12-10	4,0-6,0	.79 [20,1]	.11 [2,8]	.55 [14,0]	.22 [5,6]	.15 [3,8]



NOTES:

- USED FOR:
  - A. SOLID OR STRANDED COPPER WIRE
  - B. 302°F [150°C] MAX. OPERATING TEMPERATURE
- INSTALLATION TOOLS:
  - A. PANDUIT APPROVED: CT-100A, CT-160, CT-200, CT-260, CT-1570, CT-600-A (CT-570CH), CT-2500 (CT-2570CH)
- WIRE STRIP LENGTH: 9/32" <sup>+1/32</sup> [7,1<sup>+0,8</sup>]
- MATERIAL:
  - A. STAMPING: .03" [0,8] THK COPPER, TIN PLATED
- SEE [www.panduit.com](http://www.panduit.com) FOR PACKAGE QUANTITIES INDICATED BY PART NUMBER SUFFIX
- DIMENSIONS IN BRACKETS ARE METRIC EQUIVALENT



B

B

A

A

REV	DATE	BY	CHK	APR	DESCRIPTION	ECN
06	09.19.12	JBN	LCA	VMB	ADDED METRIC EQUIVALENT. REVISED NOTES. UPDATED TO CURRENT STANDARDS.	A41334

TITLE		PIN TERMINAL, NON-INSULATED,	
		CUSTOMER DRAWING	
ITEM REVISION NAME		N41334BA/06	
DATASET FILE NAME		N41334BA_DC/06A	
UNLESS OTHERWISE SPECIFIED, DIMENSIONAL TOLERANCES ARE: IN [mm]		MATERIAL:	
.x ± .1 [2.54]      .xxx ± .005 [.13]		SEE NOTES	
.xx ± .01 [.25]      ANGLES ± 5 °		DRAWING NUMBER:	
		A41334	
DRAWN BY	DATE	CHK	SCALE
DAW	-	RLS	N.T.S.
SHEET 1 OF 1		SIZE	
		A	

D10100DA/12