

(Continued)

## 7 | Check Your Setup

If your device is connected and configured correctly, you will see the following LED Status:

**POWER:** Green  
**LINK:** Green  
**COMM:** Red / Flashing Red

## 8 | Troubleshooting

LED	COLOR	AIRBORNE DEVICE STATE
POWER	Off	Adapter is not powered.
	Red	Adapter failed Power On Self Test ("POST").
	Amber	Adapter passed POST but is not configured for wireless network communication.
	Green	Adapter passed POST and is configured for wireless communication.
LINK	Off	Adapter is not powered.
	Red / Off	(Periodic Blinking) Adapter is searching for a valid network (Access Point) that matches device's configuration.
COMM	Green	Adapter has successfully associated with an Access Point.
	Off	If Power LED is also Off, then Adapter is not powered. If Power LED is On, then either: • A physical connection detected on Serial/Ethernet cable. • No TCP session from wireless interface has been established.
	Red	No physical Ethernet connection has been detected.
	Red / Off	(Blinking – OFF/Red) A physical Ethernet connection has been detected and there is traffic across the interface. No TCP connection to the adapter has been established on the wireless interface.

### More AirborneM2M Products

**Embedded Dual-band M2M  
Access Point Module**  
# APMN-Q551



**802.11 Wireless Bridge,  
Router & Serial Server**  
# ABDN-ER-IN5010



**B+B SMARTWORX**

Powered by

**ADVANTECH**

1-888-948-2248 | Europe: +353 91 792444

[advantech-bb.com](http://advantech-bb.com)

707 Dayton Road | PO Box 1040 | Ottawa, IL 61350

Phone: 815-433-5100 | Fax: 815-433-5109

[www.advantech-bb.com](http://www.advantech-bb.com) | E-mail: [support@advantech-bb.com](mailto:support@advantech-bb.com)

## + QUICK START GUIDE



### ABDN-ER-DP551 & ABDN-ER-DP551U

Wireless Ethernet Adapter

**Before you begin, be  
sure you have the following:**

- + ABDN-ER-DP551 or ABDN-ER-DP551U
- + (ABDN-ER-DP551) 5 VDC power supply, with 2.1 mm barrel jack
- OR
- (ABDN-ER-DP551U) Dual (Y) USB power cable, with 2.1 mm barrel jack
- + 50 Ohm, omni-directional antenna
- + CD with Airborne Management Center Software

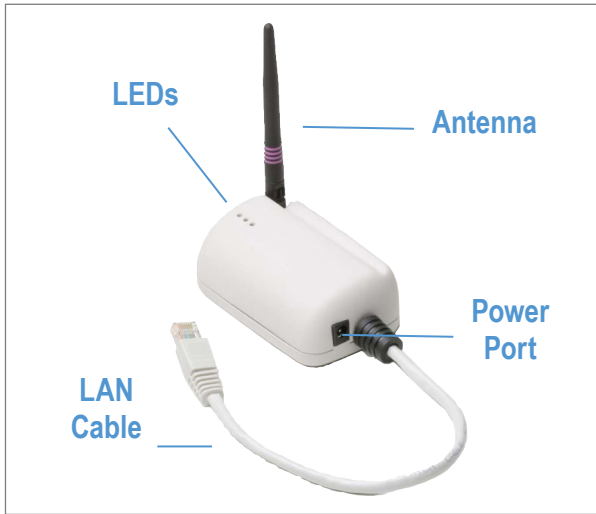
**B+B SMARTWORX**

Powered by

**ADVANTECH**

Fast and easy on the web: [www.advantech-bb.com](http://www.advantech-bb.com)

# Product Overview



## 1 Attach the Antenna

Connect the Antenna to the antenna connector located on the side of the device.

## 2 Connect Ethernet

Connect the Ethernet cable to an Ethernet port on a host computer or network router/switch.

## 3 Connect Power Supply

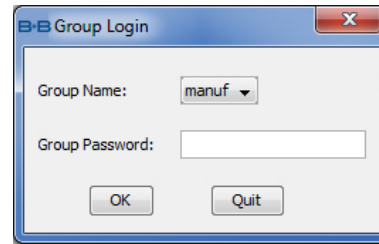
**(ABDN-ER-DP551)** Connect the power supply to an AC power outlet. Plug the barrel connector from the AC power supply into the ABDN-ER-DP551's power port.

**(ABDN-ER-DP551U)** Plug the Dual (Y) USB cable's two USB connectors into two USB ports. Plug the Dual (Y) USB cable's barrel connector into the ABDN-ER-DP551U's power port.

## 4 Connect To The Device

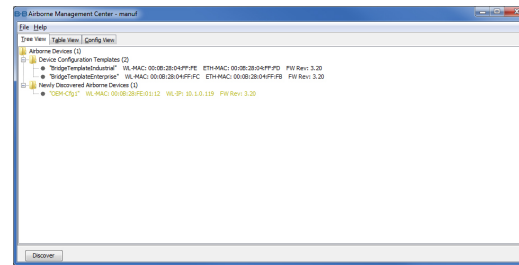
Run the Airborne Management Center (AMC) application. If you don't currently have AMC installed, you can install it from the included CD or download and install it from the B+B SmartWorx website. Just search for the model number and follow the links to download software from the Downloads section of the product page.

When AMC starts, it will request a login:



Select Group Name: "manuf" and enter Group Password: "dpac"

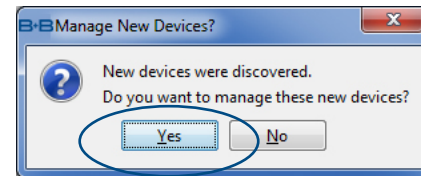
AMC will load and discover the attached device:



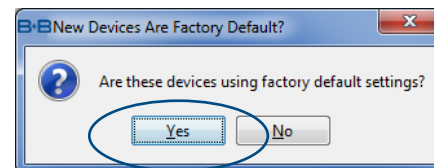
Note: You may be required to wait up to 180 seconds before the device is discovered and displayed.

## 5 Manage The Device

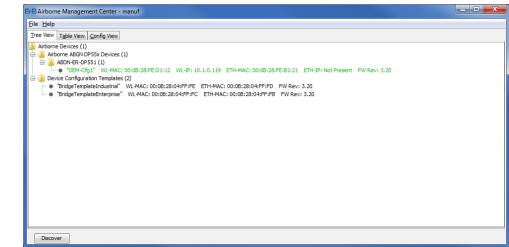
AMC will ask if you want to manage the new device, select 'Yes':



Select 'Yes' to indicate device is using Factory Default settings:

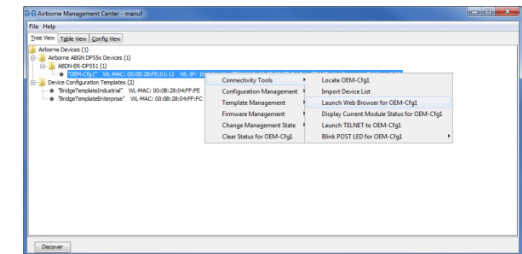


AMC will display the found Airborne device(s):



Tip: To easily convert a Direct Ethernet device to a bridge, use the Bridge Templates in AMC. For additional information, search the B+B Knowledge base for "bridge templates".

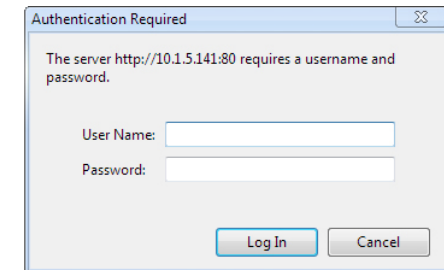
Right click the device's name. Under "Connectivity Tools" choose "launch Web browser for OEM-Cfg1." This will open the device's browser-based management window.



## 6 Configure Your Device

Login to web interface:

Username "dpac"  
Password: "dpac"



Continue configuration via the Web interface. Start with the Configuration -> Express Setup page.

Note: Use the Help features of the interface to help you configure the device. When you are done configuring the device, press 'Commit' to save the changes, then 'Restart' to restart the device. You can optionally press 'Reload' if you have further configuration changes to make.

(Continued)