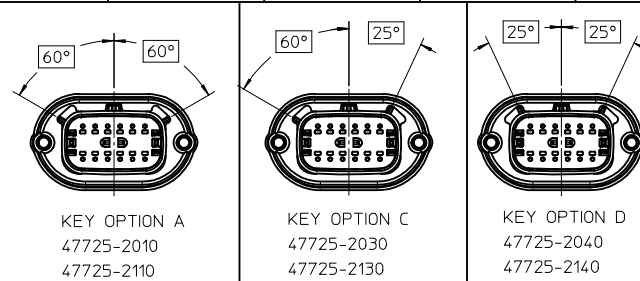
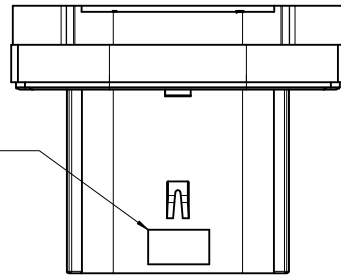
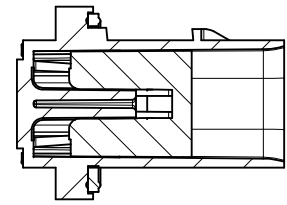


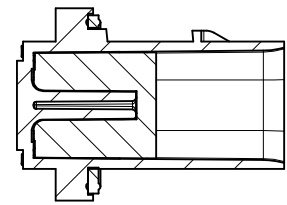
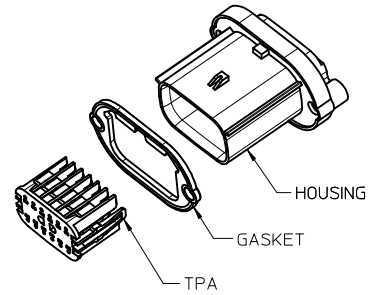
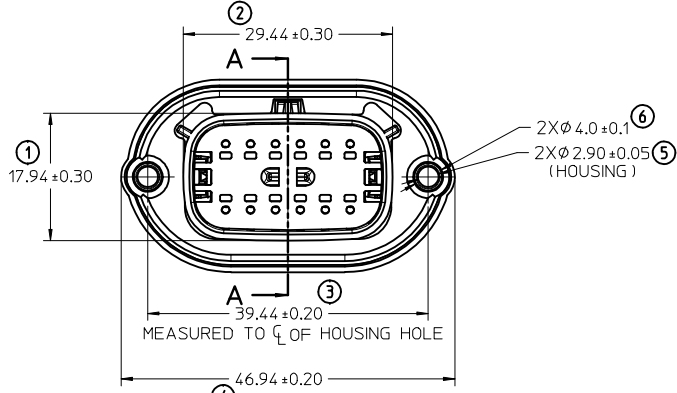
TRACEABILITY INFORMATION
LOCATION IN THIS AREA



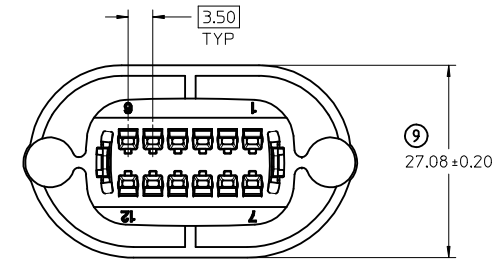
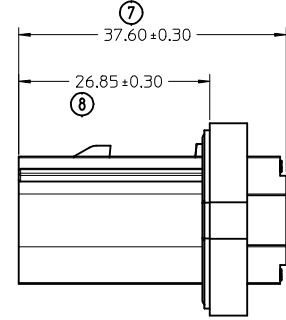
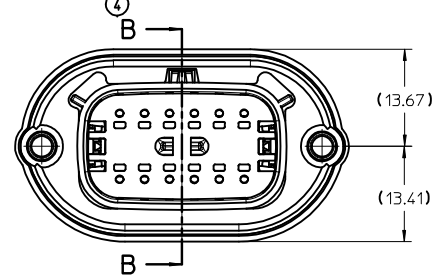
ASSY P/N	KEY OPTION	DESCRIPTION	COLOR
47725-2010	A	HOUSING	BLACK
		GASKET	BLACK
		TPA	NATURAL
47725-2030	C	HOUSING	DARK GRAY
		GASKET	BLACK
		TPA	NATURAL
47725-2040	D	HOUSING	STONE GRAY
		GASKET	BLACK
		TPA	NATURAL
47725-2110	A	HOUSING	BLACK
		GASKET	GREY
		TPA	NATURAL
47725-2130	C	HOUSING	DARK GRAY
		GASKET	GREY
		TPA	NATURAL
47725-2140	D	HOUSING	STONE GRAY
		GASKET	GREY
		TPA	NATURAL



SECTION A-A
(TPA SHOWN IN PRE-LOCK POSITION)
SEE NOTE 3



SECTION B-B
(TPA SHOWN IN FULL-LOCK POSITION)
FOR REFERENCE ONLY



- NOTES: UNLESS OTHERWISE SPECIFIED.
- SHALL CONFORM TO MOLEX PRODUCT SPECIFICATION: PS-47725-000
 - USAGE OF THE PRODUCT SHALL BE IN COMPLIANCE TO MOLEX APPLICATION SPECIFICATION: AS-47725-001
 - SHIPPED WITH GASKET AND TPA IN PRE-LOCK POSITION
 - FOR ESSENTIAL PARTS (TERMINALS, WIRES ETC.) AND INSTALLATION TO COMPLETE ASSEMBLY SEE MOLEX PRODUCT SPECIFICATION: PS-33472-000.
 - FOR TERMINAL SERVICING TOOL SEE MOLEX DOCUMENT: ATS-638131500, GM PART NUMBER J-38125-217
 - DESIGNED TO MATE WITH 12 WAY RECEPTACLE CONNECTOR ASSEMBLY PER SD-33472-121. FOR MATING CONNECTOR ASSEMBLY INFORMATION SEE MOLEX PRODUCT SPECIFICATION: PS-33472-000

INSPECTION NUMBER LOG
LAST NUMBER USED: 9
ADDED:
REMOVED:

ENTER DESCRIPTION	QUALITY SYMBOLS	GENERAL TOLERANCES (UNLESS SPECIFIED)		DIMENSION STYLE		SCALE	DESIGN UNITS	THIRD ANGLE PROJECTION	
		mm	INCH	MM ONLY	2:1	METRIC	THIRD ANGLE PROJECTION		
EC NO: GCAZ010-0088 DRAWN: CDZHANG 2010/03/18 CHKD: JLOHMAN 2010/03/18 APPR: GGLEE 2010/04/16	▽=0	4 PLACES ±---	±---	DRAWN BY	DATE	TITLE	GENERAL MX150 2X6 PANEL MOUNT CONNECTOR	MATERIAL NO.	
	▽=0	3 PLACES ±---	±---	CDZHANG	2010/03/18				
A	▽=0	2 PLACES ±---	±---	CHECKED BY	DATE	DOCUMENT NO.	SD-47725-210	SHEET NO. 1 OF 1	
	▽=0	1 PLACE ±0.1	±---	JLOHMAN	2010/03/18				
		ANGULAR ± 3°		APPROVED BY	DATE	MOLEX INCORPORATED			
		DRAFT WHERE APPLICABLE MUST REMAIN WITHIN DIMENSIONS		GGLEE	2010/04/13	SEE CHART			
				THIS DRAWING CONTAINS INFORMATION THAT IS PROPRIETARY TO MOLEX INCORPORATED AND SHOULD NOT BE USED WITHOUT WRITTEN PERMISSION					