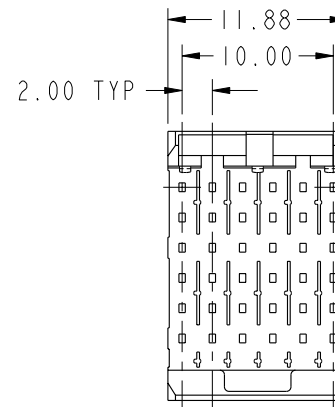
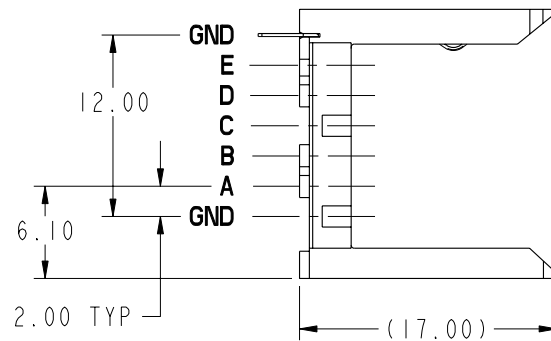
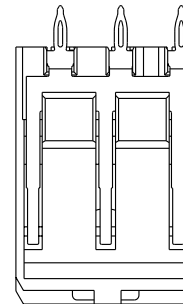




This document is the property of and embodies CONFIDENTIAL and PROPRIETARY information of FCI. No part of the information shown on this document may be used in any way or disclosed to others without the written consent of FCI. Copyright FCI.

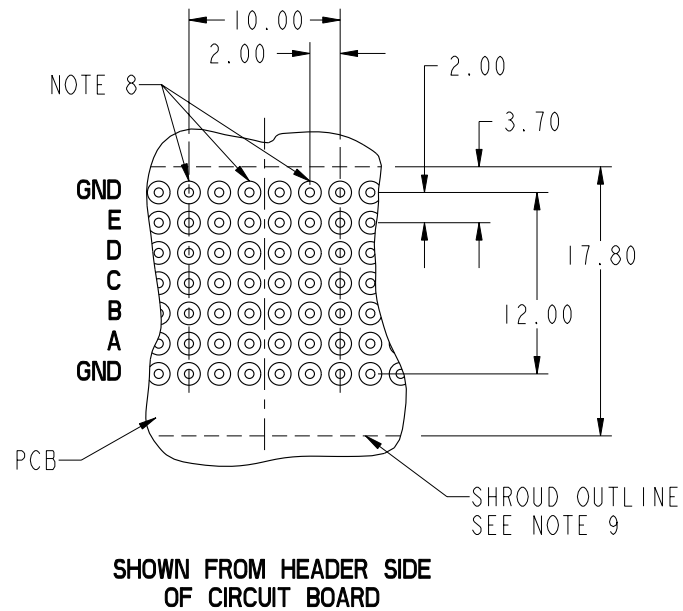
PRODUCT NUMBER	GROUND SPRING CONTACT FINGERS PLATING PERFORMANCE LEVEL	GROUND SPRING EON PRESS FIT TAIL PLATING
55831-101	TELCORDIA CO	STANDARD (SnPb)
55831-101LF		LEAD FREE (Sn)
55831-501	TELCORDIA UE	STANDARD (SnPb)
55831-501LF		LEAD FREE (Sn)



mat'l code SEE NOTE 5				tolerances unless otherwise specified		CUSTOMER	FCI www.fciconnect.com	
ltr	ecn no.	dr	date	linear	0.X ±0.3	COPY	title VERTICAL SIGNAL HDR SHROUD 5 ROW P.F. 30 POS. STANDARD	
A	V21232	CGD	2002-07-26		0.XX ±0.13	projection		
B	V06-0492	DCH	2006-05-23		.XXX ±.051			
C	V06-0045	DPU	2006-06-30	angles	0° ±2°	product family METRAL 1000 code		
D	V07-0178	DCH	2007-04-17	dr	C. DAILY	2002-07-26	size	dwg no
E	V07-0693	HTB	2007-11-26	engr	M. STRAWSER	2002-07-26	A	55831
F	V08-0071	HTB	2008-02-07	chr	M. STRAWSER	2002-07-26		
				appd	M. STRAWSER	2002-07-26	1 of 3	
sheet index	revision sheet	F 1	F 2	F 3			cage code 22526	

PRODUCT NUMBER
SEE SHEET 1

PRESS-FIT HOLES	OPTION 1
HOLE DIAMETER AFTER PLATING	0.65-0.80
DRILLED HOLE	0.81-0.86 (0.85 DRILL)
COPPER PLATING	0.025 MIN
SnPb PLATING	0.005-0.015



mat'l code SEE NOTE 5		tolerances unless otherwise specified		CUSTOMER		FCj www.fciconnect.com	
ltr	ecm no.	dr	date	linear	0.X ±0.3	COPY	
F				linear	0.XX ±0.13	projection	
				angles	.XXX ±.051		
				angles	0° ±2°		
		dr	C. DAILY	2002-07-26	MM		product family METRAL 1000
		enr	M. STRAWSER	2002-07-26	← MM →		code 213
		chr	M. STRAWSER	2002-07-26	scale		size
		appd	M. STRAWSER	2002-07-26	2:1		dwg no 55831
sheet index	revision sheet						sheet 2

This document is the property of and embodies
 CONFIDENTIAL and PROPRIETARY information of FCJ.
 No part of the information shown on this
 document may be used in any way or disclosed
 to others without the written consent of FCJ.
 Copyright FCJ.

PRODUCT NUMBER
SEE SHEET 1

NOTES:

1. SEE APPLICATION SPECIFICATION GS-20-010 FOR INFORMATION ON AVAILABLE TOOLING, CIRCUIT BOARD DESIGN CONSIDERATIONS, REPAIR PROCEDURES AND PRODUCT OFFERINGS.
2. SEE FCI PUBLICATION 950511-028 FOR "ELECTRICAL PERFORMANCE DATA FOR DIFFERENTIAL APPLICATIONS."
3. SEE FCI PUBLICATION 950511-029 FOR "ELECTRICAL PERFORMANCE DATA FOR SINGLE-ENDED APPLICATION."
4. UNLESS OTHERWISE SPECIFIED, ALL DIMENSIONS AND TOLERANCES ARE IN ACCORDANCE WITH ASME Y14.5, 1994
5. HOUSING MATERIAL: LIQUID CRYSTAL POLYMER, FILLED WITH PTFE (TEFLON), FLAME RETARDANT PER UL 94-V0.
GROUND SPRING MATERIAL: PHOSPHER BRONZE
6. PLATING INFORMATION: SEE TABLE
7. THE MIN PCB THICKNESS FOR REAR PLUG-UP APPLICATIONS IS 2.9mm SINCE THE COMPLIANT SECTIONS OF THE GROUND SPRING OF THE HEADER DIRECTLY OPPOSE THE GROUND SPRING OF THE SHROUD.
8. THESE HOLES ARE NEEDED FOR REAR PLUG-UP DESIGNS USING A SHROUD. ALL OTHER HOLES ARE FOR THE HEADER.
9. THE 'SHROUD OUTLINE' IS THE MIN OUTLINE REQUIRED. TO DETERMINE THE OUTLINE NECESSARY TO PERMIT THE VARIOUS TYPES OF REPAIR OPERATIONS, SEE APPLICATION SPECIFICATION GS-20-010.
10. CURRENT RATING: 1 AMP PER PIN
11. TEMPERATURE RANGE: -55°C TO +105°C
12. PRODUCTS WHERE THE PART NUMBERS ENDS IN LF MEET EUROPEAN UNION DIRECTIVES AND OTHER COUNTRY REGULATIONS AS DESCRIBED IN GS-22-008.
13. ALL PRODUCTS WILL WITHSTAND EXPOSURE TO 245°C FOR 40 SECONDS IN A CONVECTION, INFRA-RED OR VAPOR PHASE REFLOW OVEN.
FOR LEAD FREE PART NUMBERS, ADD 'LF' SUFFIX.
EXAMPLE: 55831-X01LF



This document is the property of and embodies CONFIDENTIAL and PROPRIETARY information of FCI. No part of the information shown on this document may be used in any way or disclosed to others without the written consent of FCI. Copyright FCI.

mat'l code		SEE NOTE 5		tolerances unless otherwise specified		CUSTOMER		www.fciconnect.com	
ltr	ecr no.	dr	date	linear	0.X ±0.3		COPY		title VERTICAL SIGNAL HDR SHROUD 5 ROW P.F. 30 POS. STANDARD
F					0.XX ±0.13		projection		
					.XXX ±.051				
				angles	0° ±2°				
				dr	C. DAILY	2002-07-26	MM		product family
				enrg	M. STRAWSER	2002-07-26			METRAL 1000
				chr	M. STRAWSER	2002-07-26	scale		code
				appd	M. STRAWSER	2002-07-26	2:1		213
sheet	revision						A		sheet
index	sheet						55831		3