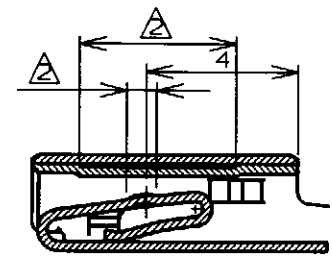
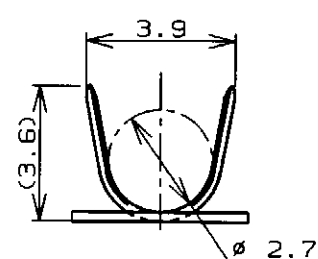
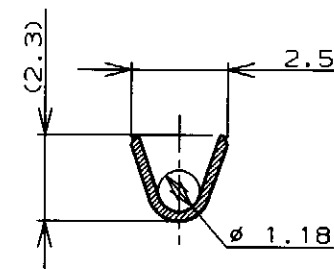
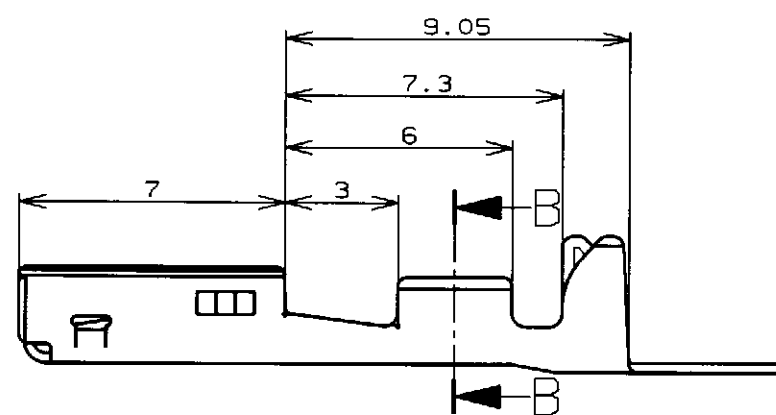
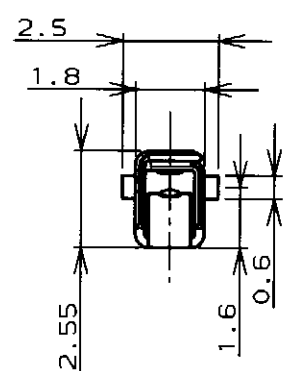
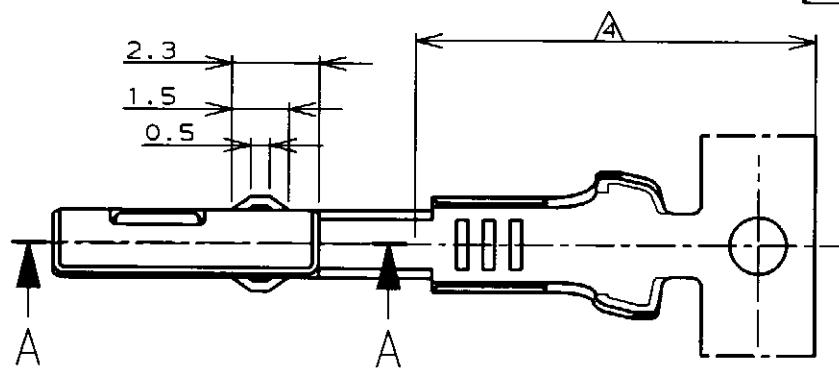
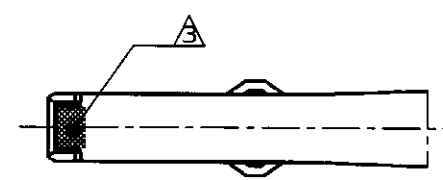


P	LTR	DESCRIPTION	ECN	DATE	DWN	APVD
0		DRAWN	FJ00-4529-96	4/24'96	HY	NS
A		REVISED	FJ00-1031-97	29 AUG 97	my	LS



SECT. A-A



注記;
 1. 適用電線: AVSS,CAVS 0.3~0.5mm²
 △ 金めっき範囲(接触面のみ).
 ▲ 識別用金めっき.
 △ すすめっき範囲.

NOTES;
 1. APPLICABLE WIRE RANGE,
 AVSS,CAVS 0.3~0.5mm²
 △ GOLD PLATING AREA (CONTACT SIDE ONLY)
 ▲ GOLD PLATING FOR DISCERNMENT
 △ TIN PLATING AREA

THIS DRAWING IS A CONTROLLED DOCUMENT FOR AMP INCORPORATED. IT IS SUBJECT TO CHANGE AND THE CONTROLLING ENGINEERING ORGANIZATION SHOULD BE CONTACTED FOR THE LATEST REVISION.		DWN	H. YAMAGAMI	4/24'96
DIMENSIONS: 単位: 概 mm		CHK	T. KOHNO	4/25'96
TOLERANCES UNLESS OTHERWISE SPECIFIED 一般公差 10% ±0.2 30% >10 ±0.25 100% >30 ±0.3 ANGLE: ±3°		APVD	N. SAI	4/25'96
MATERIAL 材料: Cu ALLOY 銅合金		PRODUCT SPEC	製品規格	
FINISH 仕上: SEE TABLE 表参照		APPLICATION SPEC	取付適用規格	
WEIGHT		0.3g		
CUSTOMER DRAWING		A3 00779		
DRAWING NO		316833		
SCALE		5-1		
SHEET		1 OF 1		
REV		A		

SELECTIVE GOLD/TIN (部分金めっき/すすめっき) 316833-2
 FINISH (仕上) PART NUMBER (型番)
AMP 日本エー・エム・ピー株式会社
 Kawasaki, Japan

.040 III SEALED CONTACT, RECEPTACLE (S) Au
 SIZE: A3 CAGE CODE: 00779 DRAWING NO: 316833