
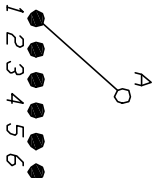


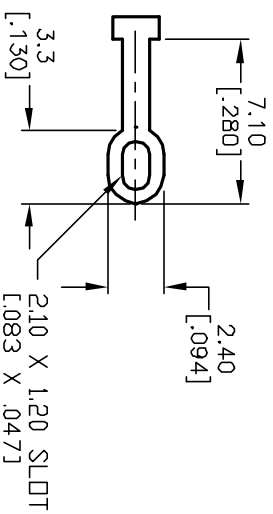
NOTES:

- NOTES:
1. ALL DIMENSION IN MM [INCH]
 2. GENERAL TOLERANCE: X.X=±0.4
X.XX=±0.25
 3. TERM. NOS. FOR REF. ONLY
 4. CONTACT RATING SWITCHING: 150mA, 250V AC/DC
350mA, 110V AC/DC
 5. CONTACT RATING (NON SWITCHING): 5A
 6. OPERATING FORCE: 425±100 CM/STANDARD
 7. OPERATING TEMP: -30° to 85°C
 8. CIRCUIT SP: 6 POSITIONS, 30° INDEX.
 9. DIELECTRIC STRENGTH: 1000V RMS min. @Sea Level
 10. DESIGNATE MAJOR DIMENSIONS
 11. SUPPLIED HARDWARE: LOCK NUT AND WASHER (NOT SHOWN).
- 
- CON
Timing



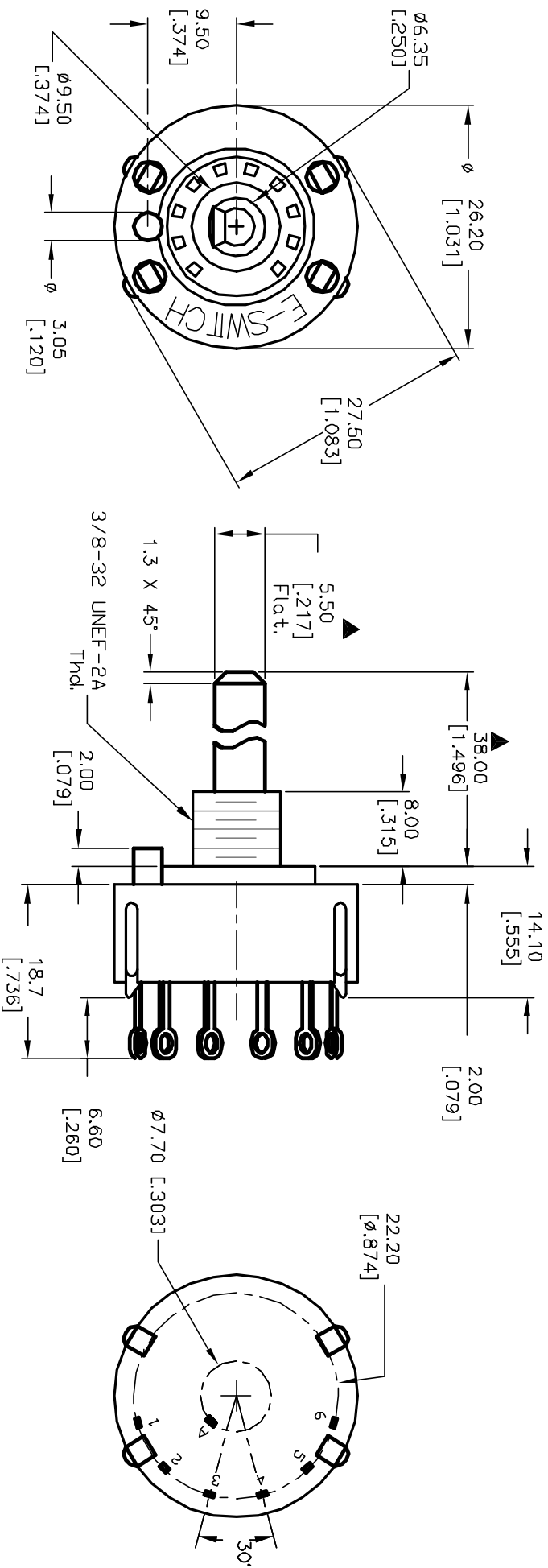
CONTACT CONFIGURATION

Timing: Non-Shorting (BBM)



TERMINATION DETAIL

SCALE 2X



					TITLE		
					KC-16-A-(30.0mm) 01-N-L-S		
B	12615	REVISED DESC. PER CATALOG	12/5/02	CJB			
REV.	ECN No.	DESCRIPTION	DATE	CHKD			
THE INFORMATION CONTAINED IN THIS DOCUMENT IS PROPRIETARY TO E-SWITCH AND IS NOT TO BE COPIED OR TRANSFERRED							
SCALE		DATE	DR	DWG	REV		
1.5:1		5/29/01	CJB	G510706	B		