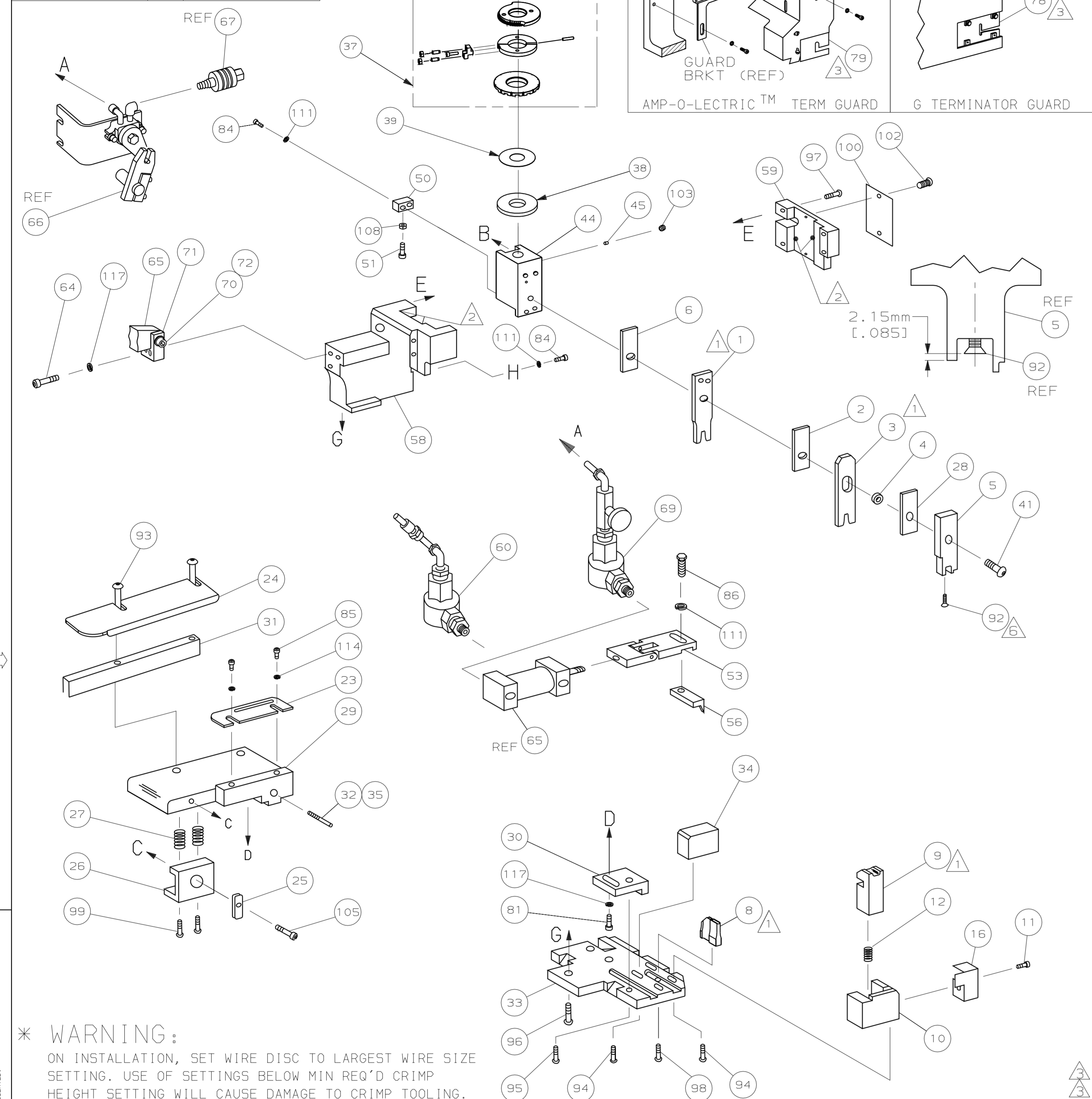


PART NUMBER	REV	FIRST USED
1855066-1	A	122500-1
1855066-2	A	565435-5
1855066-3	A	354500-1

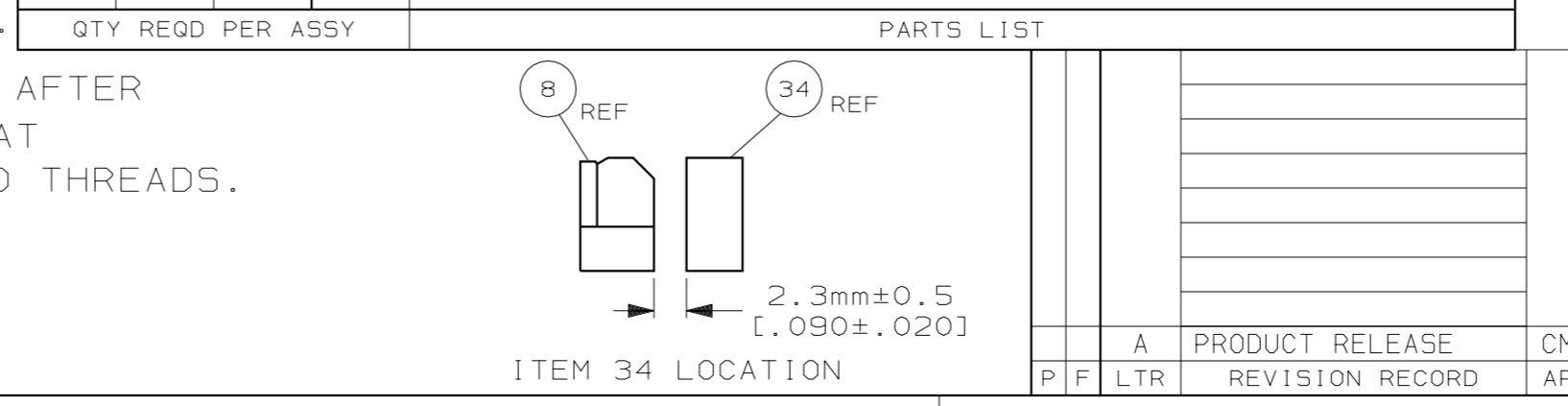


*** WARNING:**
ON INSTALLATION, SET WIRE DISC TO LARGEST WIRE SIZE SETTING. USE OF SETTINGS BELOW MIN REQ'D CRIMP HEIGHT SETTING WILL CAUSE DAMAGE TO CRIMP TOOLING.

- ① RECOMMENDED SPARE PARTS.
- ② GREASE LIGHTLY.
- ③ GUARD MUST BE IN PLACE WHEN OPERATING APPLICATOR IN A BENCH MACHINE.
- ④ SEE DRAWING FOR COMPONENTS
- ⑤ THIS APPLICATOR APPLIES TERMINAL WITH A SEAL.
- ⑥ APPLY TORQ-SEAL IN ALLEN SOCKET TO FILL HOLE AFTER FLAT HD HAS BEEN ADJUSTED TO CORRECT HEIGHT AT QUALIFICATION. APPLY PN 1-23419-5 LOC-TITE TO THREADS.

TERMINAL NAME: P-NUT SOCKET		AMP TERMINAL AMP CRIMP SPECS	
REF SET	CRIMP HEIGHT	WIRE SIZE	
C5	1.24 ±0.05mm [.049 ±.002]	18 awg	
C8	1.19 ±0.05mm [.047 ±.002]	20 awg	
-	NOT	USED	
-	NOT	USED	
CRIMP	SIZE	TYPE	RANGE
WIRE	1.83mm [.072]	F	20-18 awg
INSUL	3.18mm [.125]	0	Ø2.9mm MAX

QTY	RECD	PER	ASSY	WIRE STRIP LENGTH	TERM APPL	SPEC	FEED	APPL INSTRUCTION	SET UP GAGE	LAYOUT	ITEM NO
1326857				3.0-3.4mm	NONE		19.05mm	408-8040	458637-1	-	129
1	1	1	-	A				217238-1		GENERAL INSTRUCTION PACKAGE	124
1	1	1	-	-				4088040		SF APPL INST 408-8040	123
3	3	3	-	A				21024-5		WASHER, LOCK (#10) ADJ BLOCK	117
2	2	2	-	A				21024-2		WASHER, LOCK (#4) ADJ BLOCK	114
4	4	4	-	A				21024-4		WASHER, LOCK (#8) STRIPPER	111
1	1	1	-	A				21018-5		NUT, HEX (NO. 6) HOLDDOWN	108
1	1	1	-	A				21989-8		SCR, SKT HD SHLDR 3/16 DIA X .250	105
1	1	1	-	A				21009-2		SCR, SKT SET (1/4-20x.25 LW) RAM	103
2	2	2	-	A				21017-2		SCR, DRIVE (#2x.19) ID PLATE	102
1	1	1	-	B				461264-5		PLATE, IDENTIFICATION	100
2	2	2	-	A				5-21006-6		SCR SET CUP POINT 10-32 X .75	99
1	1	1	-	A				22733-8		SCR, BHC (8-32x.38 LW) ANVIL	98
4	4	4	-	A				2-21002-9		SCR, BHC (10-32x.75) CAP	97
3	3	3	-	A				2-22733-8		SCR, BHC (1/4-20x.62) H5G	96
1	1	1	-	A				2-21002-7		SCR, BHC (10-32x.50) SG ADJ BLK	95
6	6	6	-	A				2-21002-2		SCR, BHC (8-32x.50) TERM H DWN	94
2	2	2	-	A				2-21002-4		SCR, BHC (8-32x.75)	93
1	1	1	-	A				1-21003-9		SCR, FHC (6-32x.38) DEP	92
1	1	1	-	A				2-22603-0		SCR, HEX HD (8-32x.31) FEED FINGER	86
2	2	2	-	A				1-21000-3		SCR, SHC (4-40x.25)	85
3	3	3	-	A				2-21000-7		SCR, SHC (8-32x.50) STRIPPER	84
1	1	1	-	A				3-21000-4		SCR, SHC (10-32x.38) SG ADJ BL	81
-	1	-	-	B				462992-7		GUARD ASSY	79
REF	-	-	-	B				679532-1		INSERT, GUARD	78



QTY	RECD	PER	ASSY	LEADMAKER	AIRFEED	DESCRIPTION	ITEM NO
-1							
-2				BENCH MODEL K	AIRFEED		
-3				BENCH MODEL G	AIRFEED		
1	1	1	-	A		21024-8	WASHER, LOCK 3/8
-	1	-	-	C		692655-5	AIR FEED VALVE ASSY
-	REF	-	-	A		24042-2	VALVE, SHUT OFF
-	REF	-	-	C		692655-6	AIR FEED VALVE ASSY
1	1	1	-	B		461065-1	AIR FEED ASSY (1 INCH)
2	2	2	-	A		3-21000-9	SCR, SHC (10-32x1.00) AIR ASSY
1	-	1	-	B		692655-7	AIR FEED VALVE ASSY
1	1	1	-	C		454220-1	CAP, RAM
1	1	1	-	D		454485-1	HOUSING
1	1	1	-	B		1-694433-3	PAWL, FEED
1	1	1	-	B		461062-1	FEED FINGER ASSY
1	1	1	-	A		811242-2	BUMPER, HOLDDOWN
1	1	1	-	A		690753-1	SPACER, TONKER
1	1	1	-	A		690191-1	PLUG, NYLON
1	1	1	-	C		455673-1	RAM
1	1	1	-	A		7-21002-9	BOLT, CRIMPER (5/16x1.00)
1	1	1	-	B		690125-1	SHIM SUB-ASSY
1	1	1	-	B		469367-9	SHIM
1	1	1	-	B		879103-2	FINE ADJUST HEAD SUDASSY
1	1	1	-	D		1-22281-8	SPRING, COMPRESSION
1	1	1	-	B		690786-6	SUPPORT, TERMINAL
1	1	1	-	D		455675-1	PLATE, BASE
3	3	3	-	A		8-21000-7	SCR, SHC (10-32x2.50)
1	1	1	-	B		1320908-3	SPACER, STRIP GUIDE
1	1	1	-	B		455689-1	BLOCK, STRIP GUIDE ADJ
1	1	1	-	C		1633087-1	STRIP GUIDE
1	1	1	-	C		455888-8	SPACER, FRONT SHEAR DEP
2	2	2	-	D		1-22284-0	SPRING, COMPRESSION
1	1	1	-	D		240792-5	DRAG
1	1	1	-	D		356835-1	LEVER DRAG
1	1	1	-	D		1320928-2	GUIDE, STRIP (REAR)
1	1	1	-	D		693855-1	GUIDE, STRIP (FRONT)
-	-	1	-	B		690472-2	STRIPPER
1	1	-	-	B		691353-1	STRIPPER
1	1	1	-	B		318563-1	GUARD, CHIP, FRONT
1	1	1	-	A		3-22280-3	SPRING, SHEAR
1	1	1	-	B		690461-2	STOP, SHEAR
1	1	1	-	C		1-690459-0	HOLDER, SHEAR (FRONT)
1	1	1	-	C		318707-1	SHEAR, FLOAT (FRONT)
1	1	1	-	C		3-1633116-2	ANVIL
1	1	1	-	C		455888-3	SPACER, CRIMPER
1	1	1	-	C		318701-1	DEPRESSOR, SHEAR (FRONT)
1	1	1	-	B		1-238011-0	SPACER, BLOCK CRIMPER
1	1	1	-	C		1-1583690-0	CRIMPER, INSULATION
1	1	1	-	C		455888-9	SPACER, CRIMPER
1	1	1	-	C		2-1633305-4	CRIMPER, WIRE

QTY	RECD	PER	ASSY	U/M	DWG SIZE	PART NO	DESCRIPTION	ITEM NO
-3	-2	-1	-	U/M				

THIS DRAWING IS A CONTROLLED DOCUMENT.

20

RELEASED FOR PUBLICATION
BY AMP INCORPORATED. ALL RIGHTS RESERVED.

THIS DRAWING IS UNRELEASABLE
COPYRIGHT 20

LOC
A
DIST
66

LEADMAKER BENCH MACHINE