

MICRO SWITCH

A DIVISION OF MINNEAPOLIS-HONEYWELL REGULATOR COMPANY
PRINCETON, ILLINOIS

FED. MFR. CODE 91929

SWITCH-BASIC

CATALOG LISTING

YZ-R

(M) YZ-R
ISSUE 6

REPLACES

PAGE 1 OF 1

RELEASE NO.

CHECK C 7 0 26 July 55

CHECK R 2 5 July 55

CHECK R 2 7 July 55

CHECK B.C.H. 27 July 55

YZ-R

M

DRAWING NUMBER

ISSUE 13

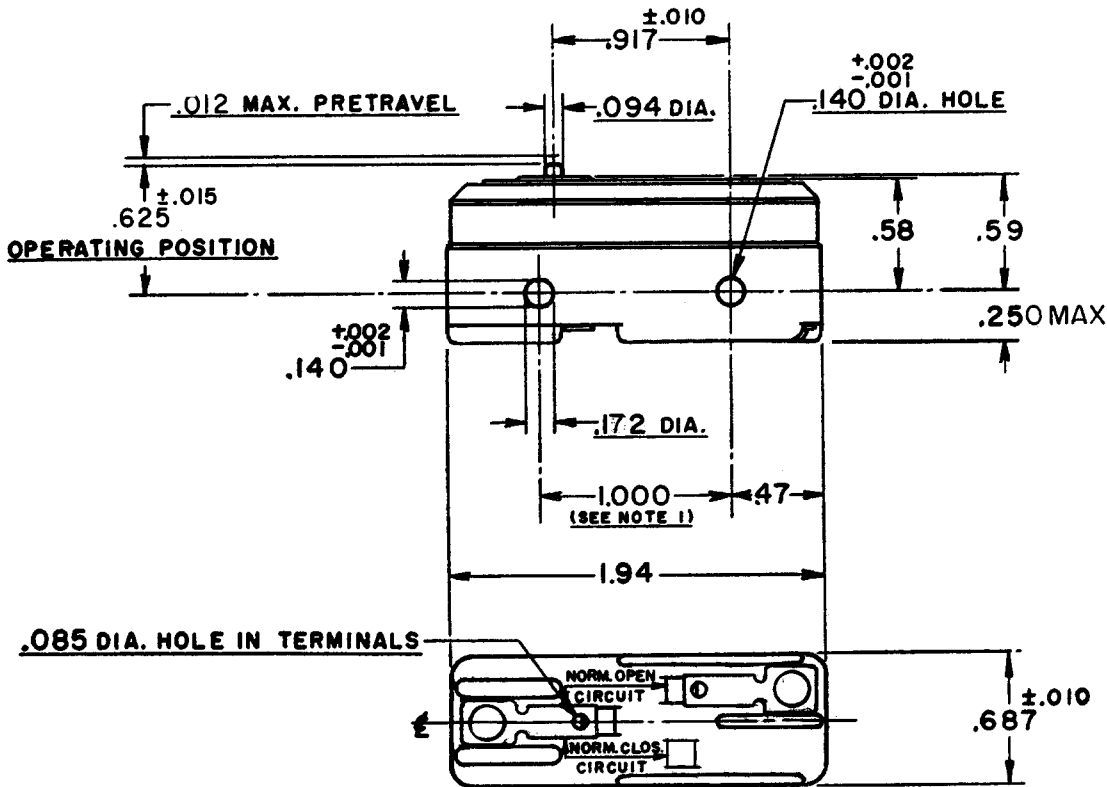
REVISIONS

A	CO.8520	W. D. W.	29 JUNE 55
B	CO23645	M B F	23 JAN 68
C	CO34162	D B W	3 JUL 75
D	CO046304	WJM	12 DEC 79
E	CO 58037	SMA	1 OCT 85
F	CO- 77592	DAW	15 AUG 94
G	CO- 94212-K	DLT	10 NOV 99

FORMTEK

DRAWN

74-86



NOTE -

1- MOUNTING HOLES WILL ACCEPT PINS OR SCREWS OF .139 MAX. DIA. ON 1.000 ±.002 CENTERS.

THIS DRAWING COVERS A PROPRIETARY ITEM AND IS THE PROPERTY OF MICRO SWITCH, A DIVISION OF HONEYWELL. THIS DRAWING IS NOT TO BE COPIED OR USED WITHOUT THE APPROVAL OF MICRO SWITCH.

CHARACTERISTICS

OPERATING FORCE-----7 - 9 OZ.
RELEASE FORCE-----4 OZ. MIN.
DIFFERENTIAL TRAVEL----.00020-.00035
OVERTRAVEL-----.005 MIN.

ELECTRICAL DATA

CONTACT ARRANGEMENT
S. P. N. O.

UNDERWRITERS' LAB. INC. LISTED RATING
-L103- 15 A-125, 250 OR 480 VAC
1/8 HP-125 VAC; 1/4 HP-250 VAC



SCALE FULL

DO NOT SCALE PRINT

UNLESS OTHERWISE SPECIFIED
DIMENSIONS ARE IN INCHES
TOLERANCES ARE:

ONE PLACE	(.0)	±.030
TWO PLACE	(.00)	±.015
THREE PLACE	(.000)	±.008
ANGLES		±

WEIGHT .050 LB.