

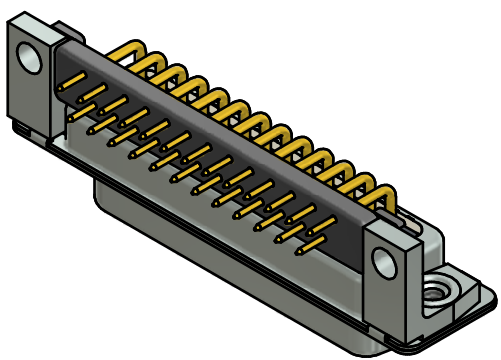
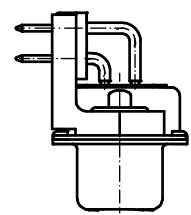
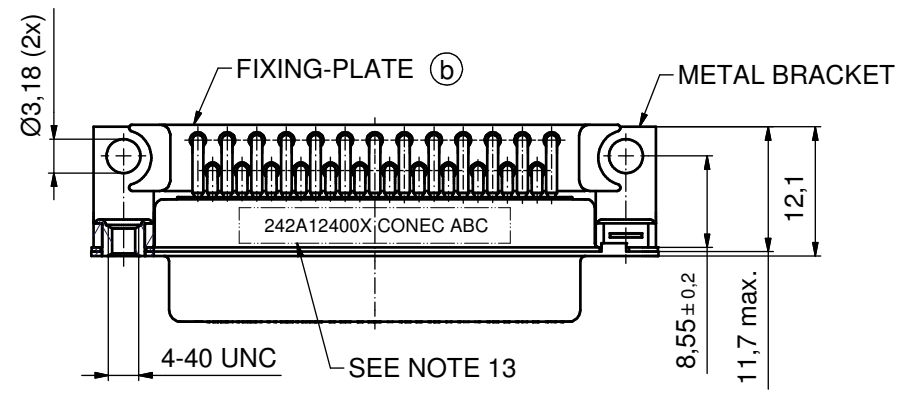
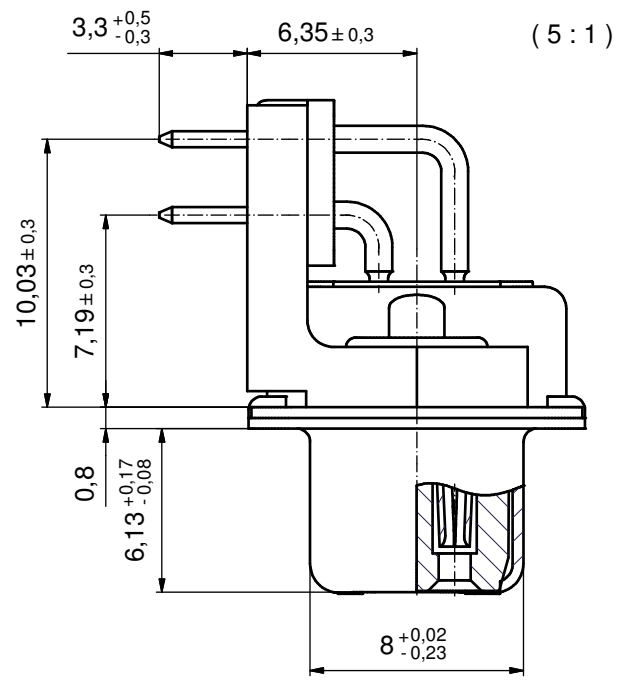
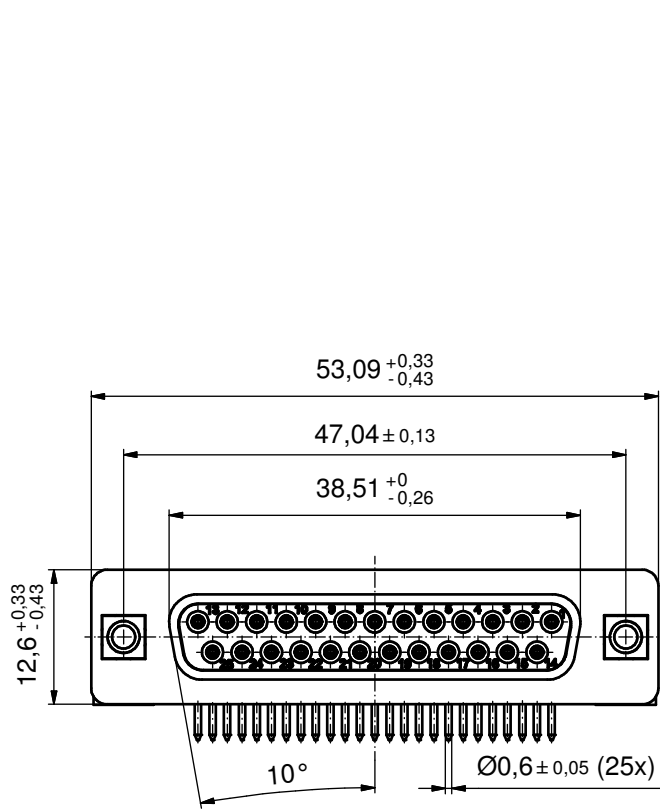
**NOTES:** (b)

1. RoHS COMPLIANT
2. FOR WAVESOLDERING ( SOLDER BATH TEMPERATURE 260°C FOR 5 SEC. AND SOLDER PREHEAT 100°C FOR 30 SEC.)
3. METALSHELLS: STEEL; min. 315µm TIN over 40-80µm NICKEL
4. INSULATOR: HIGH TEMPERATURE PLASTIC UL 94 V-0; BLACK
5. CONTACTS: COPPER ALLOY  
PLATING: GOLD FLASH over NICKEL
6. METAL BRACKETS: STEEL; min. 320µm TIN over 80µm NICKEL
7. THREADED INSERTS: COPPER ALLOY; min. 200µm TIN over 80µm NICKEL
8. FIXING PLATE: HIGH TEMPERATURE PLASTIC UL 94 V-0; BLACK
9. CAPACITANCE: 1300pF ± 20%
10. DIELECTRIC WITHSTANDING VOLTAGE: 424 VDC
11. MAXIMUM TORQUE VALUE FOR THREAD: 6 in.LB
12. CONNECTOR IS PART MARKED: 242A12380X CONEC ABC

Directive 2002/95/EC RoHS compliant

THIS DRAWING MAY NOT BE COPIED OR REPRODUCED IN ANY WAY, AND MAY NOT BE PASSED ON TO A THIRD PARTY WITHOUT WRITTEN PERMISSION. OWNERSHIP AND COPYRIGHT OF CONEC GmbH DO NOT ALTER CAD DRAWING BY HAND	tolerance		dim. in mm		scale: 2:1 (5:1)	
					material: SEE NOTES	
			date		name	
			drawn 01.08.01		Parei	
			appd. 01.08.01		Mickenbecker	
		norm		DIN 41652		
		d-old				
3 x b		A3838	14.12.10	K.H.	title: D-SUB FILTER FEMALE 90° 9pos. SOLDER PIN ANGLED 0.318inch with threaded insert and metal bracket	
a		Origin			dwg no: 24K1A154A	
rev.		description	date	name		
						DIN-A3
						(b) sh: 1/6
						part no: 242A12380X





**NOTES:** (b)

1. RoHS COMPLIANT
2. FOR WAVESOLDERING ( SOLDER BATH TEMPERATURE 260°C FOR 5 SEC. AND SOLDER PREHEAT 100°C FOR 30 SEC.)
3. METALSHIELDS: STEEL; min. 315µin TIN over 40-80µin NICKEL
4. INSULATOR: HIGH TEMPERATURE PLASTIC UL 94 V-0; BLACK
5. CONTACTS: COPPER ALLOY  
PLATING: GOLD FLASH over NICKEL
6. METAL BRACKETS: STEEL; min. 320µin TIN over 80µin NICKEL
7. THREADED INSERTS: COPPER ALLOY; min. 200µin TIN over 80µin NICKEL
8. FIXING PLATE: HIGH TEMPERATURE PLASTIC UL 94 V-0; BLACK
9. CAPACITANCE: 1300pF ± 20%
10. DIELECTRIC WITHSTANDING VOLTAGE: 424 VDC
11. P.C.B. HOLE DRILLINGS ON SHEET 4
12. MAXIMUM TORQUE VALUE FOR THREAD: 6 in.LB
13. CONNECTOR IS PART MARKED: 242A12400X CONEC ABC

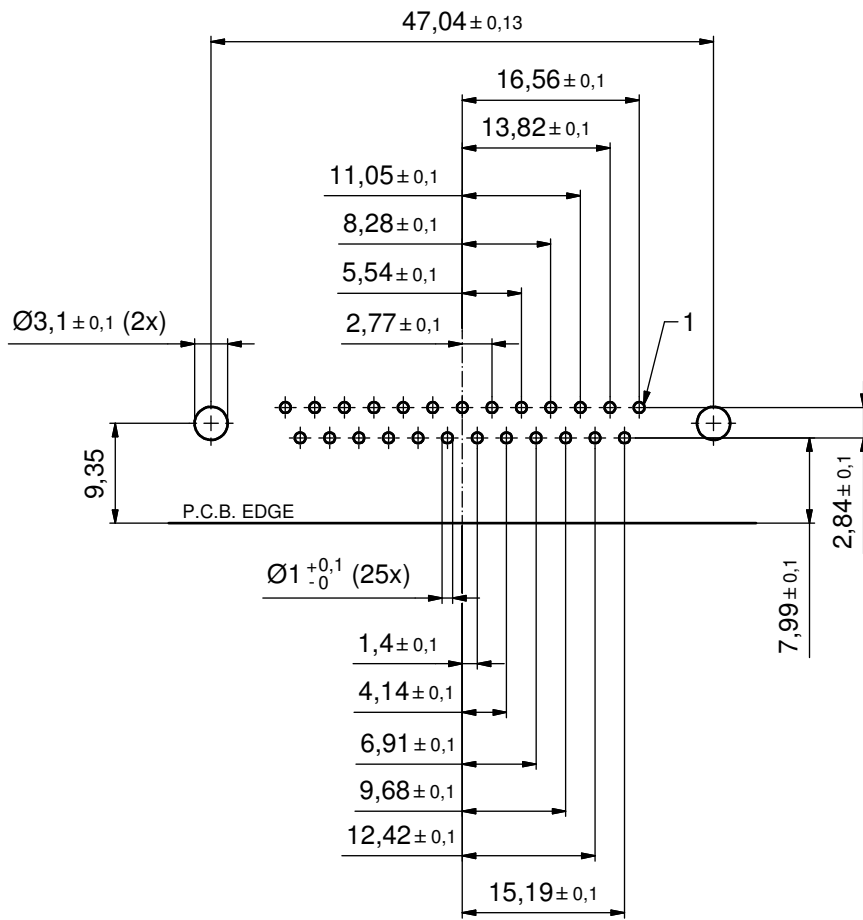
Directive 2002/95/EC RoHS compliant

THIS DRAWING MAY NOT BE COPIED OR REPRODUCED IN ANY WAY, AND MAY NOT BE PASSED ON TO A THIRD PARTY WITHOUT WRITTEN PERMISSION. OWNERSHIP AND COPYRIGHT OF CONEC GmbH DO NOT ALTER CAD DRAWING BY HAND	tolerance		dim. in mm		scale: 2:1 (5:1)	
					material: SEE NOTES	
	date	name		title:		
	drawn 01.08.01	Parei		D-SUB FILTER FEMALE 90°		
appd. 01.08.01	Mickenbecker		25pos. SOLDER PIN ANGLED 0.318inch			
norm	DIN 41652		with threaded insert and metal bracket			
d-old			dwg no:		DIN-A3	
3 x b	A3838	14.12.10	K.H.	24K1A154A (b)		
a	Origin			sh: 3/6		
rev.	description	date	name	part no: 242A12400X		

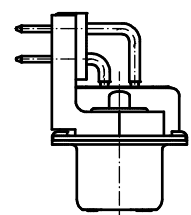
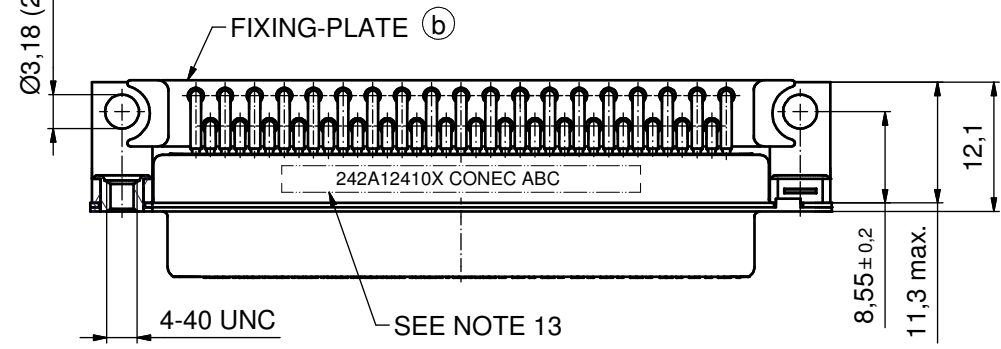
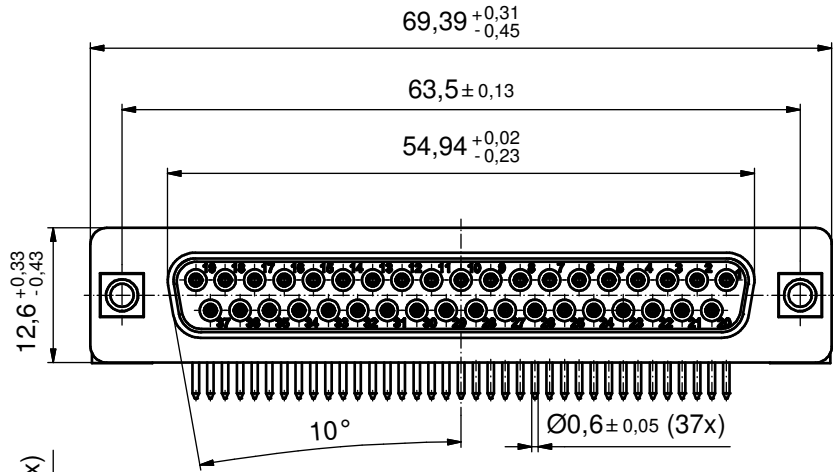
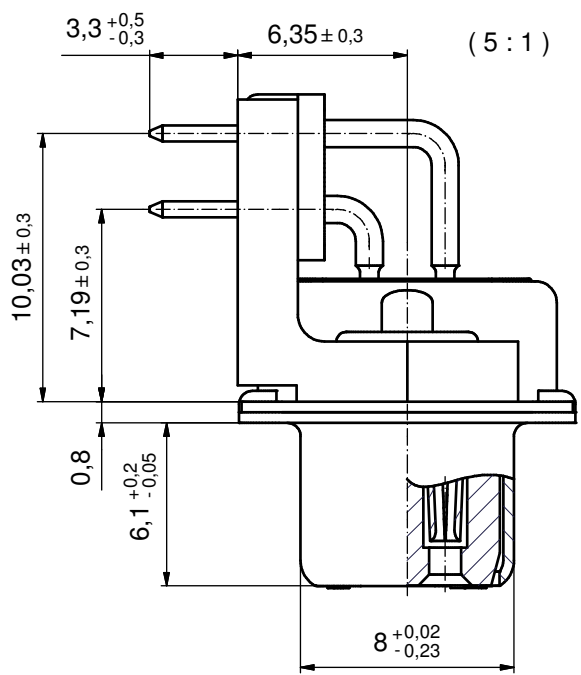
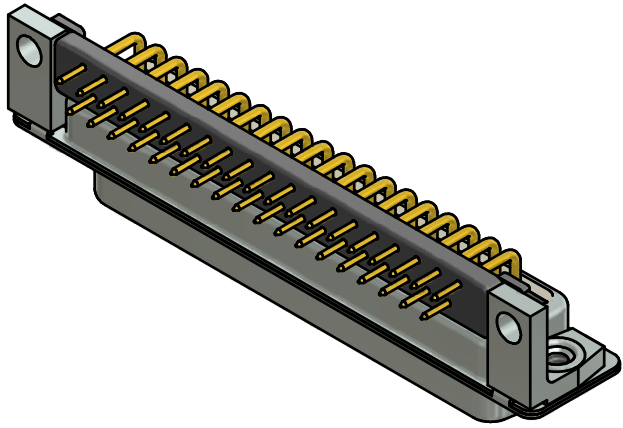


# P.C.B. HOLE DRILLINGS

( P.C.B. TOP SIDE )



THIS DRAWING MAY NOT BE COPIED OR REPRODUCED IN ANY WAY, AND MAY NOT BE PASSED ON TO A THIRD PARTY WITHOUT WRITTEN PERMISSION. OWNERSHIP AND COPYRIGHT OF CONEC GmbH DO NOT ALTER CAD DRAWING BY HAND				tolerance		scale: 2:1	
				date	name	material: SEE SHEET3	
				drawn	01.08.10	Perei	title: <b>P.C.B. HOLE DRILLINGS</b> D-SUB Filter Female 25pos. 0.318inch with threaded insert and metal bracket
				appd.	01.08.10	Mickenbecker	
				norm			
				d-old			
	a	Origin		<b>CONEC</b> <sup>®</sup>			dwg no:
rev.	description	date	name				24K1A154A
						part no:	SEE SHEET3



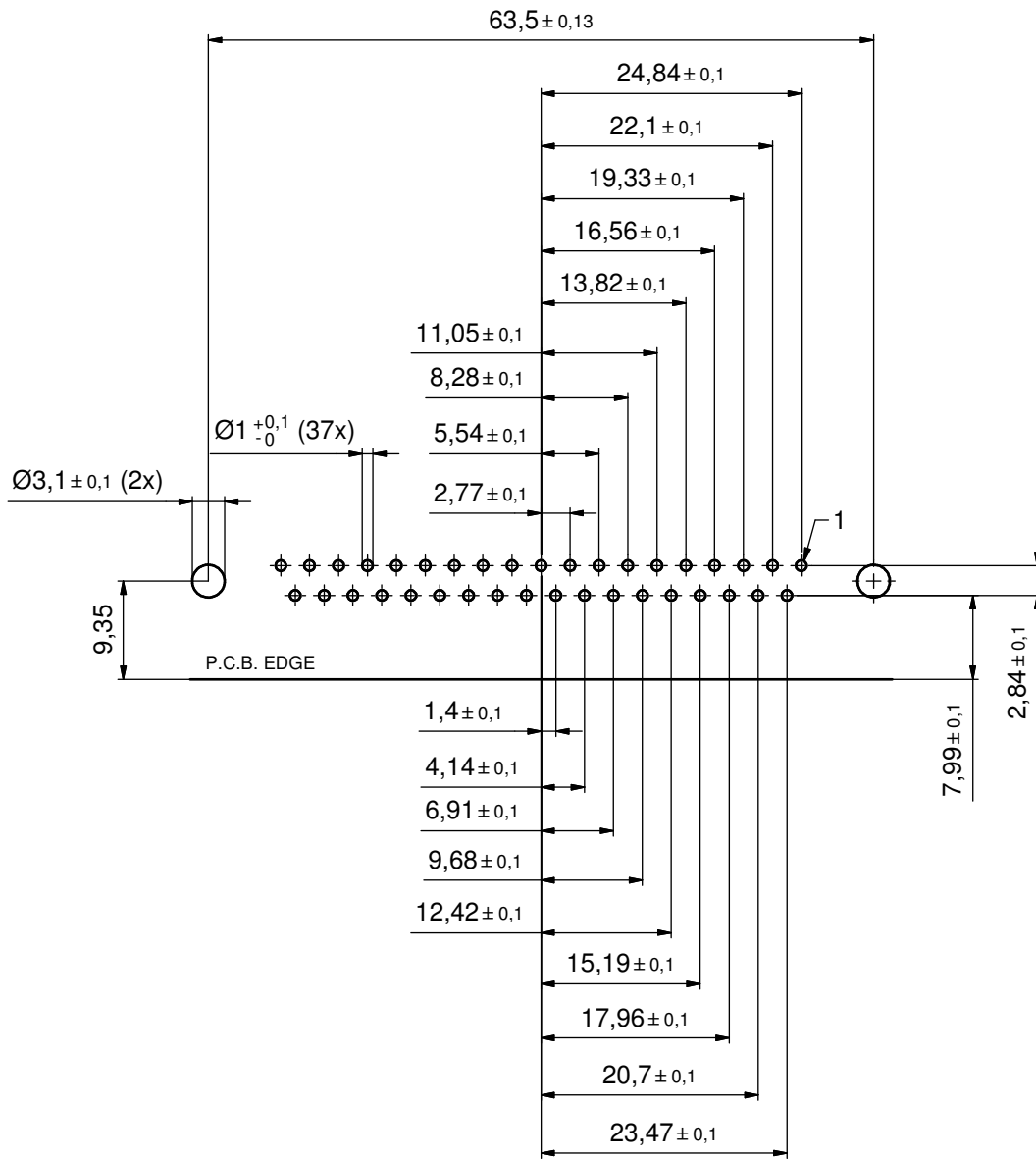
- NOTES:** (b)
1. RoHS COMPLIANT
  2. FOR WAVESOLDERING ( SOLDER BATH TEMPERATURE 260°C FOR 5 SEC. AND SOLDER PREHEAT 100°C FOR 30 SEC.)
  3. METALSHELLS: STEEL; min. 315µin TIN over 40-80µin NICKEL
  4. INSULATOR: HIGH TEMPERATURE PLASTIC UL 94 V-0; BLACK
  5. CONTACTS: COPPER ALLOY  
PLATING: GOLD FLASH over NICKEL
  6. METAL BRACKETS: STEEL; min. 320µin TIN over 80µin NICKEL
  7. THREADED INSERTS: COPPER ALLOY; min. 200µin TIN over 80µin NICKEL
  8. FIXING PLATE: HIGH TEMPERATURE PLASTIC UL 94 V-0; BLACK
  9. CAPACITANCE: 1300pF ± 20%
  10. DIELECTRIC WITHSTANDING VOLTAGE: 424 VDC
  11. P.C.B. HOLE DRILLINGS ON SHEET 6
  12. MAXIMUM TORQUE VALUE FOR THREAD: 6 in.LB
  13. CONNECTOR IS PART MARKED: 242A12410X CONEC ABC

Directive 2002/95/EC RoHS compliant

THIS DRAWING MAY NOT BE COPIED OR REPRODUCED IN ANY WAY, AND MAY NOT BE PASSED ON TO A THIRD PARTY WITHOUT WRITTEN PERMISSION. OWNERSHIP AND COPYRIGHT OF CONEC GmbH DO NOT ALTER CAD DRAWING BY HAND					tolerance	dim. in mm	scale:	2:1 (5:1)
					date		name	material:
					drawn	28.09.01	Parei	title: <b>D-SUB FILTER FEMALE 90°</b> 37pos. SOLDER PIN ANGLED 0.318inch with threaded insert and metal bracket
					appd.	28.09.01	Mickenbecker	
				norm				
				d-old			dwg no:	
3 x b	A3838	15.12.10	K.H.					DIN-A3
a	Origin						part no:	24K1A154A
rev.	description	date	name				part no:	242A12410X

# P.C.B. HOLE DRILLINGS

( P.C.B. TOP SIDE )



Directive 2002/95/EC RoHS compliant

THIS DRAWING MAY NOT BE COPIED OR REPRODUCED IN ANY WAY, AND MAY NOT BE PASSED ON TO A THIRD PARTY WITHOUT WRITTEN PERMISSION. OWNERSHIP AND COPYRIGHT OF CONEC GmbH DO NOT ALTER CAD DRAWING BY HAND				tolerance	 dim. in mm	scale: 2:1	
				date		name	material: SEE SHEET 5
				drawn	28.09.01	Perei	<b>P.C.B. HOLE DRILLINGS</b> D-SUB Filter Female 37pos. 0.318inch with threaded insert and metal bracket
				appd.	28.09.10	Mickenbecker	
				norm			
				d-old			dwg no:
a	Origin					24K1A154A	DIN-A3
rev.	description	date				name	part no: