

Features

- Low Loss
- High Rejection
- Low Ripple

Description

Surface mount, silver (Ag) coated ceramic filter. Developed for use in 900 MHz Infrastructure Applications.

Weight: 1.27 grams typical

Material: Filter is composed of a ceramic block plated with Ag.

Filter complies with RoHS standards.



Electrical Specifications

Parameter	Frequency (MHz)	Typical @ 25°C	Specificaitaion @ 25°C	Spec. over -40°C to +85°C
Electrical Response				
Passband Insertion Loss	870 - 915	-2.5	-3	-3.2
Passband Return Loss @ Port 1	870 - 915	-12	-10	-10
Passband Return Loss @ Port 2	870 - 915	-12	-10	-10
Passband Ripple	870 - 915	1	1.9	2
Attenuation:	836.5	-22	20	20
	926	-22	20	20

Note: Supplier shall test each filter to the critical electrical specifications of the above table. Any subsequent audits may deviate from in value due to measurement repeatability among different test systems. Such deviations shall not exceed the following limits:

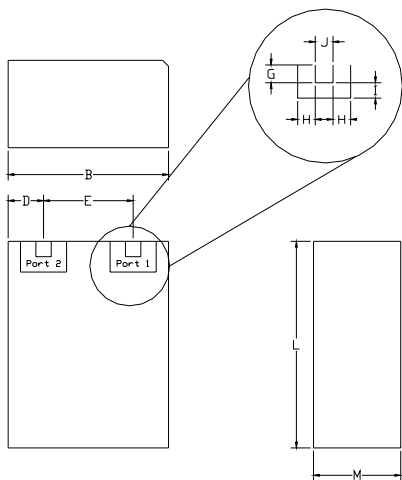
Specification Allowance

Insertion Loss	0.1 dB
Return Loss	1.0 dB
Stopbands	1.0 dB

*This product is covered by one or more of the following U.S. and foreign patents including: US 4,692,726;US 4,742,562; US 4,800,348;US 4,829,274;US 5,146,193;EP 0573597;DE 0573597;FR 0573597;JP 508149/92;KR 142171;US 5,162,760;US 5,218,329;US 5,250,916;US 5,327,109;US 5,488,335;CA 2114029;FR 9306297;GB 2273393;JP 3205337;KR 115113;CN 93106228.4;US 5,512,866;EP 0706719;DE 0706719;FR 0706719;GB 0706719;CN 95190359.4;US 5,602,518;US 5,721,520;US 5,745,018;EP 0910875;DE 0910875;DK 0910875;FR 0910875;GB 0910875;IE 0910875;JP 505182/98;KR 10-323013;US 5,994,978;US 6,462,629;CN 00810420.4;US 6,559,735;US 6,650,202;US 6,834,429.Other US and foreign patents pending.

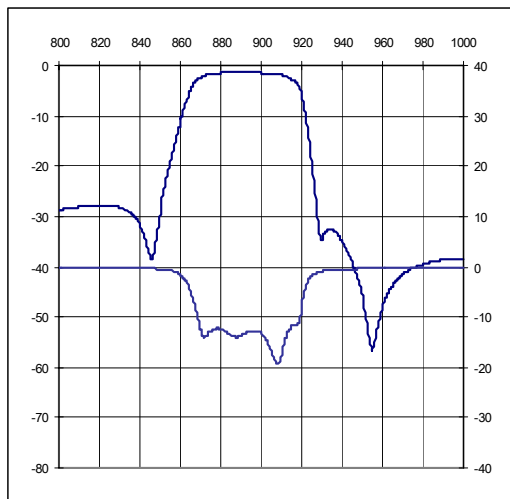
CTS Corporation 2006 reserves all copyrights in the layout, design and configuration of the patterns on this product.

Mechanical Drawing

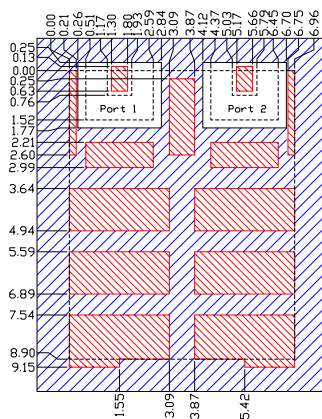


Dim	Nominal (mm)	Tolerance (mm) +/- or max
A		
B	7.05	max
C		
D	1.55	0.25
E	3.86	0.13
F		
G	0.76	0.13
H	0.66	0.13
I	0.76	0.13
J	0.76	0.13
K		
L	8.4	max
M	3.93	max

Electrical response



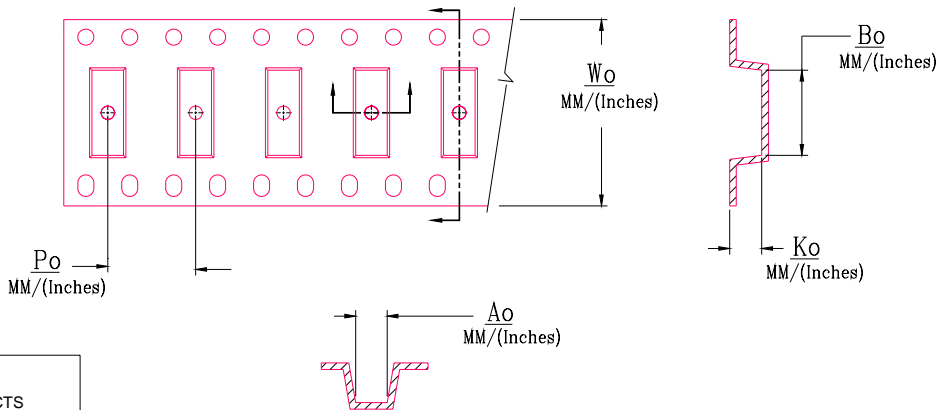
PCB Layout



- Dimensions are in mm. Tolerance = ± 0.13
- Filter Outline
 - ▨ Exposed Conductor
 - ▨ Solder Resist Over Conductor
 - Solder Resist Over Dielectric

Packaging and Marking

REEL DIAMETER	mm	330
REEL WEIGHT	kg	0.346
REEL QUANTITY	ea.	500



MODEL NO.	Wo	Ao	Bo	Ko	Po
CER0104	0.945/24.0	0.366/9.30	0.291/7.40	0.176/4.47	0.630/16.0