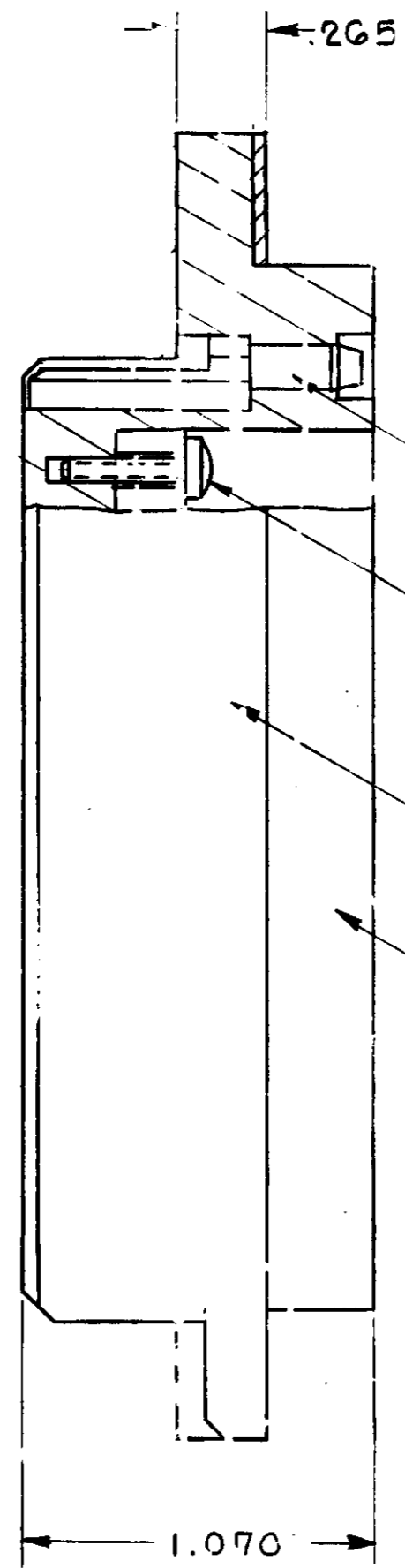


THIS DRAWING IS UNPUBLISHED. RELEASED FOR PUBLICATION
 © COPYRIGHT 19 BY AMP INCORPORATED, HARRISBURG, PA. ALL INTERNATIONAL RIGHTS RESERVED. AMP PRODUCTS MAY BE COVERED BY U.S. AND FOREIGN PATENTS AND/OR PATENTS PENDING.

REVISIONS						
P	F	ZONE	LTR	DESCRIPTION	DATE	APPROVED
V			C	RELEASED WAS 5088-451	2783	DE <i>[Signature]</i>
			A	REVISED PER ECN K-220	9/31/83	TX <i>[Signature]</i>
			B	ADDED -2 / ECN R-2529	12-3-86	MPH <i>[Signature]</i>



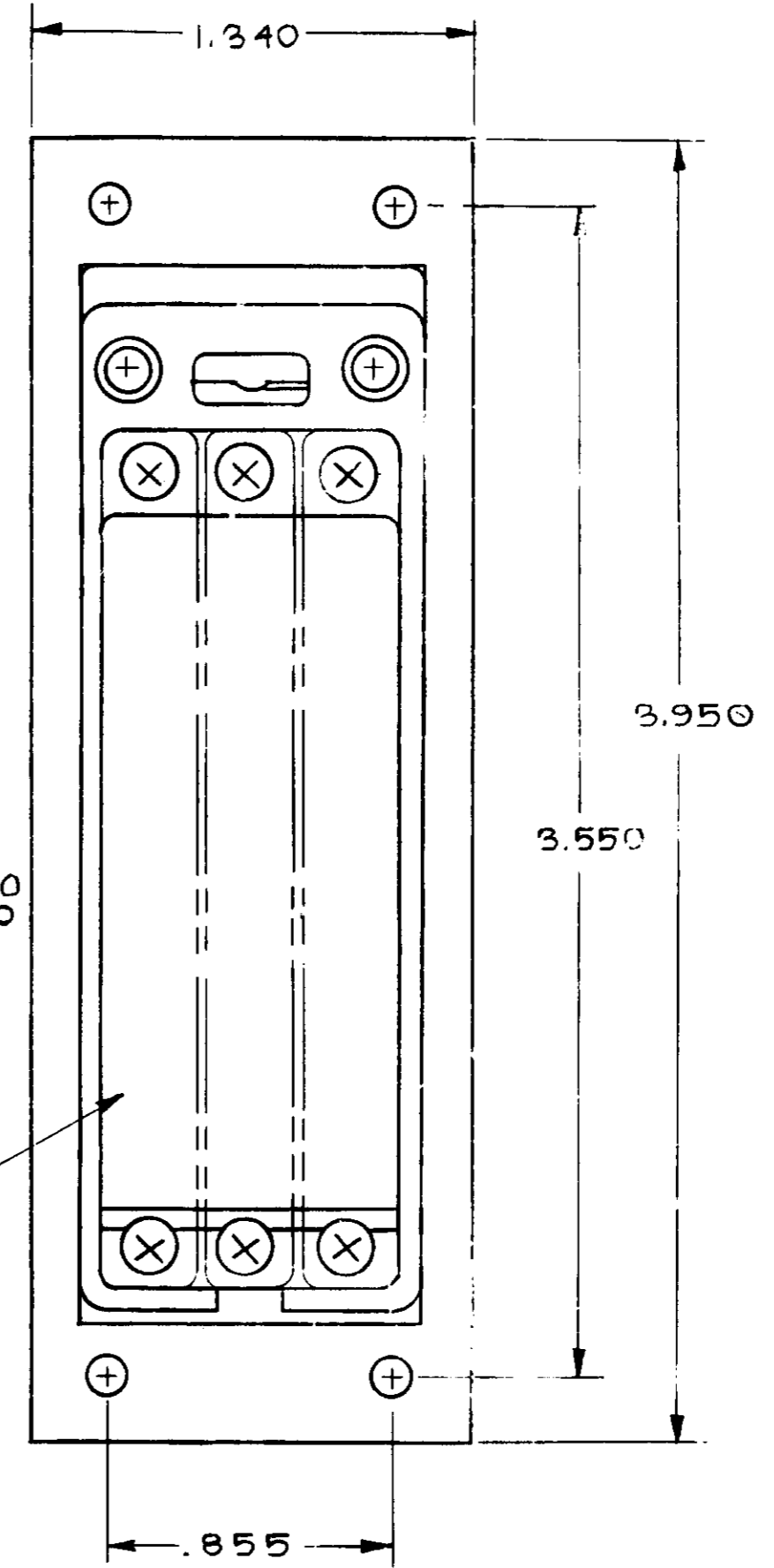
KEYING PLUG
 MAT'L: THERMOPLASTIC
 COLOR: BLACK
 2 REQUIRED

#2 THREAD FORMING SCREW
 6 REQUIRED

RECEPTACLE SHIELD,
 MAT'L: COPPER ALLOY PER MIL-C-50
 FINISH: NICKEL PLATED PER QQ-N-290
 OVER COPPER PER MIL-C-14550A

RECEPTACLE HOUSING,
 MAT'L: THERMOPLASTIC
 COLOR: BLACK

40 POSITION MODULES
 SHOWN FOR REF. ONLY
 3 REQUIRED



1. PARTS PACKAGED UNASSEMBLED.

UNLESS OTHERWISE SPECIFIED DIMENSIONS ARE IN INCHES. TOL: 4'CES ON' DECIMALS ±.010 ANGLES #		CONTRACT NO		AS SHOWN EXCEPT ALT. KEYING		211686-2	
MATERIAL SEE CALL OUT		DR <i>D. Endman</i> 7-7-82		AS SHOWN		211686-1	
FINISH #		CHK <i>[Signature]</i> 2-9-83		DESCRIPTION			
		APPD <i>[Signature]</i> 2-10-83		AMP INCORPORATED Harrisburg, Pa. 17105			
		ESGN APPD <i>[Signature]</i> 2-10-83		NAME			
		OTHER APPD		RECEPTACLE KIT FOR 120 POS "CR" SERIES CONNECTOR			
				SIZE C		DRAWING NO 211686	
				SCALE #		SHEET 1 OF 1	

CUST # 211686