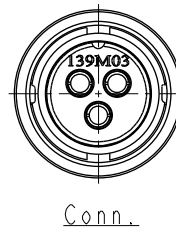
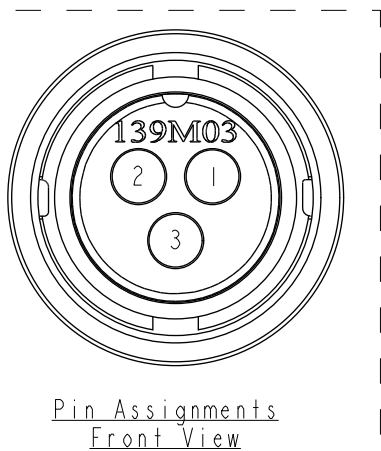
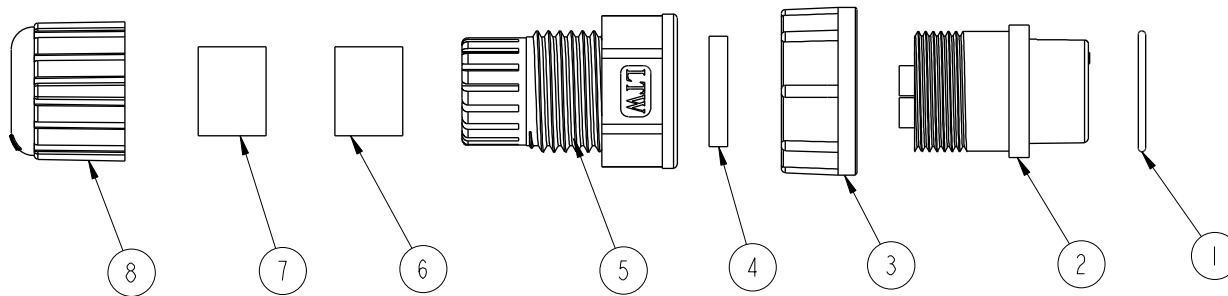


REV.	ECN NO.	DATE	SIGN	DESCRIPTION

ALTW
DCC. DEPT.
CONFIDENTIAL
2012-05-09
ISSUED

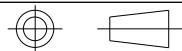
ALTW
CONFIDENTIAL
2012-04-09
R&D DEPT.



Note:

- * \varnothing Important Dimension To Check.
- * Waterproof Rate: IP67
- * Connector: Black, Nylon+GF
- * Female Pin: Copper Alloy, Gold Plated
- * O-Ring: EPDM
- * Lock Nut: Nylon+GF, Black
- * Gasket: EPDM, Bk
- * Clamp Ring: Nylon, Black
- * Sealing Nut: Nylon, Black
- * Seals B1 for Cable OD: \varnothing 7.6mm- \varnothing 9.6mm
- * Seals B2 for Cable OD: \varnothing 4.0mm- \varnothing 7.6mm
- * One Set Unassembled in One PE Bag

UNIT:mm



TOLERANCE
.X ±0.25
.XX ±0.1
.XXX ±0.05
ANGLES ±1°

TITLE Middle Assy Lock 3Pin F Conn F Pin			
SCALE 1:1	SIZE A4	SHEET 1 OF 1	
REV. A	WC-REV. A.2	\varnothing : Inspection item	

Amphenol LTW
安費諾亮泰企業股份有限公司

ITEM NO. CC-03BFFA-LL7001	DRAWN BY SamChang	DATE 2012-04-09
DWG NO. CC-03BFFA-LL7001	CHECKED BY Jeffrey	DATE 2012-05-09
CUSTOMER ALTW	APPROVED BY Lion	DATE 2012-05-09

THIS DOCUMENT IS SUBJECT TO CHANGE WITHOUT NOTICE. IT IS CONFIDENTIAL AND A PROPERTY OF AMPHENOL LTW. DISCLOSURE TO THIRD PARTY HAS TO BE AUTHORIZED BY AMPHENOL LTW.