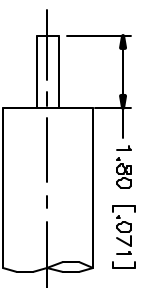
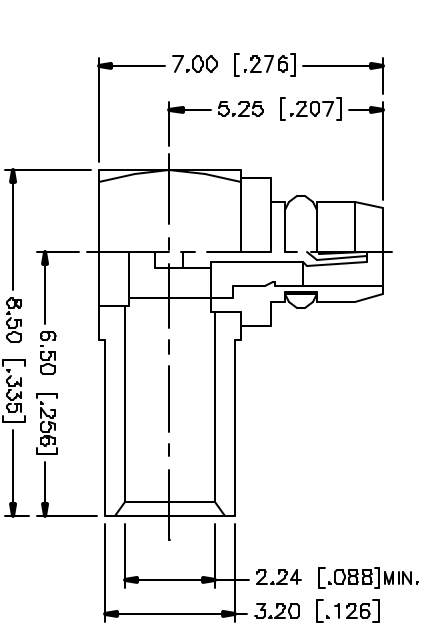
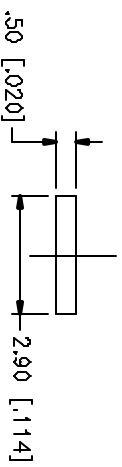
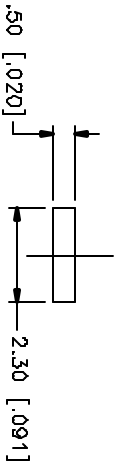


| REV. | DATE | DESCRIPTION |
|------|----------|-----------------------|
| A | 05/01/04 | UPDATE DRAWING FORMAT |



RECOMMENDED CABLE STRIPPING DIM'S.



NOTE:

1. CONTACT PIN TO SOLDER

| REV. | DATE | DESCRIPTION |
|------|------|-------------|
| B | | |
| 7 | | |
| 6 | | |
| 5 | | |
| 4 | | |
| 3 | | |
| 2 | | |
| 1 | | |

| DESCRIPTION | MATERIAL | FINISH | QTY |
|---------------|-------------|---------|-----|
| COVER | BRASS | GOLD | 1 |
| INSULATOR | TEFLON | NATURAL | 1 |
| RETAINER RING | BER. COPPER | GOLD | 1 |
| CONTACT PIN | BRASS | GOLD | 1 |
| INSULATOR | TEFLON | NATURAL | 1 |
| BODY | BRASS | GOLD | 1 |
| DESCRIPTION | MATERIAL | FINISH | QTY |

| UNLESS OTHERWISE SPECIFIED DIMENSIONS ARE IN MILLIMETERS (DIMENSIONS IN INCHES ARE IN PARENTHESES AND FOR DIMENSIONS REFER TO DRAWING SHEETS AND FOR DIMENSIONS REFER TO DRAWING SHEETS) | UNLESS OTHERWISE SPECIFIED DIMENSIONS FOR MILLIMETER ARE: | UNLESS OTHERWISE SPECIFIED DIMENSIONS FOR INCHES ARE: |
|--|---|---|
| 0.5 - .30mm ± 0.20mm | 8 - .30mm ± 0.40mm | 30 - .120mm ± 0.50mm |
| .020 - .315 = ± 0.007" | .315 - 1.180 = ± 0.015" | 1.180 - 4.724 = ± 0.020" |

| APPROVALS | DATE |
|--------------|----------|
| DRAWN G.R.S. | 05/01/04 |
| CHECKED | |
| INSULATED | |
| BRIST 1 OF 1 | |

| DO NOT SCALE DRAWING | END FILE |
|----------------------|----------|
| C:/262/262113.DWG | |

| DWG. NO. | REV. | SIZE | SCALE |
|------------|------|------|-------|
| 262113.DWG | A | A | NA |

| PART DESCRIPTION | PART NO. |
|---|----------|
| MMCX R/A SEMI-RIGID PLUG (FOR .085", .086") | 262113 |