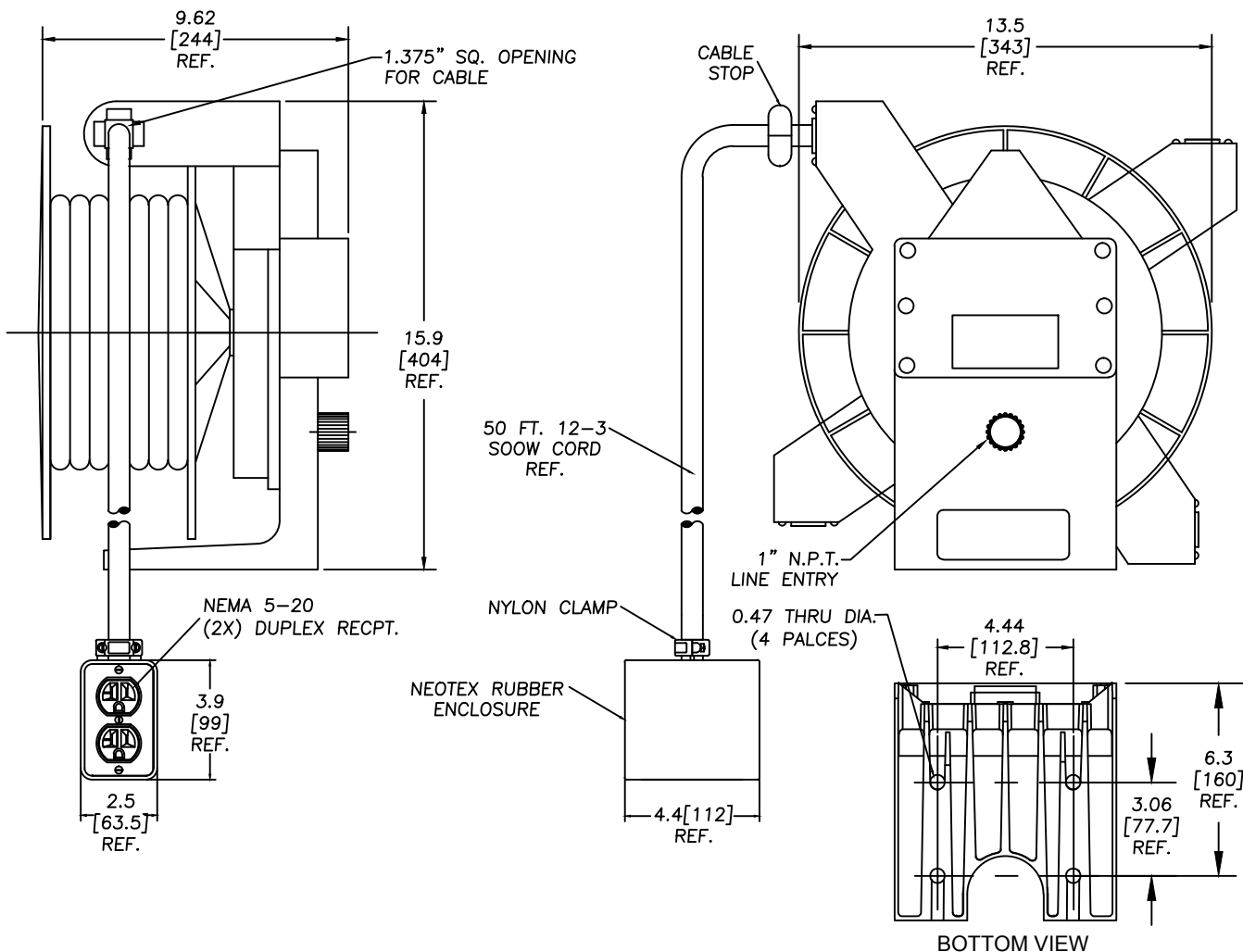


ORDER NO.	130083-0787
WOODHEAD ENG. NO.	92433-3080
WIRE GAUGE	12
CONDUCTORS	3
AMPERAGE	18A
CORD LENGTH	50 FT [15.24 M]
CORD TYPE	SOOW
CONSTRUCTION	HEAVY WALL CAST ALUMINUM
PAINT	YELLOW POWDER COAT
REEL ENCLOSURE RATING	NEMA 4 INDOOR / OUTDOOR
RETRACTION WEIGHT	4.0 LB [1.8 KG]



NOTES:

- CABLE GUIDE IS ADJUSTABLE EVERY 5 DEGREES OVER 270 DEGREE ARC.
- RATCHET LOCK IS EASY TO DISENGAGE FOR CONSTANT TENSION.
- REEL CANNOT BE "LOCKED OUT" AT FULL TENSION.
- REEL IS TRUCK MOUNTABLE.
- BALL STOP IS INCLUDED

RELEASE DRAWING EC NO: WNA2012-0035 DRWN: MCHOJECK 2011/07/18 CHKD: DT APPR: DTITUS 2011/09/02	QUALITY SYMBOLS	GENERAL TOLERANCES (UNLESS SPECIFIED)		DIMENSION STYLE	SCALE	DESIGN UNITS	THIRD ANGLE PROJECTION	
	$\nabla = 0$ $\sphericalangle = 0$	mm	INCH	IN/MM	NTS	INCH		
		4 PLACES ±---	±---	DRAWN BY DATE	TITLE	92433 REEL W/3080 BOX & 50' 12-3 CORD		
		3 PLACES ±---	±.005	MCHOJECK 2011/07/18				
	2 PLACES ±0.13	±.010	CHECKED BY DATE					
	1 PLACE ±0.25	±.020	DT 2011/07/18					
	ANGULAR ±1/2°		APPROVED BY DATE					
	DRAFT WHERE APPLICABLE MUST REMAIN WITHIN DIMENSIONS		DTITUS 2011/09/02					
			MATERIAL NO.	1300830787		MOLEX INCORPORATED		
			SIZE	A		DOCUMENT NO.	SD-130083-039	
			THIS DRAWING CONTAINS INFORMATION THAT IS PROPRIETARY TO MOLEX INCORPORATED AND SHOULD NOT BE USED WITHOUT WRITTEN PERMISSION					SHEET NO. 1 OF 1