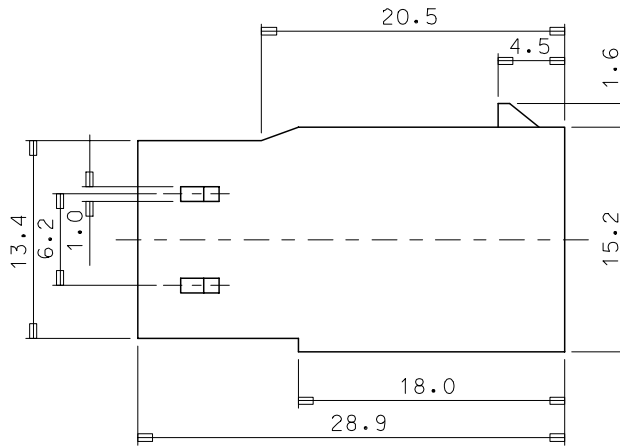
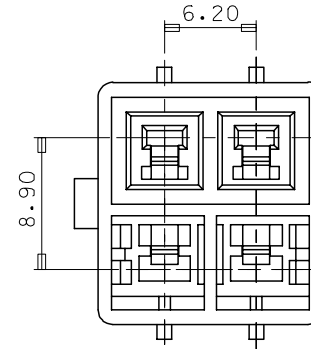
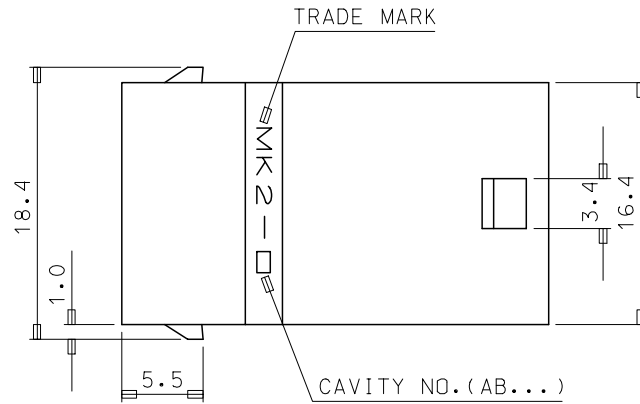
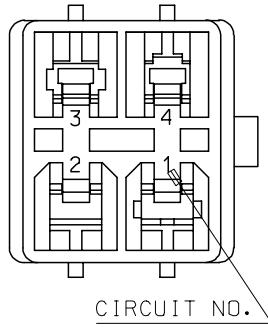


10 9 8 7 6 5 4 3 2 1



NOTES

- MATED HOUSING: 35151-0410
- APPLICABLE TERMINAL: 35745-**** (1CKT)
35746-**** (3CKT)
35747-**** (2CKT)
35748-**** (4CKT)
- APPLICABLE T.P.A: 35150-0290

NO	PRODUCT		MATERIAL	
	PART NO	MATERIAL NO	COLOR	DESCRIPTION
1	35150-0400	351500400	NATURAL	PBT
2	35150-0404	351500404	BLUE	(UL94V-0)
3	35150-0409	351500409	NATURAL	PBT/PC(UL94V-0)

REVISED
 EC NO: KOR2008-0048
 DRWN: JHPARK01 2007/09/10
 CHKD: WYANG 2007/09/10
 APPR: YUNSIKKIM 2007/09/10

QUALITY SYMBOLS
 ▽=0
 ▽=0

GENERAL TOLERANCES (UNLESS SPECIFIED)

	mm	INCH
4 PLACES	± ---	± ---
3 PLACES	± ---	± ---
2 PLACES	± ---	± ---
1 PLACE	± 0.3	± ---

ANGULAR ± 1 °

DRAFT WHERE APPLICABLE MUST REMAIN WITHIN DIMENSIONS

DIMENSION STYLE
 MM ONLY

DRAWN BY
 WY. YANG

CHECKED BY
 BK. CHOI

APPROVED BY

MATERIAL NO.

SIZE
 A3

SCALE
 3:1

DESIGN UNITS
 METRIC

THIRD ANGLE PROJECTION

6.2 PITCH W/W MALE HOUSING-4P

MOLEX INCORPORATED

DOCUMENT NO.
 SD-35150-0400

SHEET NO.
 1 OF 01

THIS DRAWING CONTAINS INFORMATION THAT IS PROPRIETARY TO MOLEX INCORPORATED AND SHOULD NOT BE USED WITHOUT WRITTEN PERMISSION

9 8 7 6 5 4 3 2 1