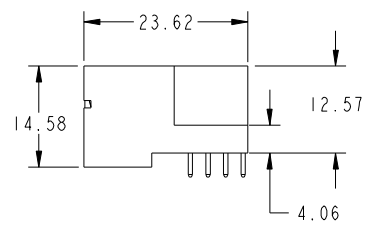
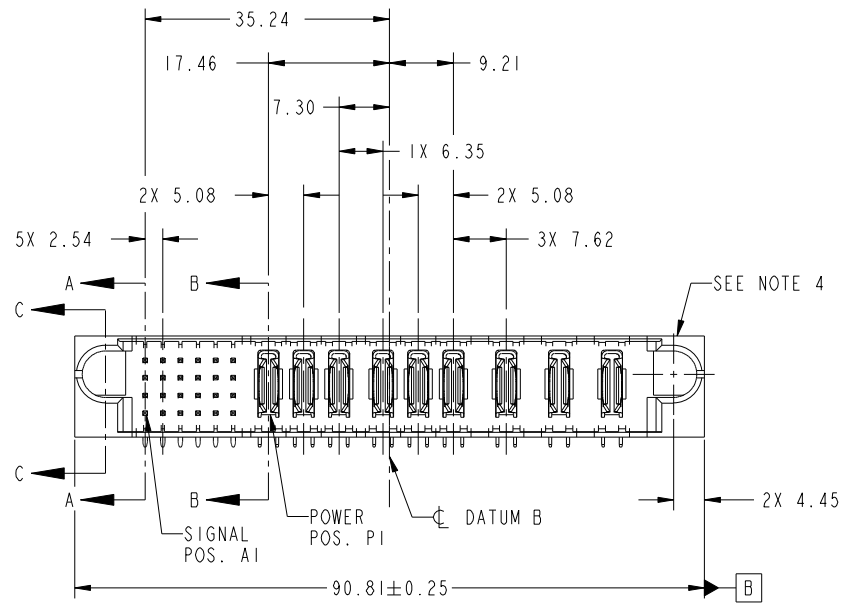


Tous droits strictement reserves. Reproduction ou communication a des tiers interdite sous quelque forme que ce soit sans autorisation écrite du propriétaire. Propriete de c FCI. Droits de reproduction FCI.



All rights strictly reserved. Reproduction or issue to third parties in any form whatever is not permitted without written authority from the proprietor. Property of FCI. Copyright FCI.

PRODUCT NO.	ROWS	SIGNAL					POWER									E2			
		E1	1	2	3	4	5	6	P1	P2	P3	P4	P5	P6	P7		P8	P9	
51939-531... NOTE 3	D C B A	U	H	U	U	U	H	G	G	PA	PA	PA	PA	PA	PA	PA	PA	PA	PA
		T	T	T	T	T	G	G											
		S	S	S	S	S	F	F											
		R	R	R	R	R	F	F											



CODE	DIM "M" MATING LENGTH	CONTACT TYPE
U	[6.86]	SIGNAL
T	[6.86]	SIGNAL
S	[6.86]	SIGNAL
R	[6.86]	SIGNAL
PA	[N/A]	POWER
H	[5.59]	SIGNAL
G	[5.59]	SIGNAL
F	[5.59]	SIGNAL
E	[5.59]	SIGNAL

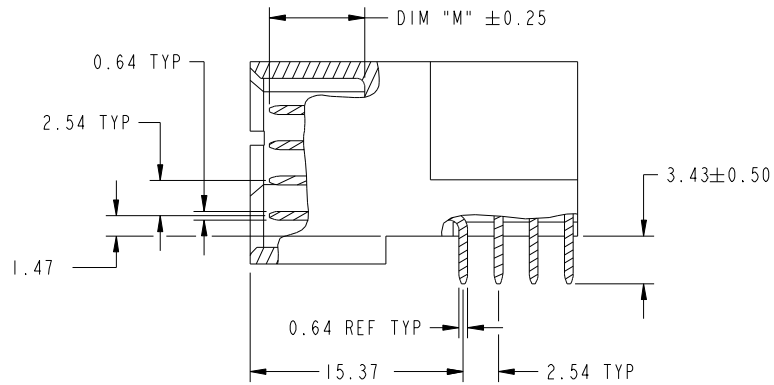
mat'l code				SEE NOTE		tolerances unless otherwise specified		CUSTOMER		FCI	
ltr	ecn no.	dr	date	linear	0.X ±0.5	projection		COPY		www.fciconnect.com	
A	DG10-0173	HW	05/16/09	angles	0.XX ±0.25	MIM		title		24S + 9P	
				dr	0.XXX ±0.1	scale		product family		PwrBlade	
				enr	0° ±2°	1:1		size		code	
				chr	HENRY WANG 04/24/10			dwg no		213	
				appd	HENRY WANG 04/24/10			A		51939-531	
					PM ZHENG 04/24/10					sheet	
					JOSEPH HSIA 04/24/10					1 of 4	
sheet index	revision sheet	A	A	A	A					cage code	
		1	2	3	4					22526	

Tous droits strictement reserves. Reproduction ou communication a des tiers interdite sous quelque forme que ce soit sans autorisation écrite du propriétaire. Propriete de c FCI. Droits de reproduction FCI.

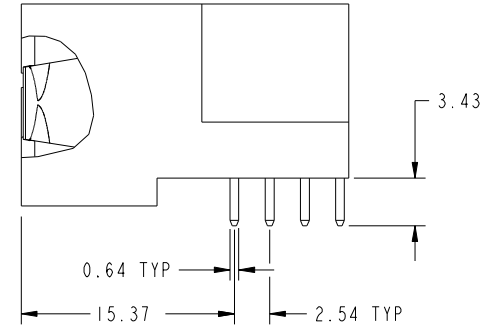
All rights strictly reserved. Reproduction or issue to third parties in any form whatever is not permitted without written authority from the proprietor. Property of FCI. Copyright FCI.



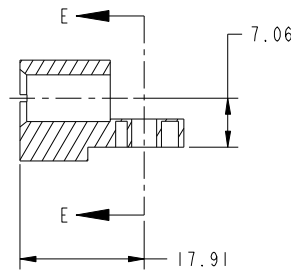
PRODUCT NUMBER
51939-531__
NOTE: 3



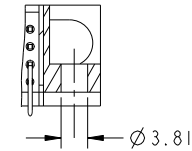
BROKEN-OUT SECTION A-A
SCALE 2:1



BROKEN-OUT SECTION B-B
SCALE 2:1



SECTION C-C



PARTIAL SECTION E-E

mat'l code				SEE NOTE		tolerances unless otherwise specified		CUSTOMER		 www.fciconnect.com	
ltr	ecr no.	dr	date	linear	0.X ±0.5		COPY		title 24S + 9P RIGHT ANGLE SOLDER HEADER		
A					0.XX ±0.25		projection				
					angles	0.XXX ±0.1		 MIM		product family PwrBlade code 213	
				dr		HENRY WANG	04/24/10	scale		size dwg no 213	
				enr	HENRY WANG	04/24/10	1:1		sheet 2 of 4		
				chr	PM ZHENG	04/24/10			A 51939-531		
				appd	JOSEPH HSIA	04/24/10					
sheet index	revision sheet										

cage code 22526

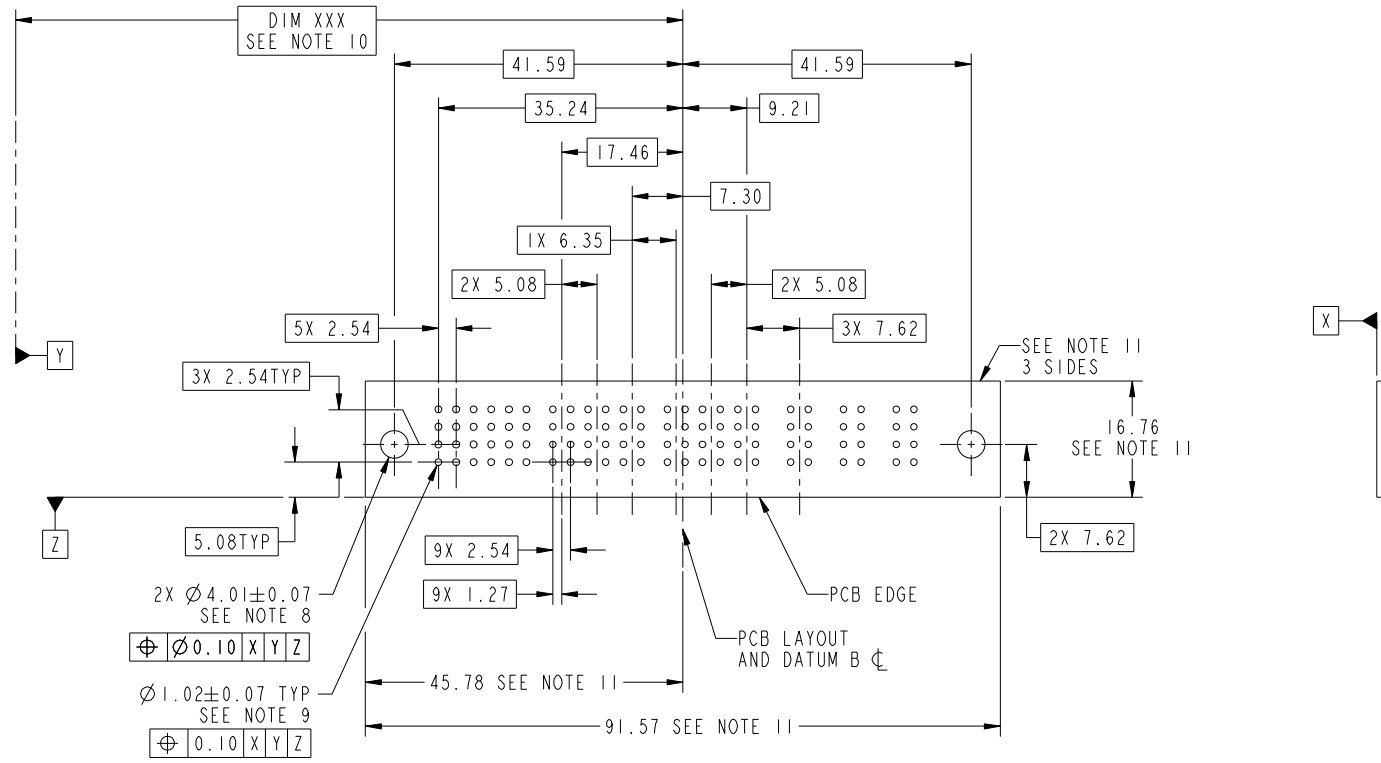
Pro/E

Tous droits strictement reserves. Reproduction ou communication a des tiers interdite sous quelque forme que ce soit sans autorisation écrite du propriétaire. Propriete de c FCI. Droits de reproduction FCI.



All rights strictly reserved. Reproduction or issue to third parties in any form whatever is not permitted without written authority from the proprietor. Property of FCI. Copyright FCI.

PRODUCT NUMBER
51939-531__
NOTE: 3



RECOMMENDED PCB LAYOUT

2X $\varnothing 4.01 \pm 0.07$
SEE NOTE 8
 $\varnothing 0.10$ X Y Z
 $\varnothing 1.02 \pm 0.07$ TYP
SEE NOTE 9
 $\varnothing 0.10$ X Y Z

mat'l code		SEE NOTE		tolerances unless otherwise specified		CUSTOMER		FCI	
ltr	ecn no.	dr	date	linear	0.X ± 0.5	COPY		www.fciconnect.com	
A					0.XX ± 0.25	projection		title	
				angles	0.XXX ± 0.1			24S + 9P RIGHT ANGLE SOLDER HEADER	
				dr	0° ± 2°			product family PwrBlade code	
				enr	HENRY WANG 04/24/10	scale		size	
				chr	HENRY WANG 04/24/10	1:1		dwg no	
				appd	PM ZHENG 04/24/10	A		51939-531	
					JOSEPH HSIA 04/24/10			sheet	
sheet index	revision sheet							3 of 4	

cage code 22526

Pro/E

Tous droits strictement reserves. Reproduction ou communication a des tiers interdite sous quelque forme que ce soit sans autorisation écrite du propriétaire. Propriete de c FCI. Droits de reproduction FCI.



All rights strictly reserved. Reproduction or issue to third parties in any form whatever is not permitted without written authority from the proprietor. Property of FCI. Copyright FCI.

PRODUCT NUMBER
51939-531--
NOTE: 3

NOTES:

1. DIMENSIONS AND TOLERANCES ARE IN ACCORDANCE WITH ASME Y14.5M, 1994 UNLESS OTHERWISE SPECIFIED.

CONNECTOR NOTES:

- 2. HOUSING MATERIAL: UL 94 V-0 GLASS FILLED HIGH-TEMP THERMOPLASTIC
POWER CONTACT MATERIAL: COPPER ALLOY
SIGNAL PIN MATERIAL: COPPER ALLOY
- 3. SEE ITEM 1 & 2 IN PRINT 10064183 FOR PLATING SPEC OF 51939-531 AND 51939-531LF RESPECTIVELY.
- 4. MANUFACTURER'S NAME, DATE CODE AND OPTIONAL P/N TO APPEAR ON THIS SURFACE. THE P/N CAN BE OMITTED IF THERE IS NOT ENOUGH SPACE ON THIS SURFACE.
- 5. PRODUCT SPECIFICATION GS-12-149.
APPLICATION SPECIFICATION BUS-20-067.
- 6. PACKAGED IN TRAYS.

PCB NOTES:

- 7. ALL HOLE DIAMETERS ARE FINISHED HOLE SIZE.
- 8. MOUNTING HOLES, WHERE APPLICABLE, ARE UNPLATED.
- 9. $\varnothing 1.151 \pm 0.025$ DRILLED HOLES PLATED WITH
0.008 MIN SnPb OR Sn OVER 0.03
TO 0.08 Cu PLATING TO ACHIEVE
 $\varnothing 1.02 \pm 0.07$ HOLE.
- 10. "DIM XXX" TO BE DETERMINED BY THE CUSTOMER.
- 11. CONNECTOR KEEP-OUT ZONE.

mat'l code		SEE NOTE		tolerances unless otherwise specified		CUSTOMER		FCI		www.fciconnect.com	
ltr	ecn no.	dr	date	linear	0.X ± 0.5	COPY				title	
A					0.XX ± 0.25	projection				24S + 9P	
				angles	0.XXX ± 0.1					RIGHT ANGLE SOLDER HEADER	
				dr	HENRY WANG 04/24/10	MIM		product family		PwrBlade	code
				enr	HENRY WANG 04/24/10			size		dwg no	213
				chr	PM ZHENG 04/24/10	scale		A		51939-531	sheet
				appd	JOSEPH HSIA 04/24/10	1:1				4 of 4	
sheet index		revision sheet									

cage code 22526

Pro/E