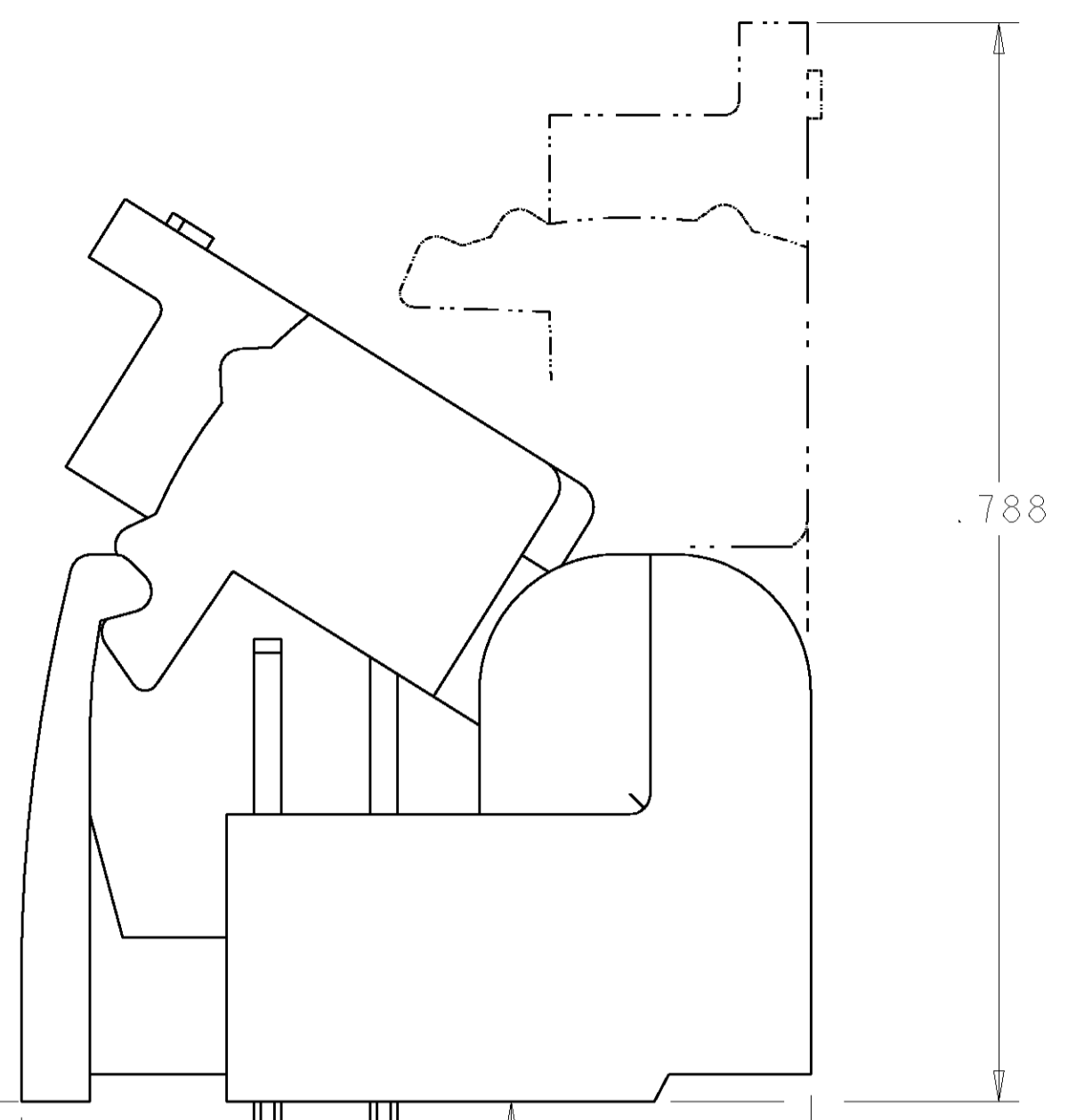
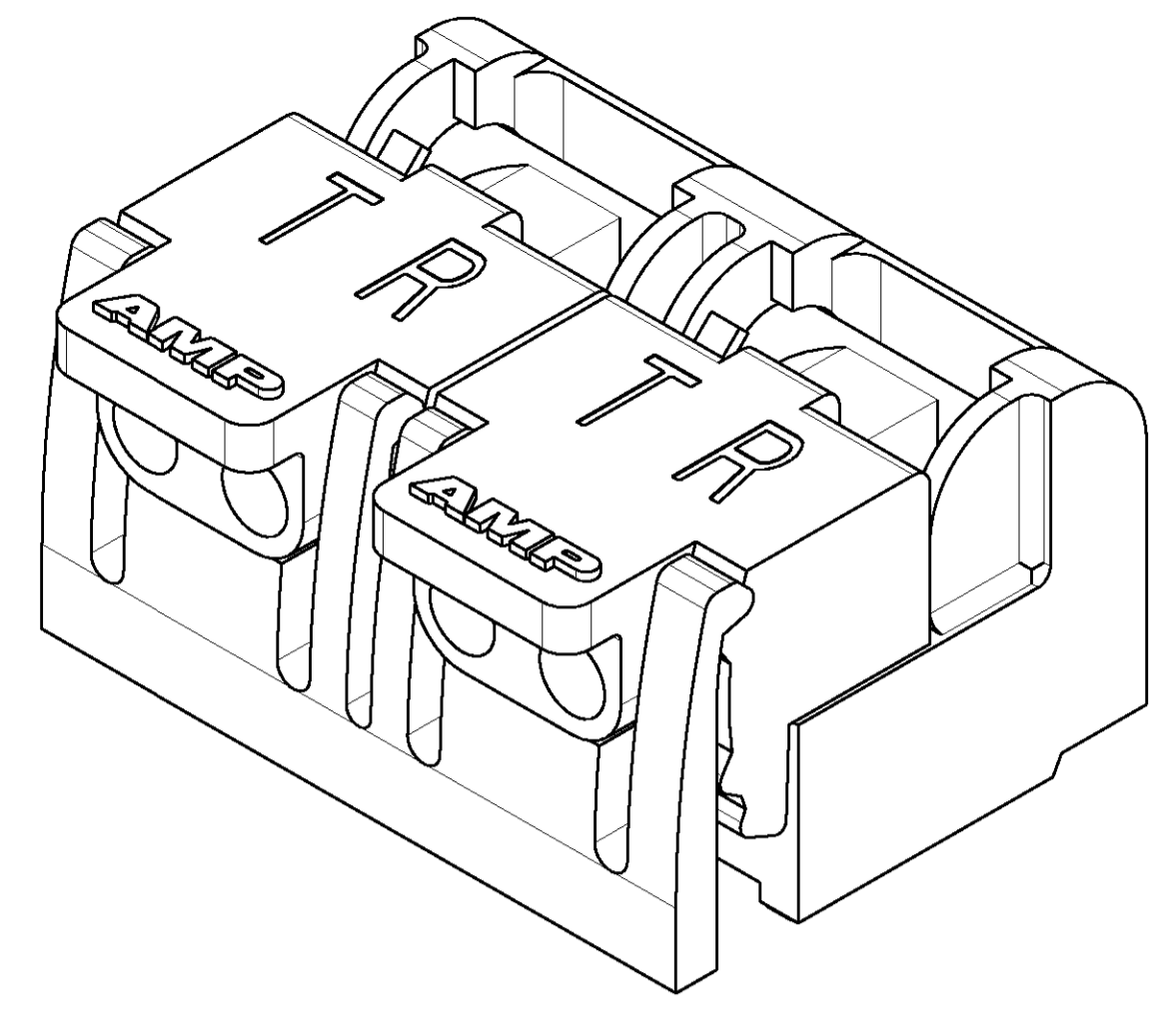
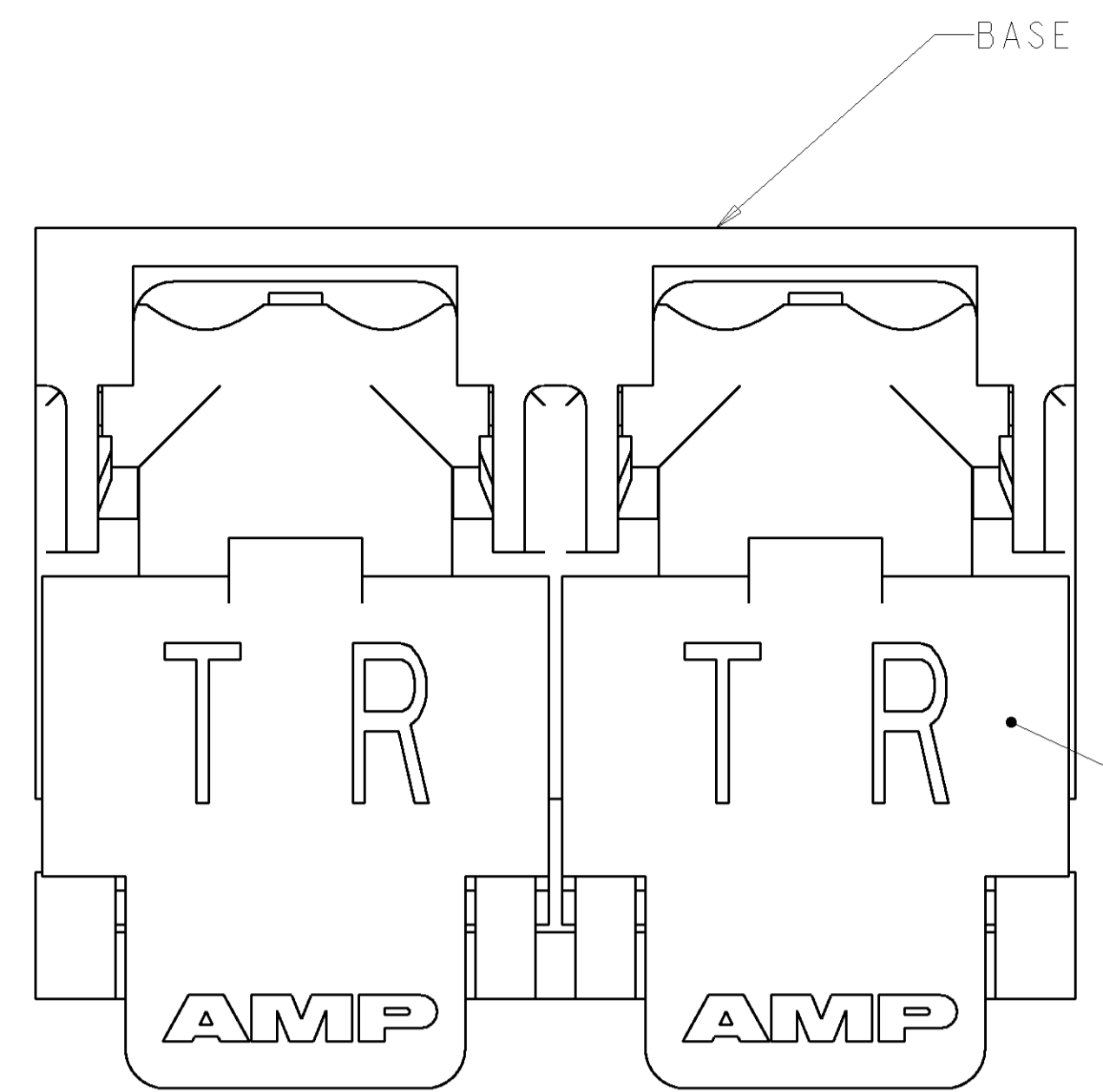


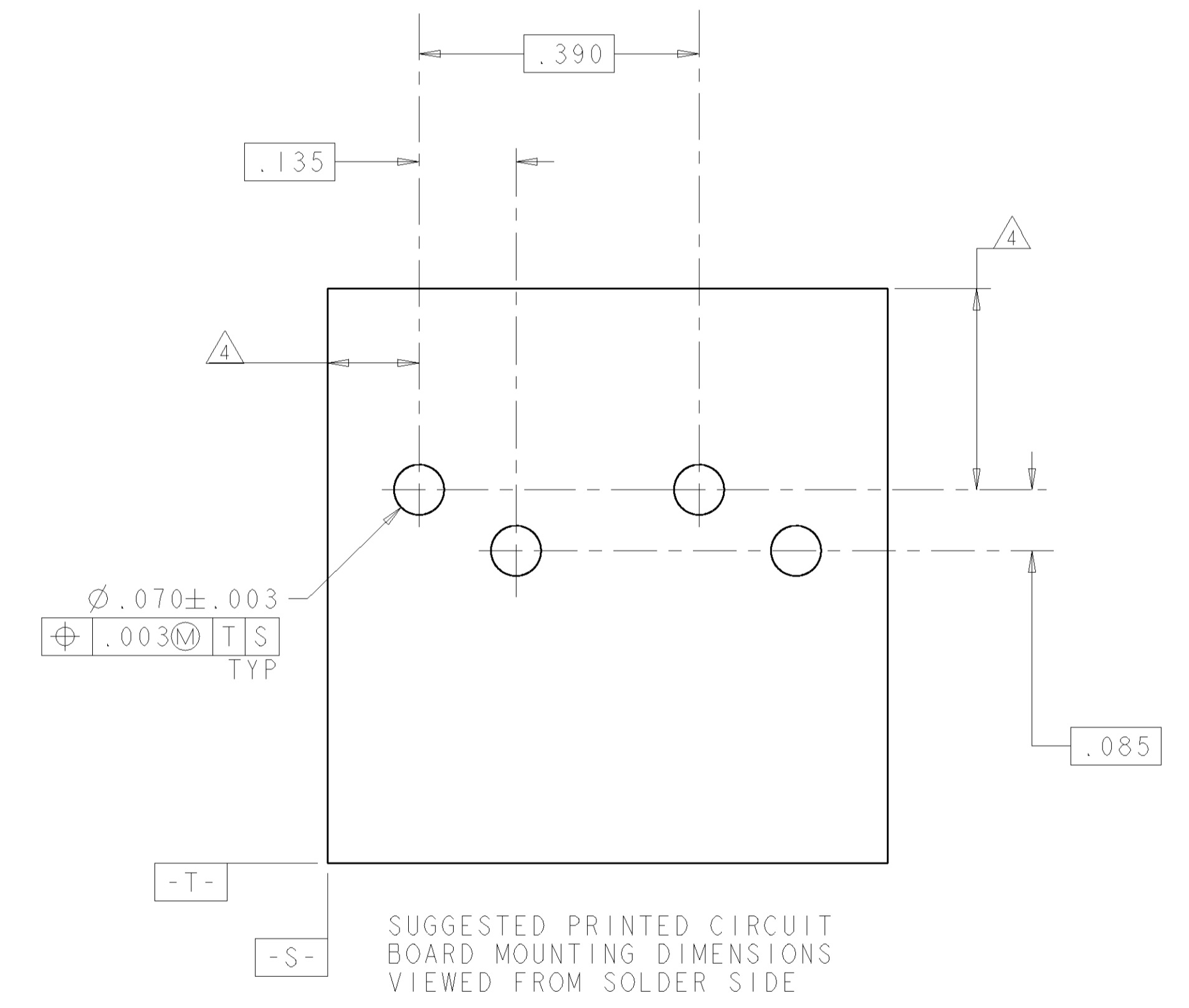
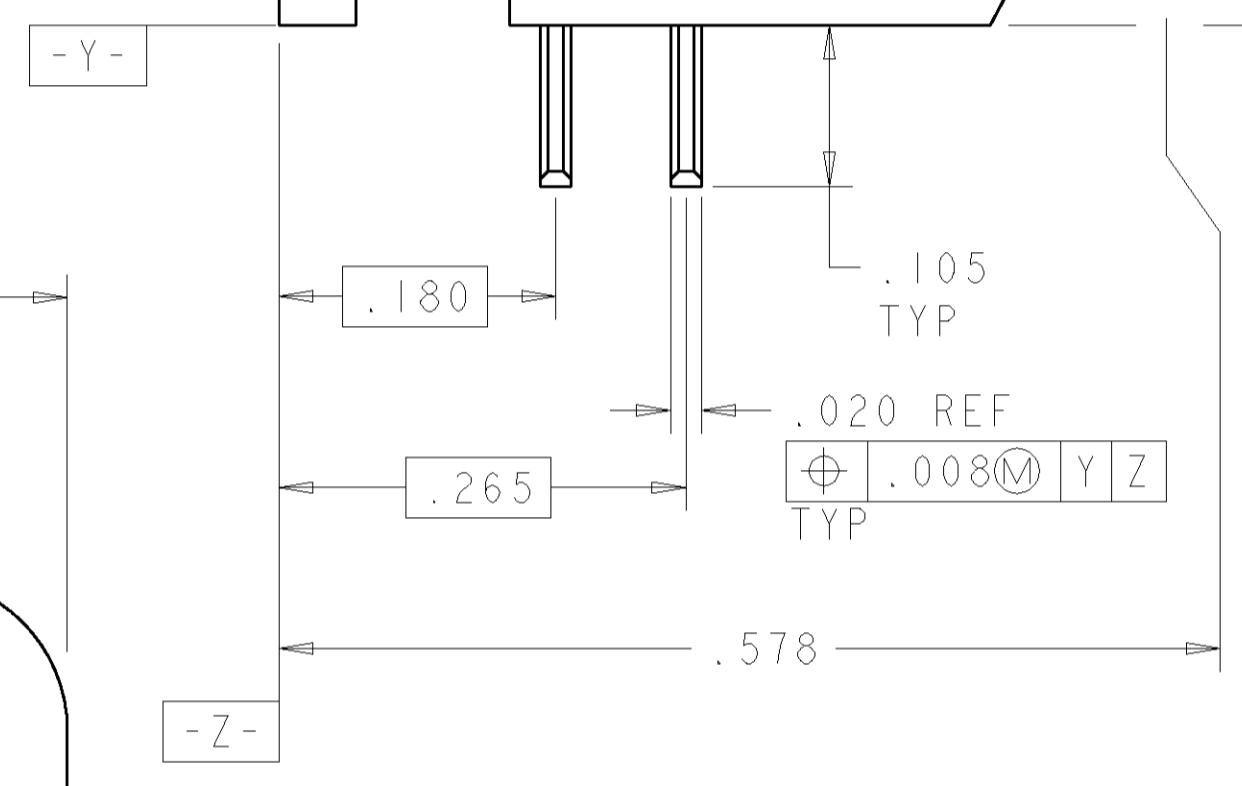
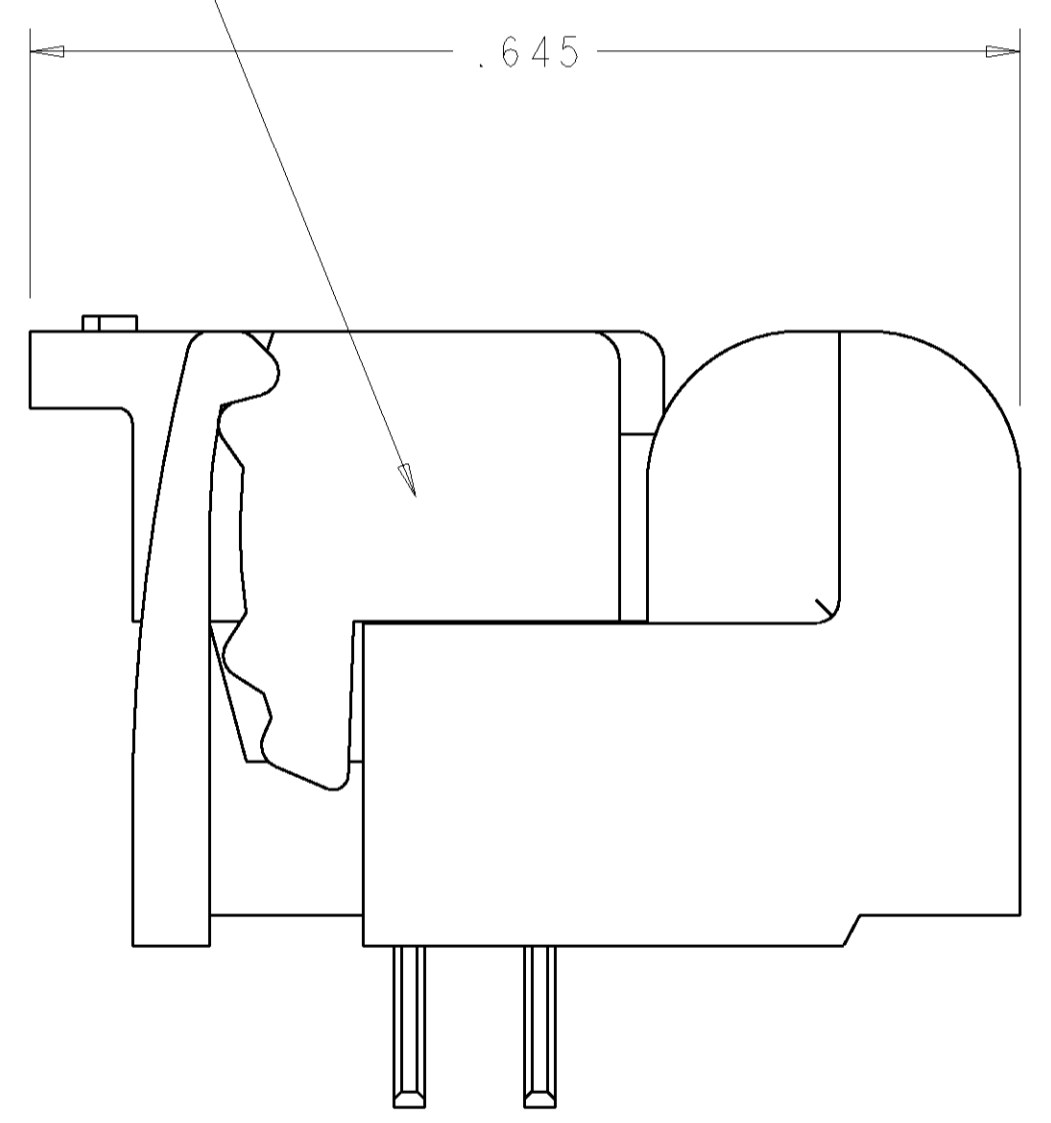
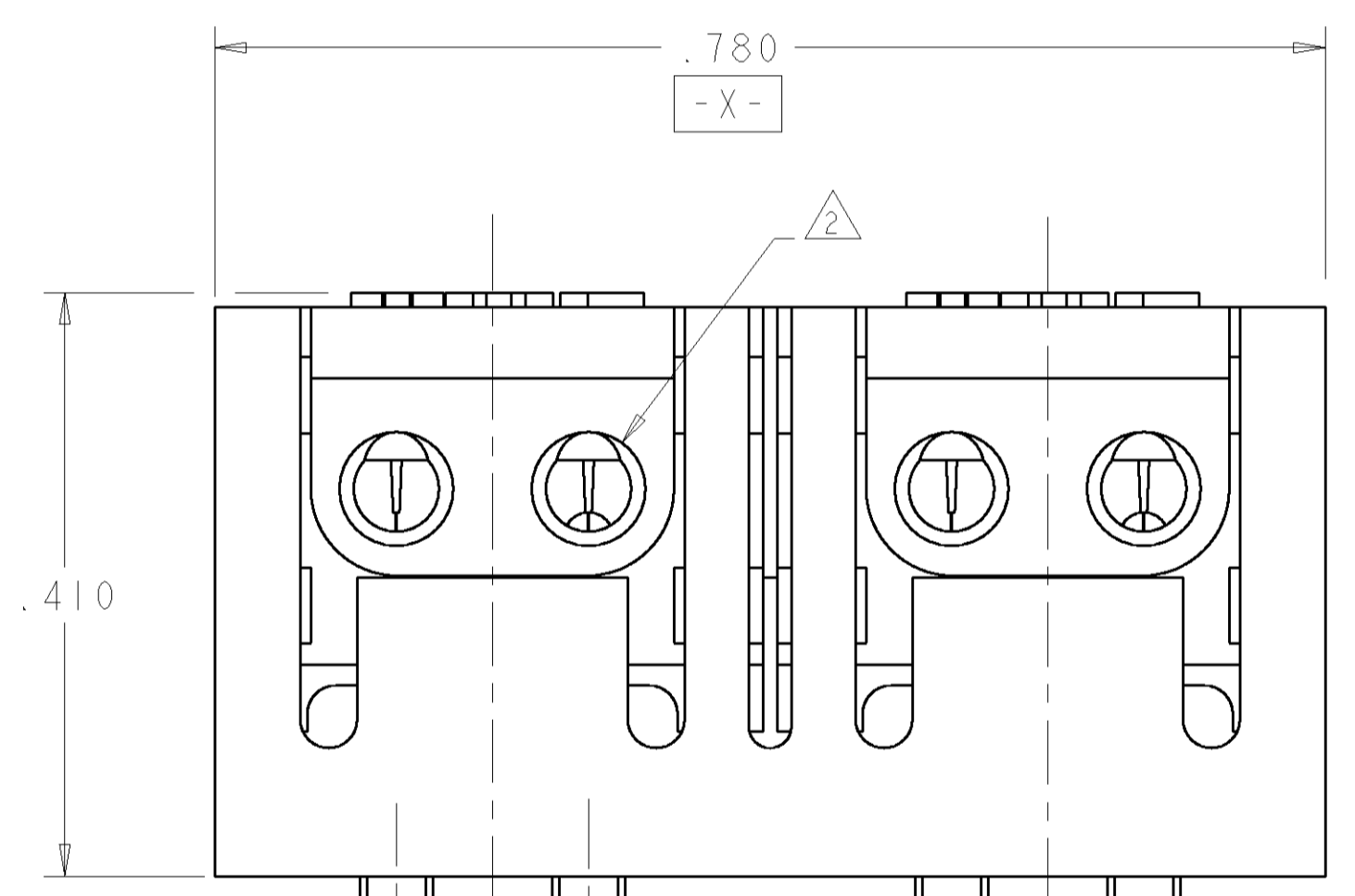
LOC	DIST	REVISIONS					
GP	0	F	LTR	DESCRIPTION	DATE	DWN	APPD
		A		REV: EC OUIIC-0007-01	22JAN01	JA	TW
		B		REVISED PER EC 0S15-0450-02	21JAN2003	DLD	RPM
		C		REVISED PER 0S15-0324-03	09DEC03	JB	CF



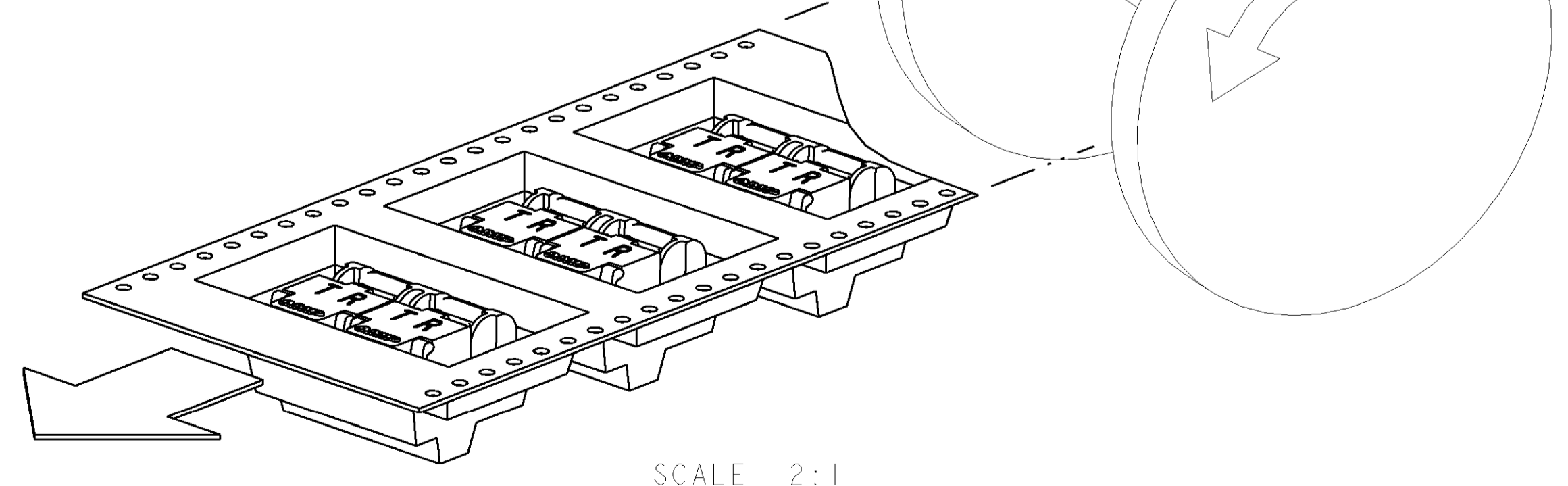
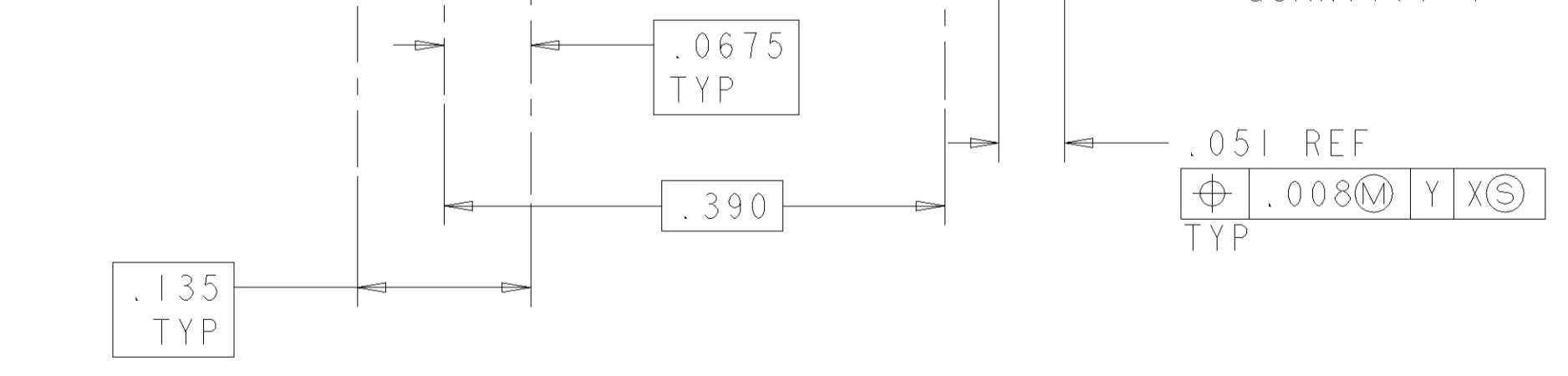
- 1 MATERIAL: BASE - HIGH TEMPERATURE MOLDING COMPOUND, BLACK. WIRE STUFFER: - HIGH TEMPERATURE MOLDING COMPOUND. TERMINAL - COPPER ALLOY, PLATED WITH 3.81µm MINIMUM THICK. TIN OVER 1.27µm MINIMUM THICK NICKEL UNDERPLATE.
- 2 EACH WIRE ENTRY HOLE ACCEPTS ONE UNSTRIPPED SOLID COPPER 22-26 AWG WIRE WITH WIRE INSULATION DIAMETER RANGE FROM .040 THROUGH .030. OTHER WIRE SIZES AND TYPES SHALL BE SUBMITTED TO AMP ENGINEERS FOR APPLICATION APPROVAL.
- 3. SOLDER TABS PROVIDED FOR PERMANENT BOARD MOUNTING.
- 4 LOCATION OF HOLE PATTERN DETERMINED BASED ON CUSTOMER REQUIREMENTS.

WIRE STUFFER QUANTITY 2

WIRE ENTRY HOLE SIZE REDUCED TO ACCOMMODATE SMALLER INSULATION DIAMETERS.



TERMINAL QUANTITY 4



TAPE & REEL	GREEN	GREEN	TAN	1-1339395-1
TRAY	RED	GREEN	TAN	1339395-1
PACKAGING	R	T	WIRE STUFFER	PART NUMBER

<small>THIS DRAWING IS UNPUBLISHED. RELEASED FOR PUBLICATION. ALL RIGHTS RESERVED. ANY REPRODUCTION OR TRANSMISSION OF THIS DRAWING WITHOUT THE WRITTEN PERMISSION OF AMP INCORPORATED IS PROHIBITED.</small>		DWN J. AHERN 03NOV00 CDR	AMP AMP Incorporated Harrisburg, PA 17105-3608
DIMENSIONS: INCHES TOLERANCES UNLESS OTHERWISE SPECIFIED: 0 PLC ±. 1 PLC ±.01 2 PLC ±.01 3 PLC ±.005 4 PLC ±. ANGLES ±. FINISH -	PRODUCT SPEC APPLICATION SPEC WEIGHT CUSTOMER DRAWING	NAME T. WOJTACKI PRODUCT SPEC APPLICATION SPEC CAGE CODE DRAWING NO. 1339395	ASSEMBLY, DOUBLE PAIR, SINGLE ENTRY, PIVOT II CONNECTOR SCALE 6:1 SHEET 1 OF 1 REV C