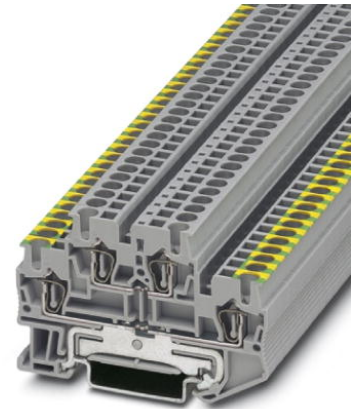


STTB 2,5-PE/L


Order No.: 3036314



<http://eshop.phoenixcontact.de/phoenix/treeViewClick.do?UID=3036314>

Feed-through modular terminal block, Cross section: 0.08 mm² - 4 mm², AWG: 28 - 12, Connection type: Spring-cage connection, Width: 5.2 mm, Color: gray, Mounting type: NS 35/7.5, NS 35/15

Commercial data

| | |
|--------------------------|---|
| GTIN (EAN) |  |
| sales group | A633 |
| Pack | 50 pcs. |
| Customs tariff | 85369010 |
| Catalog page information | Page 100 (CL-2009) |

Product notes

WEEE/RoHS-compliant since:
01/01/2005



<http://www.download.phoenixcontact.com>
Please note that the data given here has been taken from the online catalog. For comprehensive information and data, please refer to the user documentation. The General Terms and Conditions of Use apply to Internet downloads.

Technical data

General

| | |
|-----------------------|------|
| Number of levels | 2 |
| Number of connections | 4 |
| Color | gray |
| Insulating material | PA |

| | |
|------------------------------------|----|
| Inflammability class acc. to UL 94 | V0 |
|------------------------------------|----|

Dimensions

| | |
|------------------|---------|
| Width | 5.2 mm |
| Length | 67.5 mm |
| Height NS 35/7.5 | 47.5 mm |
| Height NS 35/15 | 55 mm |

Technical data

| | |
|----------------------------------|-------------------------------|
| Rated surge voltage | 6 kV |
| Pollution degree | 3 |
| Surge voltage category | III |
| Insulating material group | I |
| Connection in acc. with standard | IEC 60947-7-1 / IEC 60947-7-2 |
| Nominal current I_N | 22 A |
| Nominal voltage U_N | 500 V |

Connection data

| | |
|---|------------------------|
| Conductor cross section solid min. | 0.08 mm ² |
| Conductor cross section solid max. | 4 mm ² |
| Conductor cross section stranded min. | 0.08 mm ² |
| Conductor cross section stranded max. | 2.5 mm ² |
| Conductor cross section AWG/kcmil min. | 28 |
| Conductor cross section AWG/kcmil max | 12 |
| Conductor cross section stranded, with ferrule without plastic sleeve min. | 0.14 mm ² |
| Conductor cross section stranded, with ferrule without plastic sleeve max. | 2.5 mm ² |
| Conductor cross section stranded, with ferrule with plastic sleeve min. | 0.14 mm ² |
| Conductor cross section stranded, with ferrule with plastic sleeve max. | 2.5 mm ² |
| 2 conductors with same cross section, stranded, TWIN ferrules with plastic sleeve, max. | 0.5 mm ² |
| Type of connection | Spring-cage connection |
| Stripping length | 10 mm |
| Internal cylindrical gage | A3 |

Certificates / Approvals



Certification

CB, CSA, CUL, GOST, UL, VDE-PZI

Accessories

| Item | Designation | Description |
|-----------------|----------------------|--|
| Assembly | | |
| 3030747 | ATP-STTB 4 | Partition plate, Length: 88.7 mm, Width: 2 mm, Height: 53 mm, Color: gray |
| 3030459 | D-STTB 2,5 | End cover, Length: 67.5 mm, Width: 2.2 mm, Height: 47.5 mm, Color: gray |
| Bridges | | |
| 3030161 | FBS 2-5 | Plug-in bridge, Number of positions: 2, Color: red |
| 3030174 | FBS 3-5 | Plug-in bridge, Number of positions: 3, Color: red |
| 3030187 | FBS 4-5 | Plug-in bridge, Number of positions: 4, Color: red |
| 3030190 | FBS 5-5 | Plug-in bridge, Number of positions: 5, Color: red |
| 3030213 | FBS 10-5 | Plug-in bridge, Number of positions: 10, Color: red |
| 3030226 | FBS 20-5 | Plug-in bridge, Number of positions: 20, Color: red |
| 3038930 | FBS 50-5 | Plug-in bridge, Number of positions: 50, Color: red |
| Marking | | |
| 0800967 | STP 5-2 | Double marker carrier, snaps onto the double-level spring-cage terminal block STTB 2.5 and STTB 4, labeled with ZB 5 or ZBF 5 |
| 3030941 | WST 2,5 | Warning cover, 5-pos., for terminal width: 5.2 mm |
| 0807180 | ZBFM 5/OG:UNBEDRUCKT | Zack marker sheet, flat, unprinted: 120-section, 10 strips à 12 markers, sufficient for 120 terminal blocks, for all terminal blocks, pitch 5.2 mm, labeling with M-PEN or CMS system, color: orange |
| 0803595 | ZBFM 5/WH:UNBEDRUCKT | Zack marker sheet, flat, unprinted: 120-section, 10 strips à 12 markers, sufficient for 120 terminal blocks, for all terminal blocks, pitch 5.2 mm, labeling with M-PEN or CMS system, color: white |
| 0803647 | ZBFM 5:SO/CMS | Special printing, Zack marker sheet, flat, 120-section, divisible, marking according to customer requirements |

Plug/Adapter

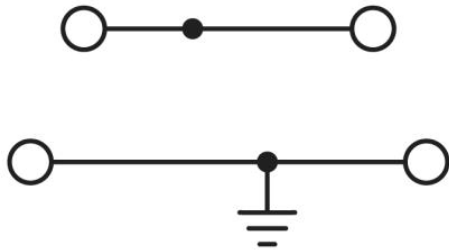
| | | |
|---------|-------------|--------------------------------------|
| 3002843 | ISH 2,5/0,2 | Insulation stop sleeve, Color: white |
| 3002856 | ISH 2,5/0,5 | Insulation stop sleeve, Color: gray |
| 3002869 | ISH 2,5/1,0 | Insulation stop sleeve, Color: black |
| 3030925 | PAI-4 | Test adapter, Color: gray |
| 3030983 | PS-5 | Test adapter, Color: red |

Tools

| | | |
|---------|---------------|---|
| 1204517 | SZF 1-0,6X3,5 | Actuation tool, for ST terminal blocks, also suitable for use as a bladed screwdriver, size: 0.6 x 3.5 x 100 mm, 2-component grip, with non-slip grip |
|---------|---------------|---|

Diagrams/Drawings

Circuit diagram



Address

PHOENIX CONTACT Deutschland GmbH
Flachmarktstr. 8
32825 Blomberg, Germany
Phone +49 5235 3 12000
Fax +49 5235 3 41200
<http://www.phoenixcontact.de>



© 2011 Phoenix Contact
Technical modifications reserved;