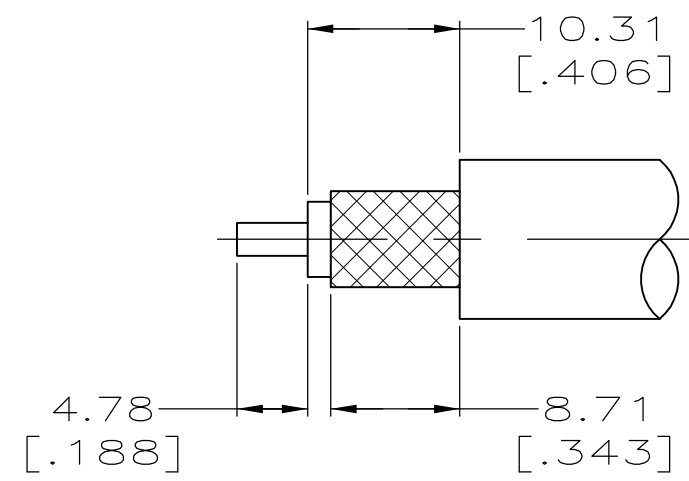


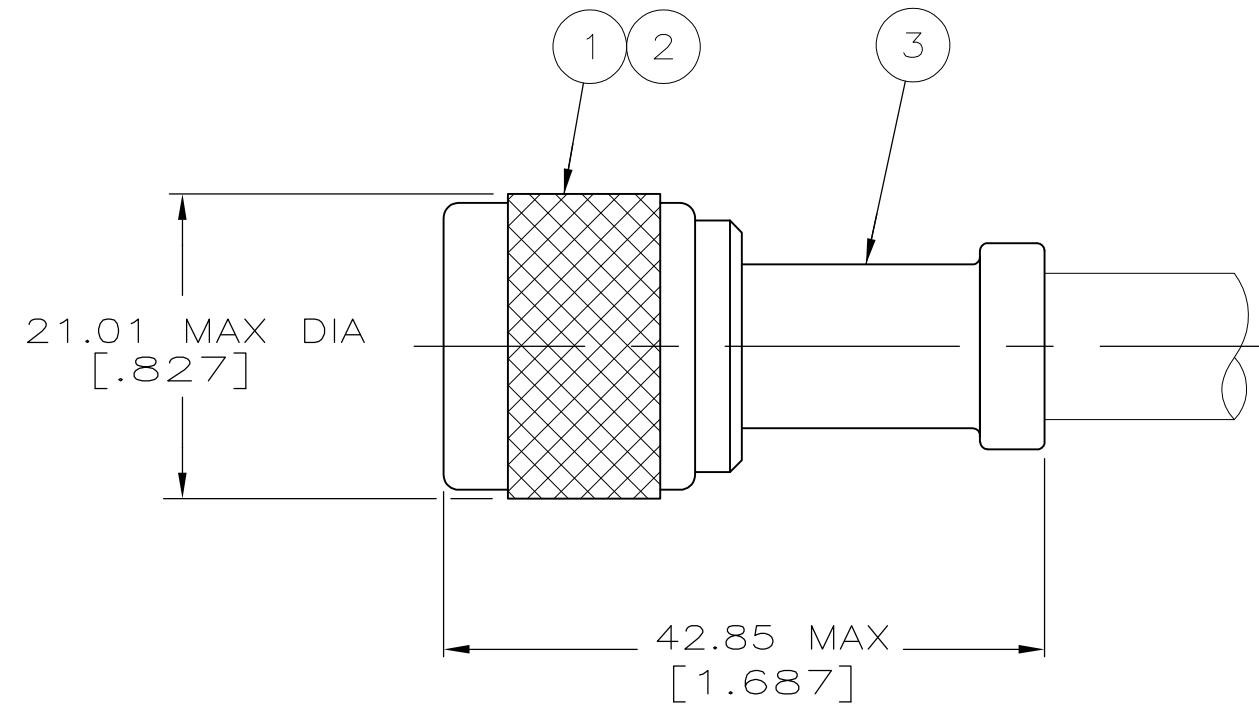
THIS DRAWING IS UNPUBLISHED. RELEASED FOR PUBLICATION  
 © COPYRIGHT BY TYCO ELECTRONICS CORPORATION. ALL RIGHTS RESERVED.

LOC	DIST	REVISIONS					
		P	LTR	DESCRIPTION	DATE	DWN	APVD
AJ	16		E1	REVISED PER ECO-06-018713	30AUG2006	MC	JH
			E2	REVISED PER ECO-09-020689	31AUG09	KK	AEG
			E3	REVISED PER ECO-12-008922	06SEP12	MGM	WM

- 1. CRIMP TOOL: 220045-2
- △ 2. SEE SEPERATE RESTRICTED CUSTOMER DRAWING WITH THIS PART NUMBER
- 3. SEE I.S. 2028-1
- △ 4. OBSOLETE PARTS: OBSOLETE CIS STREAMLINING PER D.RENAUD/D.SINISI



RECOMMENDED STRIP LENGTH



OBSOLETE	-	-	-	-	-	1-225392-0
△ 4 OBSOLETE	RG-58A/U & 58C/U (BSX 7002-58C/U)	225392-7 AMP	225560-2	225343-2	225412-2	225392-7
OBSOLETE	-	-	-	-	-	225392-5
SUPERSEDED BY 225392-2						
OBSOLETE	-	-	-	-	-	225392-4
OBSOLETE	RG-142/U, 142A/U & 142B/U	225392-2 AMP	9-225560-4	225343-4	225412-1	225392-2
OBSOLETE	RG-55/U & 223/U	225392-1 AMP	225560-1	225343-2	225412-1	225392-1
	CABLE SIZE	STAMPING	③ FERRULE QTY=1	② CONTACT QTY=1	① PLUG ASSY QTY=1	PART NUMBER

THIS DRAWING IS A CONTROLLED DOCUMENT.

DWN	B. SCOTT	07-11-91
CHK	B. MOYER	12-13-91
APVD	-	-
PRODUCT SPEC	108-12019	
APPLICATION SPEC	-	
WEIGHT	1.2 OZ MAX	
CUSTOMER DRAWING	-	

**Tyco Electronics** Tyco Electronics Corporation  
Harrisburg, PA 17105-3608

NAME: PLUG, WEATHERPROOF, SERIES N

SIZE	CAGE CODE	DRAWING NO	RESTRICTED TO
A2	00779	C=225392	-
SCALE	SHEET	REV	
2:1	1 of 1	E3	