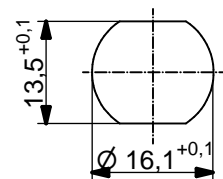
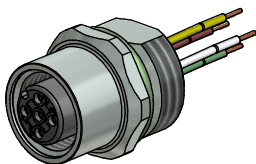


Contact assignment:

- 1) brown
- 2) white
- 3) green
- 4) yellow



Minimum wall thickness 1,5mm,
alternativ panel cut-out d=16,1

Technical specification:

Rated voltage: 250 V
IEC 61076-2-101

Current rating: 4 A at 40°C
IEC 61076-2-101

Insulation resistance: $\geq 100 \text{ M}\Omega$
IEC 60512

Pollution degree: 3/2
IEC 60664-1

Degree of protection: IP 67, in mated condition
IEC 60529

Temperature range: -30°C ... +80°C

Mating cycles: ≥ 100
IEC 60512-9a

Materials:

Contact: CuZn

Contact plating: Nickel, gold plated

Contact carrier: PBT GF, UL 94

Sealing: FPM

Socket housing: CuZn, nickel plated

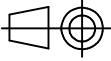

Grouting: Polyurethane-resin, UL 94

Installation specification:

Recommended torque: 1-1,2 Nm

Conec installation tool: Torque wrench: 36-000200
Insert across flats 17: 36-000230

Part no:	Description:	Pos	Length L:	Wire:
43-01703	SAL - CN - 12 - FK4.41 - 0,5	4	0,5m	AWG 24 PVC, UL
43-xxxxx	SAL - CN - 12 - FK4.41 - ...	4	x	

DO NOT ALTER CAD DRAWING BY HAND Directive 2002/95/EC RoHS compliant	Index: a 19.02.13 MG Ä4631 Data sheet revised, technical specification changed	 dim. in mm		title: Female socket M12x1 with wire, frontmounting, CAN-Bus	
		date	name		
	tolerance of wire: L \leq 0,5m: L + 20mm L > 0,5m: L + 4%	drawn	28.10.10	Franz	dwg no: 43K1A1225
	general tolerance: 0 \pm 0,50mm 0,0 \pm 0,25mm 0,00 \pm 0,10mm	appd.	28.10.10	Mankopf	
THIS DRAWING MAY NOT BE COPIED OR REPRODUCED IN ANY WAY, AND MAY NOT BE PASSED ON TO A THIRD PARTY WITHOUT WRITTEN PERMISSION. OWNERSHIP AND COPYRIGHT OF CONEC GmbH				part no: see table	