

0.551 [14.00] MAX
CABLE DIAMETER

GROUNDING
SCREW
(PHILLIPS)



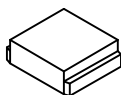
HOUSING
SCREW
(PHILLIPS)



MOUNTING
SCREW
(PHILLIPS)



SLOT
COVER

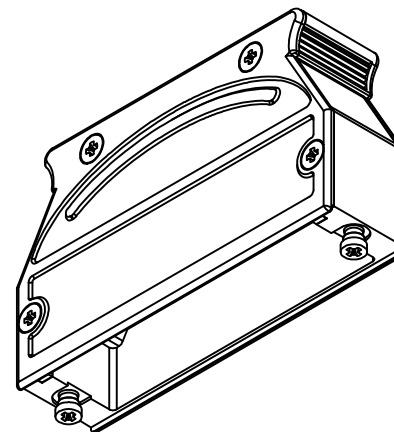


CABLE DIAMETER

0.551 [14.00] MAX

MATERIAL:

BACKSHELL: ZINC ALLOY
 COVER: ZINC ALLOY
 MOUNTING SCREWS: STEEL, NICKEL PLATED
 HOUSING SCREWS: STEEL, ZINC PLATED
 GROUNDING SCREW: STEEL, ZINC PLATED
 CABLE SLOT COVER: ZINC ALLOY
 OPERATING TEMP: -55°C TO +90°C



BACKSHELL KIT INCLUDES:

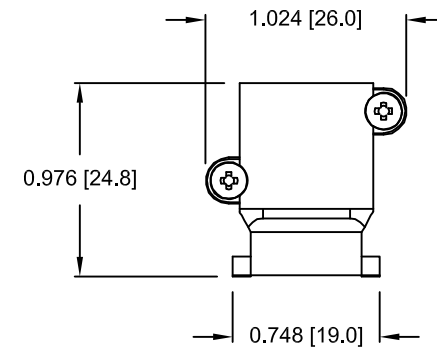
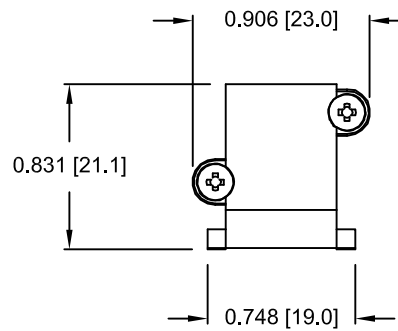
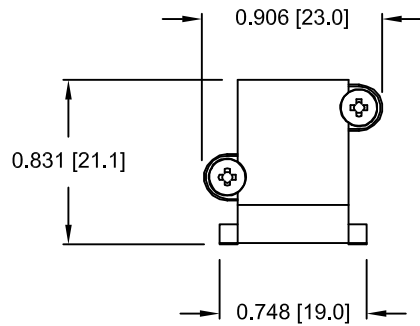
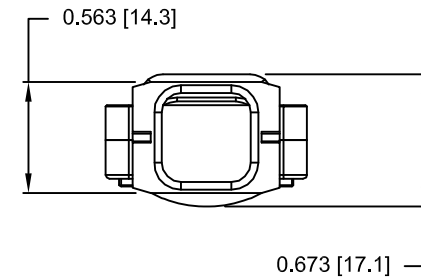
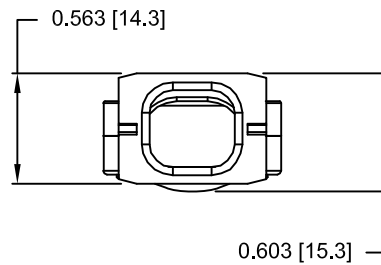
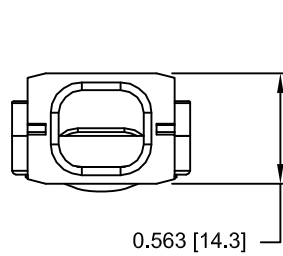
- (1) BACKSHELL
- (1) BACKSHELL COVER
- (2) MOUNTING SCREWS
- (4) HOUSING SCREWS
- (1) GROUNDING SCREW
- (2) CABLE SLOT COVER

DO NOT SCALE FROM DRAWING

	THESE DRAWINGS AND SPECIFICATIONS ARE THE PROPERTY OF NorComp AND SHALL NOT BE REPRODUCED, COPIED OR USED AS THE BASIS FOR THE MANUFACTURE OF SALE OF APPARATUS WITHOUT WRITTEN PERMISSION.		DRAWN: M. SIGMON	DATE: 01-14-14
			CHECKED:	DATE:
<h1>NorComp</h1>		SCALE: N.T.S.	SHEET 1	OF 2
		DWG NO. 975M050-030R121		

RoHS COMPLIANT

CABLE CLAMPS ORDERED SEPARATELY



P/N 955-50-SR-8-10
CABLE RANGE = 0.315 - 0.394

P/N 955-50-SR-11-14
CABLE RANGE = 0.433 - 0.551

P/N 955-50-SR-14-16
CABLE RANGE = 0.551 - 0.630

DO NOT SCALE FROM DRAWING



THESE DRAWINGS AND SPECIFICATIONS ARE THE PROPERTY OF NorComp AND SHALL NOT BE REPRODUCED, COPIED OR USED AS THE BASIS FOR THE MANUFACTURE OF SALE OF APPARATUS WITHOUT WRITTEN PERMISSION.

DRAWN:
M. SIGMON

DATE:
03-18-14

CHECKED:

DATE:

NorComp

SCALE:
1 : 1

SHEET 2 OF 2

REV 1

DWG NO. 975M050-030R121

RoHS COMPLIANT