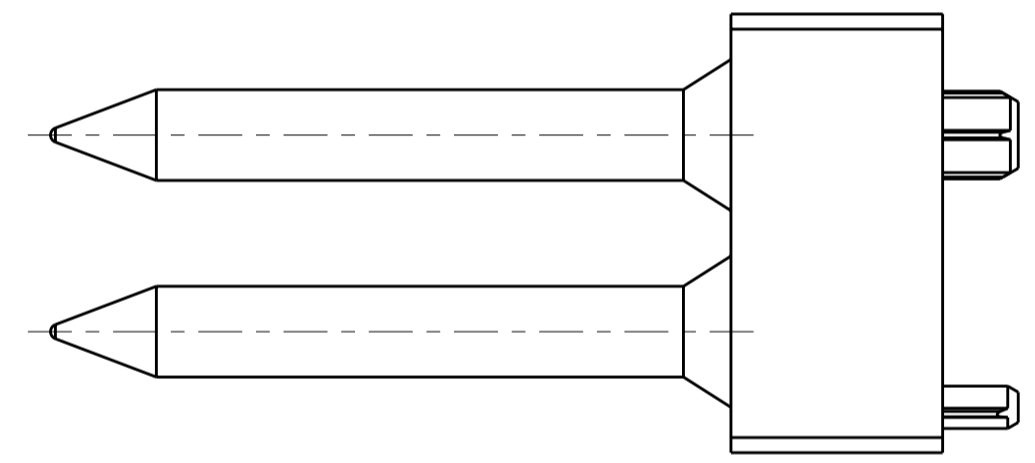
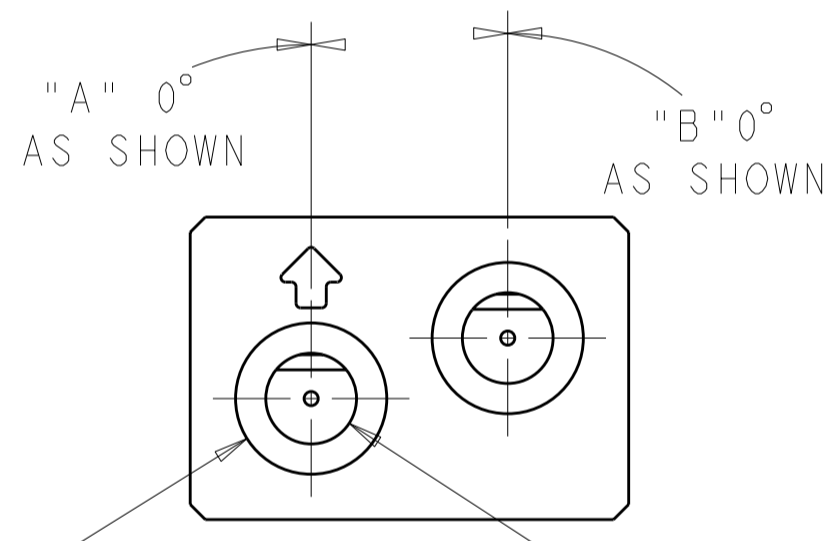
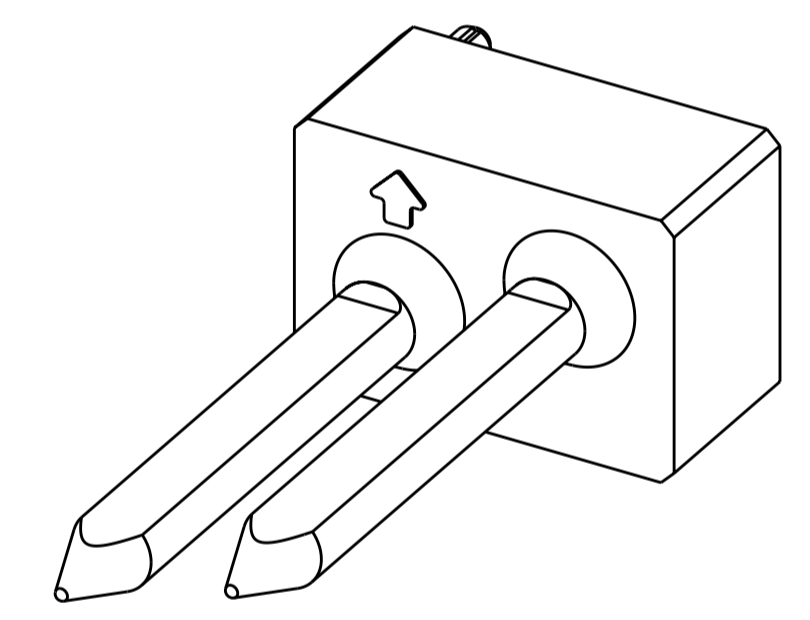
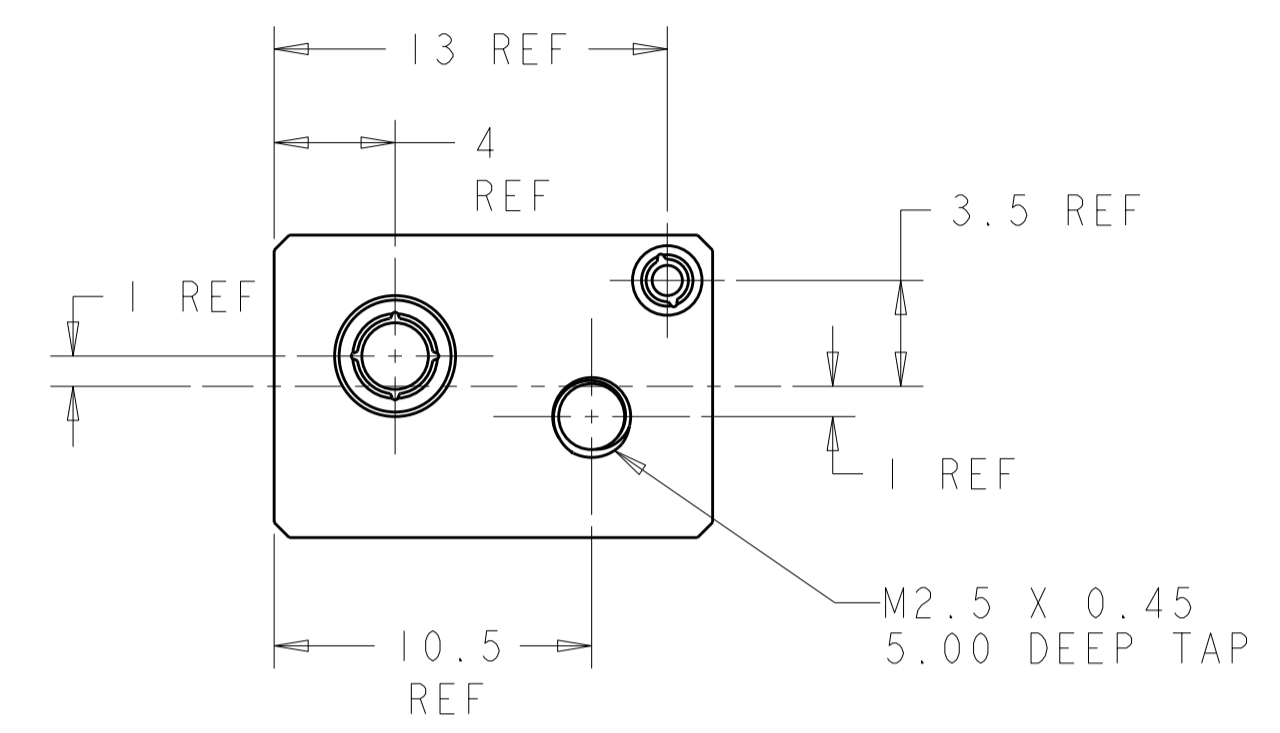
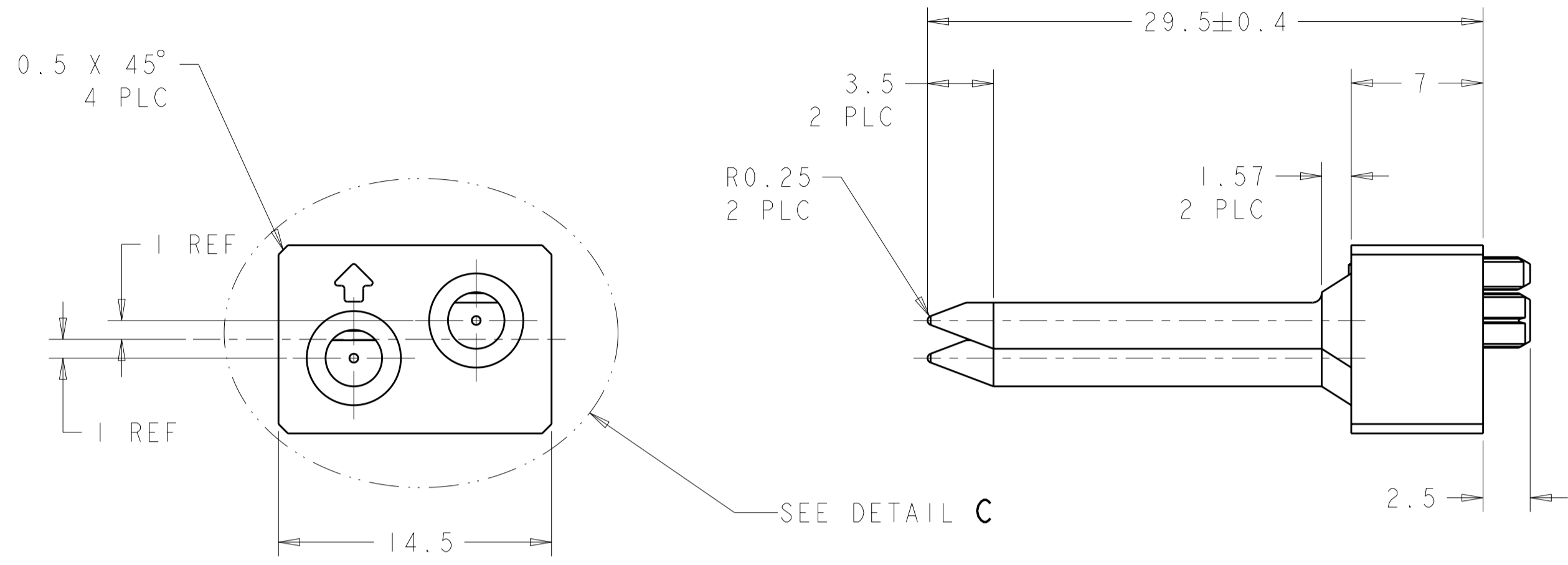
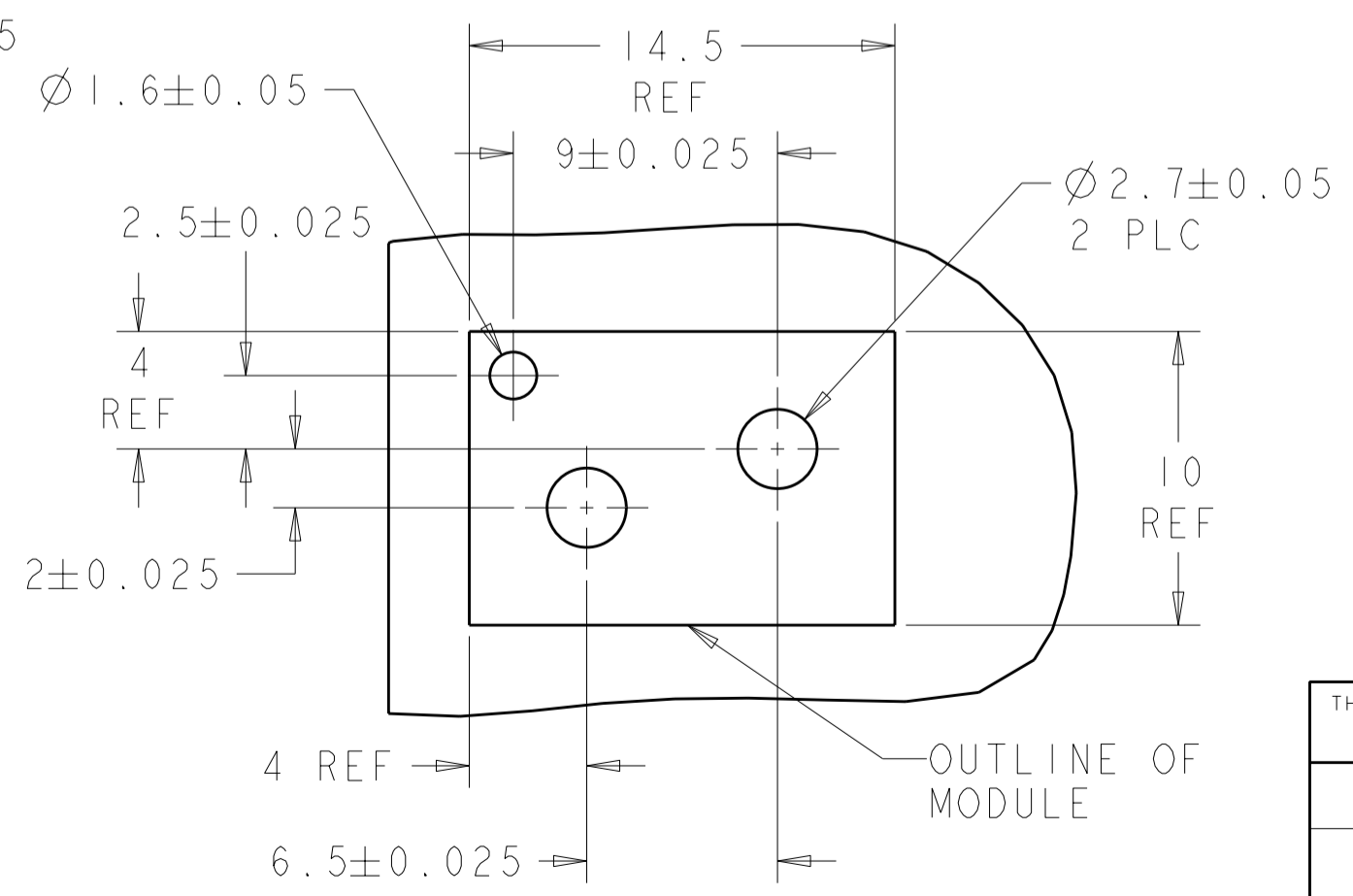


THIS DRAWING IS UNPUBLISHED. RELEASED FOR PUBLICATION 20  
 © COPYRIGHT 20 ALL RIGHTS RESERVED.

| LOC | DIST | REVISIONS                 |           |     |      |  |
|-----|------|---------------------------|-----------|-----|------|--|
| P   | LTR  | DESCRIPTION               | DATE      | DWN | APVD |  |
| AD  | 00   |                           |           |     |      |  |
|     | AI   | REVISED PER ECO-11-005027 | 16MAY2011 | RK  | HMR  |  |



DETAIL C  
 SCALE 4:1  
 1-1469387-1 SHOWN



NOTES:  
 1. RECOMMENDED MOUNTING HARDWARE - M2.5 X 0.45 SCREW, 4.0MM LONG UP TO 2.9 MM THICK PCB, 6.0MM LONG FOR 3.0 TO 4.0 MM THICK PCB, 8.0MM FOR 4.1 TO 6.0MM THICK PCB, 10.0MM FOR 6.1 TO 8.0MM THICK PCB. (HARDWARE NOT SUPPLIED WITH PART NUMBER)

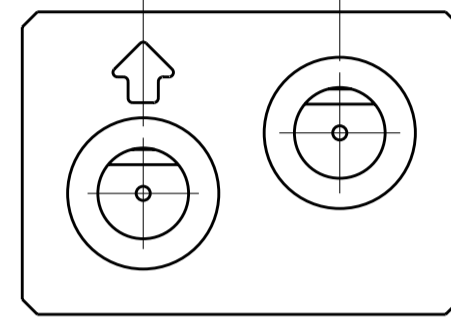
|      |      |             |
|------|------|-------------|
| 315° | 225° | 6-1469387-8 |
| 270° | 90°  | 3-1469387-7 |
| 0°   | 0°   | 1-1469387-1 |
| "B"  | "A"  | PART NUMBER |

|  |  |                              |   |  |
|--|--|------------------------------|---|--|
| THIS DRAWING IS A CONTROLLED DOCUMENT. |  | DWN<br>D. SZCZESNY 17DEC02   | <b>STE</b> TE Connectivity                  |  |
| DIMENSIONS: mm                         |  | CHK<br>R. PATTERSON 14SEP04  |   |  |
| TOLERANCES UNLESS OTHERWISE SPECIFIED: |  | APVD<br>R. PATTERSON 14SEP04 | NAME<br>ATCA GUIDE MODULE (BACK PLANE - AI) |  |
| 0 PLC ±0.2                             |  | PRODUCT SPEC                 | SIZE CAGE CODE DRAWING NO RESTRICTED TO     |  |
| 1 PLC ±0.2                             |  | APPLICATION SPEC             | A200779C-1469387                            |  |
| 2 PLC ±0.13                            |  | WEIGHT                       | SCALE 2:1 SHEET 1 OF 2 REV AI               |  |
| 3 PLC ±0.050                           |  | MATERIAL<br>ZAMAC 3 NICKEL   | CUSTOMER DRAWING                            |  |
| 4 PLC ±0.0200                          |  | FINISH                       |   |  |
| ANGLES ±0.5                            |  |                              |   |  |

THIS DRAWING IS UNPUBLISHED.      RELEASED FOR PUBLICATION      20  
 © COPYRIGHT 20      ALL RIGHTS RESERVED.

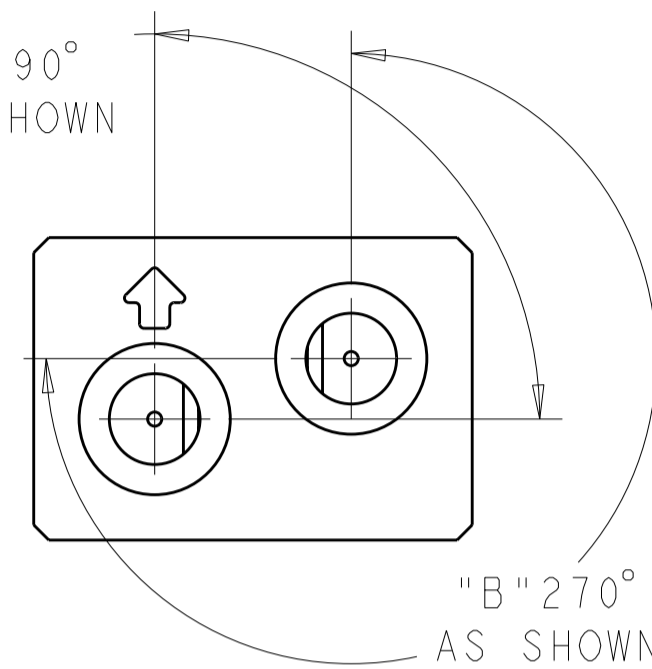
| LOC | DIST | REVISIONS   |             |     |      |
|-----|------|-------------|-------------|-----|------|
| P   | LTR  | DESCRIPTION | DATE        | DWN | APVD |
| AD  | 00   | -           | SEE SHEET 1 | -   | -    |
|     |      |             |             |     |      |
|     |      |             |             |     |      |

"A" 0° AS SHOWN      "B" 0° AS SHOWN



1-1469387-1

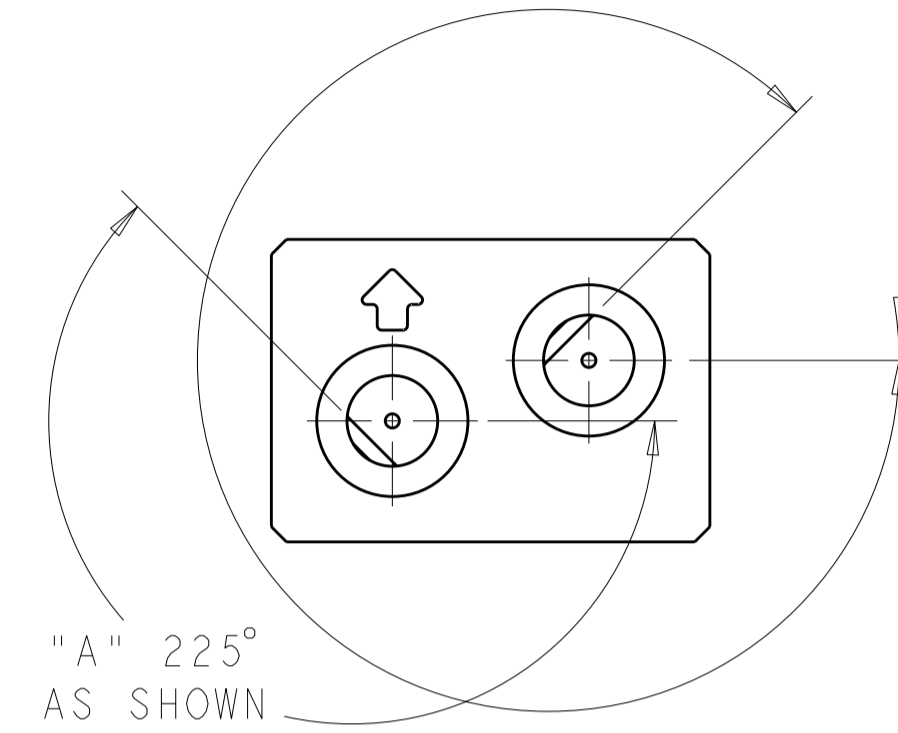
"A" 90° AS SHOWN



3-1469387-7

"B" 270° AS SHOWN

"A" 225° AS SHOWN



6-1469387-8

"B" 315° AS SHOWN

|   |        |                              |   |                          |
|---|--------|------------------------------|---|--------------------------|
| THIS DRAWING IS A CONTROLLED DOCUMENT.  |        | DWN<br>D. SZCZESNY 17DEC02   | TE Connectivity                             |                          |
| DIMENSIONS:<br>mm   |        | CHK<br>R. PATTERSON 14SEP04  |   |                          |
| TOLERANCES UNLESS OTHERWISE SPECIFIED:  |        | APVD<br>R. PATTERSON 14SEP04 | NAME<br>ATCA GUIDE MODULE (BACK PLANE - A1) |                          |
| 0 PLC ±0.2<br>1 PLC ±0.2<br>2 PLC ±0.13<br>3 PLC ±0.050<br>4 PLC ±0.0200<br>ANGLES ±0.5<br>FINISH |        | PRODUCT SPEC<br>-            | RESTRICTED TO<br>-                          |                          |
| MATERIAL<br>ZAMAC 3   | NICKEL | APPLICATION SPEC<br>-        | SIZE<br>A200779                             | DRAWING NO.<br>C-1469387 |
| CUSTOMER DRAWING  |        | WEIGHT<br>-                  | SCALE<br>2:1                                | SHEET 2 OF 2 REV A1      |