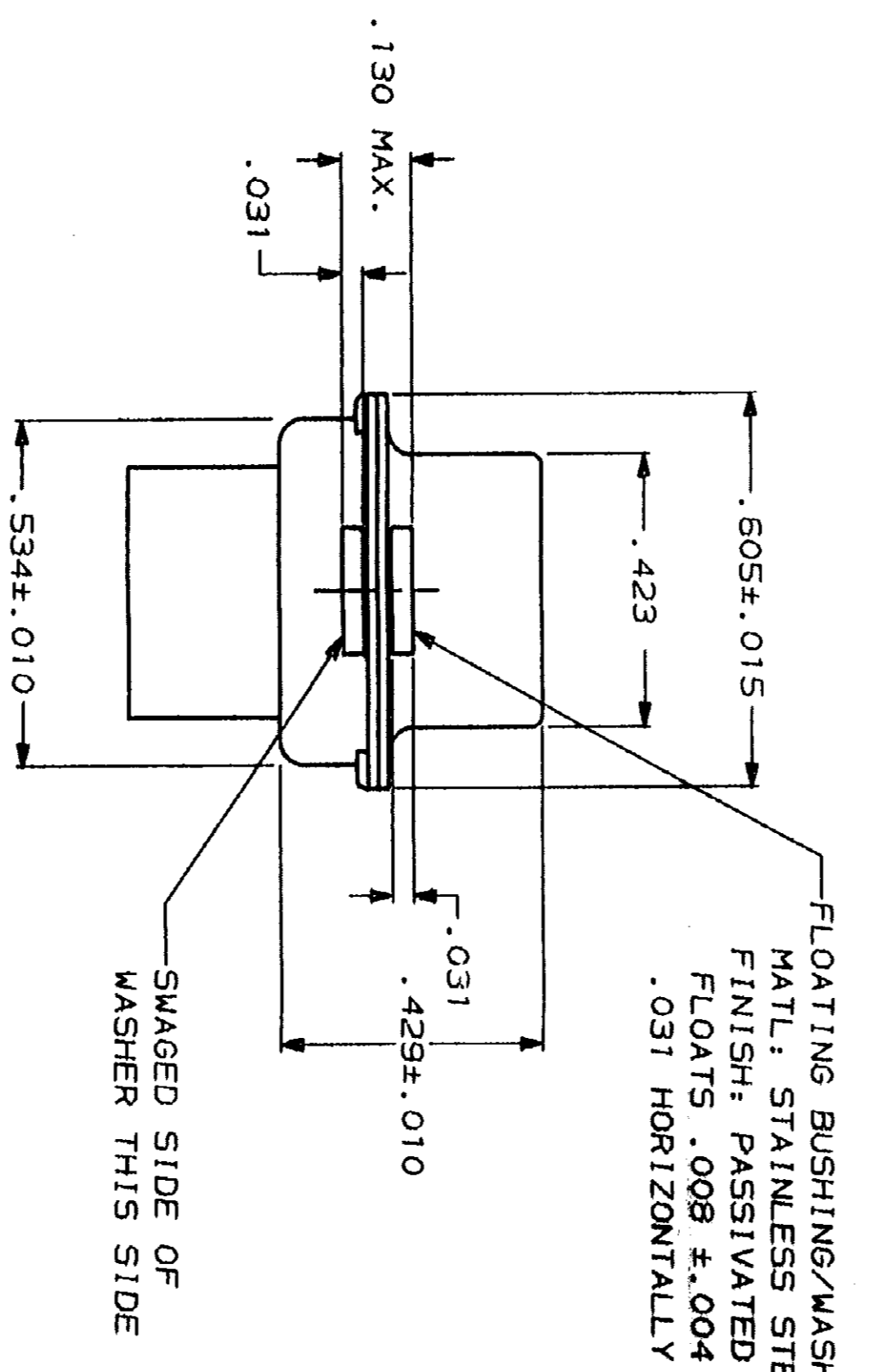
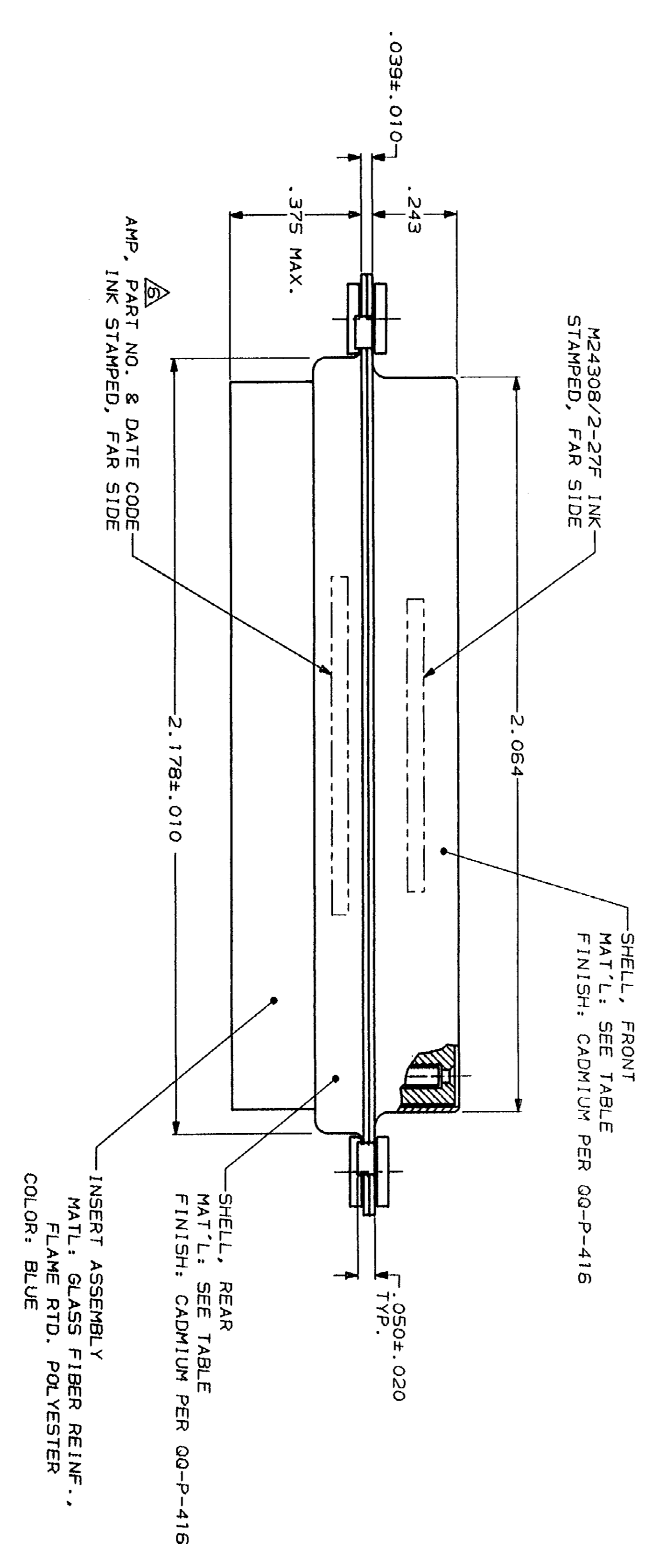
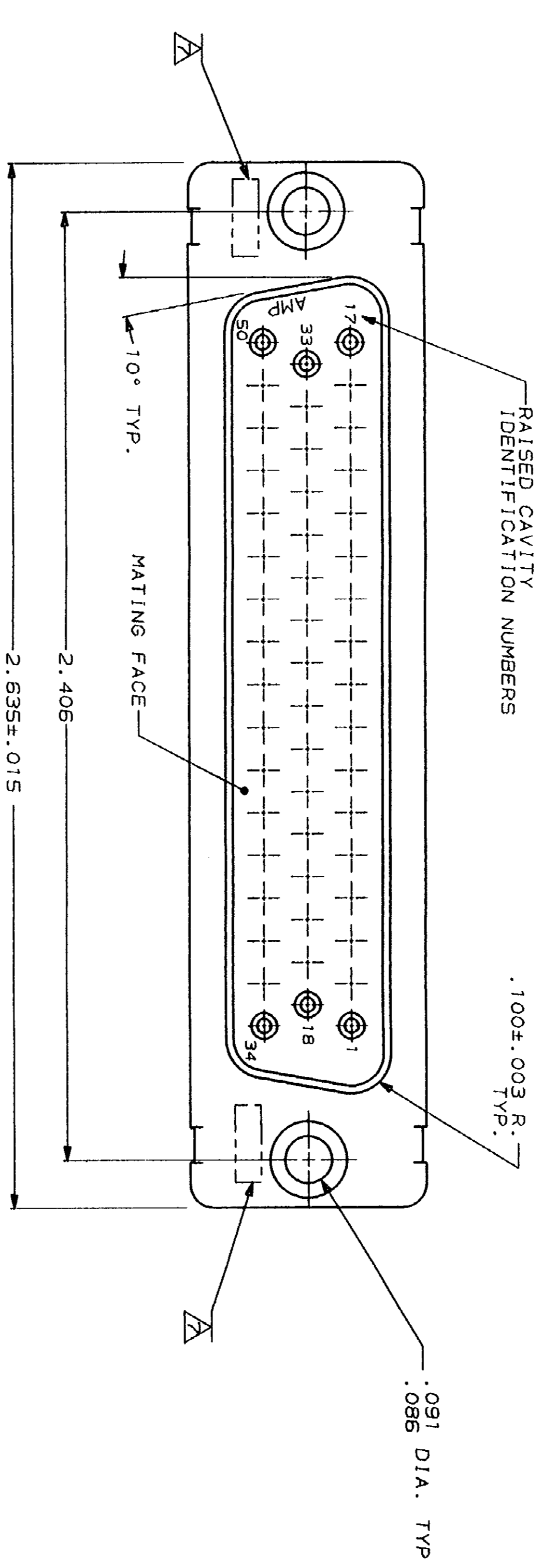


REV. NO.	DATE	APP'D	DESCRIPTION
1	12-9	FB	
2	87		
3			
4			
5			
6			
7			
8			
9			
10			
11			
12			
13			
14			
15			
16			
17			
18			
19			
20			
21			
22			
23			
24			
25			
26			
27			
28			
29			
30			
31			
32			
33			
34			
35			
36			
37			
38			
39			
40			
41			
42			
43			
44			
45			
46			
47			
48			
49			
50			
51			
52			
53			
54			
55			
56			
57			
58			
59			
60			
61			
62			
63			
64			
65			
66			
67			
68			
69			
70			
71			
72			
73			
74			
75			
76			
77			
78			
79			
80			
81			
82			
83			
84			
85			
86			
87			
88			
89			
90			
91			
92			
93			
94			
95			
96			
97			
98			
99			
100			



1. THIS RCPT. IS DESIGNED TO CONFORM TO THE LATEST ISSUE OF MIL-C-24308
2. MAX WIRE INSUL TO BE USED WITH THIS RCPT IS .068 DIA
3. STAINLESS STEEL RETENTION CLIPS ARE INCLUDED IN INSERTS
4. PACKAGE STAMPED M24308/2-296F
5. THIS RCPT. WILL ACCEPT SIZE 20 SOCKET CONTACT M24308/10 OR AMP # 205090

AMP PART NO. STAMPED ON CONNECTOR REPRESENTS KIT NUMBER WITH CONTACTS  
 UL/CSA DESIGNATION STAMPED IN THIS AREA, OPTIONAL

DO NOT SCALE PRINT. UNLESS SPECIFIED DIMENSIONS IN INCHES TOLERANCES IN INCHES	DR 12-08-87 C.C. THOMAS	NAME AMPLIMITE RCPT. FOR SOCKET CONTACTS HI-DENSITY "HDM-20" CONNECTOR SIZE 5 (50 POSN) SERIES 109 WITH FLOAT BUSHINGS
5 PLG DEC ± .005	CHK 12-10-87 F.C. BALLEW III	AMP INCORPORATED MILWAUKEE, WI 53186
ANGLES ± 0°30'	APPD 12-10-87 F.C. BALLEW III	SIZE F50H NO 00779
MATERIAL	APPD 12-10-87 D.J.M.	DRAWING NO 205420
SEE CALLOUTS	PRODUCT SPEC	SCALE 4:1
SEE CALLOUTS	APPLICATION SPEC	SHEET 1 OF 1
FINISH	HEIGHT	

BRASS	205420-2
STEEL PER ASTM-A-109	205420-1
SHELL MAT'L	PART NO

**OBSOLETE**

CUSTOMER DRAWING