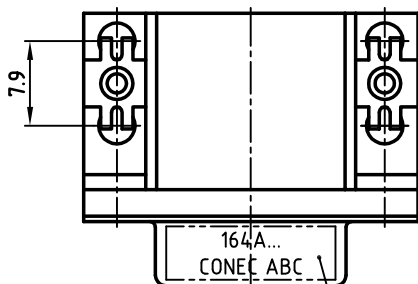
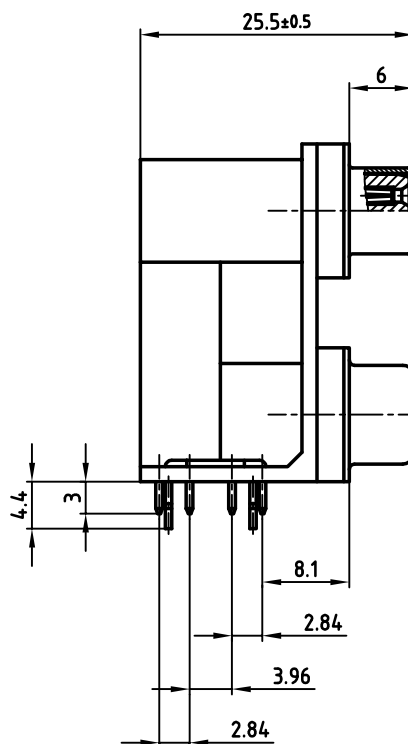
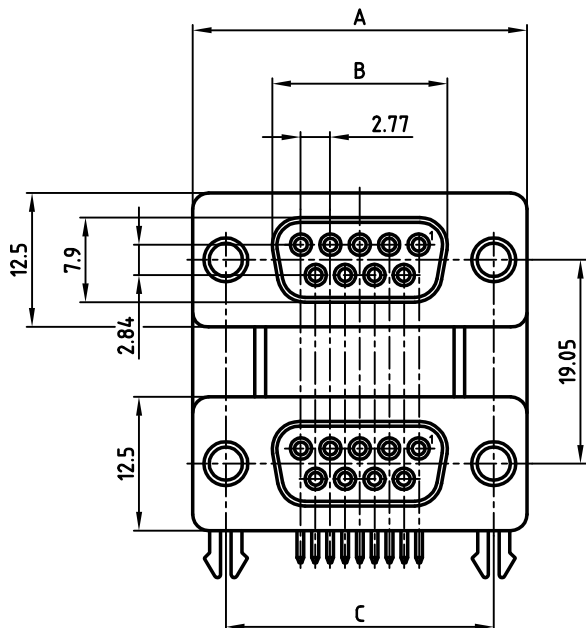


used for: D-SUB DUAL-PORT

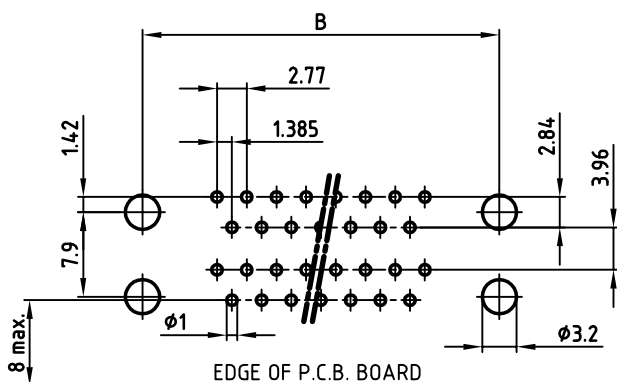


SEE NOTE 4

No. of pos.	A	B	C	Part-NO.
2x 9	30.80	16.30	25.00	164A07039A
2x15	39.20	24.60	33.30	
2x25	53.10	38.30	47.10	
2x37	69.40	54.80	63.50	

Directive 2002/95/EC
"RoHS"
Compliant

P.C.B. HOLE DRILLINGS



NOTES:

- MATERIAL:
SHELL: STEEL
INSULATOR: PBT, RATED UL 94 V-0
CONTACTS: COPPER ALLOY
RIVET, BOARDLOCK: COPPER ALLOY
- CONTACT PLATING:
G = GOLD FLASH OVER 40µm NICKEL ON ALL AREA
CONTACT AREA: GOLD FLASH (SEE PART NO.)
SOLDER TAILS: GOLD FLASH OVER 40µm NICKEL
- ELECTRICAL:
OPERATION VOLTAGE: 250 V AC max.
CURRENT RATING: 3 A max.
CONTACT RESISTANCE: 25 M Ohm max.
INSULATION RESISTANCE: 3000 M Ohm min. @ 500 V DC
DIELECTRIC WITHSTANDING VOLTAGE: 1000 V AC / MINUTE
OPERATING TEMPERATURE: -55°C TO +105°C
- CONNECTOR IS PART MARKED: PART-NO. CONE C ABC

APPROVAL # FREIGABE # DEBLOCAGE # AUTORIZACION # APPROVAL

CUSTOMER APPROVAL DATE:

NAME: TITLE:

COMPANY NAME:

APPROVAL # FREIGABE # DEBLOCAGE # AUTORIZACION # APPROVAL

THIS DRAWING MAY NOT BE COPIED OR REPRODUCED IN ANY WAY, AND MAY NOT BE PASSED ON TO A THIRD PARTY WITHOUT WRITTEN PERMISSION.

OWNERSHIP AND COPYRIGHT OF CONE C GmbH

DO NOT ALTER CAD DRAWING BY HAND

rev.	description	date	name
1 x b	Ä 3364	28.05.2009	Petker
a	Origin		

tolerance	scale:
	2:1
	material: SEE NOTES
2002	date
drawn	26.08.
name	Parei
appd.	27.08.
name	Resonnek
norm	
d-old	

title: D-SUB DUAL-PORT
Female / Female 2x9pos. - 2x37pos.

dwg no: AutoCAD 2000 DIN-A
16K1A738 3
sh: 1/1

part no: SEE TABLE